

FOR INDEX OF SHEETS, SEE SHEET NO. 3

TRAFFIC DATA

	2009 ADT	2030 ADT
MANNHEIM ROAD	30,000	58,200
ZEMKE BLVD.	5,500	6,140
HIGGINS ROAD	25,500	43,000

	DESIGN SPEED	POSTED SPEED
MANNHEIM ROAD	50/45 MPH	50/40 MPH
ZEMKE BLVD.	30 MPH	30 MPH
HIGGINS ROAD	45 MPH	40 MPH

DESIGN DESIGNATION

MANNHEIM ROAD	5240(30) PRINCIPAL ARTERIAL 33.35(PCC-30)
ZEMKE BLVD.	580(30) COLLECTOR 33.35(PCC-30)
HIGGINS ROAD	3870(30) MINOR ARTERIAL 33.35(PCC-30)

**STATE OF ILLINOIS
DEPARTMENT OF TRANSPORTATION
DIVISION OF HIGHWAYS**

**PROPOSED
HIGHWAY PLANS**

**F.A.P. 330 (US 12/45)
MANNHEIM ROAD NORTH (I-190 TO IL 72)
RECONSTRUCTION**

**SECTION: 0105-WRS
PROJECT: ACNHF-0330(069)**

**COOK COUNTY
C-91-518-11**

F.A.P. RTE.	SECTION	COUNTY	TOTAL SHEETS	SHEET NO.
330	0105-WRS	COOK	* 537	1

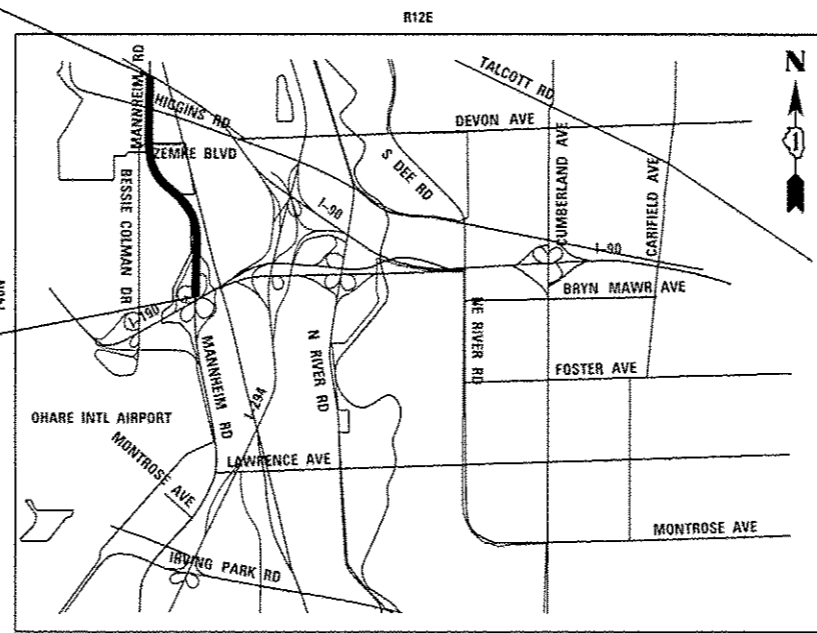
ILLINOIS CONTRACT NO. 60P35
* 537 + 1 = 538
D-91-518-11 * 538 + 3 = 541



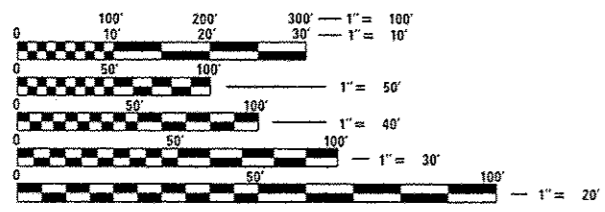
LOCATION OF SECTION INDICATED THUS: - [black rectangle]

**PROJECT ENDS
STA. 196 + 16.59**

**PROJECT BEGINS
STA. 119 + 38.52**



LOCATION MAP
N.T.S.



FULL SIZE PLANS HAVE BEEN PREPARED USING STANDARD ENGINEERING SCALES. REDUCED SIZED PLANS WILL NOT CONFORM TO STANDARD SCALES. IN MAKING MEASUREMENTS ON REDUCED PLANS, THE ABOVE SCALES MAY BE USED.

FOR UTILITY INFORMATION CALL J.U.I.E. (JOINT UTILITY LOCATION INFORMATION FOR EXCAVATION) AT (800) 892-0123 48 HOURS BEFORE DIGGING

GROSS LENGTH = 7,676.48 FT. = 1.454 MILE
NET LENGTH = 7,676.48 FT. = 1.454 MILE

STATE OF ILLINOIS
DEPARTMENT OF TRANSPORTATION
DIVISION OF HIGHWAYS

SUBMITTED Dec 25 20 12
John F. [Signature]
DEPUTY DIRECTOR OF HIGHWAYS, REGION ENGINEER

Dec 7 20 12
John D. Baranzelli P.E.
actg ENGINEER OF DESIGN AND ENVIRONMENT

Dec 7 20 12
William B. Frey Jr.
actg DIRECTOR OF HIGHWAYS, CHIEF ENGINEER

HNTB TENG

PRINTED BY THE AUTHORITY
OF THE STATE OF ILLINOIS

Rev. 1-3-13

DISTRICT ONE DESIGN CONSULTANT SERVICES MANAGER: SERIN KELLER (847) 705-4556

CONTRACT NO. 60P35