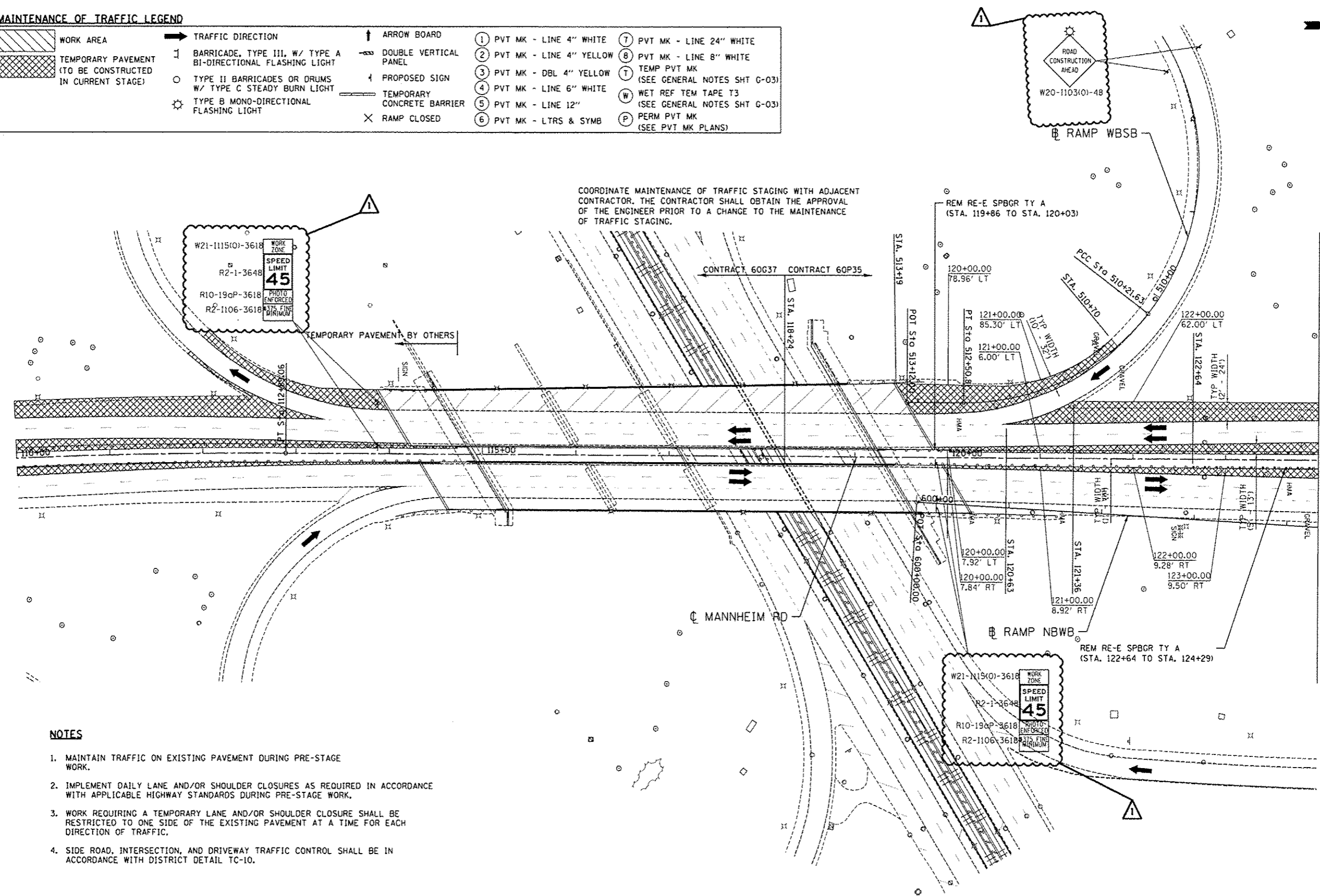


MAINTENANCE OF TRAFFIC LEGEND

	WORK AREA		TRAFFIC DIRECTION		ARROW BOARD		1 PVT MK - LINE 4" WHITE		7 PVT MK - LINE 24" WHITE
	TEMPORARY PAVEMENT (TO BE CONSTRUCTED IN CURRENT STAGE)		BARRICADE, TYPE III, W/ TYPE A BI-DIRECTIONAL FLASHING LIGHT		DOUBLE VERTICAL PANEL		2 PVT MK - LINE 4" YELLOW		8 PVT MK - LINE 8" WHITE
	TYPE II BARRICADES OR DRUMS W/ TYPE C STEADY BURN LIGHT		PROPOSED SIGN		TEMPORARY CONCRETE BARRIER		3 PVT MK - DBL 4" YELLOW		T TEMP PVT MK (SEE GENERAL NOTES SHT G-03)
	TYPE B MONO-DIRECTIONAL FLASHING LIGHT		RAMP CLOSED		4 PVT MK - LINE 6" WHITE		5 PVT MK - LINE 12" WHITE		W WET REF TEM TAPE T3 (SEE GENERAL NOTES SHT G-03)
			6 PVT MK - LTRS & SYMB		P PERM PVT MK (SEE PVT MK PLANS)				

COORDINATE MAINTENANCE OF TRAFFIC STAGING WITH ADJACENT CONTRACTOR. THE CONTRACTOR SHALL OBTAIN THE APPROVAL OF THE ENGINEER PRIOR TO A CHANGE TO THE MAINTENANCE OF TRAFFIC STAGING.



NOTES

1. MAINTAIN TRAFFIC ON EXISTING PAVEMENT DURING PRE-STAGE WORK.
2. IMPLEMENT DAILY LANE AND/OR SHOULDER CLOSURES AS REQUIRED IN ACCORDANCE WITH APPLICABLE HIGHWAY STANDARDS DURING PRE-STAGE WORK.
3. WORK REQUIRING A TEMPORARY LANE AND/OR SHOULDER CLOSURE SHALL BE RESTRICTED TO ONE SIDE OF THE EXISTING PAVEMENT AT A TIME FOR EACH DIRECTION OF TRAFFIC.
4. SIDE ROAD, INTERSECTION, AND DRIVEWAY TRAFFIC CONTROL SHALL BE IN ACCORDANCE WITH DISTRICT DETAIL TC-10.

FILE NAME: ... USER NAME: ... DESIGNED: BRH ... REVISION: 12/27/2012 MM ... DRAWN: JZP ... CHECKED: KDA ... DATE: 10/19/12 ... PLOT DATE: 12-26-2012 ...

TENG TENG & ASSOCIATES, INC. ENGINEERS/ARCHITECTS/PLANNERS CHICAGO, ILLINOIS	USER NAME: #USER*	DESIGNED: BRH	REVISION: 12/27/2012 MM	STATE OF ILLINOIS DEPARTMENT OF TRANSPORTATION	MAINTENANCE OF TRAFFIC PRE-STAGE		F.A. RTE.	SECTION	COUNTY	TOTAL SHEETS	SHEET NO.
	PLOT SCALE: #SCALE*	CHECKED: KDA	DATE: 10/19/12		SCALE: 1"=50'	SHEET NO. OF SHEETS	STA. 110+00 TO STA. 124+00	0105-WRS	COOK	517	91
							CONTRACT NO. 60P35		ILLINOIS FED. AID PROJECT		

MATCHLINE STA 124+00
SEE SHEET MOT-11

MOT-10