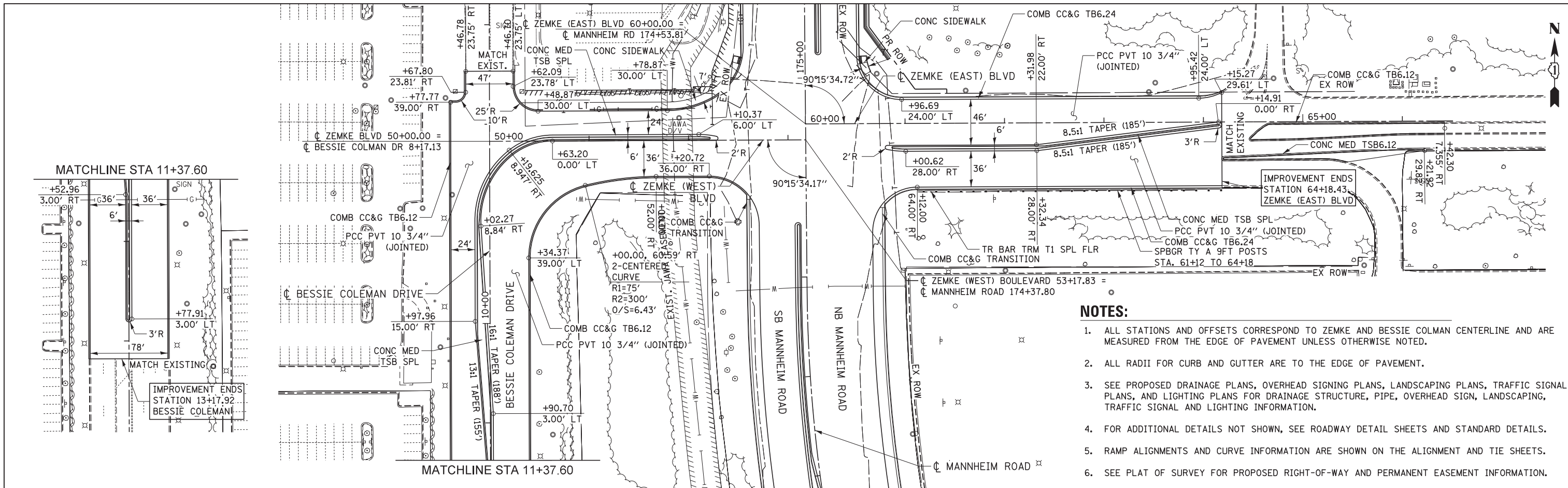
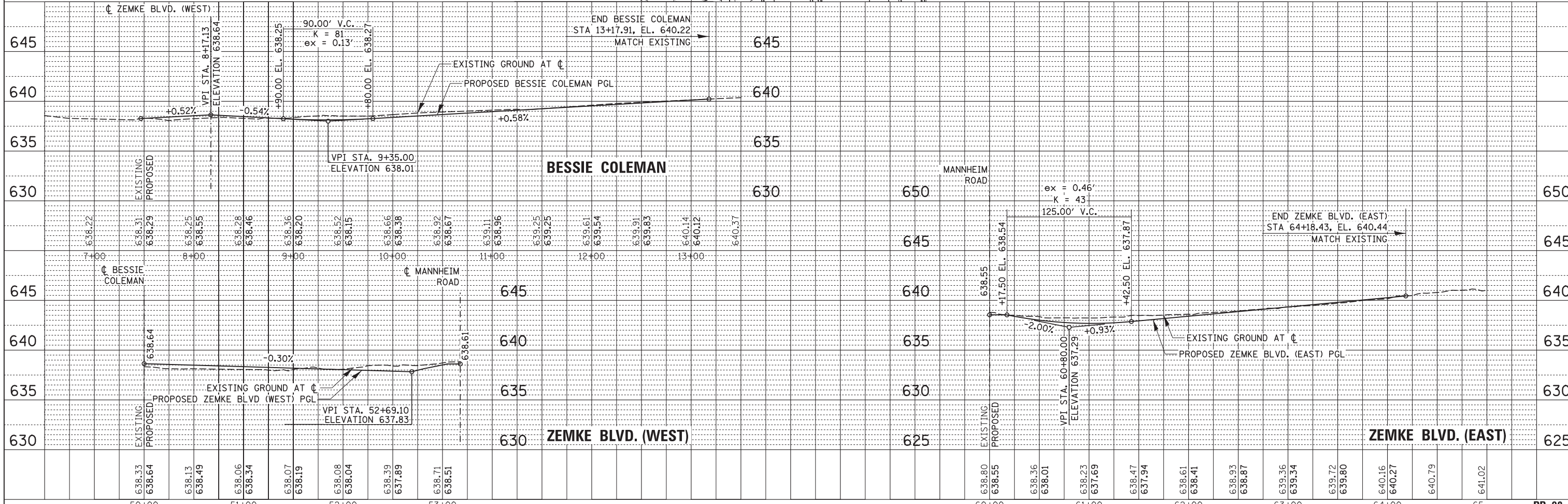


PLAN	SURVEYED	DATE
	PLOTTED	
	CHECKED	
	ALIGNED	
	FILED	
	NO.	
	BY	

PROFILE	SURVEYED	DATE
	PLOTTED	
	CHECKED	
	GRADES	
	STRUCTURE	
	NOTATIONS	
	CHRD	
	NO.	
	BY	



- NOTES:**
1. ALL STATIONS AND OFFSETS CORRESPOND TO ZEMKE AND BESSIE COLEMAN CENTERLINE AND ARE MEASURED FROM THE EDGE OF PAVEMENT UNLESS OTHERWISE NOTED.
 2. ALL RADII FOR CURB AND GUTTER ARE TO THE EDGE OF PAVEMENT.
 3. SEE PROPOSED DRAINAGE PLANS, OVERHEAD SIGNING PLANS, LANDSCAPING PLANS, TRAFFIC SIGNAL PLANS, AND LIGHTING PLANS FOR DRAINAGE STRUCTURE, PIPE, OVERHEAD SIGN, LANDSCAPING, TRAFFIC SIGNAL AND LIGHTING INFORMATION.
 4. FOR ADDITIONAL DETAILS NOT SHOWN, SEE ROADWAY DETAIL SHEETS AND STANDARD DETAILS.
 5. RAMP ALIGNMENTS AND CURVE INFORMATION ARE SHOWN ON THE ALIGNMENT AND TIE SHEETS.
 6. SEE PLAT OF SURVEY FOR PROPOSED RIGHT-OF-WAY AND PERMANENT EASEMENT INFORMATION.



USER NAME =	mikosir	DESIGNED	LLS/MMK	REVISED	-
		DRAWN	MMK	REVISED	-
PLOT SCALE =	50ft	CHECKED	LLS	REVISED	-
PLOT DATE =	23-OCT-2012	DATE	10/19/12	REVISED	-

STATE OF ILLINOIS
DEPARTMENT OF TRANSPORTATION

PLAN AND PROFILE
ZEMKE BOULEVARD

F.A.P. RTE.	SECTION	COUNTY	TOTAL SHEETS	SHEET NO.
330	0105-WRS	COOK	537	67
CONTRACT NO. 60P35				