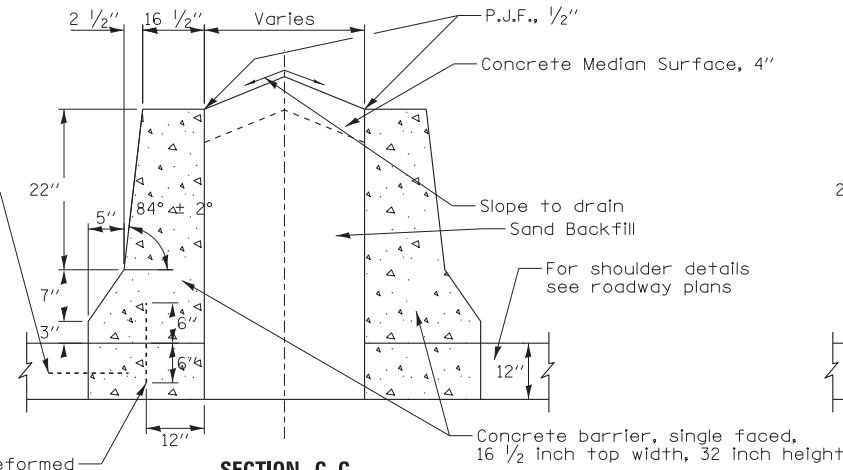


**NOTES**

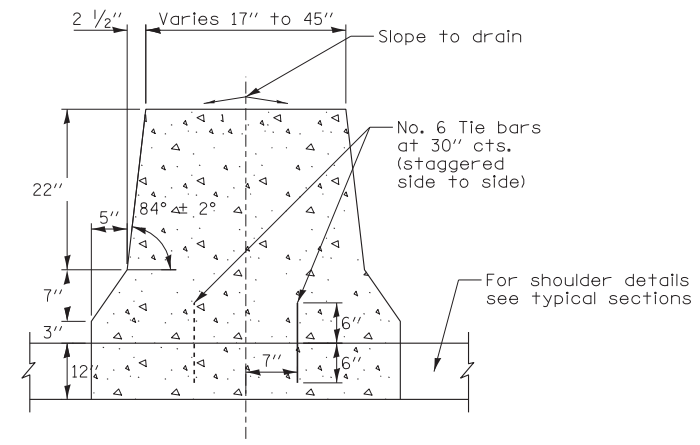
For ITS conduit details, see ITS plans.  
For lighting conduit details, see Lighting plans.

Optional construction joint:  
No. 8 deformed epoxy coated tie bar, 30" long, 24" c-c drill & grout in place (Included in cost of "CONCRETE BARRIER, SINGLE FACE, 32 INCH HEIGHT")

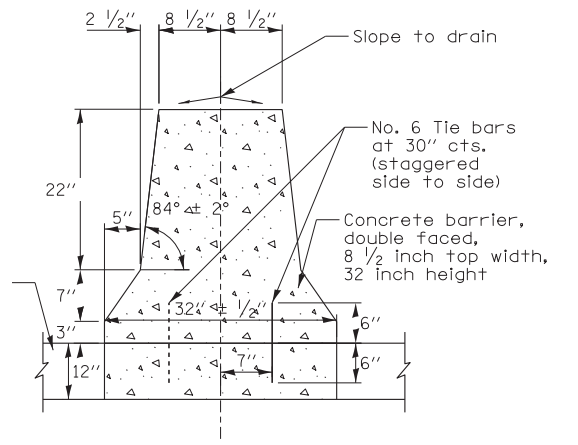
No. 6 deformed epoxy coated tie bar, 12" long @ 15" c-c drill & grout in place (Included in the cost of barrier base)



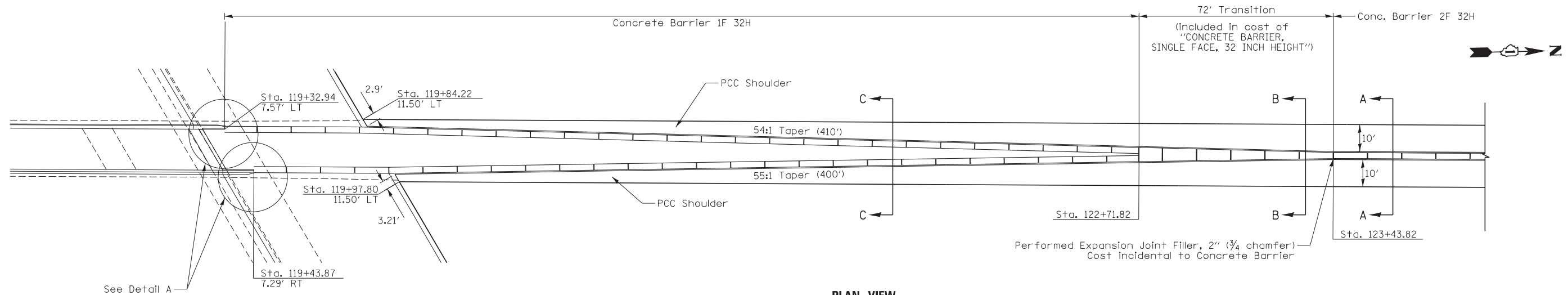
**SECTION C-C  
CONCRETE BARRIER SINGLE FACE, 32H  
AND CONCRETE SURFACE**



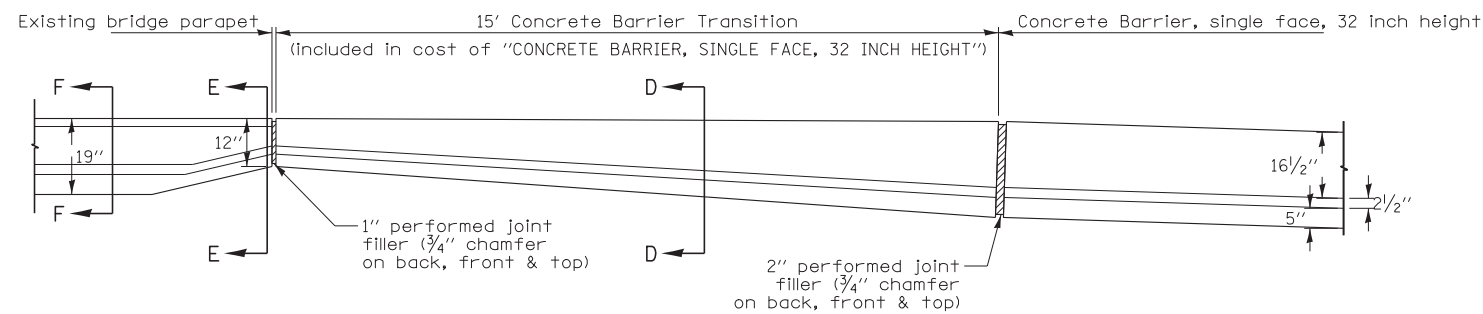
**SECTION B-B  
CONCRETE BARRIER  
TRANSITION**



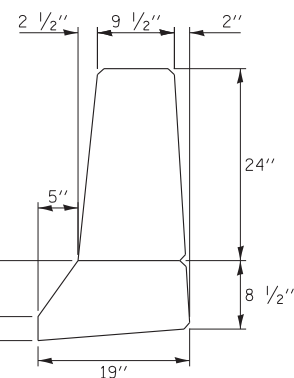
**SECTION A-A  
CONCRETE BARRIER  
DOUBLE FACE, 32 INCH HEIGHT**



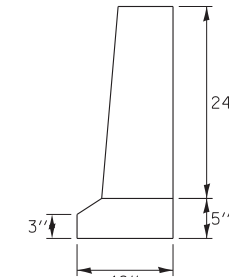
**PLAN VIEW  
CONCRETE BARRIER TRANSITION**



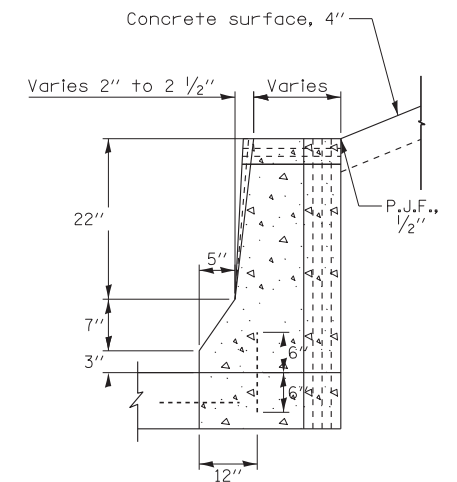
**DETAIL A  
PLAN VIEW**



**SECTION F-F  
PARAPET**



**SECTION E-E  
PARAPET**



**SECTION D-D  
CONCRETE BARRIER TRANSITION**



USER NAME = micosir	DESIGNED LLS/MMK	REVISED -
DRAWN MMK	REVISED -	
PLOT SCALE = 20:1	CHECKED LLS	REVISED -
PLOT DATE = 23-OCT-2012	DATE 10/19/12	REVISED -

STATE OF ILLINOIS  
DEPARTMENT OF TRANSPORTATION

ROADWAY DETAILS  
CONCRETE BARRIER TRANSITION

SCALE: 1" = 20' SHEET NO. 1 OF 7 SHEETS STA. TO STA.

F.A.P. RTE.	SECTION	COUNTY	TOTAL SHEETS	SHEET NO.
330	0105-WRS	COOK	537	70
CONTRACT NO. 60P35				
ILLINOIS FED. AID PROJECT				

PD-01