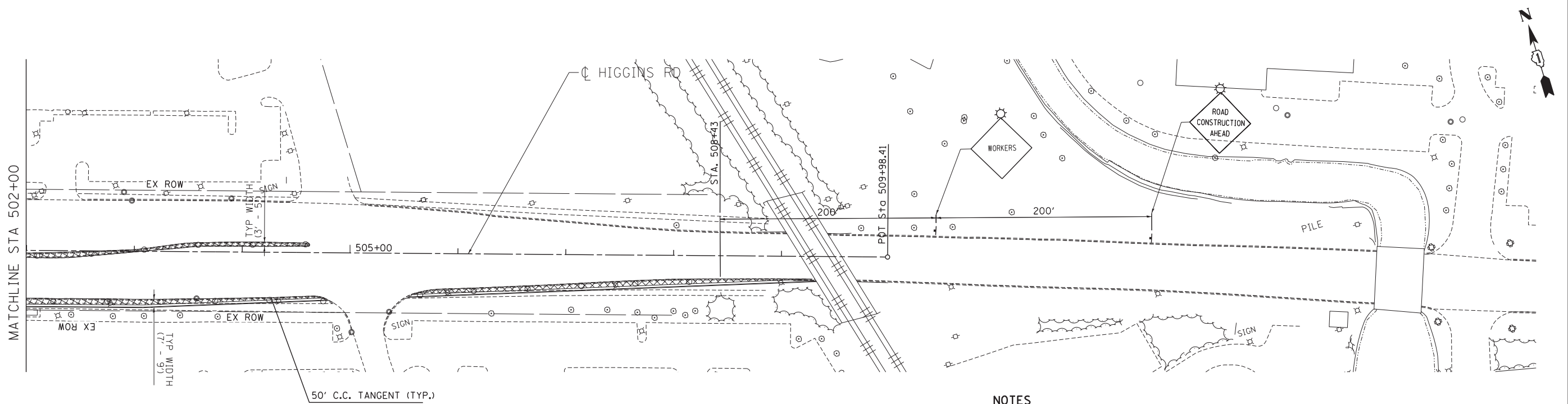
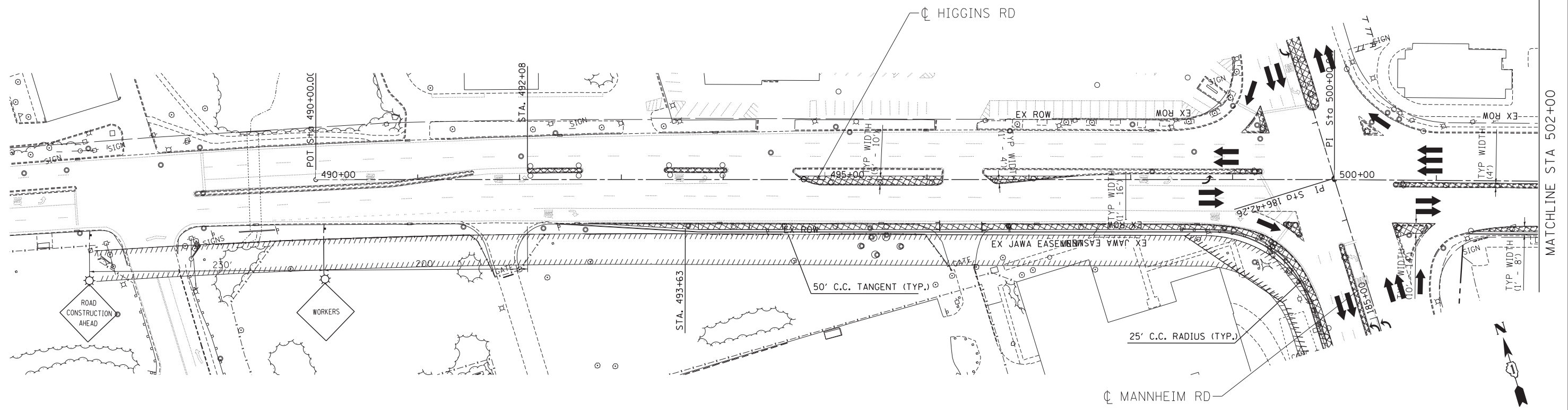


\D:\60P35-ALIGNMENT.DGN, \D:\60P35-TOPO.DGN, \D:\60P35-ALIGNMENT.DGN, \D:\60P35-STAGING.DGN, \D:\60P35-ROW.DGN, \D:\60P35-BORBERT.DGN
 10-05-2012, 14:54:46
 BAJZEKJ
 F:\DOC\EXP\CHI-00012584-02\COMMON\SET\TEMP\HEE\DOT\DI60P35-SHT-STAGING-10.DGN



MAINTENANCE OF TRAFFIC LEGEND

	WORK AREA		TRAFFIC DIRECTION		ARROW BOARD	①	PVT MK - LINE 4" WHITE	⑦	PVT MK - LINE 24" WHITE
	TEMPORARY PAVEMENT (TO BE CONSTRUCTED IN CURRENT STAGE)		BARRICADE, TYPE III, W/ TYPE A BI-DIRECTIONAL FLASHING LIGHT		DOUBLE VERTICAL PANEL	②	PVT MK - LINE 4" YELLOW	⑧	PVT MK - LINE 8" WHITE
	TYPE II BARRICADES OR DRUMS W/ TYPE C STEADY BURN LIGHT		PROPOSED SIGN		TEMPORARY CONCRETE BARRIER	③	PVT MK - DBL 4" YELLOW	T	TEMP PVT MK (SEE GENERAL NOTES SHT G-03)
	TYPE B MONO-DIRECTIONAL FLASHING LIGHT		RAMP CLOSED		WET REF TEM TAPE T3 (SEE GENERAL NOTES SHT G-03)	④	PVT MK - LINE 6" WHITE	W	WET REF TEM TAPE T3 (SEE GENERAL NOTES SHT G-03)
					PERM PVT MK (SEE PVT MK PLANS)	⑤	PVT MK - LINE 12"	P	PERM PVT MK (SEE PVT MK PLANS)
						⑥	PVT MK - LTRS & SYMB		

NOTES

1. MAINTAIN TRAFFIC ON EXISTING PAVEMENT DURING PRE-STAGE WORK.
2. IMPLEMENT DAILY LANE AND/OR SHOULDER CLOSURES AS REQUIRED IN ACCORDANCE WITH APPLICABLE HIGHWAY STANDARDS DURING PRE-STAGE WORK.
3. WORK REQUIRING A TEMPORARY LANE AND/OR SHOULDER CLOSURE SHALL BE RESTRICTED TO ONE SIDE OF THE EXISTING PAVEMENT AT A TIME FOR EACH DIRECTION OF TRAFFIC.
4. SIDE ROAD, INTERSECTION, AND DRIVEWAY TRAFFIC CONTROL SHALL BE IN ACCORDANCE WITH DISTRICT DETAIL TC-10.