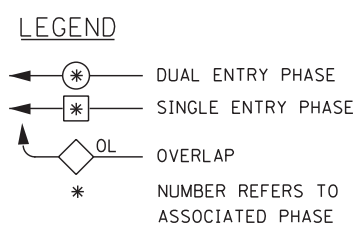
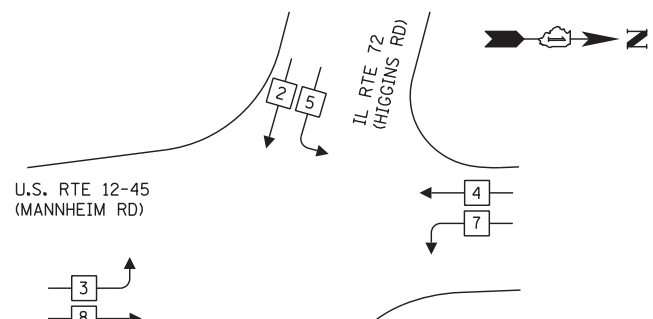
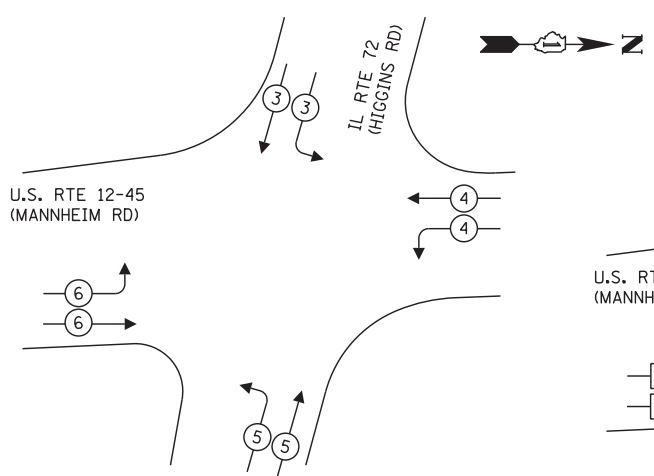


**CONTROLLER SEQUENCE**  
(STAGE 1, 1A, 1B, 1BB, 2 AND 3)

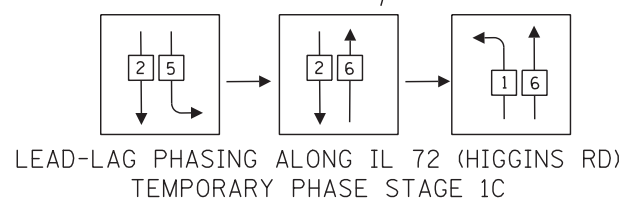
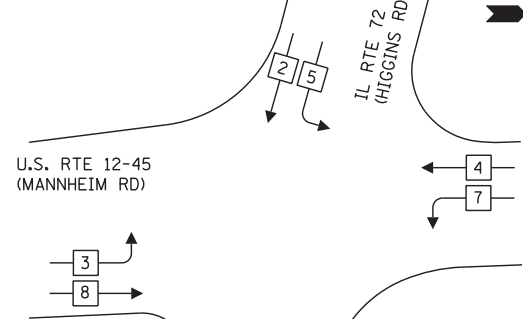


**EMERGENCY VEHICLE PREEMPTION SEQUENCE**

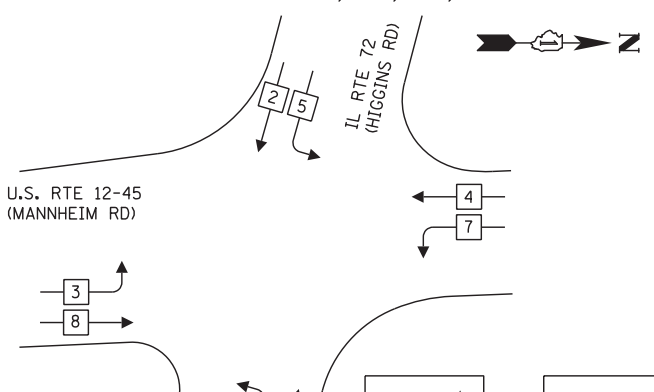


TEMPORARY EMERGENCY VEHICLE PREEMPTORS				
EMERGENCY VEHICLE PREEMPTOR	3	4	5	6
MOVEMENT				

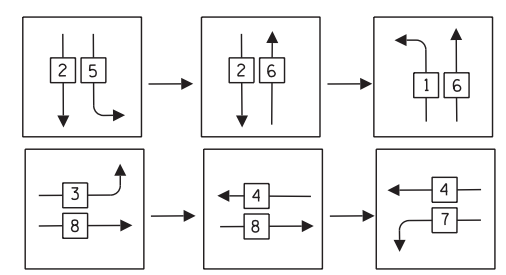
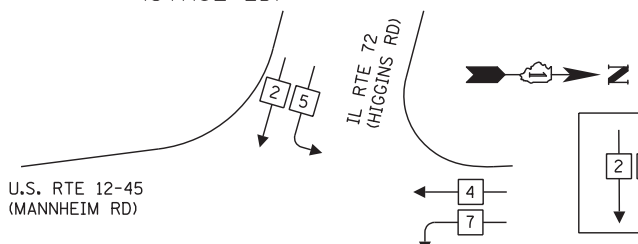
**CONTROLLER SEQUENCE**  
(STAGE 1C)



**CONTROLLER SEQUENCE**  
(STAGE 1D, 2A, 2B, 2C & 2E)

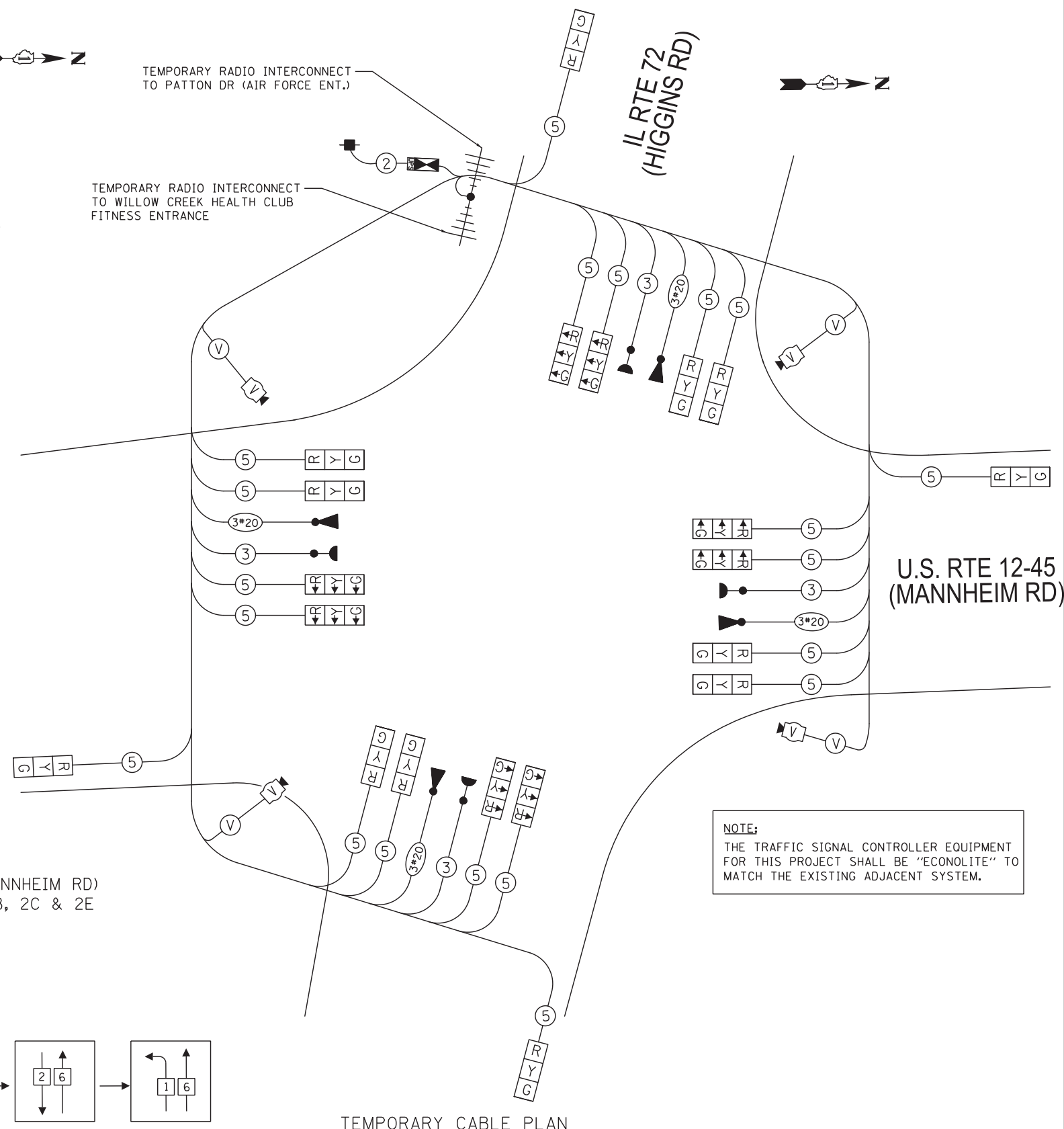


**CONTROLLER SEQUENCE**  
(STAGE 2D)



TEMPORARY RADIO INTERCONNECT TO PATTON DR (AIR FORCE ENT.)

TEMPORARY RADIO INTERCONNECT TO WILLOW CREEK HEALTH CLUB FITNESS ENTRANCE



**TEMPORARY CABLE PLAN**  
STAGE 1 THRU 1D  
STAGE 2 THRU 3

**NOTE:**  
THE TRAFFIC SIGNAL CONTROLLER EQUIPMENT FOR THIS PROJECT SHALL BE "ECONOLITE" TO MATCH THE EXISTING ADJACENT SYSTEM.

I.D.O.T. TRAFFIC SIGNAL INSTALLATION ELECTRICAL SERVICE REQUIREMENTS					TOTAL WATTAGE
TYPE	NO. LAMPS	WATTAGE INCAND.	WATTAGE LED	%OPERATION	
SIGNAL (RED)	20		17	0.50	170
(YELLOW)	20		25	0.25	125
(GREEN)	20		15	0.25	75
ARROW	-		12	0.10	-
PED. SIGNAL	-		25	1.00	-
CONTROLLER	-		100.00	1.00	100
ILLUM. SIGN	-		-	-	-
VIDEO SYSTEM	-	150.00	-	1.00	150
FLASHER					
ENERGY COSTS TO: ILLINOIS DEPARTMENT OF TRANSPORTATION DIVISION OF HIGHWAY/DISTRICT 1 201 WEST CENTER COURT/SCHAUMBURG, ILLINOIS 60196-1096					TOTAL = 620
ENERGY SUPPLY CONTACT: STEVE FITZGERALD PHONE: (708) 235-2327 COMPANY: ComEd					