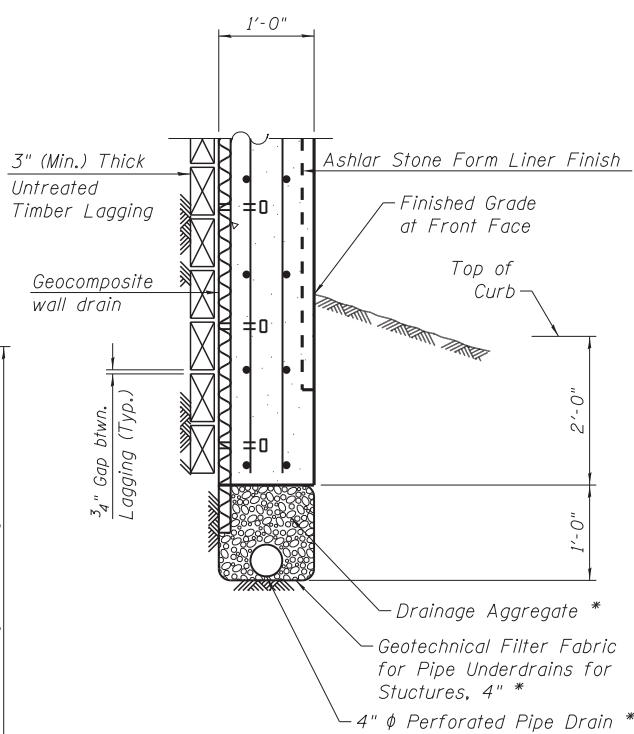
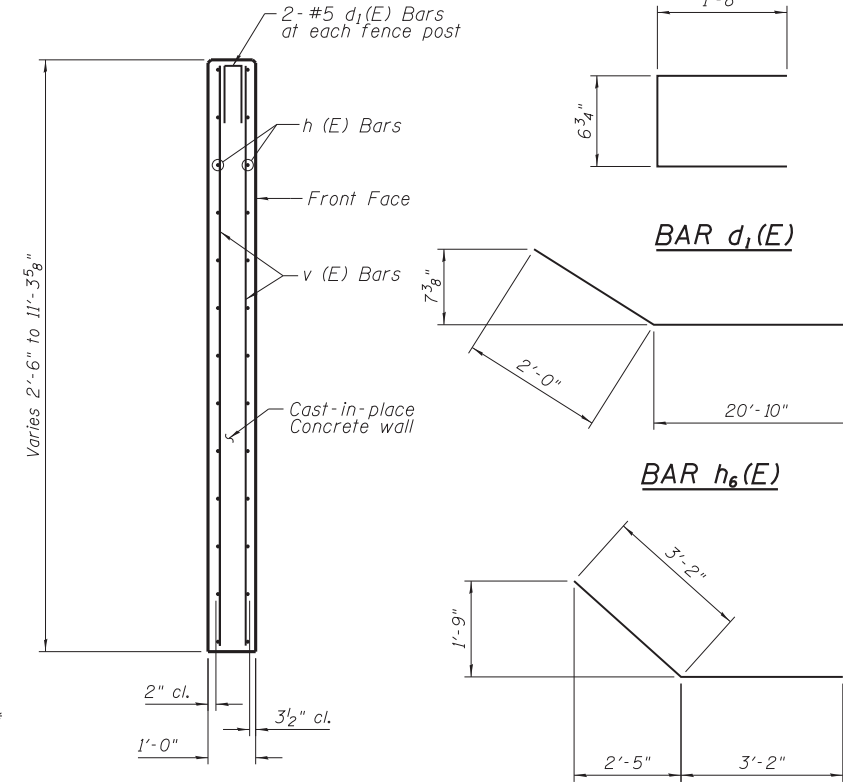


VERTICAL SECTION THRU SOLDIER PILE WALL WITH TYPE "B" GUTTER

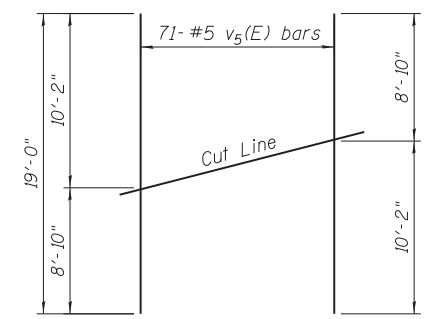


PIPE UNDERDRAIN DETAIL

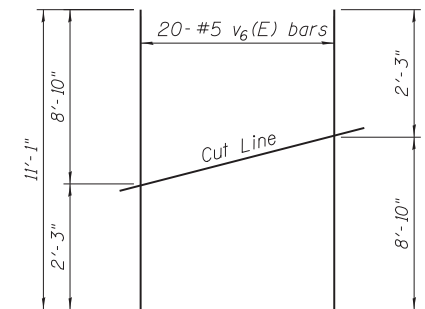
* Included in the cost of Pipe Underdrains for Structures



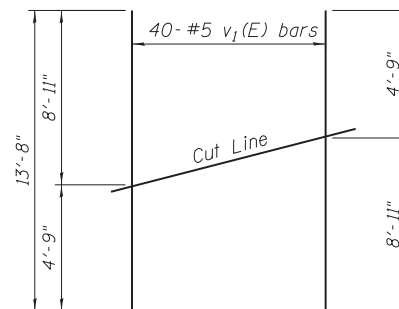
TYPICAL WALL REINFORCING SECTION



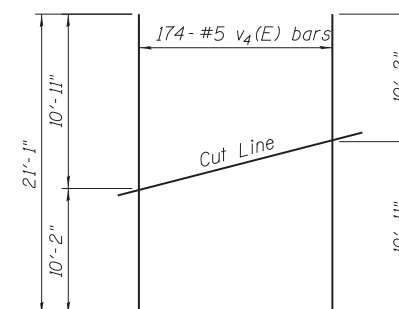
FIELD CUTTING DIAGRAM
Order v5(E) full length. Cut as shown and use remainder of bars in opposite face.



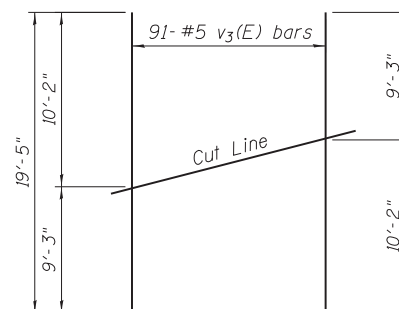
FIELD CUTTING DIAGRAM
Order v6(E) full length. Cut as shown and use remainder of bars in opposite face.



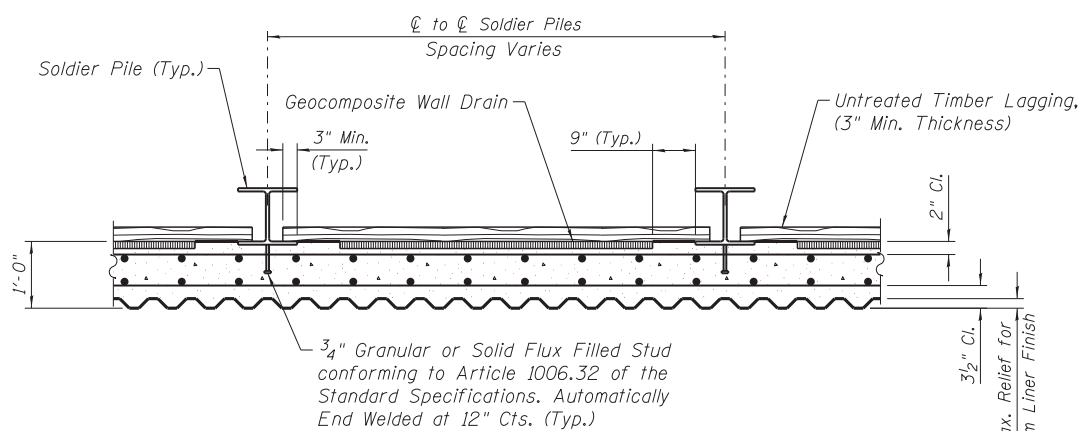
FIELD CUTTING DIAGRAM
Order v1(E) full length. Cut as shown and use remainder of bars in opposite face.



FIELD CUTTING DIAGRAM
Order v4(E) full length. Cut as shown and use remainder of bars in opposite face.



FIELD CUTTING DIAGRAM
Order v3(E) full length. Cut as shown and use remainder of bars in opposite face.



HORIZONTAL SECTION THRU SOLDIER PILE WALL

The Contractor is responsible for the design and performance of the lagging using no less than a 3 in. nominal rough-sawn thickness and timber with a minimum allowable bending stress of 1000 psi.

BILL OF MATERIAL
STRUCTURE NO. 016-2009

Bar	No.	Size	Length	Shape
d ₁ (E)	104	#5	3'-11"	U
h ₁ (E)	48	#5	42'-5"	—
h ₂ (E)	20	#5	57'-0"	—
h ₃ (E)	108	#5	46'-3"	—
h ₄ (E)	24	#5	46'-0"	—
h ₅ (E)	4	#5	36'-5"	—
h ₆ (E)	2	#5	22'-10"	—
h ₇ (E)	20	#5	6'-4"	—
h ₈ (E)	20	#5	39'-8"	—
v ₁ (E)	40	#5	13'-8"	—
v ₂ (E)	114	#5	9'-0"	—
v ₃ (E)	91	#5	19'-5"	—
v ₄ (E)	174	#5	21'-1"	—
v ₅ (E)	71	#5	19'-0"	—
v ₆ (E)	20	#5	11'-1"	—
Reinforcement bars, epoxy coated			Pounds	20,210
Concrete Structures			Cu. Yds.	167.4

C:\cadd\lib\pw\ssstegman\p\great_lakes\dms47849\016-2009-60P35-06-Det.dgn



USER NAME =	DESIGNED - SEA	REVISED
PLOT SCALE =	CHECKED - CJE	REVISED
PLOT DATE = 10/19/2012	DRAWN - SCS	REVISED
	CHECKED - SEA	REVISED

STATE OF ILLINOIS
DEPARTMENT OF TRANSPORTATION

TYPICAL SECTIONS AND DETAILS
STRUCTURE NO. 016-2009

SHEET NO. 6 OF 10 SHEETS

F.A.P. RTE. 330	SECTION 0105-WRS	COUNTY COOK	TOTAL SHEETS 537	SHEET NO. 305
			CONTRACT NO. 60P35	
ILLINOIS FED. AID PROJECT				