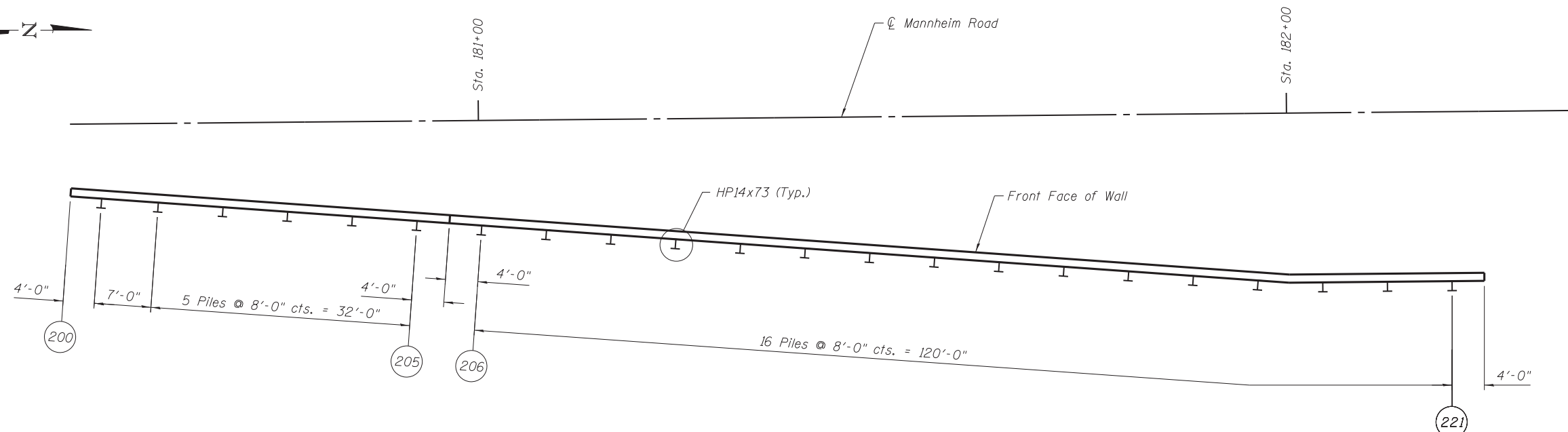
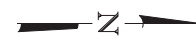


ELEVATION

Minimum lap for #5 h bars shall be 2'-7".



PLAN

NOTES:

See Sheet 1 of 10 for Station and Offset Locations of Front Face of Wall.
For Sections A-A and B-B, see Sheet 5 of 10.

C:\caddlib\pw\ssstegman\pw\great_lakes\dms47849\016-Z010-60P35-03-P&E 01.dgn



USER NAME =	DESIGNED - SEA	REVISED
	CHECKED - CJE	REVISED
PLOT SCALE =	DRAWN - SCS	REVISED
PLOT DATE = 10/19/2012	CHECKED - SEA	REVISED

**STATE OF ILLINOIS
DEPARTMENT OF TRANSPORTATION**

**PLAN AND ELEVATION
STRUCTURE NO. 016-2010**

SHEET NO. 3 OF 10 SHEETS

F.A.P. RTE. 330	SECTION 0105-WRS	COUNTY COOK	TOTAL SHEETS 537	SHEET NO. 312
				CONTRACT NO. 60P35
ILLINOIS FED. AID PROJECT				