

NOTES

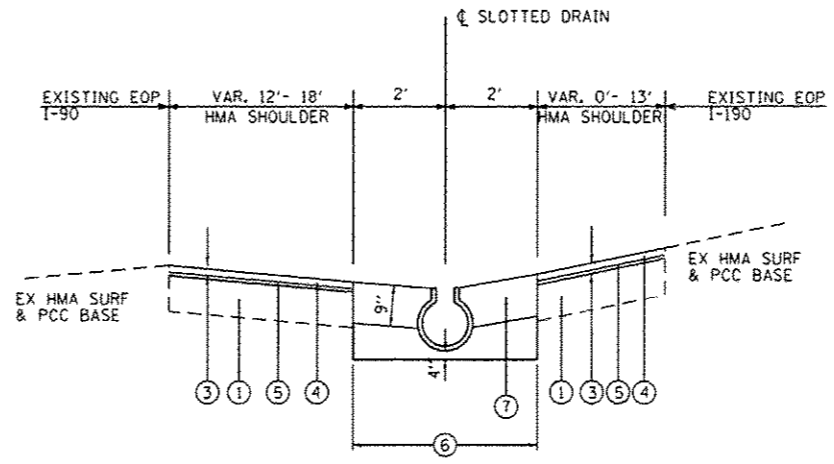
CLASS SI CONCRETE SHALL BE USED THROUGHOUT.
 THE SLOTTED DRAIN SHALL BE CORRUGATED PIPE CULVERT WITH INTEGRAL SLOTTED DRAINS. BEFORE PLACING THE CONCRETE ADJACENT TO THE PIPE, THE SLOT SHALL BE COVERED BY EITHER THIN, FLAT METAL SHEETING OR BY A BOARD NOTCHED TO FIT OVER THE GRATE BARS. THIS COVERING MUST FIT CLOSELY IN THE SLOT TO PREVENT ENTRY OF CONCRETE INTO THE PIPE.
 PAVING OVER THE SLOTTED DRAIN WILL THEN BE ONE CONTINUOUS OPERATION OVER THE PROTECTED DRAIN. THE PROTECTION FOR THE DRAIN SLOT SHALL THEN BE REMOVED. THE PIPE SHALL DRAIN INTO THE SIDE OF THE INLET.
 THE OPENING WHERE THE SLOT IS REMOVED SHALL BE COVERED TO PREVENT CONCRETE FROM ENTERING THE PIPE.
 THE CORRUGATED STEEL PIPE USED IN THE SLOTTED DRAIN SHALL MEET THE REQUIREMENTS OF AASHTO M-36/ASTM A 760. THE CMP SHALL BE GALVANIZED OR ALUMINIZED STEEL TYPE 2. STEEL GRATING SHALL MEET THE GALVANIZING REQUIREMENTS OF AASHTO M-111. THIS WORK WILL BE PAID FOR AT THE CONTRACT UNIT PRICE PER FOOT FOR SLOTTED DRAIN PIPE, AND SHALL INCLUDE ELBOWS.
 USE APPROVED END CAP TO PREVENT CONCRETE ENTRY INTO THE PIPE DURING GUTTER CONSTRUCTION ON THE UPSTREAM END OF PIPE.
 DIMENSIONS ARE SUBJECT TO THE FOLLOWING MANUFACTURING TOLERANCES:
 1. VERTICAL BOW $\pm 3/8"$
 2. HORIZONTAL BOW $\pm 9/8"$
 3. TWIST $\pm 1/2"$

THE REMOVAL OF THE EXISTING SLOTTED DRAIN SHALL BE INCLUDED IN THE COST OF THE PAVEMENT REMOVAL.

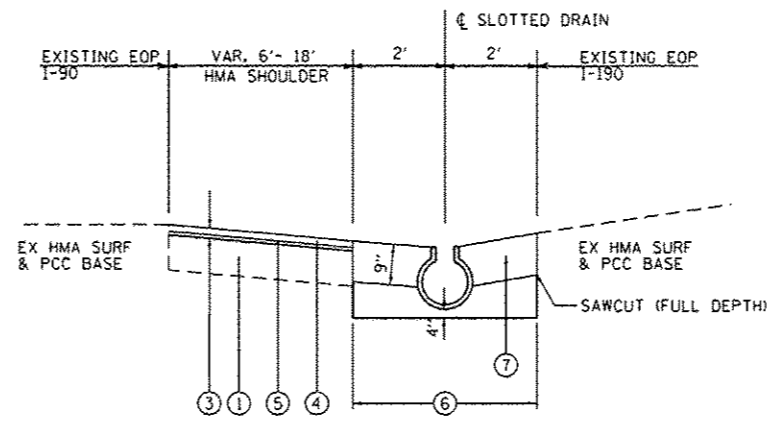
THE 4" AGGREGATE BASE COURSE MATERIAL TYPE B AND 9" PCC GUTTER ARE INCLUDED IN THE COST OF THE SLOTTED DRAIN.

ALL TRAFFIC CONTROL DEVICES AND ADVANCED SIGNING FOR THE PROPOSED SLOTTED DRAIN WORK SHALL BE PLACED ACCORDING TO STATE HIGHWAY STANDARDS 701400 AND 701401.

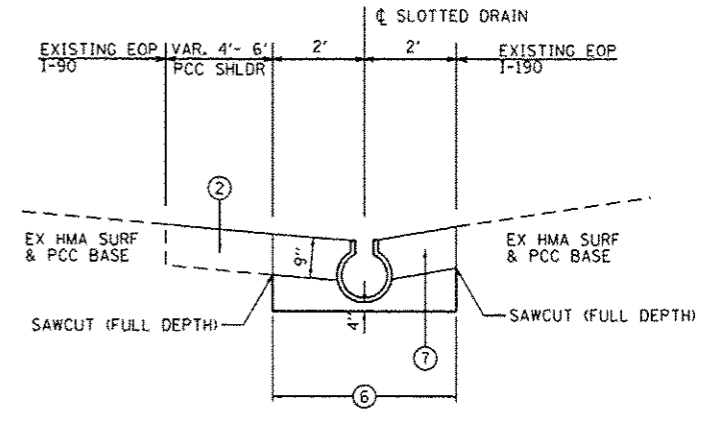
ALL SLOTTED DRAIN WORK SHALL BE PERFORMED DURING NIGHTTIME HOURS AS OUTLINED IN THE SPECIAL PROVISIONS. DURING DAYTIME HOURS, ALL OPEN HOLES SHALL BE COVERED WITH A STEEL PLATE AND THE GORE AREA SHALL BE BARRICADED. BOTH STEEL PLATES AND BARRICADES SHALL BE INSTALLED PER THE SATISFACTION OF THE ENGINEER. THE COST OF THE STEEL PLATE AND ALL TRAFFIC CONTROL DEVICES SHALL BE INCLUDED IN THE COST OF TRAFFIC CONTROL AND PROTECTION (EXPRESSWAY).



STA. 143+55 TO 145+28.3



STA. 145+28.3 TO 147+57.3



STA. 147+57.3 TO 150+21.0

LEGEND

- ① EXISTING HMA SHOULDER
- ② EXISTING PCC SHOULDER
- ③ PROP. HOT-MIX ASPHALT SURFACE REMOVAL, VARIABLE DEPTH
- ④ PROP. HMA SURFACE COURSE, MIX "D", N70, 1 1/2"
- ⑤ PROP. HMA BINDER COURSE, IL 19.0, N70, 2 1/4"
- ⑥ 12" SLOTTED DRAIN INCLUDING A 4" AGGREGATE BASE COURSE MATERIAL TYPE B
- ⑦ 9" PCC GUTTER

PROPOSED SLOTTED DRAIN GRADES

STATION	I-90 EOP EXISTING	I-90 EDGE SD		SLOTTED DRAIN		I-90 EDGE SD		I-90 EOP EXISTING	NOTES
		EXISTING	PROPOSED	EXISTING	PROPOSED	EXISTING	PROPOSED		
143+48.0	636.11	635.96				636.01		636.26	BEGIN CONCRETE
143+55.0	636.08	635.92	635.94	635.86	635.88	635.98	635.99	636.27	BEGIN SLOTTED DRAIN
144+00.0	635.89	635.90	635.86	635.71	635.86	635.79	635.92	636.32	
144+50.0	635.92	635.77	635.85	635.76	635.84	635.88	635.92	636.39	
144+94.0	636.05	635.84	635.87	635.73	635.82	635.93	635.92	636.48	1 1/4 DEGREE BAND
145+00.0	636.06	635.84	635.87	635.74	635.81	635.92	635.90	636.49	
145+28.3	636.11	635.98	635.98	635.76	635.80	635.89	635.87	636.49	RECONSTRUCT MANHOLE
145+50.0		636.15		636.04	635.90	636.09	635.98	636.65	
146+00.0		636.29		636.33	636.12	636.35	636.21	636.76	
146+50.0		636.54		636.55	636.35	636.51	636.42	636.81	
147+00.0		636.66		636.64	636.57	636.69	636.62	636.85	
147+50.0		636.87		636.79	636.80	636.83	636.84	636.98	
147+57.3		636.89		636.81	636.83	636.85		637.00	RECONSTRUCT MANHOLE
148+00.0		637.04		636.89	636.90	636.93		637.04	
148+50.0		637.12		637.07	636.98	637.07		637.06	
149+00.0		637.22		637.22	637.06	637.21		637.20	
149+50.0		637.33		637.32	637.14	637.32		637.31	
150+00.0		637.41		637.24	637.22	637.25		637.27	
150+21.0				637.26					RECONSTRUCT MANHOLE

H:\Jobs\2011\20110102-29\CAD\ST1-e.dgn 10/15/2012 1:33:56 PM



USER NAME = 1485	DESIGNED - EF	REVISED -
PL0T SCALE = 48.000 / 1"	DRAWN - EF	REVISED -
PL0T DATE = 10/15/2012	CHECKED - RS	REVISED -
	DATE - 09/21/2012	REVISED -

STATE OF ILLINOIS
DEPARTMENT OF TRANSPORTATION

I-190 (O'HARE AIRPORT TO I-90)
SLOTTED DRAIN DETAILS

SCALE: 1"=20' SHEET 1 OF 1 SHEETS STA. TO STA.

Rev. 1-3-13		COUNTY	TOTAL SHEETS	SHEET NO.
F.A.T. RTE.	SECTION			
190	(01D1.6 & 01O2.5)RS-2	COOK	85	31
			CONTRACT NO. 60133	
ILLINOIS FED. AID PROJECT				