

**GENERAL NOTES**

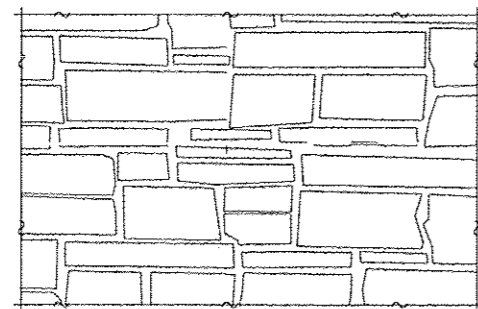
- Fasteners shall be ASTM A325 Type I, mechanically galvanized bolts. Bolts  $\frac{3}{8}$  in.  $\phi$ , holes  $\frac{15}{16}$  in.  $\phi$ , unless otherwise noted.
- Calculated weight of Structural Steel = 184,130 pounds (AASHTO M 270 Grade 50)  
Calculated weight of Structural Steel = 23,840 pounds (AASHTO M 270 Grade 36)
- No field welding is permitted except as specified in the contract documents.
- Reinforcement bars designated (E) shall be epoxy coated.
- If the Contractor elects to use cantilever forming brackets on the exterior beams or girders, the brackets shall be placed at the same locations as required for the hardwood blocks in Article 503.06(b) of the Standard Specifications. If additional cantilever forming brackets are required, hardwood blocking shall be wedged between the exterior and first interior beam at each of these additional bracket locations.
- The Organic Zinc Rich Primer / Epoxy / Urethane Paint System shall be used for painting of new structural steel except where otherwise noted. The entire system shall be shop applied, with the exception of masked off connection surfaces, field installed fasteners and damaged areas shall be touched up in the field. The color of the final finish coat for all steel surfaces shall be Gray, Munsell No. 5B 7/1.
- Layout of the slope protection system may be varied to suit ground conditions in the field as directed by the Engineer.
- The embankment configuration shown shall be the minimum that must be placed and compacted prior to construction of the abutments.
- Excavation behind existing abutment walls shall be performed to balance front and back soil pressure before removing the existing superstructure. The Contractor shall sawcut the upper portion of the existing abutment at the stage removal line before Stage I removal to ensure the remaining portion will not be prematurely damaged.
- The Contractor is advised that the existing structure is in a deteriorated condition with reduced load carrying capacity. It is the Contractor's responsibility to account for the condition of the structure when developing construction procedures for removal and replacement of the structure.

**TOTAL BILL OF MATERIAL**

Item	Unit	Super	Sub	Total
Stone Riprap, Class A4	Sq. Yd.		577	577
Filter Fabric	Sq. Yd.		746	746
Removal of Existing Structures	Each		1	1
Structure Excavation	Cu. Yd.		445	445
Concrete Structures	Cu. Yd.		102.6	102.6
Concrete Superstructure	Cu. Yd.	507.1		507.1
Bridge Deck Grooving	Sq. Yd.	707		707
Form Liner Textured Surface	Sq. Ft.	1645		1645
Protective Coat	Sq. Yd.	1293		1293
Furnishing and Erecting Structural Steel	L. Sum	1		1
Stud Shear Connectors	Each	4191		4191
Reinforcement Bars, Epoxy Coated	Pound	108,530	17,980	126,510
Bar Splicers	Each	581	112	693
Furnishing Metal Shell Piles 14" x 0.312"	Foot		1734	1734
Driving Piles	Foot		1734	1734
Test Pile Metal Shells	Each		2	2
Pile Shoes	Each		30	30
Name Plates	Each	1		1
Anchor Bolts, 1"	Each		44	44
Box Culvert End Sections, Culvert No. 1	Each		1	1
Box Culvert End Sections, Culvert No. 2	Each		1	1
Precast Concrete Box Culverts 5'x'5'	Foot		56	56
Precast Concrete Box Culverts 6'x'5'	Foot		56	56
Geocomposite Wall Drain	Sq. Yd.		140	140
Construction Vibration Monitoring	L. Sum		1	1
Parapet Railing, Special	Foot	168		168
Granular Backfill for Structures	Cu. Yd.		187	187
Staining Concrete Structures	Sq. Yd.		183	183
Architectural Precast Concrete Panel	Each		20	20
Steel Railing (Special)	Foot	272		272
Temporary Sheet Piling	Sq. Ft.		520	520
Pipe Underdrains for Structures 4"	Foot		184	184
Temporary Soil Retention System	Sq. Ft.		259	259

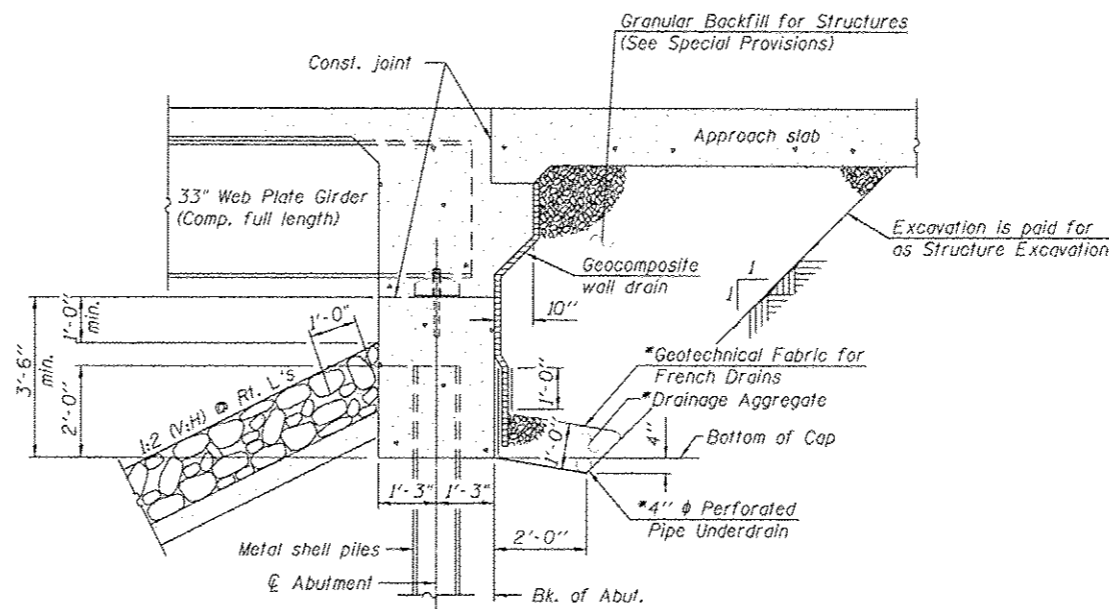
**INDEX OF SHEETS**

- General Plan and Elevation
- General Data
- Foundation Plan
- Stage Construction Details
- Temporary Concrete Barrier for Stage Construction
- Top of Slab Elevations
- Top of Approach Slab Elevations
- Deck Plan and Cross Section
- Superstructure Details
- Integral Abutment Diaphragm Details
- Bridge Approach Slab Details
- Concrete Bridge Rolling
- Steel Bridge Railing
- Architectural Precast Concrete Panel
- Framing Plan
- Structural Steel Details
- West Abutment
- East Abutment
- Culvert Plan and Elevation
- Metal Shell Pile Details
- Bar Splicer Assembly and Mechanical Splicer Details
- Boring Logs



**FORM LINER TEXTURED SURFACE**

Note:  
Form Liner Textured Surface shall meet the requirements of Custom Rock Pattern #12010 Minnehaha Blend or approved equal (See Special Provision).  
Form liner textures or patterns of any shape and length shall be inset into the face of the parapet up to  $\frac{1}{2}$ " deep and 1" wide.



\*Included in the cost of Pipe Underdrains for Structures.

**SECTION THRU INTEGRAL ABUTMENT**

Notes:  
All drainage system components shall extend to 2'-0" from the end of each wingwall except an outlet pipe shall extend until intersecting with the side slopes. The pipes shall drain into concrete headwalls. (See Article 601.05 of the Standard Specifications and Highway Standard 601101).

12/21/2012 10:37:17 AM - G:\CHINA\98\AB-1\eggs\CADD\Sheets\0162844-D60135-02-C01A.dgn



USER NAME: jrmohar	DESIGNED: JRM	REVISED: 12/19/2012 JRM
PLOT SCALE: 2:8.8888 1" = 10'	CHECKED: MDS	REVISOR: -
PLOT DATE: 12/21/2012	DRAWN: DMG	REVISOR: -
	CHECKED: MDS	REVISOR: -

**STATE OF ILLINOIS  
DEPARTMENT OF TRANSPORTATION**

**GENERAL DATA  
STRUCTURE NO. 016-2844**

SHEET NO. 2 OF 30 SHEETS

F.A.P. RTE. 0305	SECTION 11920.01,1518,2022&1922.4B/R	COUNTY COOK	TOTAL SHEETS 919	SHEET NO. 452
CONTRACT NO. 60T35			ILLINOIS FED. AID PROJECT	