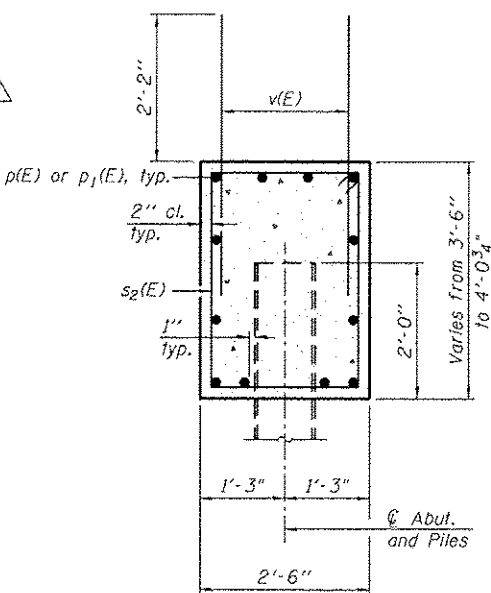
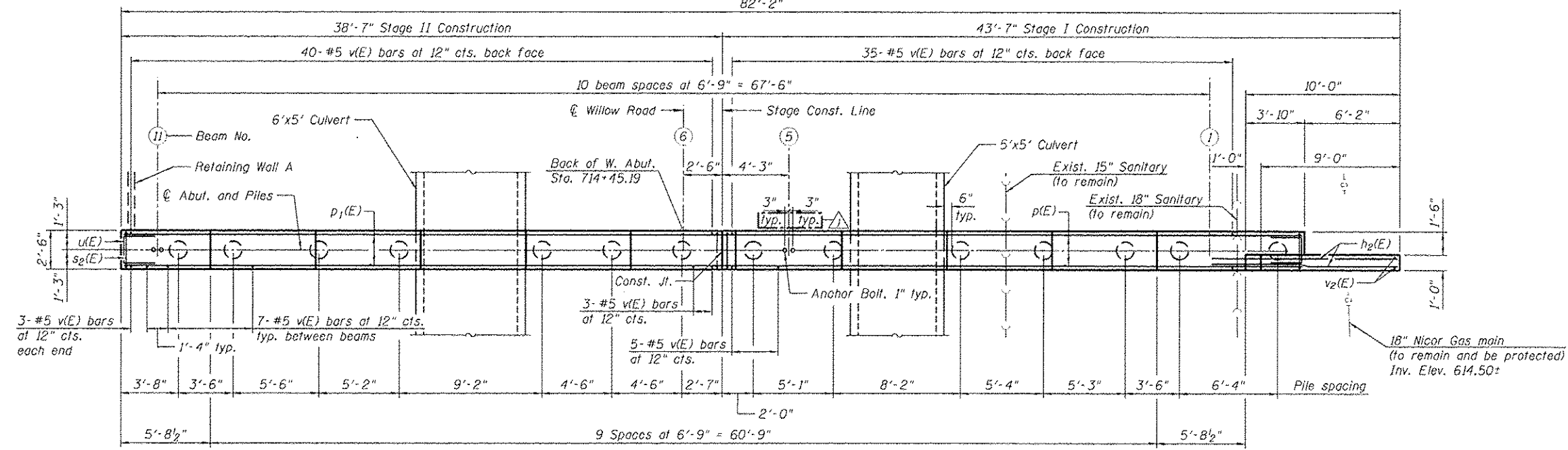


**ELEVATION**  
(Looking West)

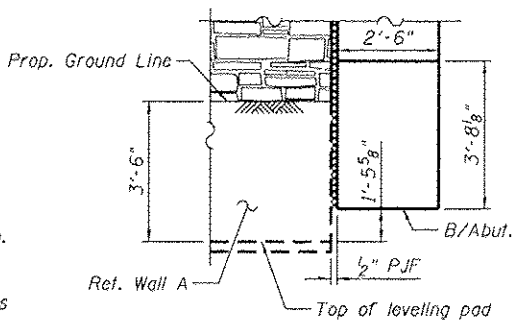


**SEC. THRU ABUT.**

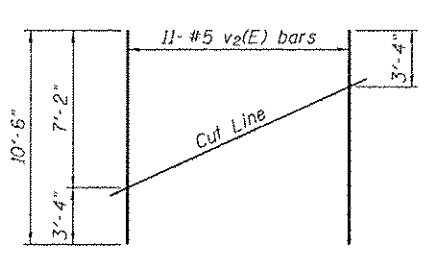


**PLAN**

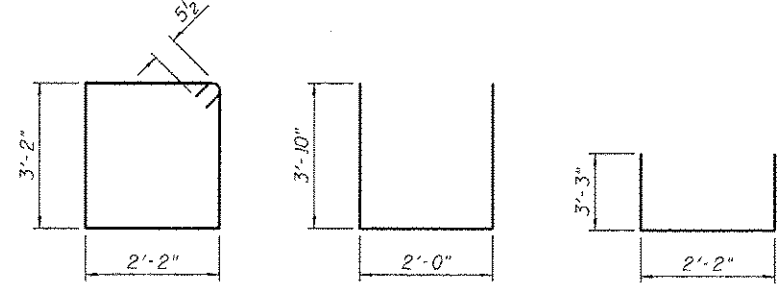
**PILE DATA**  
(See 3rd note on Sheet 3 of 30)  
Type: Metal Shell-14 in. dia. x 0.312 in. walls with Pile Shoes  
Nominal Required Bearing: 516 kips  
Factored Resistance Available: 284 kips  
Est. Length: 63'  
No. Production Piles: 13  
No. Test Piles: 1



**SECTION A-A**



**FIELD CUTTING DIAGRAM**



**BAR s2(E) BAR u(E) BAR s3(E)**

**BILL OF MATERIAL**

Bar No.	Size	Length	Shape
h2(E)	18 #5	14'-2"	—
p(E)	12 #8	37'-1"	—
p1(E)	12 #8	38'-3"	—
p2(E)	4 #5	14'-0"	—
p3(E)	4 #5	19'-0"	—
s2(E)	73 #5	11'-7"	□
s3(E)	35 #5	8'-8"	□
v(E)	152 #5	4'-4"	—
v2(E)	11 #5	10'-6"	—
u(E)	8 #6	9'-8"	□
Structure Excavation	Cu. Yd.	169	
Concrete Structures	Cu. Yd.	27.9	
Reinforcement Bars, Epoxy Coated	Pound	4940	
Furnishing Metal Shell Piles 14" x 0.312"	Foot	819	
Driving Piles	Foot	819	
Test Pile Metal Shells	Each	1	
Pile Shoes	Each	14	

**Notes:**  
Pour steps monolithically with cap.  
For details of Bar Splicers, see sheet 25 of 30.  
For details of piles, see sheet 24 of 30.

4:27:40 PM - G:\CH\1059\B\1059\CADD\Sheets\0162844-0160135-21-ABUT1.dgn



USER NAME: jrmikow  
DESIGNED: JRM  
CHECKED: MDS  
PLOT SCALE: 8.0/8.000 1" = 30'  
PLOT DATE: 12/19/2012

DESIGNED: JRM  
CHECKED: MDS  
DRAWN: DMG  
CHECKED: MDS

REVISED: 12/19/2012 JRM  
REVISED: -  
REVISED: -  
REVISED: -

**STATE OF ILLINOIS**  
**DEPARTMENT OF TRANSPORTATION**

**WEST ABUTMENT**  
**STRUCTURE NO. 016-2844**  
SHEET NO. 21 OF 30 SHEETS

F.A.P. RTE.	SECTION	COUNTY	TOTAL SHEETS	SHEET NO.
0305	11920.01.1518.202281922.4BIR	COOK	919	471

CONTRACT NO. 60T35  
ILLINOIS FED. AID PROJECT