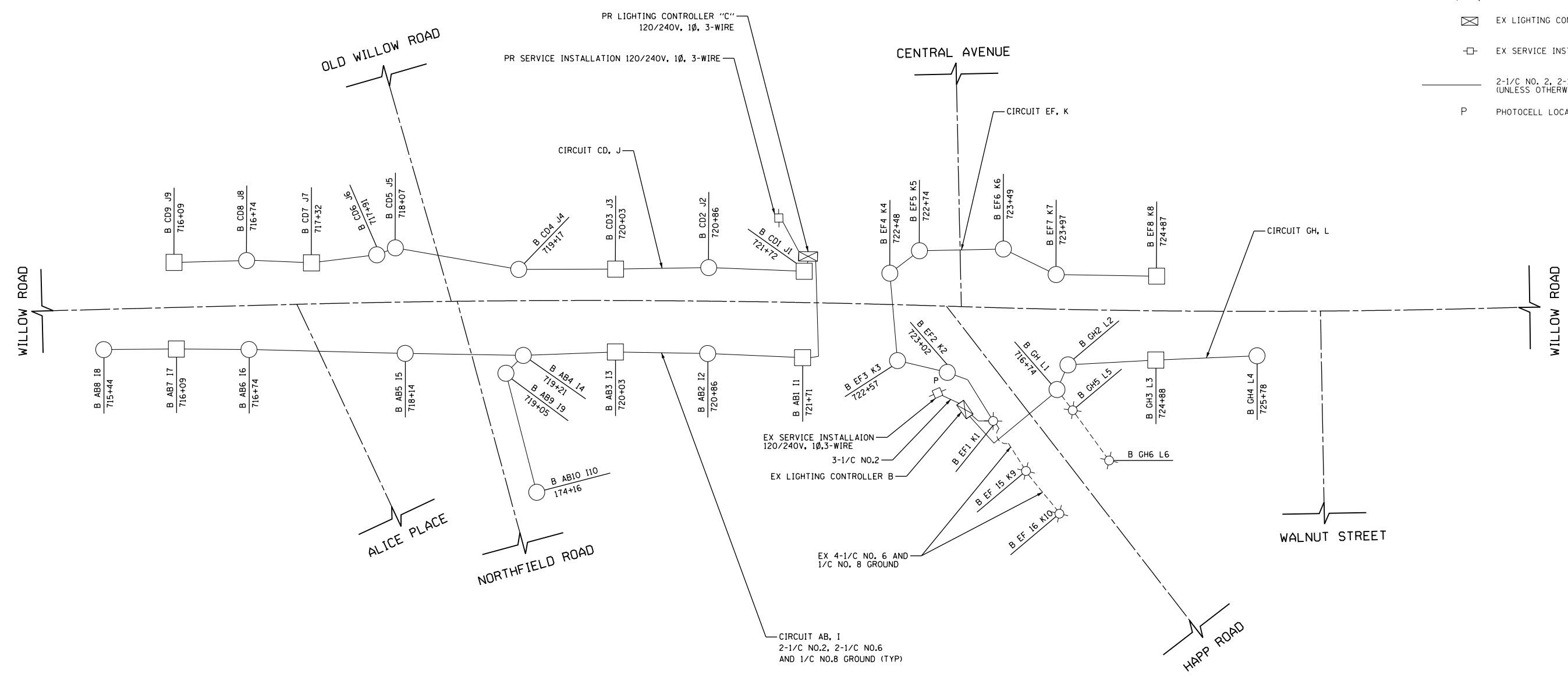




LEGEND

- LUMINAIRE, METAL HALIDE, 100W, ON RED/BLACK WIRE
- LUMINAIRE, METAL HALIDE, HORIZ. MOUNT, 250W, ON RED/BLACK WIRE
- EX LUMINAIRE, METAL HALIDE, 175W
- EX LIGHTING CONTROLLER, 120/240V, 1Ø, 3-WIRE
- EX SERVICE INSTALLATION, 120/240V, 1Ø, 3-WIRE
- 2-1/C NO. 2, 2-1/C NO. 6 AND 1/C NO. 8 GROUND (UNLESS OTHERWISE NOTED)
- PHOTOCCELL LOCATION



LOAD TABULATION					
CONTROLLER C					
LIGHTING UNIT			FESTOON OULET		
CIRCUIT	AMPS	WATTS	CIRCUIT	AMPS	WATTS
AB	9.43	2050	I	24.00	2000
CD	7.59	1650	J	21.60	1800
TOTAL	17.02	3700	TOTAL	45.60	3800

LOAD TABULATION					
CONTROLLER B					
LIGHTING UNIT			FESTOON OULET		
CIRCUIT	AMPS	WATTS	CIRCUIT	AMPS	WATTS
EF	8.74	1900	K	24.0	2000
GH	4.83	1050	L	14.4	1200
TOTAL	13.57	2950	TOTAL	38.4	3200

FILE NAME = G:\CH11\0158\Road\Road-CD\Lighting\DI6035-SHT-LIGHT-08.dgn
 USER NAME = BAW\ort
 DESIGNED - SRF
 DRAWN - AJP
 PLOT SCALE = 100.000 / in.
 PLOT DATE = 11/1/2012
 REVISED -
 REVISIONS -
 CHECKED - SRF
 DATE - 10/31/2012
 REVISED -

**STATE OF ILLINOIS
DEPARTMENT OF TRANSPORTATION**

**WIRING DIAGRAM
WILLOW ROAD (DOWNTOWN)**

SCALE: NONE SHEET NO. 431 OF 919 SHEETS

F.A.P. RTE.	SECTION	COUNTY	TOTAL SHEETS	SHEET NO.
305	(1920.01,1518,2022&1922.4B)R	COOK	919	431
FED. ROAD DIST. NO. 1 ILLINOIS FED. AID PROJECT			CONTRACT NO. 60T35	