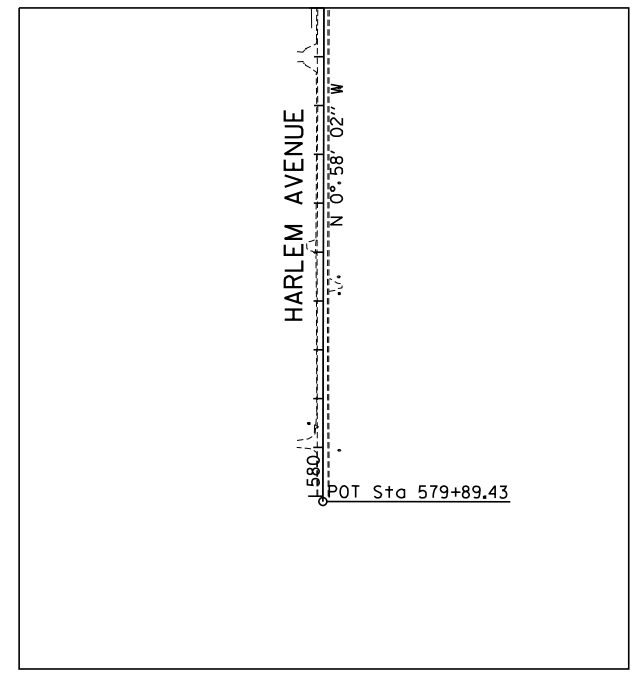
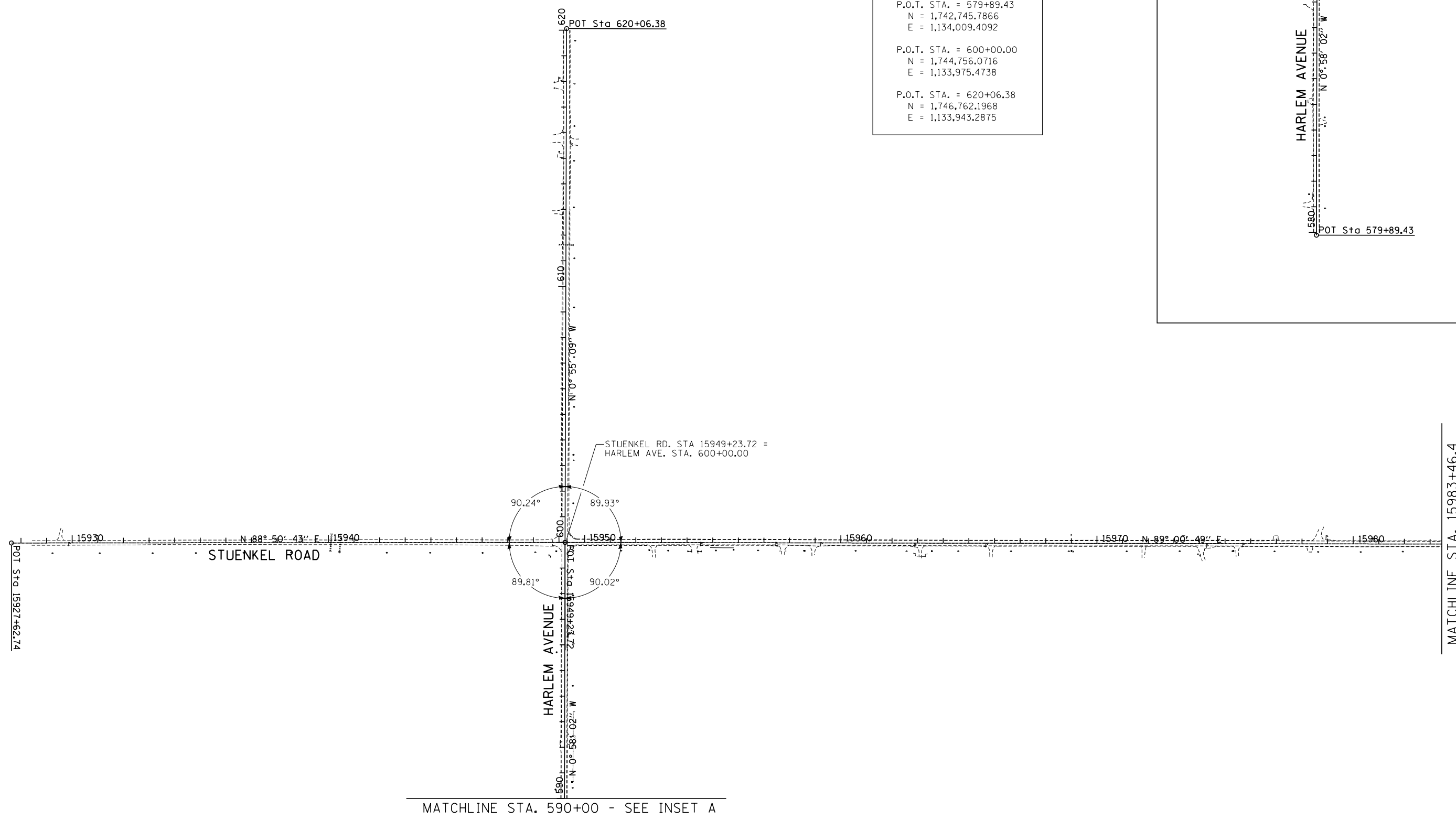




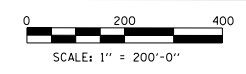
INSET A - MATCHLINE STA. 590+00



HARLEM AVE DATA	
P.O.T. STA. = 579+89.43	
N = 1,742,745.7866	
E = 1,134,009.4092	
P.O.T. STA. = 600+00.00	
N = 1,744,756.0716	
E = 1,133,975.4738	
P.O.T. STA. = 620+06.38	
N = 1,746,762.1968	
E = 1,133,943.2875	



NOTE: CONTRACT 60V41 USES THE FOLLOWING ALIGNMENTS:
STUENKEL RD AND HARLEM AVE ALL OTHER ALIGNMENTS
ARE FOR FUTURE CONTRACTS AND ARE SHOWN FOR
INFORMATION ONLY.



TYLIN INTERNATIONAL	USER NAME =	DESIGNED - MGD	REVISED -	STATE OF ILLINOIS DEPARTMENT OF TRANSPORTATION	STUENKEL ROAD AT I-57 (HARLEM AVENUE TO RIDGELAND AVENUE)		F.A.I. RTE.	SECTION	COUNTY	TOTAL SHEETS	SHEET NO.
	PLOT SCALE =	DRAWN - MGD	REVISED -		57	2012-048R	WILL	206	13		
	PLOT DATE =	CHECKED - JPM	REVISED -		ALIGNMENT PLANS		CONTRACT NO. 60V41				
	DATE - 9/19/2012	REVISIED - 11/2/2012		SCALE: 1" = 200'	SHEET 1 OF 2 SHEETS	STA. 15927+62.74 TO STA. 15983+46.40	ILLINOIS FED. AID PROJECT				