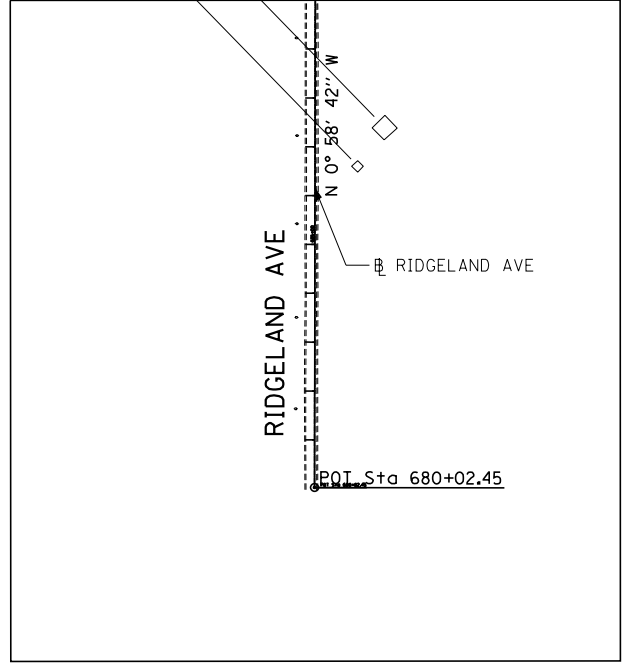




INSET B - MATCHLINE STA. 690+00



**STUENKEL RD DATA**

P.O.T. STA. = 15927+62.74  
N = 1,744,712.5234  
E = 1,131,814.9301

P.O.T. STA. = 15949+23.72  
N = 1,744,756.0716  
E = 1,133,975.4738

P.O.T. STA. = 15993+45.85  
N = 1,744,832.1982  
E = 1,138,396.9498

P.O.T. STA. = 16003+46.49  
N = 1,744,852.1819  
E = 1,139,397.3874

P.O.T. STA. = 16021+50.00  
N = 1,744,886.2104  
E = 1,141,200.5730

P.O.T. STA. = 16039+00.00  
N = 1,744,919.2294  
E = 1,142,950.2615

P.O.T. STA. = 16056+32.31  
N = 1,744,951.9146  
E = 1,144,682.2614

P.O.T. STA. = 16099+21.56  
N = 1,745,029.4382  
E = 1,148,970.8158

**I-57 DATA**

PROP. CURVE EXCL57-1  
EXIST. CURVE MA111-1  
PI STA. = 1458+10.02  
N = 1,745,198.5034  
E = 1,142,062.1467  
 $\Delta = 14^\circ 07' 38''$  (RT)  
D =  $0^\circ 29' 59''$   
R = 11,467.92'  
T = 1,421.02'  
L = 2,827.62'  
E = 87.71'  
e = ----  
T.R. = ----  
S.E. RUN = ----  
P.C. STA. = 1443+89.00  
N = 1,743,778.5775  
E = 1,142,006.4196  
P.T. STA. = 1472+16.63  
N = 1,746,561.8830  
E = 1,142,462.7602

**RIDGELAND AVE DATA**

P.O.T. STA. = 680+02.45  
N = 1,742,854.9219  
E = 1,139,431.4980

P.O.T. STA. = 700+00.00  
N = 1,744,852.1819  
E = 1,139,397.3874

P.O.T. STA. = 720+16.29  
N = 1,746,868.1542  
E = 1,139,361.8510

MATCHLINE STA. 15983+46.4

RIDGELAND AVE

POT Sta 720+16.29

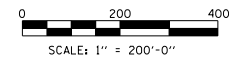
RIDGELAND AVE

STUENKEL RD

RECONSTRUCTION LIMIT  
STA. 16002+00

MATCHLINE STA. 690+00 - SEE INSET B

NOTE: CONTRACT 60V41 USES THE FOLLOWING ALIGNMENTS;  
STUENKEL RD AND HARLEM AVE ALL OTHER ALIGNMENTS  
ARE OR FUTURE CONTRACTS AND ARE SHOWN FOR  
INFORMATION ONLY.



<b>TYLIN INTERNATIONAL</b>	USER NAME =	DESIGNED - BES	REVISED -
	PLOT SCALE =	DRAWN - BES	REVISED -
	PLOT DATE =	CHECKED - JPM	REVISED -
		DATE - 9/19/2012	REVISED - 11/2/2012

**STATE OF ILLINOIS  
DEPARTMENT OF TRANSPORTATION**

**STUENKEL ROAD AT I-57 (HARLEM AVENUE TO RIDGELAND AVENUE)  
ALIGNMENT PLAN**

SCALE: 1" = 200' SHEET 2 OF 2 SHEETS STA. TO STA.

F.A.I. RTE.	SECTION	COUNTY	TOTAL SHEETS	SHEET NO.
57	2012-048R	WILL	206	14
CONTRACT NO. 60V41			ILLINOIS FED. AID PROJECT	