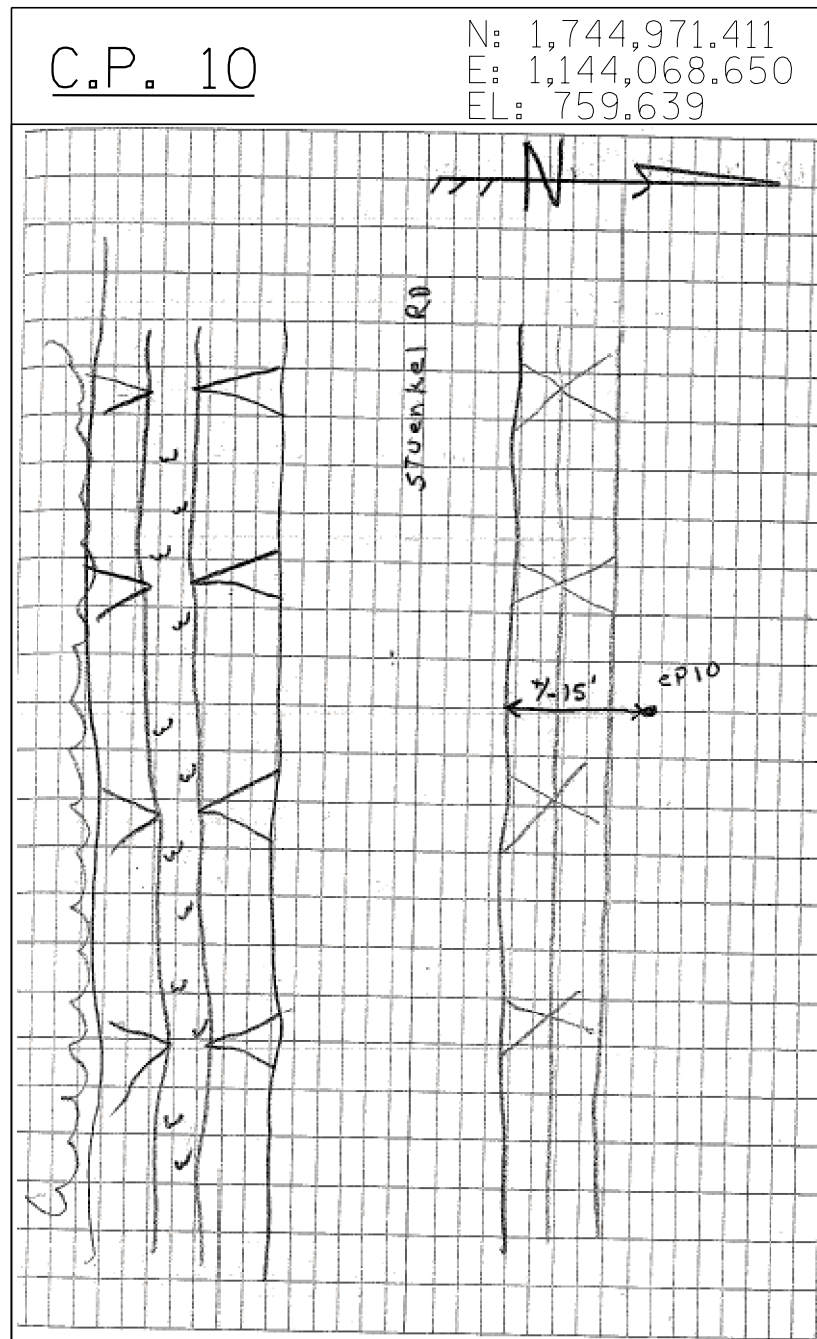
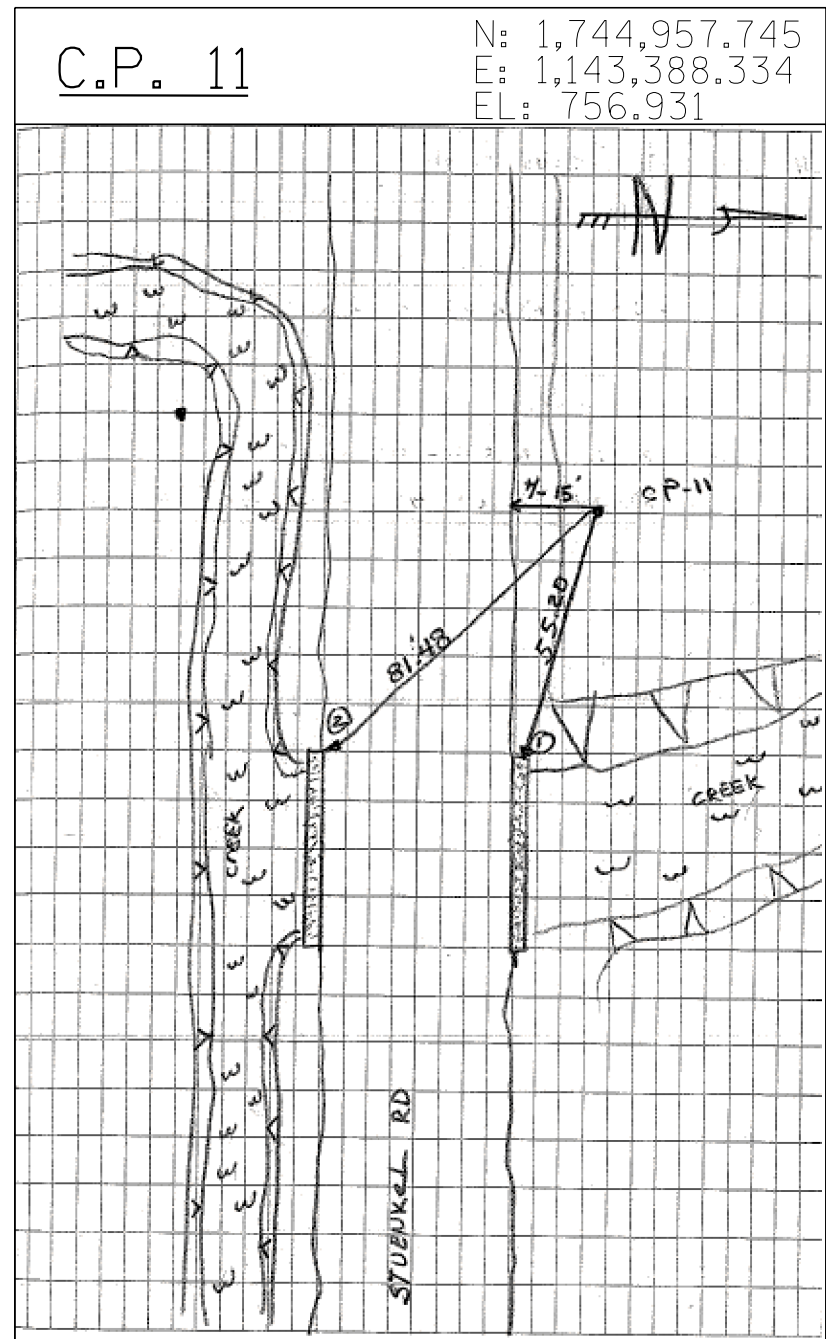


CPT 1 BRASS MON (SECTION COR)
TIE 1 NW FACE OF STREET LIGHT @ SEX.
STUENKEL & CENTRAL



CPT 10 IR W/ CENTER PUNCH
UNTIEABLE
+/- 500 WEST OF CP1
+/- 15' NORTH OF GRAVEL RD EDGE



CPT 11 IR W/ CENTER PUNCH
+/- 15' NORTH OF EDGE OF GRAVEL RD.
TIE 1: 55.20 NWX OF HEAD WALL
ON N. SIDE OF STUENKEL RD
TIE 2: 81.48 NWX OF HEAD WALL
ON S. SIDE OF STUENKEL RD

TYLIN INTERNATIONAL	USER NAME =	DESIGNED - BES	REVISED -
	PLOT SCALE =	DRAWN - BES	REVISED -
	PLOT DATE =	CHECKED - JPM	REVISED -
	DATE - 9/19/2012	REVISED - 11/2/2012	

**STATE OF ILLINOIS
DEPARTMENT OF TRANSPORTATION**

**STUENKEL ROAD AT I-57 (HARLEM AVENUE TO RIDGELAND AVENUE)
SURVEY TIES FOR CONTROL POINTS**

SCALE: N.T.S. SHEET 1 OF 5 SHEETS STA. TO STA.

F.A.I. RTE.	SECTION	COUNTY	TOTAL SHEETS	SHEET NO.
57	2012-048R	WILL	206	15
CONTRACT NO. 60V41				
ILLINOIS FED. AID PROJECT				