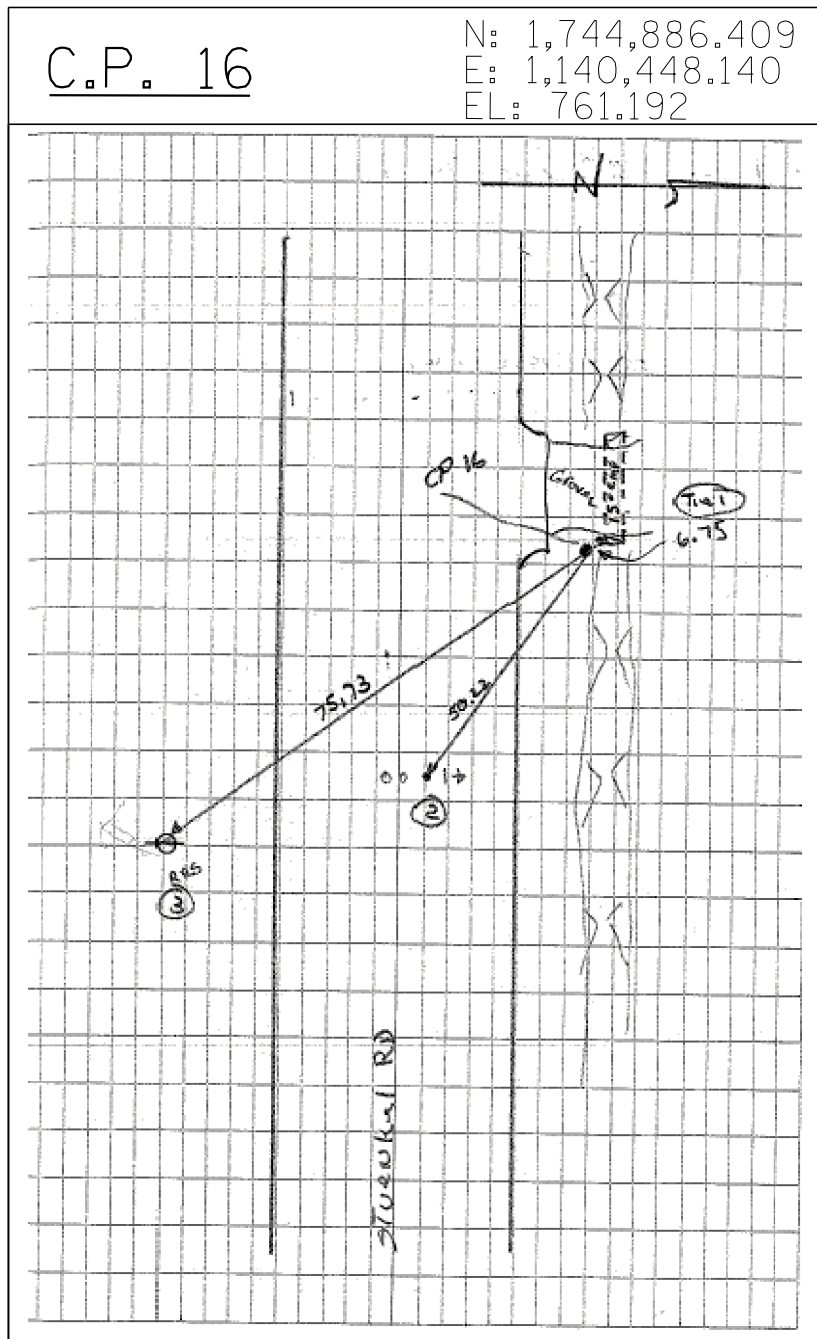
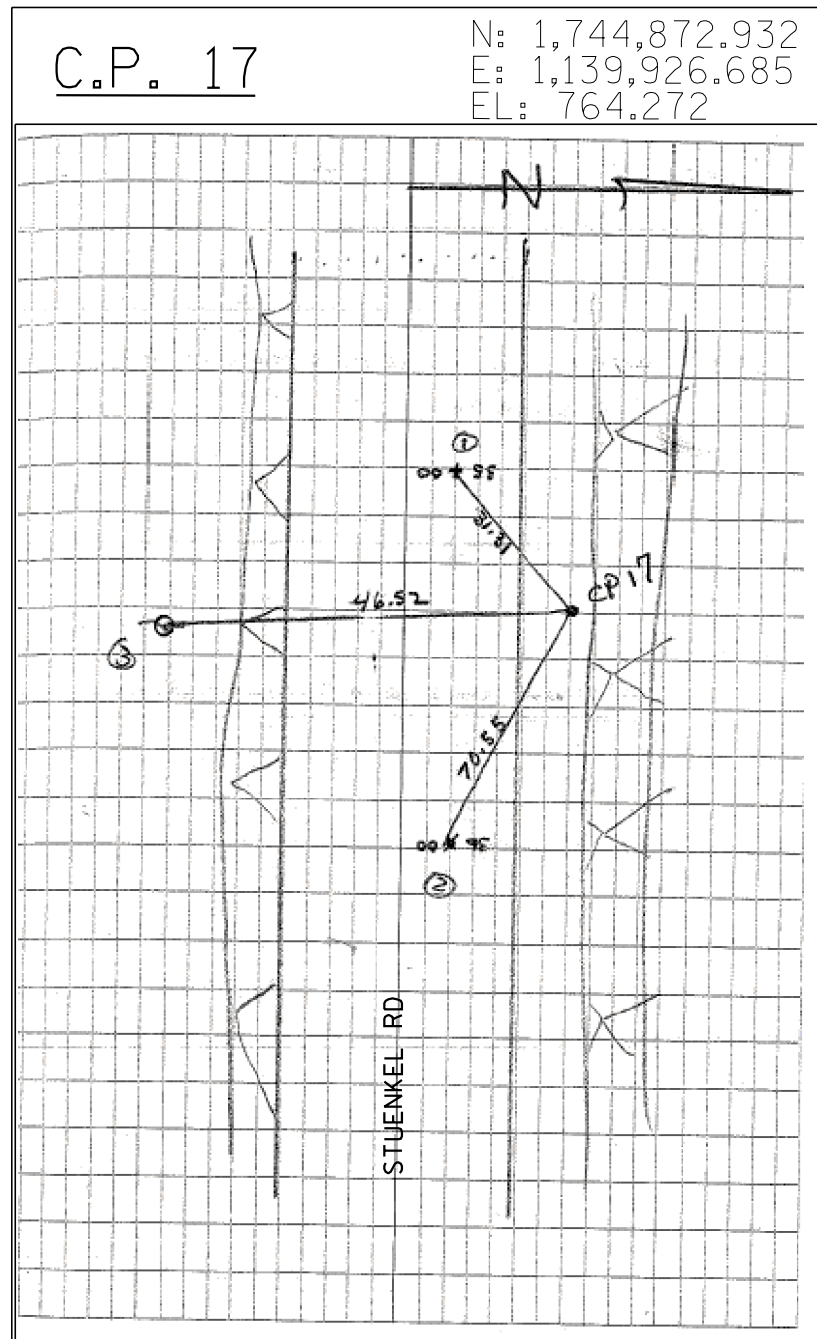


CPT 15 MAG NAIL IN CENTER OF ARCH PANEL  
 TIE 1 N.E. FACE OF W. GATE POST ON S. SIDE STUENKEL RD (45.63)  
 TIE 2 34.46 MAG NAIL IN  $\phi$  OF STUENKEL RD E. OF GRAVEL DR  
 TIE 3 30.73 W. FACE OF PP E. SIDE OF GRAVEL DR (5TH PP W OF I-57)



CPT 16 IR W/ CENTER PUNCH  
 TIE 1 6.75 W. END OF 15" CMP ON N. SIDE OF STUENKEL RD  
 TIE 2 50.22 TO MAG NAIL STA BY OTHERS 41+00 N. SIDE OF  $\phi$  STUENKEL RD  
 TIE 3 75.73 TO RRS IN N. FACE OF PP ON S. SIDE OF STUENKEL RD



CPT 17 IR W/ CENTER PUNCH  
 TIE 1 MAG NAIL IN W. BOUND LANE OF STUENKEL RD STA. 35+00 BY OTHERS  
 TIE 2 MAG NAIL IN W. BOUND LANE OF STUENKEL RD STA. 36+00 BY OTHERS  
 TIE 3 RRS IN N. FACE OF 3 PP W. OF RIDGELAND

TYLIN INTERNATIONAL	USER NAME =	DESIGNED - BES	REVISED -
	PLOT SCALE =	DRAWN - BES	REVISED -
	PLOT DATE =	CHECKED - JPM	REVISED -
		DATE - 9/19/2012	REVISED - 11/2/2012

**STATE OF ILLINOIS  
DEPARTMENT OF TRANSPORTATION**

**STUENKEL ROAD AT I-57 (HARLEM AVENUE TO RIDGELAND AVENUE)  
SURVEY TIES FOR CONTROL POINTS**

SCALE: N.T.S. SHEET 3 OF 5 SHEETS STA. TO STA.

F.A.I. RTE.	SECTION	COUNTY	TOTAL SHEETS	SHEET NO.
57	2012-048R	WILL	206	17
ILLINOIS FED. AID PROJECT				CONTRACT NO. 60V41