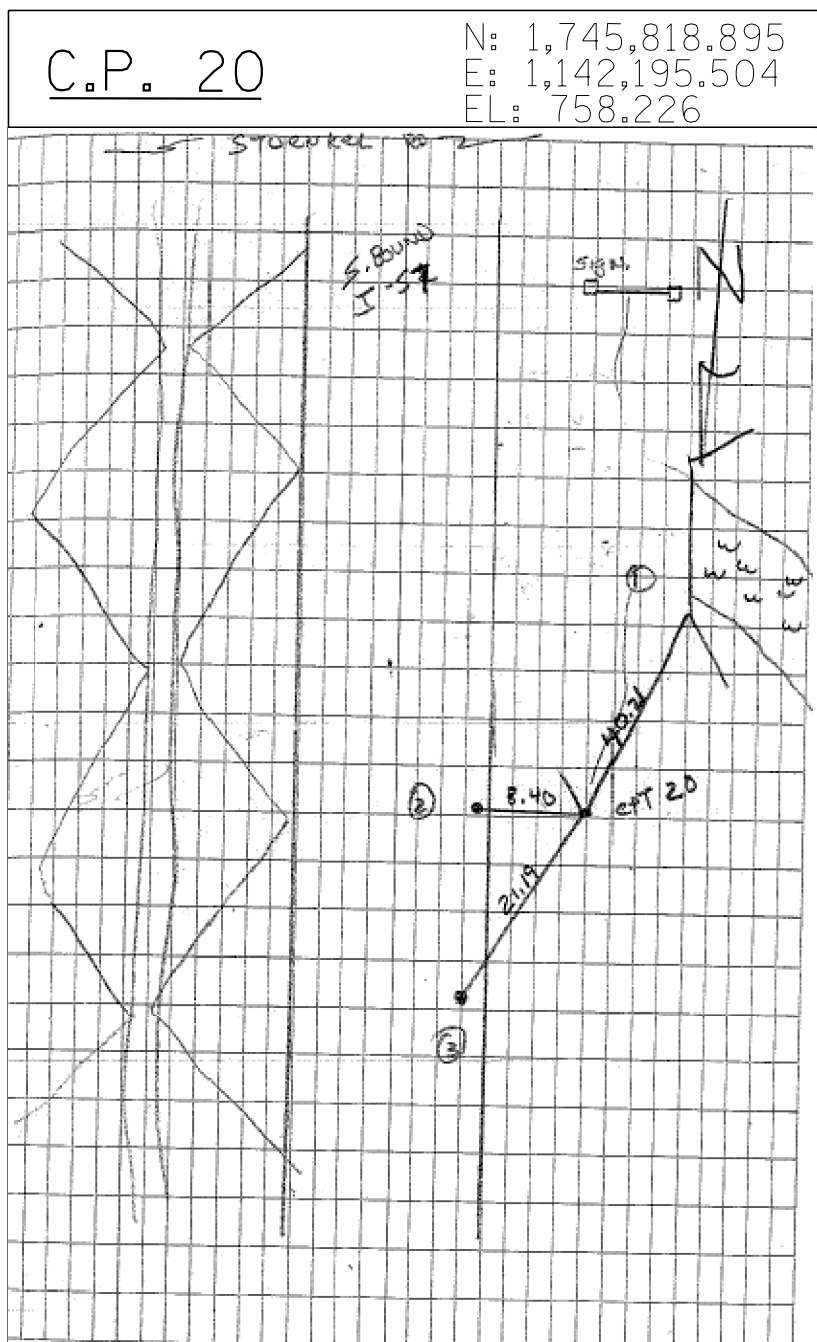


CPT 3 RRS 0.60 BELOW PAV. @ STUENKEL & RIDGELAND

TIE 1 47.04 PK NAIL @ PC @ SEX OF RIDGELAND & STUENKEL RD

TIE 2 45.36 TO RRS IN W. FACE OF PP @ SWX RIDGELAND & STUENKEL RD

TIE 3 MAG NAIL 5.20 N. OF RRS

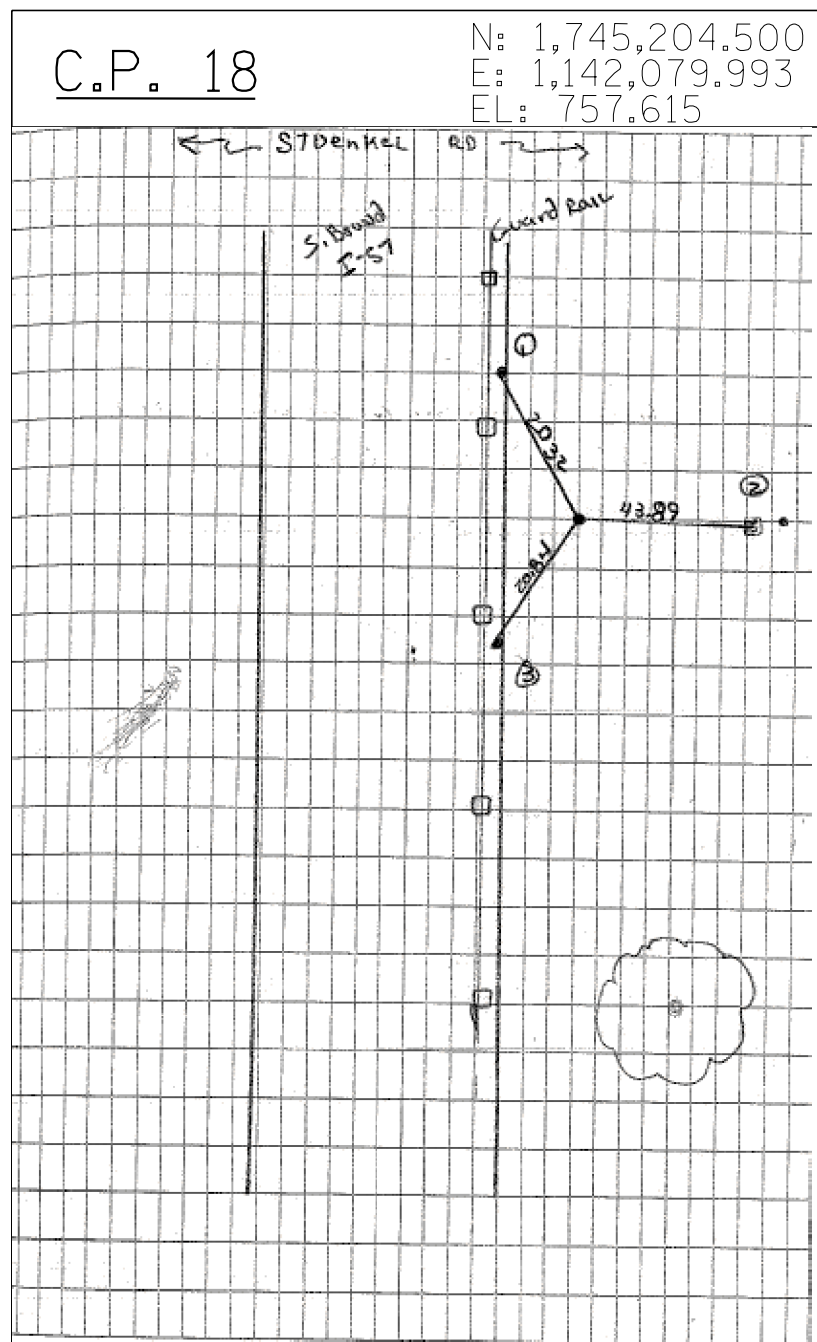


CPT 20 IRC

TIE 1 NEX OF HEAD WALL ON W. SIDE OF S. BOUND LANE OF I-57 (40.21)

TIE 2 8.40 PK NAIL E ON W EDGE OF S. BOUND LANE

TIE 3 21.19 PK NAIL ON W. EDGE OF S. BOUND LANE



CPT 18 IR W/ CENTER PUNCH

TIE 1 20.32 MAG NAIL W. EDGE OF PAV. W. SIDE OF GUARD RAIL S. BOUND LANE OF I-57 N. OF STUENKEL RD

TIE 2 43.89 TOP CENTER OF CONE ROW MARKER

TIE 3 20.84 MAG NAIL W. EDGE OF PAV. W. SIDE OF GUARD RAIL S. BOUND LANE.

TYLIN INTERNATIONAL

USER NAME =	DESIGNED - BES	REVISED -
PLOT SCALE =	DRAWN - BES	REVISED -
PLOT DATE =	CHECKED - JPM	REVISED -
	DATE - 9/19/2012	REVISED - 11/2/2012

STATE OF ILLINOIS  
DEPARTMENT OF TRANSPORTATION

STUENKEL ROAD AT I-57 (HARLEM AVENUE TO RIDGELAND AVENUE)  
SURVEY TIES FOR CONTROL POINTS

SCALE: N.T.S. SHEET 4 OF 5 SHEETS STA. TO STA.

F.A.I. RTE.	SECTION	COUNTY	TOTAL SHEETS	SHEET NO.
57	2012-048R	WILL	206	18
CONTRACT NO. 60V41				
ILLINOIS FED. AID PROJECT				