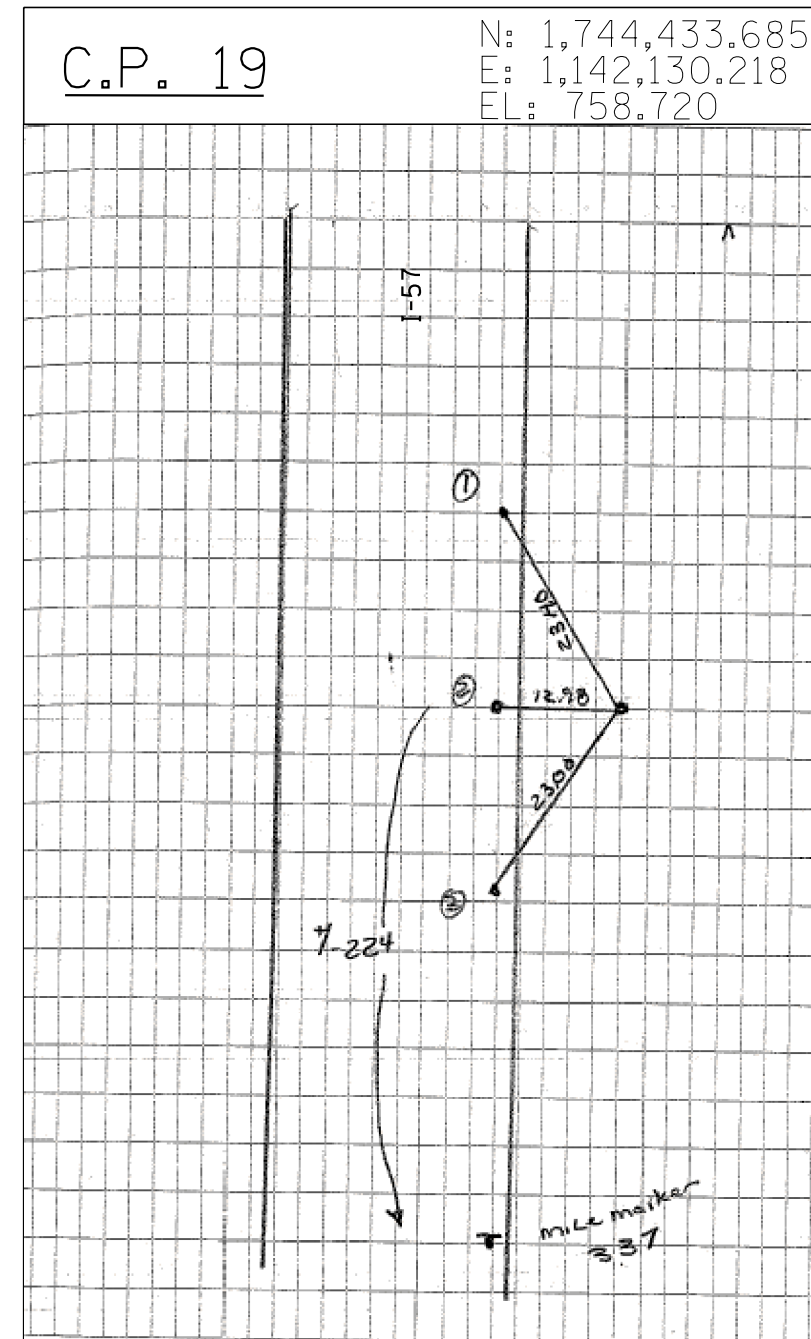


CPT 21 IRC +/- 275 S. OF MILE MARKER 337
ON E. SIDE N. BOUND LANES I-57

TIE 1 21.51 PK NAIL N. ON EDGE OF PAV.
N. BOUND LANES I-57

TIE 2 6.75 W. PK NAIL N. EDGE OF PAV.
N. BOUND LANES I-57

TIE 3 21.28 PK NAIL. N. ON EDGE OF
PAV. N. BOUND LANES I-57



CPT 19 IR W/ CENTER PUNCH +/- 224 N OF MILE MARKER
337

TIE 1 2340 PK

TIE 2 12.98 PK

TIE 3 23.00 PK

TYLIN INTERNATIONAL

USER NAME =	DESIGNED - BES	REVISED -
PLOT SCALE =	DRAWN - BES	REVISED -
PLOT DATE =	CHECKED - JPM	REVISED -
	DATE - 9/19/2012	REVISED - 11/2/2012

**STATE OF ILLINOIS
DEPARTMENT OF TRANSPORTATION**

**STUENKEL ROAD AT I-57 (HARLEM AVENUE TO RIDGELAND AVENUE)
SURVEY TIES FOR CONTROL POINTS**

SCALE: N.T.S. SHEET 5 OF 5 SHEETS STA. TO STA.

F.A.I. RTE.	SECTION	COUNTY	TOTAL SHEETS	SHEET NO.
57	2012-048R	WILL	206	19
				CONTRACT NO. 60V41
ILLINOIS FED. AID PROJECT				