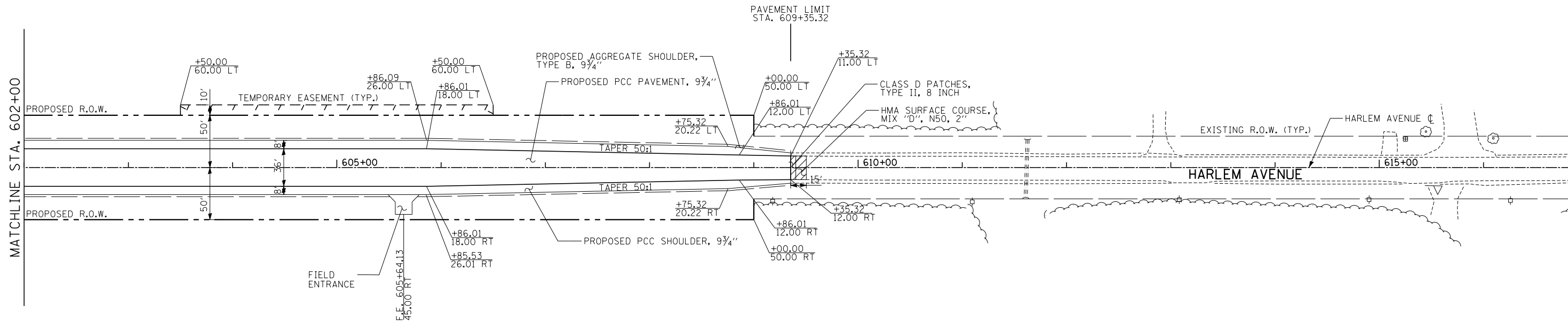


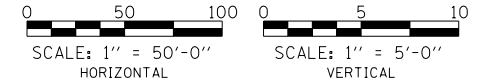


DATE	
BY	
PLAN	
SURVEYED	
ALIGNMENT CHECKED	
RT. OF WAY CHECKED	
NOTE BOOK NO.	
CADD FILE NAME	

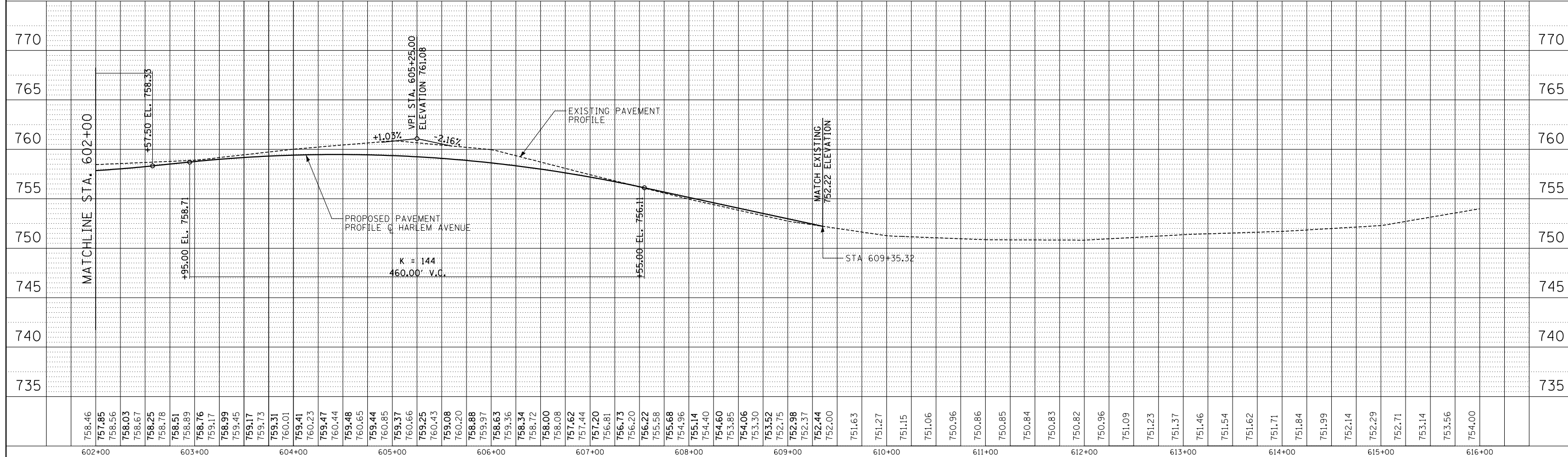


NOTES:

1. FOR DRIVEWAY DETAILS SEE SCHEDULE OF QUANTITIES
2. EXISTING ROW LINEWORK HAS BEEN OMITTED FOR CLARITY



DATE	
BY	
PROFILE	
SURVEYED	
GRADES CHECKED	
B.M. NOTED	
STRUCTURE NOTATIONS CHKD	
NOTE BOOK NO.	



TYLIN INTERNATIONAL

USER NAME =	DESIGNED - DPS	REVISED -
PLOT SCALE =	DRAWN - DPS	REVISED -
PLOT DATE =	CHECKED - JPM	REVISED -
	DATE - 9/19/2012	REVISED - 11/2/2012

**STATE OF ILLINOIS
DEPARTMENT OF TRANSPORTATION**

**STUENKEL ROAD AT I-57 (HARLEM AVENUE TO RIDGELAND AVENUE)
HARLEM AVENUE PROPOSED PLAN AND PROFILE**

SCALE: 1" = 50' SHEET 7 OF 7 SHEETS STA. 602+00 TO STA. 609+35

F.A.I. RTE.	SECTION	COUNTY	TOTAL SHEETS	SHEET NO.
57	2012-048R	WILL	206	38
CONTRACT NO. 60V41			ILLINOIS FED. AID PROJECT	