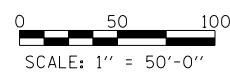
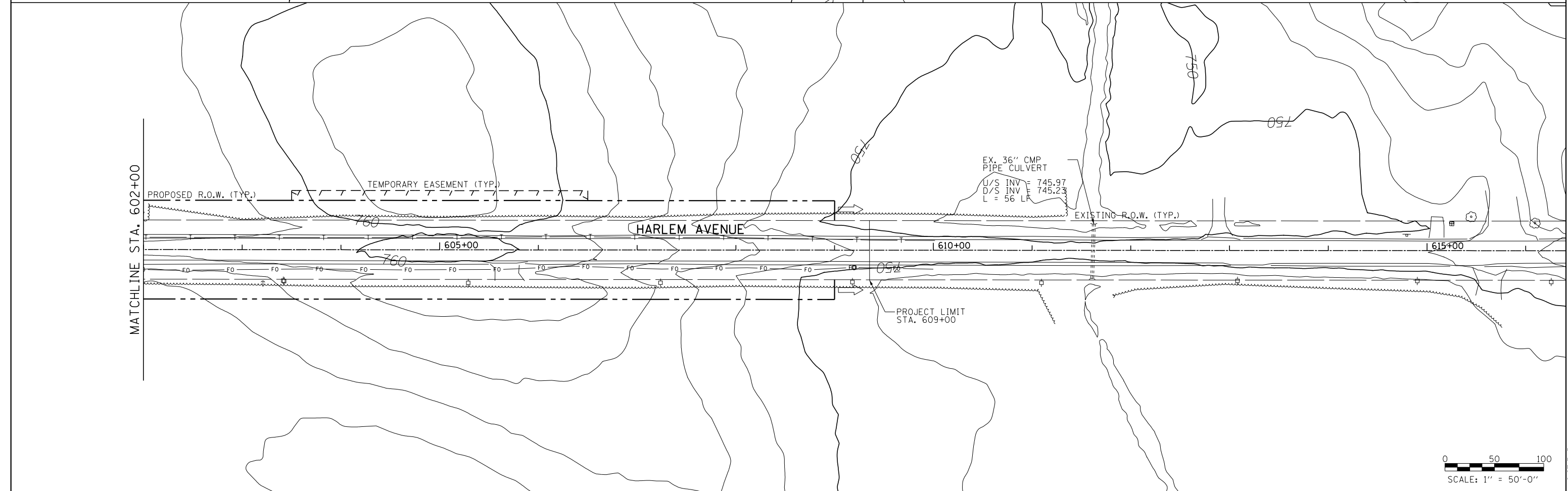
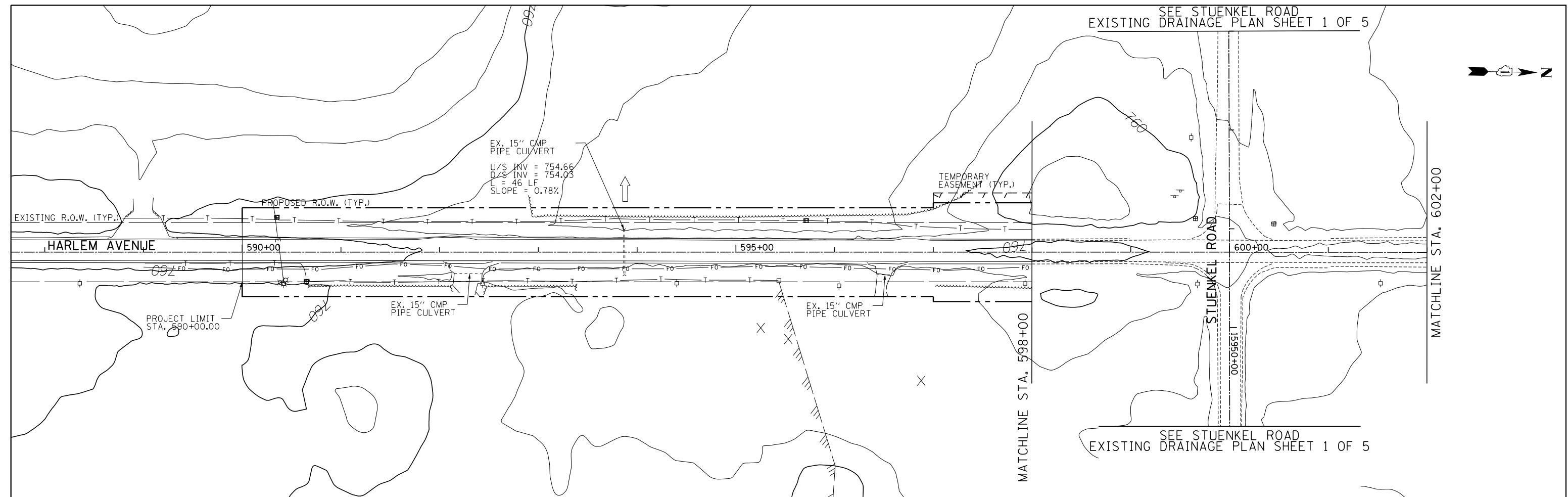


SEE STUENKEL ROAD  
EXISTING DRAINAGE PLAN SHEET 1 OF 5



<b>TYLIN INTERNATIONAL</b>	USER NAME =	DESIGNED - PP	REVISED -	<b>STATE OF ILLINOIS DEPARTMENT OF TRANSPORTATION</b>	<b>STUENKEL ROAD AT I-57 (HARLEM AVENUE TO RIDGELAND AVENUE) HARLEM AVENUE EXISTING DRAINAGE PLAN</b>		F.A. RTE.	SECTION	COUNTY	TOTAL SHEETS	SHEET NO.
	PLOT SCALE =	DRAWN - PP	REVISED -				57	2012-048R	WILL	206	64
	PLOT DATE =	CHECKED - JPM	REVISED -				CONTRACT NO. 60V41				
	DATE - 9/19/2012	REVISD - 11/2/2012		SCALE: 1" = 50'		SHEET 4 OF 4 SHEETS	STA. 590+00 TO STA. 609+00	ILLINOIS FED. AID PROJECT			