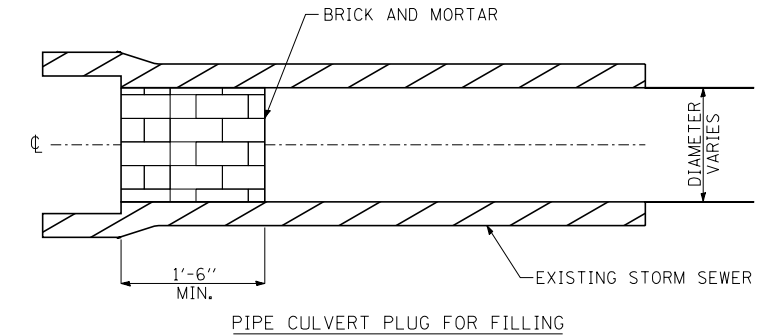
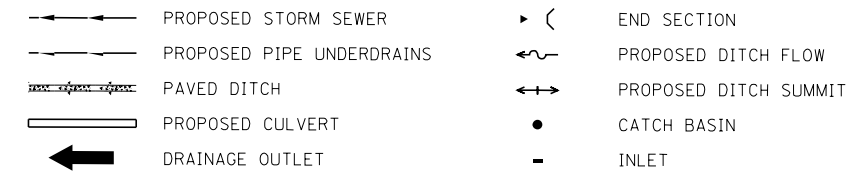


PIPE UNDERDRAIN SCHEDULE

ID NUMBER	FROM		TO		DIA. (IN)	LENGTH (FT)	LENGTH SPECIAL (FT)
	STATION	OFFSET	STATION	OFFSET			
<b>STUENKEL ROAD</b>							
PUD101	15941+46.23	13.62 LT	15947+50.00	19.50 LT	6	604	
PUD102	15941+46.22	10.07 RT	15947+50.00	19.50 RT	6	604	
PUD103	15947+50.00	19.50 LT	15947+50.00	19.50 RT	8	64	
PUD104 <sup>1</sup>	15947+50.00	19.50 RT	15947+50.00	37.17 RT	8		18
PUD105	15948+90.61	43.38 LT	15947+50.00	19.50 LT	6	144	
PUD106	15948+87.53	47.35 RT	15947+50.00	19.50 RT	6	150	
PUD107	15949+65.63	47.40 LT	15950+89.54	31.50 LT	6	129	
PUD108	15949+57.53	43.03 RT	15950+89.69	19.50 RT	6	136	
PUD109	15954+45.00	19.80 LT	15950+98.77	31.50 LT	6	347	
PUD110	15955+45.00	15.57 RT	15950+98.92	19.50 RT	6	446	
PUD301 <sup>1</sup>	15954+50.00	17.80 LT	15954+50.00	33.97 LT	6		18
PUD302 <sup>1</sup>	15955+50.00	15.57 RT	15955+50.00	30.62 RT	6		15
PUD303	15957+47.50	13.50 LT	15954+50.00	17.80 LT	6	298	
PUD304	15957+47.50	13.50 RT	15955+50.00	15.57 RT	6	198	
PUD305	15957+52.50	13.50 LT	15963+36.65	13.50 LT	6	584	
PUD306	15957+52.50	13.50 RT	15963+36.65	13.50 RT	6	584	
PUD307	15968+77.50	13.50 LT	15963+40.81	13.50 LT	6	537	
PUD308	15968+77.50	13.50 RT	15963+40.81	13.50 RT	6	537	
PUD401	15968+82.50	13.50 LT	15970+92.92	13.50 LT	6	210	
PUD402	15968+82.50	13.50 RT	15970+92.92	13.50 RT	6	210	
PUD403	15976+77.50	13.50 LT	15970+97.08	13.50 LT	6	580	
PUD404	15976+77.50	13.50 RT	15970+97.08	13.50 RT	6	580	
PUD405	15976+82.50	13.50 LT	15981+50.00	13.50 LT	6	468	
PUD406	15976+82.50	13.50 RT	15981+50.00	13.50 RT	6	468	
PUD407	15981+50.00	13.50 LT	15981+50.00	13.50 RT	8	27	
PUD408 <sup>1</sup>	15981+50.00	13.50 RT	15981+50.00	32.70 RT	8		19
PUD501	15981+52.50	13.50 LT	15984+86.85	13.50 LT	6	334	
PUD502	15981+52.50	13.50 RT	15984+86.85	13.50 RT	6	334	
PUD503	15987+47.50	17.74 LT	15984+91.00	13.50 LT	6	257	
PUD504	15987+47.50	17.74 RT	15984+91.00	13.50 RT	6	257	
PUD505 <sup>1</sup>	15987+52.50	17.88 LT	15987+52.50	40.33 LT	8		20
PUD506	15987+52.50	17.88 RT	15987+52.50	17.88 LT	8	36	
PUD507	15992+45.00	28.91 LT	15987+52.50	17.88 LT	6	493	
PUD508	15992+45.00	28.91 RT	15987+52.50	17.88 RT	6	493	
PUD509 <sup>1</sup>	15992+50.00	28.91 LT	15992+50.00	52.90 LT	8		24
PUD510	15992+50.00	28.91 RT	15992+50.00	28.91 LT	8	58	
PUD511	15997+57.70	40.19 LT	15992+50.00	28.91 LT	6	508	
PUD512	15997+57.42	40.18 RT	15992+50.00	28.91 RT	6	508	
PUD601	15997+62.70	40.50 LT	16001+95.00	40.50 LT	6	432	
PUD602	15997+62.48	40.50 RT	16001+95.00	40.50 RT	6	433	
PUD603 <sup>1</sup>	16001+95.00	40.50 LT	16001+95.00	62.11 LT	6		22
PUD604 <sup>1</sup>	16001+95.00	40.50 RT	16001+95.00	59.09 RT	6		19
<b>HARLEM AVENUE</b>							
PUD701	590+00.00	9.83 RT	593+82.87	18.88 RT	6	383	
PUD702	590+00.00	14.39 LT	593+82.97	18.88 LT	6	383	
PUD703	597+22.50	19.50 RT	593+92.43	19.07 RT	6	330	
PUD704	597+22.50	19.50 LT	593+92.43	19.07 LT	6	330	
PUD705	597+27.50	19.50 RT	599+54.48	31.02 RT	6	230	
PUD706	597+27.50	19.50 LT	599+50.00	35.39 LT	6	224	
PUD707 <sup>1</sup>	599+54.48	31.02 RT	599+54.51	41.36 RT	6		10
PUD708 <sup>1</sup>	599+50.00	31.02 LT	599+50.00	44.00 LT	6		9
PUD709 <sup>1</sup>	600+50.00	40.19 RT	600+50.00	53.86 RT	6		14
PUD710 <sup>1</sup>	600+45.75	30.56 LT	600+45.71	41.05 LT	6		10
PUD711	604+47.50	19.50 RT	600+50.00	40.19 RT	6	401	
PUD712	604+47.50	19.50 LT	600+45.71	41.05 LT	6	405	
PUD901	604+52.50	19.50 RT	608+50.00	14.22 RT	6	397	
PUD902	604+52.50	19.50 LT	608+50.00	14.22 LT	6	398	
PUD903 <sup>1</sup>	608+50.00	14.22 RT	608+50.00	27.57 RT	8		13
PUD904	608+50.00	14.22 LT	608+50.00	14.22 RT	8	28	

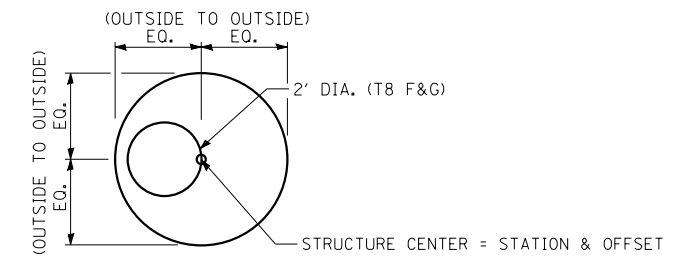
<sup>1</sup>INDICATES PIPE UNDERDRAIN SPECIAL  
<sup>2</sup>INDICATES STUENKEL ROAD STATIONING AND/OR OFFSET

**PROPOSED DRAINAGE LEGEND:**



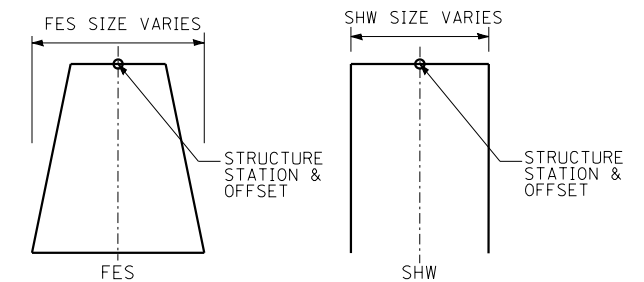
**NOTES:**

- THIS WORK CONSISTS OF FURNISHING BRICKS AND MORTAR AS SHOWN AND AS DIRECTED BY THE ENGINEER AT LOCATIONS SHOWN IN THE PLANS TO FILL EXISTING PIPE CULVERTS WITH CONTROLLED LOW STRENGTH MATERIAL (CLSM).
- ALL ABANDONED PIPE CULVERTS WITHIN IDOT RIGHT-OF-WAY, AS INDICATED ON PLANS, SHALL BE FILLED WITH CLSM AS PER SPECIFICATIONS WITH BOTH ENDS PLUGGED.
- THIS WORK SHALL BE INCLUDED IN THE COST OF PIPE FILLING WITH CLSM AND SHALL NOT BE PAID FOR SEPARATELY.



CATCH BASIN

CATCH BASIN STATIONS AND OFFSETS ARE MEASURED TO CENTER OF STRUCTURE



FLARED END SECTION (FES) AND SLOPED HEADWALL (SHW), FOR PIPE UNDERDRAINS, STATIONS AND OFFSETS ARE LOCATED AS SHOWN.

**TYLIN** INTERNATIONAL

USER NAME =	DESIGNED - PP	REVISED -
PLOT SCALE =	DRAWN - PP	REVISED -
PLOT DATE =	CHECKED - JPM	REVISED -
	DATE - 9/19/2012	REVISED - 11/2/2012

**STATE OF ILLINOIS  
DEPARTMENT OF TRANSPORTATION**

**STUENKEL ROAD AT I-57 (HARLEM AVENUE TO RIDGELAND AVENUE)  
DRAINAGE AND UTILITY SCHEDULE**

SCALE: N.T.S. SHEET 3 OF 3 SHEETS STA. TO STA.

F.A.I. RTE.	SECTION	COUNTY	TOTAL SHEETS	SHEET NO.
57	2012-048R	WILL	206	76
CONTRACT NO. 60V41				
ILLINOIS FED. AID PROJECT				