

STATE OF ILLINOIS  
 DEPARTMENT OF TRANSPORTATION  
 DIVISION OF HIGHWAYS

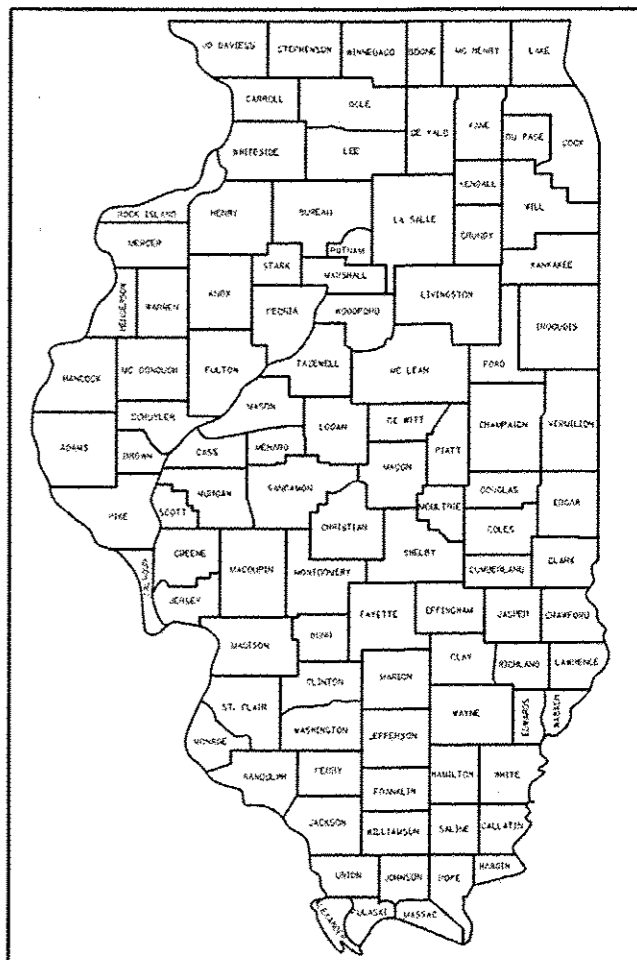
PLANS FOR PROPOSED  
 FEDERAL AID HIGHWAY

VARIOUS LOCATIONS IN WILL COUNTY  
 LIGHT EMITTING DIODE (LED) INSTALLATION  
 SECTION 2012-067 I  
 WILL COUNTY  
 C-91-064-13

F.A.P. RTE.	SECTION	COUNTY	TOTAL SHEETS	SHEET NO.
	2012-067 I	WILL	39	1
		ILLINOIS	CONTRACT NO. 60V74	

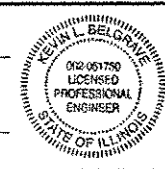
\* 39 + 1 = 40

D-91-064-13



LOCATION OF SECTION INDICATED THUS: —■—

SIGNED: Kevin L. Belgrave  
 KEVIN L. BELGRAVE, EXP. 11/30/2013  
 DATE: OCTOBER 15, 2012



STATE OF ILLINOIS  
 DEPARTMENT OF TRANSPORTATION  
 DIVISION OF HIGHWAYS

SUBMITTED Oct 19 2012  
John D. Baranzelli  
 DEPUTY DIRECTOR OF HIGHWAYS, REGION ENGINEER

Dec 7 2012  
John D. Baranzelli, PE  
 ENGINEER OF DESIGN AND ENVIRONMENT

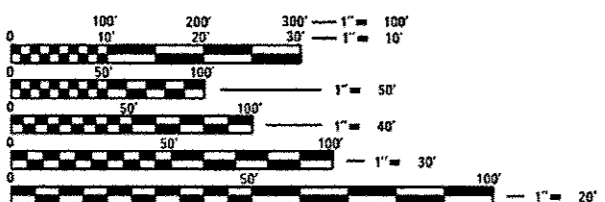
Dec 7 2012  
William R. Frey  
 acting DIRECTOR OF HIGHWAYS, CHIEF ENGINEER

PRINTED BY THE AUTHORITY  
 OF THE STATE OF ILLINOIS

FOR INDEX OF SHEETS, SEE SHEET NO. 2

HIGHWAY STANDARDS

- 701006-04 OFF-ROAD OPERATIONS 2L, 2W, 15' (4.5 m) TO 24" (600 mm) FROM PAVEMENT EDGE
- 701101-03 OFF-ROAD OPERATIONS MULTILANE, 15' (4.5 m) TO 24" (600 mm) FROM PAVEMENT EDGE
- 701701-00 URBAN LNE CLOSURE MULTILANE INTERSECTION
- 701901-03 TRAFFIC CONTROL DEVICES
- 857001-01 STANDARD PHASE DESIGNATION DIAGRAMS AND PHASE SEQUENCES
- 862001-01 UNINTERRUPTABLE POWER SUPPLY (UPS)
- 880006-01 TRAFFIC SIGNAL MOUNTING DETAILS



FULL SIZE PLANS HAVE BEEN PREPARED USING STANDARD ENGINEERING SCALES. REDUCED SIZED PLANS WILL NOT CONFORM TO STANDARD SCALES. IN MAKING MEASUREMENTS ON REDUCED PLANS, THE ABOVE SCALES MAY BE USED.

J.U.L.I.E.  
 JOINT UTILITY LOCATION INFORMATION FOR EXCAVATION  
 1-800-892-0123  
 OR 811

WILL COUNTY  
 LOCATION MAP  
 SEE SHEET NO. 3

DISTRICT 1 - TRAFFIC SIGNAL DESIGN - SUDAD MAHQMUD (847) 705-4420

CONTRACT NO. 60V74

**GHA** GEWALT HAMILTON  
 ASSOCIATES, INC.  
 850 Forest Edge Drive • Vernon Hills, IL. 60061  
 847-478-9700  
 FAX: 847-478-9701