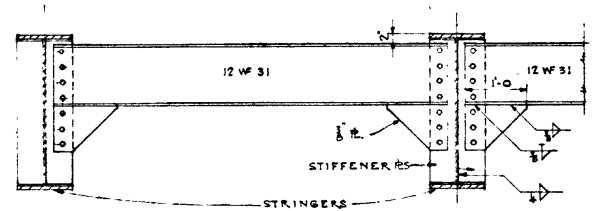
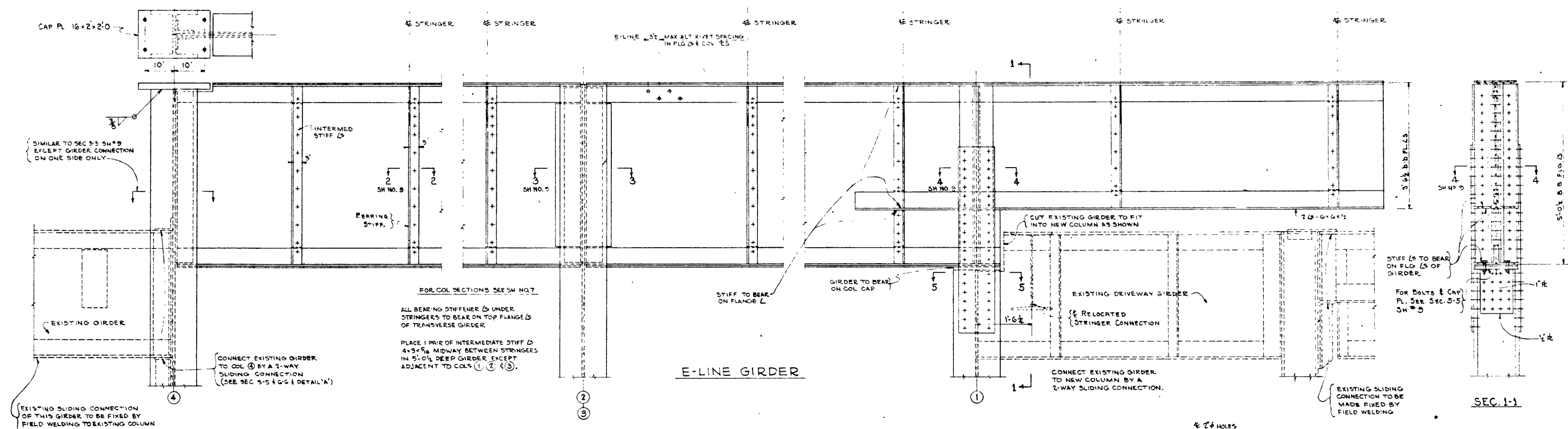
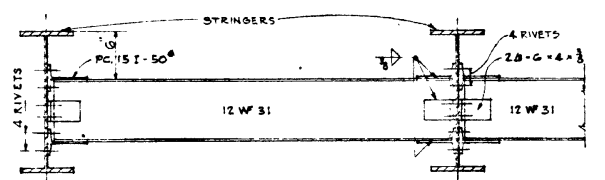


ROUTE	SECTION	COUNTY	TOTAL SHEETS	SHEET NUMBER
VARIOUS	2012-076BP	COOK	34	24

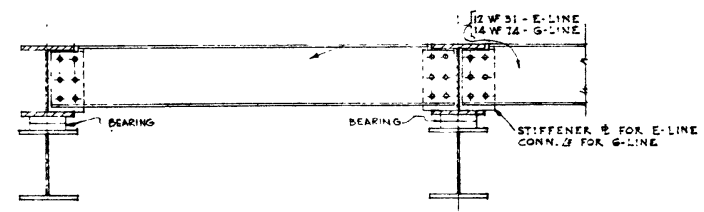
CONTRACT NO. 60V86



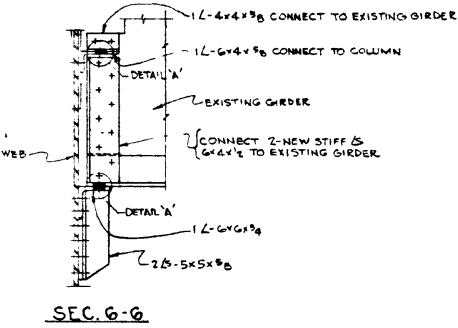
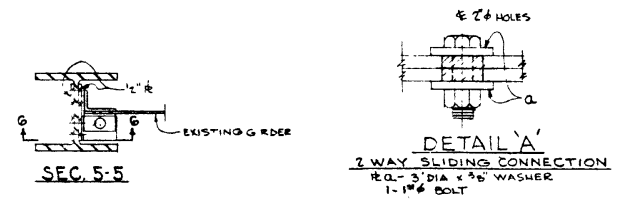
DIAPHRAM ON D-LINE - D1  
AND ON F.H.I-LINES



INTERMEDIATE DIAFRAMS D-2  
BETWEEN TRANSVERSE BENTS



DIAPHRAM AT E-LINE & G-LINE  
2-TUS-1 EACH SIDE OF JOINT  
DETAILS OF DIAFRAMS  
FOR LOCATION-SEE DECK FRAMING PLAN SH NO. 6  
SCALE 1/4" = 1'-0"



ILLINOIS DEPARTMENT OF  
TRANSPORTATION  
  
EXISTING BRIDGE PLAN  
LOCATION 4  
SN 016-0460  
I-290 (Congress St.) over Post Office to River