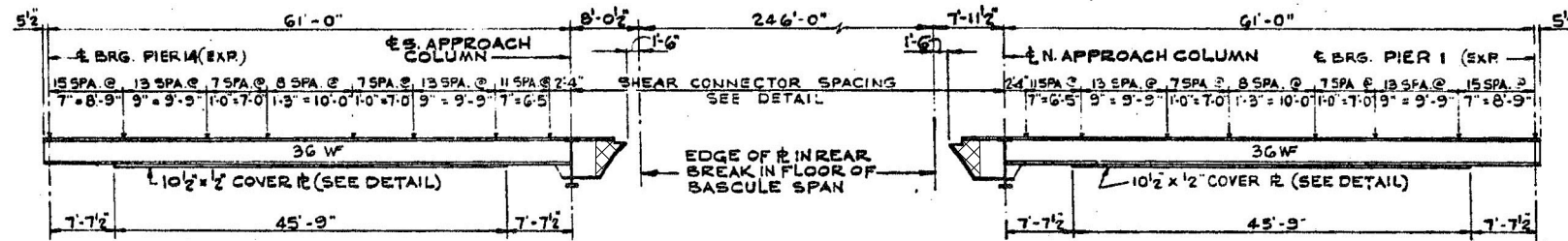
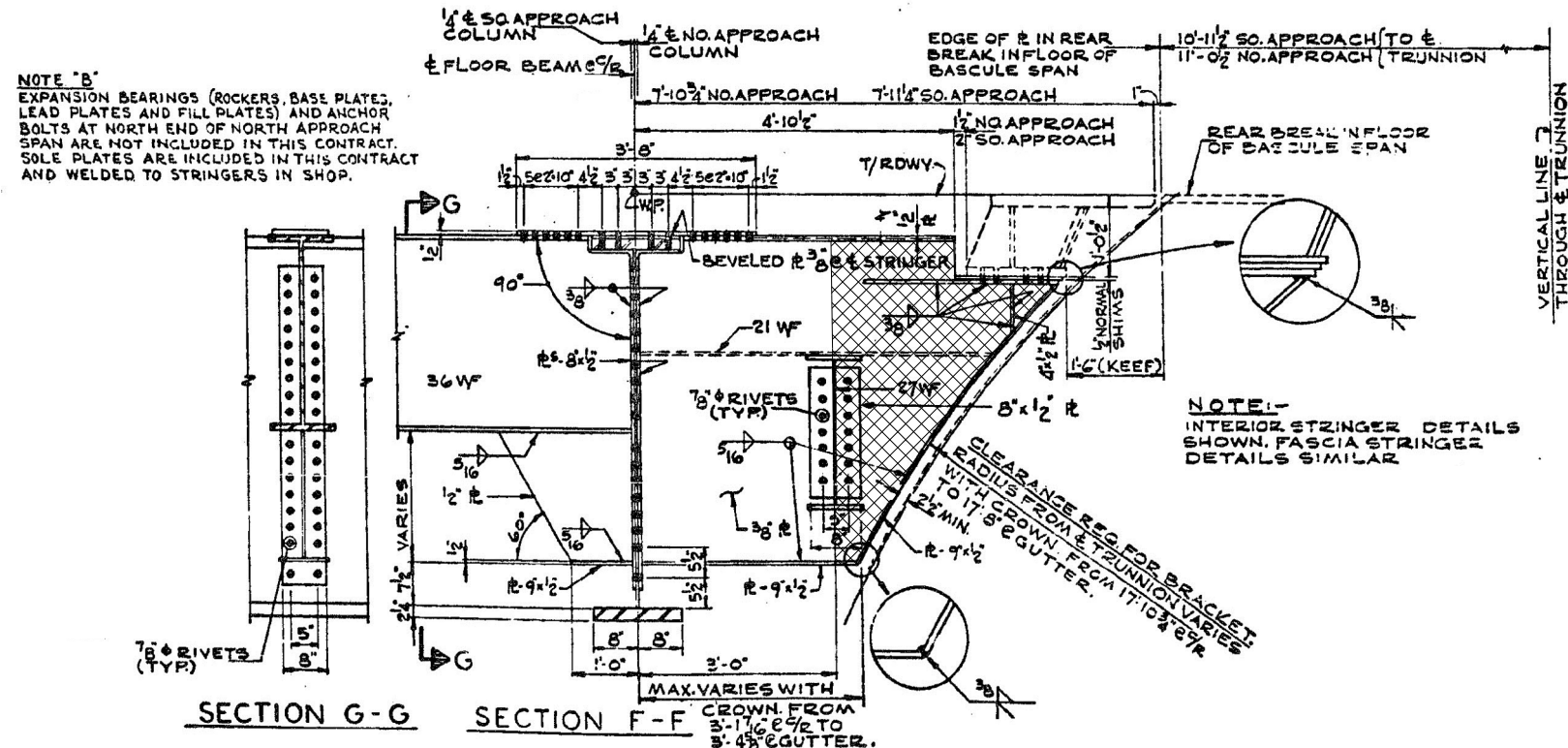


END DIAPHRAGMS:
D1 AND D2 = 12WF40
INTERMEDIATE DIAPHRAGMS:
D3 AND D4 = 16WF36

APPROACH SPANS FRAMING PLAN



TYPICAL STRINGER ELEVATION



NOTE "B"
EXPANSION BEARINGS (ROCKERS, BASE PLATES, LEAD PLATES AND FILL PLATES) AND ANCHOR BOLTS AT NORTH END OF NORTH APPROACH SPAN ARE NOT INCLUDED IN THIS CONTRACT. SOLE PLATES ARE INCLUDED IN THIS CONTRACT AND WELDED TO STRINGERS IN SHOP.

NOTE:
INTERIOR STRINGER DETAILS SHOWN. FASCIA STRINGER DETAILS SIMILAR.

AREA TO BE PAINTED
SEE SHEET 30
FOR LOCATION

PAINT STRINGERS

FILE NAME =	USER NAME = pughst	DESIGNED -	REVISED -	STATE OF ILLINOIS DEPARTMENT OF TRANSPORTATION	IL RTE. 43 / HARLEM AVE. (OVER SANTARY & SHIP CANAL) LOCATION 2: SN 016-0991 EXISTING BRIDGE PLAN	F.A.P. RTE.	SECTION	COUNTY	TOTAL SHEETS	SHEET NO.	
et:\pw\work\p1dot\pughst\00319399\0108913-sht-plan.dgn		DRAWN -	REVISED -			348	2012-078BP	COOK	36	32	
PLOT SCALE = 100.0000' / in.		CHECKED -	REVISED -			CONTRACT NO. 60V87					
\$MODELNAME\$	PLOT DATE = 11/9/2012	DATE -	REVISED -			ILLINOIS FED. AID PROJECT					