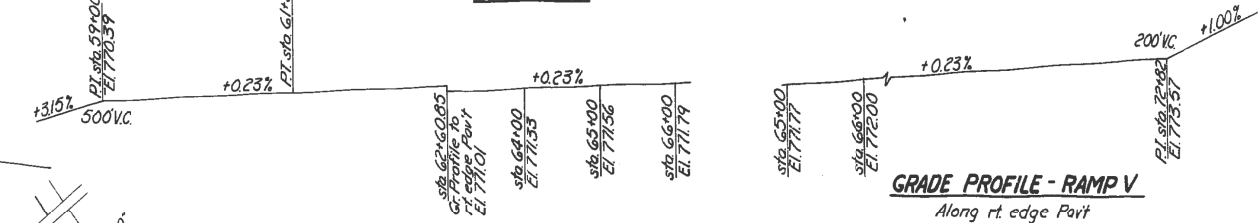
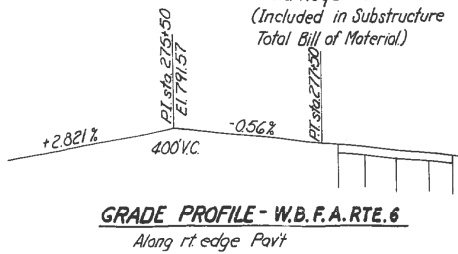
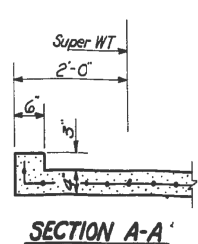
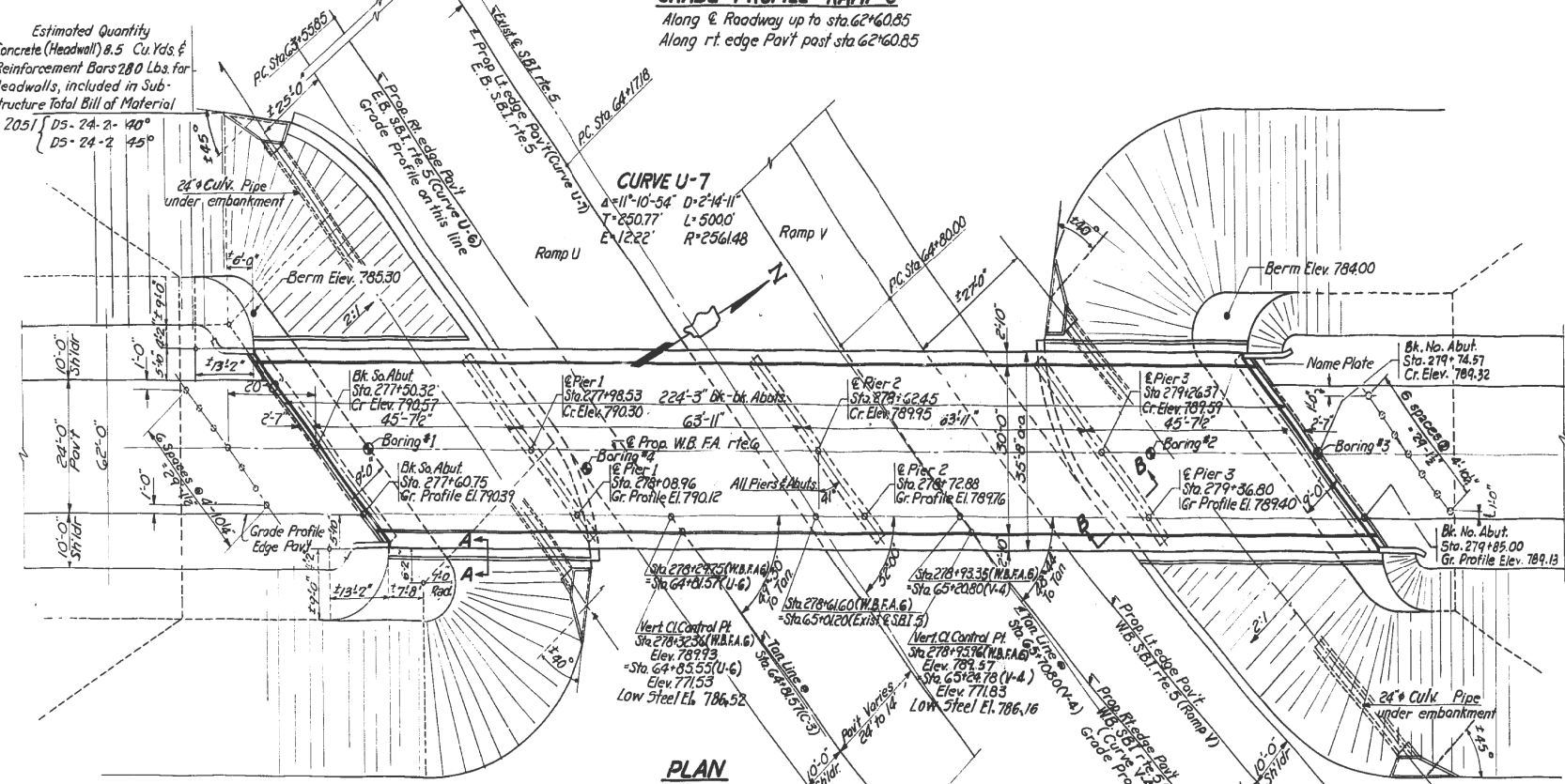


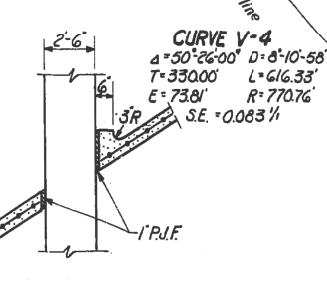
PILE DATA
 Capacity - 15 Tons
 Est Length - 20 Ft
 No Req'd - 14
 (Included in Substructure
 Total Bill of Material)



Estimated Quantity
 Class X Concrete (Headwall) 8.5 Cu. Yds.
 Reinforcement Bars 280 Lbs. for
 4 Headwalls, included in Sub-
 structure Total Bill of Material
 See Std. 2051 D5-24-2-140°
 D5-24-2-45°



CURVE U-6
 $\Delta = 23^\circ 34' 00''$ $D = 2^\circ 00'$
 $T = 597.65'$ $L = 1178.33'$
 $E = 61.60'$ $R = 2864.93'$
 $S.E. = 0.053 \%$



CURVE V-4
 $\Delta = 30^\circ 26' 00''$ $D = 8^\circ 10' 58''$
 $T = 330.00'$ $L = 616.33'$
 $E = 73.81'$ $R = 770.76'$
 $S.E. = 0.083 \%$

FOR INFORMATION ONLY

FILE NAME =	USER NAME = honga	DESIGNED -	REVISED -	STATE OF ILLINOIS DEPARTMENT OF TRANSPORTATION	SN 016-0218 PLAN AND ELEVATION	F.A.P. RTE.	SECTION	COUNTY	TOTAL SHEETS	SHEET NO.	
ei:\pw\work\p1dot\honga\0319419\0189013\sh1-plan.dgn	PLOT SCALE = 100.0000' / in.	DRAWN -	REVISED -			345	2012-077BP	COOK & KANE	19	11	
#MODELNAME#	PLOT DATE = 11/9/2012	CHECKED -	REVISED -			CONTRACT NO. 60V88					
		DATE -	REVISED -			SCALE:	SHEET 1	OF 2 SHEETS	STA.	TO STA.	ILLINOIS FED. AID PROJECT