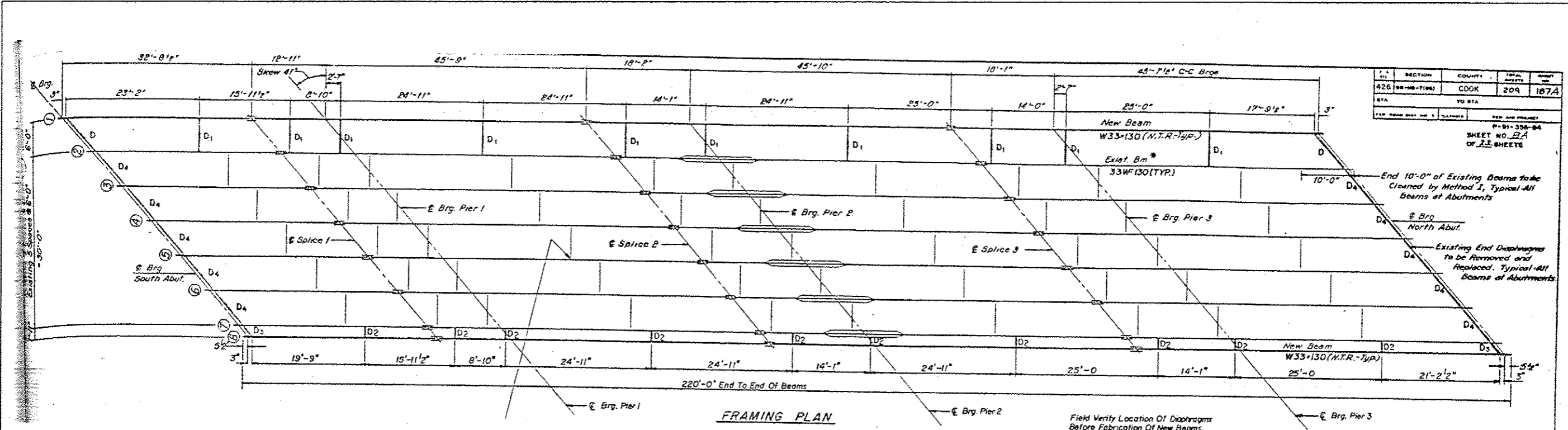


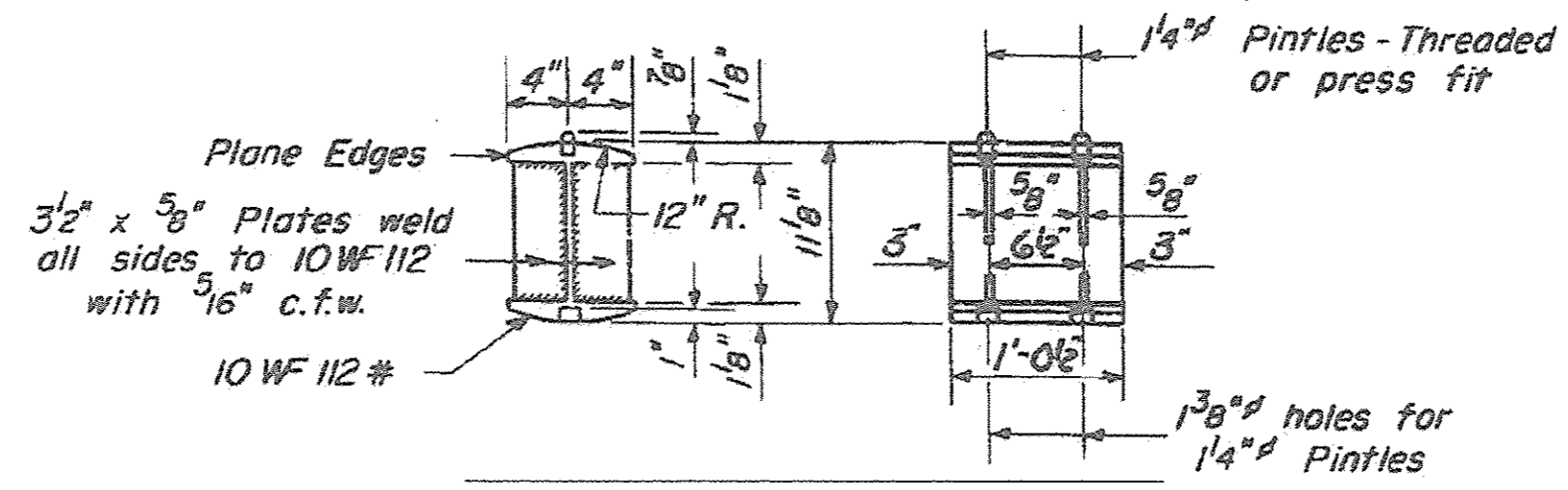
SECTION	COUNTY	TOTAL SHEETS	SHEET NO.
426 (88-118-716)	COOK	209	187A
STA. TO STA.		PER. AND PROJECT	
P-81-338-84		SHEET NO. 2A	
OF 23 SHEETS			



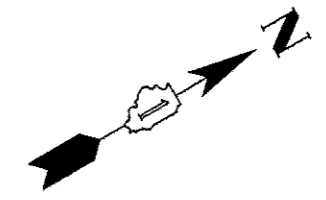
FRAMING PLAN

Field Verify Location Of Diaphragms Before Fabrication Of New Beams.

DIAPHRAGM
D = W12X40



DETAIL OF BEARING
AT ABUTMENTS



FILE NAME *	USER NAME * hange	DESIGNED -	REVISED -	STATE OF ILLINOIS DEPARTMENT OF TRANSPORTATION	SN 016-0218 FRAMING AND BEARING DETAILS	F.A.P. RTE.	SECTION	COUNTY	TOTAL SHEETS	SHEET NO.	
c:\pwwork\pwwork\hange\0319419\0189810	hrt-plan.dgn	DRAWN -	REVISED -			345	2012-077BP	COOK & KANE	19	12	
	PLOT SCALE * 100.0000 1/ in.	CHECKED -	REVISED -			CONTRACT NO. 60V88					
	PLOT DATE * 11/9/2012	DATE -	REVISED -			ILLINOIS FED. AID PROJECT					