



LEGEND

- STORM SEWER
- SUBSURFACE PAVEMENT DRAIN
- INLET
- CATCH BASIN
- PIPE CALL OUT
- STRUCTURE CALL OUT
- MANHOLE
- SWALE

EXISTING PROPOSED

- INLET
- CATCH BASIN
- PIPE CALL OUT
- STRUCTURE CALL OUT
- MANHOLE
- SWALE

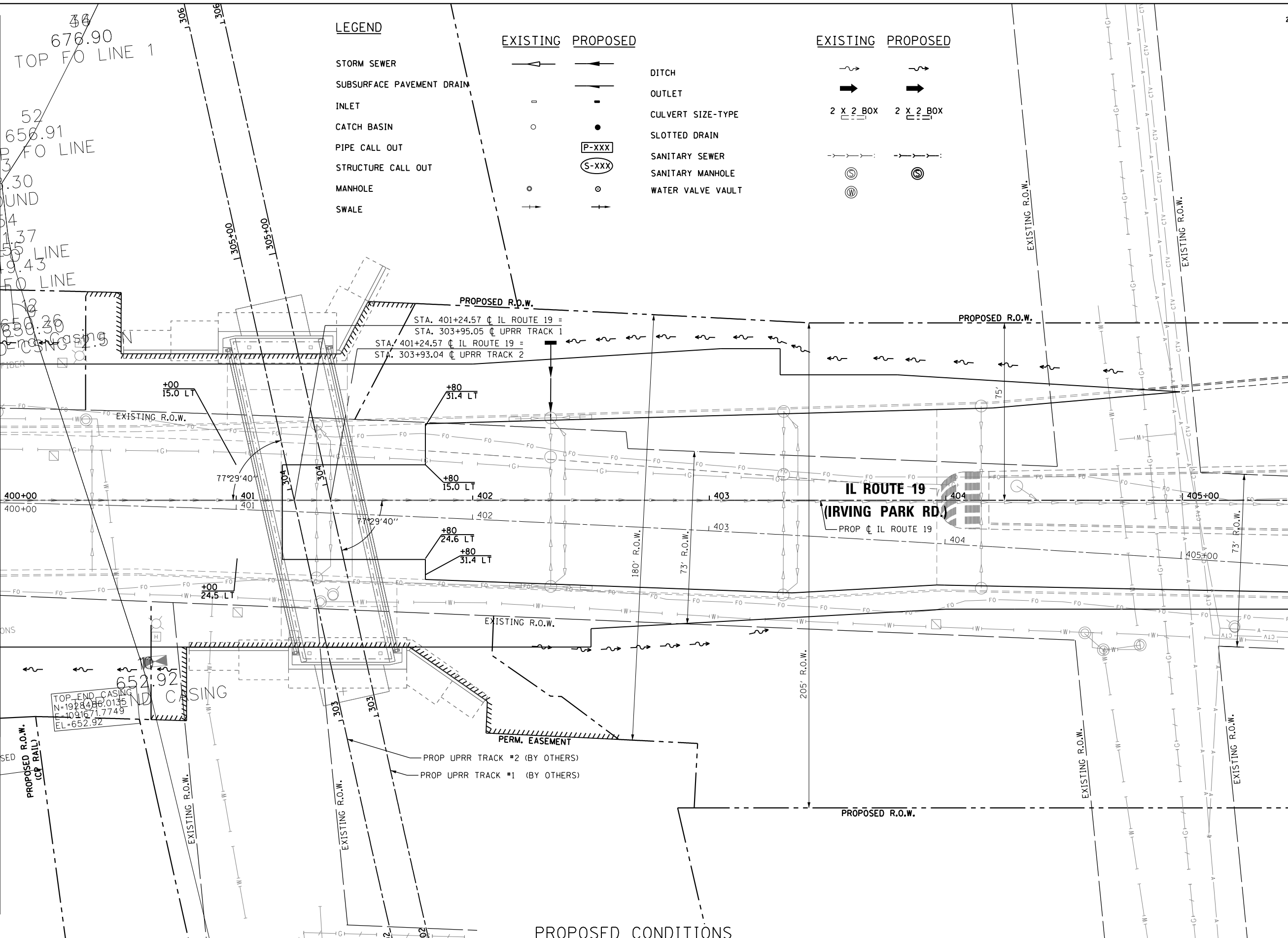
- DITCH
- OUTLET
- CULVERT SIZE-TYPE
- SLOTTED DRAIN
- SANITARY SEWER
- SANITARY MANHOLE
- WATER VALVE VAULT

EXISTING PROPOSED

- DITCH
- OUTLET
- CULVERT SIZE-TYPE
- SLOTTED DRAIN
- SANITARY SEWER
- SANITARY MANHOLE
- WATER VALVE VAULT

MATCH LINE STATION 400+00.00
SEE SHEET 40

MATCH LINE STATION 405+50.00
SEE SHEET 42



PROPOSED CONDITIONS

USER NAME = user	DESIGNED - MPK	REVISED -
	DRAWN - ML	REVISED -
PLOT SCALE = *SCALE*	CHECKED - LGP	REVISED -
PLOT DATE = 11/2/2012	DATE - 11-02-2012	REVISED -

**STATE OF ILLINOIS
DEPARTMENT OF TRANSPORTATION**

PROPOSED DRAINAGE PLAN			
IL ROUTE 19 (IRVING PARK RD.)			
SCALE: 1" = 20'	SHEET NO. OF SHEETS	STA. 400+00 TO STA. 405+50	

F.A.U. RTE. 1321	SECTION 32VB	COUNTY	TOTAL SHEETS 388	SHEET NO. 84
CONTRACT NO. 60W01				
ILLINOIS FED. AID PROJECT				