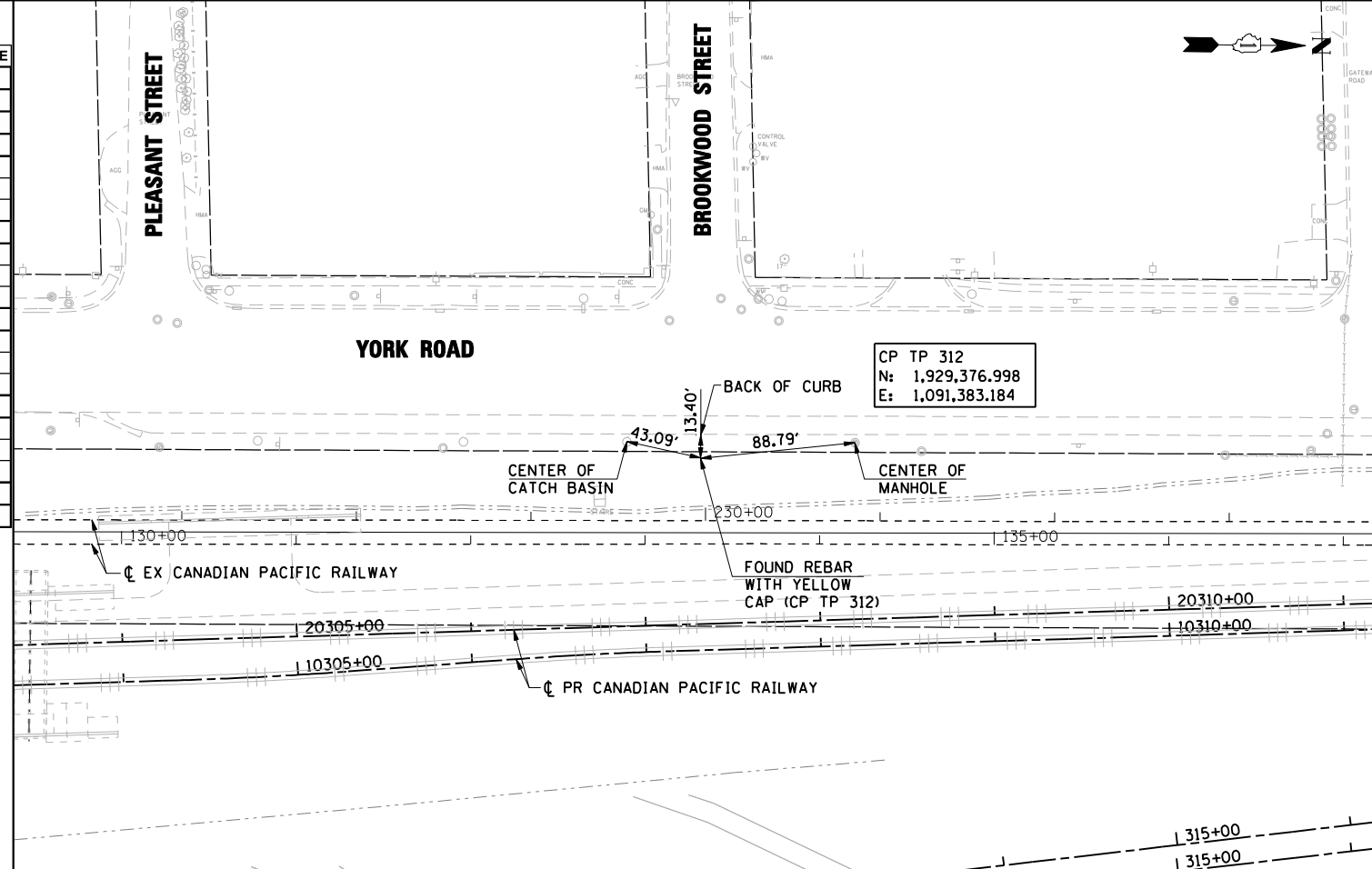


CANADIAN PACIFIC RAILWAY PROP. TRACK #1 COORDINATES					
ALIGNMENT CPR 1	NORTHING	EASTING	BEARING	DISTANCE	
POINT OF SWITCH	PI STA. 10271+95.48	1,926,719.9532	1,093,017.8861		
			N 78° 46' 00.08" W	39.95	
PI TURNOUT	PI STA. 10272+35.43	1,926,727.7357	1,092,978.7014		
			N 74° 56' 54.08" W	224.03	
CPR1-C1	PC STA. 10274+59.46	1,926,785.9119	1,092,762.3648		
	PI STA. 10275+10.67	1,926,799.2119	1,092,712.9071		
	PT STA. 10275+61.88	1,926,811.4034	1,092,663.1647		
			N 76° 13' 43.12" W	224.78	
CPR1-S01	TS STA. 10277+86.66	1,926,864.9108	1,092,444.8507		
	PI STA. 10278+46.66	1,926,879.1949	1,092,386.5704		
	SC STA. 10278+76.66	1,926,887.5210	1,092,357.7439		
			N 73° 53' 22.01" W	N/A	
CPR1-C2	SC STA. 10278+76.66	1,926,887.5210	1,092,357.7439		
	PI STA. 10286+36.94	1,927,098.4945	1,091,627.3139		
	CS STA. 10292+07.31	1,927,856.2311	1,091,565.0795		
			N 4° 41' 42.99" W	N/A	
CPR1-S02	CS STA. 10292+07.31	1,927,856.2311	1,091,565.0795		
	PI STA. 10292+37.32	1,927,886.1352	1,091,562.6235		
	ST STA. 10292+97.31	1,927,946.0897	1,091,560.1567		
			N 2° 21' 21.89" W	1134.06	
CPR1-C3	PC STA. 10304+31.37	1,929,079.1887	1,091,513.5358		
	PI STA. 10304+80.05	1,929,127.8322	1,091,511.5344		
	PT STA. 10305+28.72	1,929,176.3468	1,091,507.4693		
			N 4° 47' 23.11" W	91.03	
CPR1-C4	PC STA. 10306+19.75	1,929,267.0597	1,091,499.8682		
	PI STA. 10306+68.43	1,929,315.5743	1,091,495.8031		
	PT STA. 10307+17.09	1,929,364.2178	1,091,493.8017		
			N 2° 21' 21.89" W	1811.44	
CPR1-C5	PC STA. 10325+28.53	1,931,174.1237	1,091,419.3339		
	PI STA. 10326+20.49	1,931,266.0086	1,091,415.5534		
	PT STA. 10327+12.44	1,931,357.9677	1,091,414.7318		
			N 0° 30' 42.83" W	213.43	
POT	PI STA. 10329+25.87	1,931,571.3864	1,091,412.8250		

CANADIAN PACIFIC RAILWAY PROP. TRACK #2 COORDINATES					
ALIGNMENT CPR 2	NORTHING	EASTING	BEARING	DISTANCE	
POINT OF SWITCH	PI STA. 20276+30.43	1,926,811.5813	1,092,556.5383		
			N 78° 46' 00.08" W	39.95	
PI TURNOUT	PI STA. 20276+70.38	1,926,819.3637	1,092,517.3537		
			N 74° 56' 54.08" W	123.09	
CPR2-S01	TS STA. 20277+93.47	1,926,851.3276	1,092,398.4915		
	PI STA. 20278+53.47	1,926,866.9104	1,092,340.5449		
	SC STA. 20278+83.47	1,926,875.8784	1,092,311.9117		
			N 72° 39' 41.78" W	N/A	
CPR2-C1	SC STA. 20278+83.47	1,926,875.8784	1,092,311.9117		
	PI STA. 20286+25.72	1,927,097.7289	1,091,603.5892		
	CS STA. 20291+89.50	1,927,837.4903	1,091,542.8312		
			N 4° 38' 34.18" W	N/A	
CPR2-S02	CS STA. 20291+89.50	1,927,837.4903	1,091,542.8312		
	PI STA. 20292+19.51	1,927,867.3944	1,091,540.3751		
	ST STA. 20292+79.50	1,927,927.3489	1,091,537.9083		
			N 2° 21' 21.89" W	3213.33	
CPR2-C2	PC STA. 20324+92.83	1,931,137.9625	1,091,405.8091		
	PI STA. 20325+84.42	1,931,229.4688	1,091,402.0441		
	PT STA. 20326+75.98	1,931,321.0487	1,091,401.2056		
			N 0° 31' 28.50" W	250.23	
POT	PI STA. 20329+26.21	1,931,571.2621	1,091,398.9146		



FILE NAME = ...\\D160001-SHT-ATE-PRR02.DGN



USER NAME = nratem  
 PLOT SCALE = 100.00' / IN.  
 PLOT DATE = 11/2/2012

DESIGNED - NMR  
 DRAWN - NMR  
 CHECKED - MPH  
 DATE - 11-02-2012

REVISED -  
 REVISED -  
 REVISED -  
 REVISED -

STATE OF ILLINOIS  
 DEPARTMENT OF TRANSPORTATION

ALIGNMENT TIES & BENCHMARKS  
 CANADIAN PACIFIC RAILWAY

SCALE: 1"=50' SHEET NO. 2 OF 2 SHEETS STA. TO STA.

F.A.U. RTE.	SECTION	COUNTY	TOTAL SHEETS	SHEET NO.
1321	32VB		388	305

CONTRACT NO. 60W01  
 ILLINOIS FED. AID PROJECT