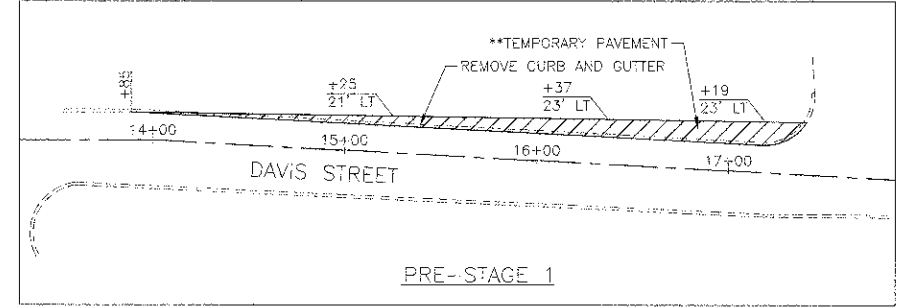
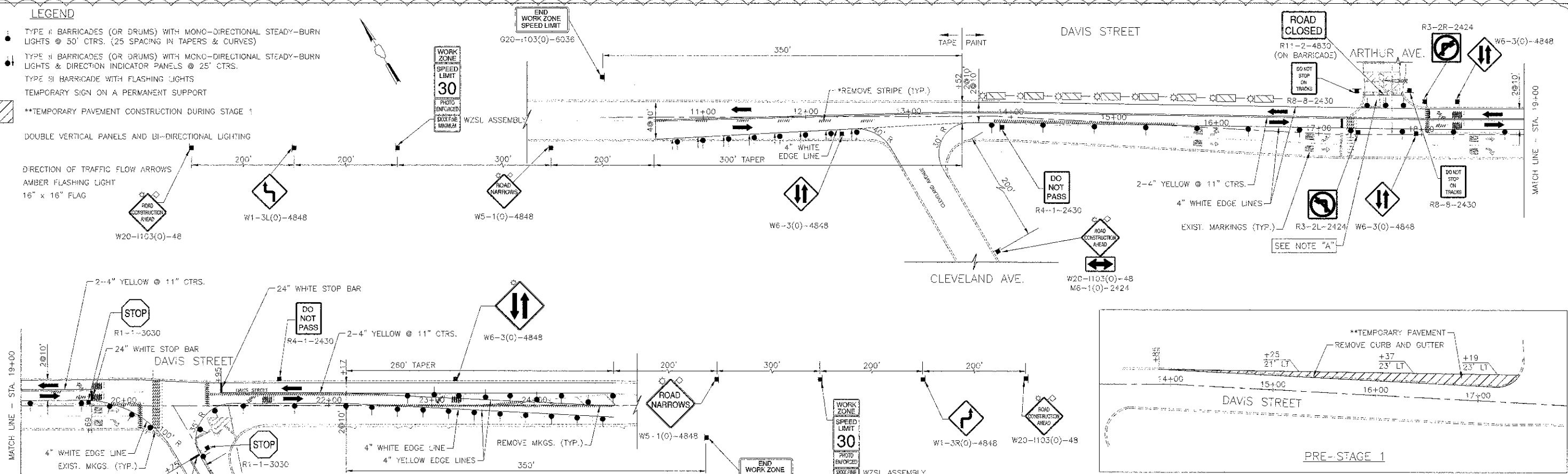


LEGEND

- TYPE II BARRICADES (OR DRUMS) WITH MONO-DIRECTIONAL STEADY-BURN LIGHTS @ 50' CTRS. (25' SPACING IN TAPERS & CURVES)
- TYPE II BARRICADES (OR DRUMS) WITH MONO-DIRECTIONAL STEADY-BURN LIGHTS & DIRECTION INDICATOR PANELS @ 25' CTRS.
- TYPE III BARRICADE WITH FLASHING LIGHTS
- TEMPORARY SIGN ON A PERMANENT SUPPORT
- ▨ **TEMPORARY PAVEMENT CONSTRUCTION DURING STAGE 1
- ▭ DOUBLE VERTICAL PANELS AND BI-DIRECTIONAL LIGHTING
- DIRECTION OF TRAFFIC FLOW ARROWS
- ⚡ AMBER FLASHING LIGHT
- 16" x 16" FLAG

DATE	BY
DATE	BY
DATE	BY

DATE	BY
DATE	BY
DATE	BY



RAILROAD CROSSING WILL BE CLOSED AT ARTHUR AVENUE BEGINNING

TEMPORARY INFORMATION SIGN

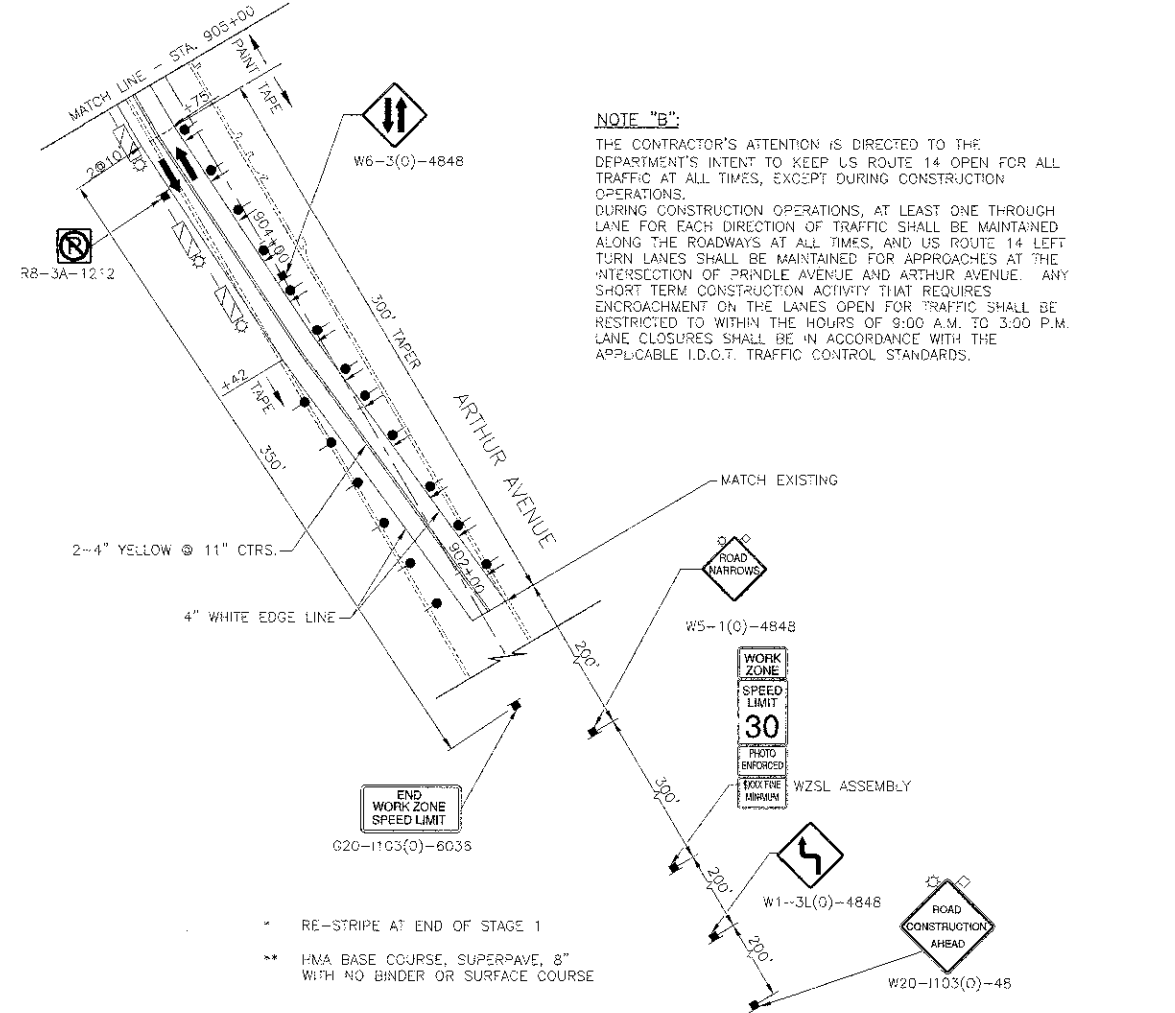
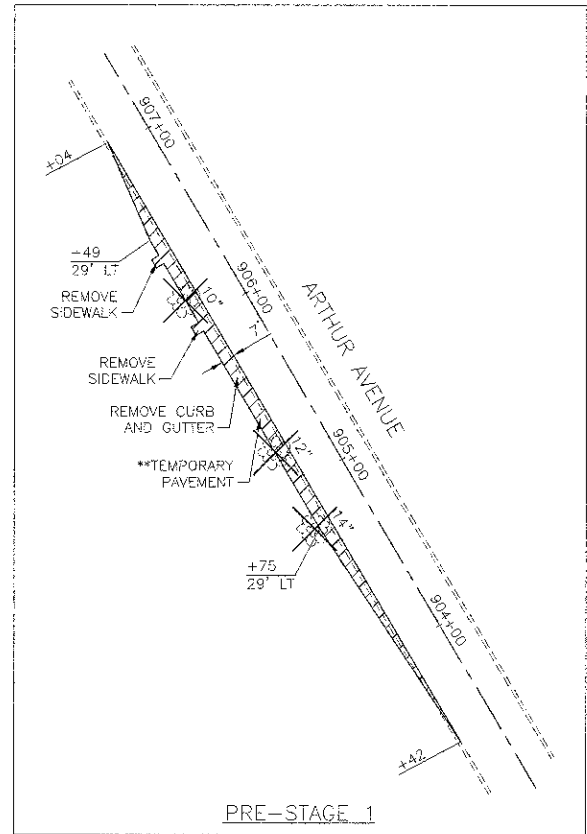
FOR DETAILS NOT SHOWN, SEE APPLICABLE PORTIONS OF DIST. 1 STANDARD TC-22 ("TEMPORARY INFORMATION SIGNING")

DETAIL "A"

NOTE "A":

CROSSING SHALL BE CLOSED AT THE DIRECTION OF THE UNION PACIFIC RAILROAD AND ENGINEER, AND REMAIN CLOSED DURING CONSTRUCTION UNTIL COMPLETED FULL-WIDTH ACROSS THE TRACKS. TO INCLUDE ALL PERMANENT LANE CONFIGURATIONS AND THE ASSOCIATED PERMANENT SIGNAL AND RAILROAD WARNING DEVICE SYSTEMS HAVE BEEN COMPLETED. AT LEAST ONE WEEK PRIOR TO CLOSING, TEMPORARY INFORMATION SIGNS SHALL BE ERRECTED AT LOCATIONS DESIGNATED BY THE ENGINEER. OPENING OF THE CROSSING SHALL NOT OCCUR UNTIL THE PERMANENT TRAFFIC SIGNAL AND RAILROAD WARNING DEVICES HAVE BEEN INSPECTED BY APPROPRIATE AGENCIES. (SEE DETAIL "A").

WHEN A GRADE CROSSING EXISTS EITHER WITHIN OR IN THE VICINITY OF A TEMPORARY TRAFFIC CONTROL ZONE, LANE RESTRICTIONS, FLAGGING, OR OTHER OPERATIONS SHALL NOT BE PERFORMED IN A MANNER THAT WOULD CAUSE HIGHWAY VEHICLES TO STOP ON THE RAILROAD OR LRT TRACKS, UNLESS A FLAGGER OR UNIFORMED LAW ENFORCEMENT OFFICER IS PROVIDED AT THE GRADE CROSSING TO MINIMIZE THE POSSIBILITY OF HIGHWAY VEHICLES STOPPING ON THE TRACKS, EVEN IF AUTOMATIC WARNING DEVICES ARE IN PLACE.



NOTE "B":

THE CONTRACTOR'S ATTENTION IS DIRECTED TO THE DEPARTMENT'S INTENT TO KEEP US ROUTE 14 OPEN FOR ALL TRAFFIC AT ALL TIMES, EXCEPT DURING CONSTRUCTION OPERATIONS. DURING CONSTRUCTION OPERATIONS, AT LEAST ONE THROUGH LANE FOR EACH DIRECTION OF TRAFFIC SHALL BE MAINTAINED ALONG THE ROADWAYS AT ALL TIMES, AND US ROUTE 14 LEFT TURN LANES SHALL BE MAINTAINED FOR APPROACHES AT THE INTERSECTION OF BRINDLE AVENUE AND ARTHUR AVENUE. ANY SHORT TERM CONSTRUCTION ACTIVITY THAT REQUIRES ENCROACHMENT ON THE LANES OPEN FOR TRAFFIC SHALL BE RESTRICTED TO WITHIN THE HOURS OF 9:00 A.M. TO 3:00 P.M. LANE CLOSURES SHALL BE IN ACCORDANCE WITH THE APPLICABLE I.D.O.T. TRAFFIC CONTROL STANDARDS.



DESIGNED - RTM	REVISIONS - 11/30/2012
DRAWN - JRR	REVISIONS - 12/28/2012
CHECKED - RTM	REVISIONS -
DATE - 10/22/12	REVISIONS -

STATE OF ILLINOIS DEPARTMENT OF TRANSPORTATION



SUGGESTED CONSTRUCTION PROCEDURE TRAFFIC CONTROL DEVICES FOR STAGE 1

SHEET NO. 2 OF 2 SHEETS

F.A.D. RTE.	SECTION	COUNTY	TOTAL SHEET NO.
3512	02-06177-00 WR	COOK	142 of 31
PROJECT NO. M-6003(426)	CONTRACT NO. 63514		
FED. ROAD DIST. NO. 1 ILLINOIS FED. AID PROJECT			