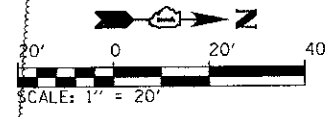
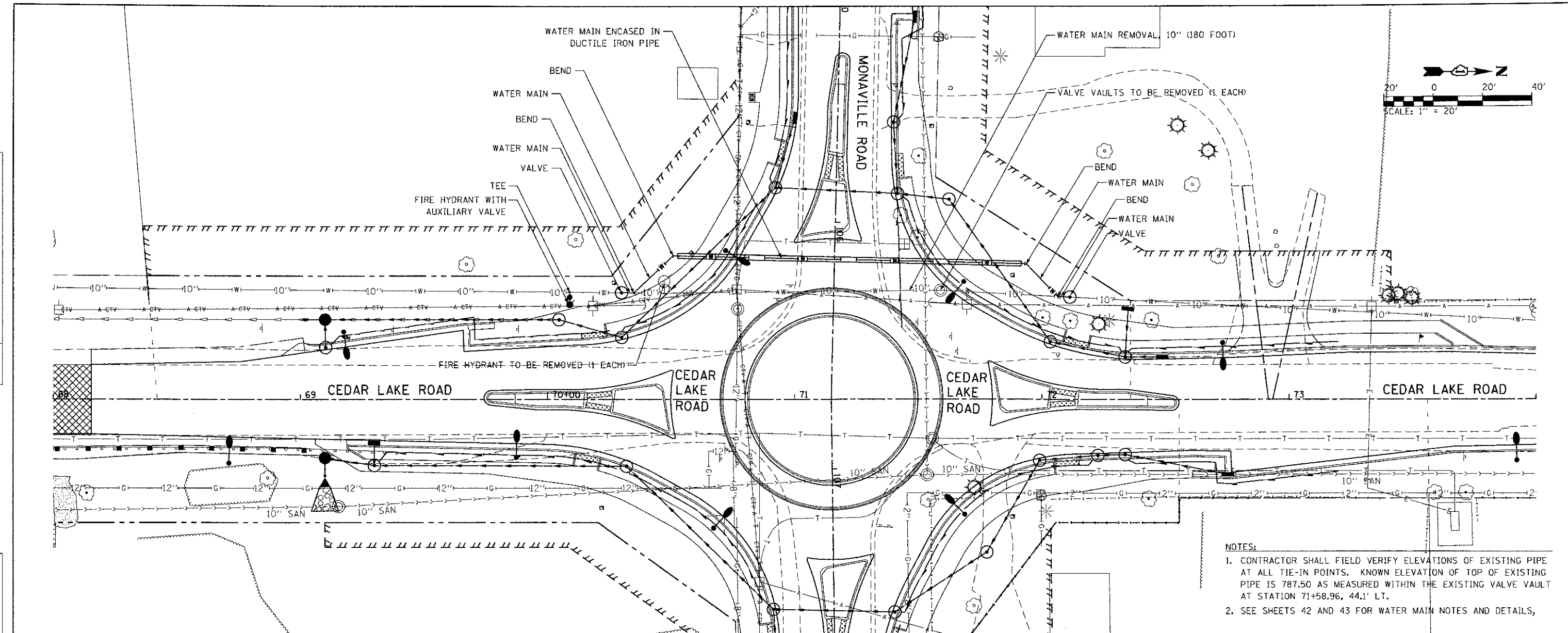
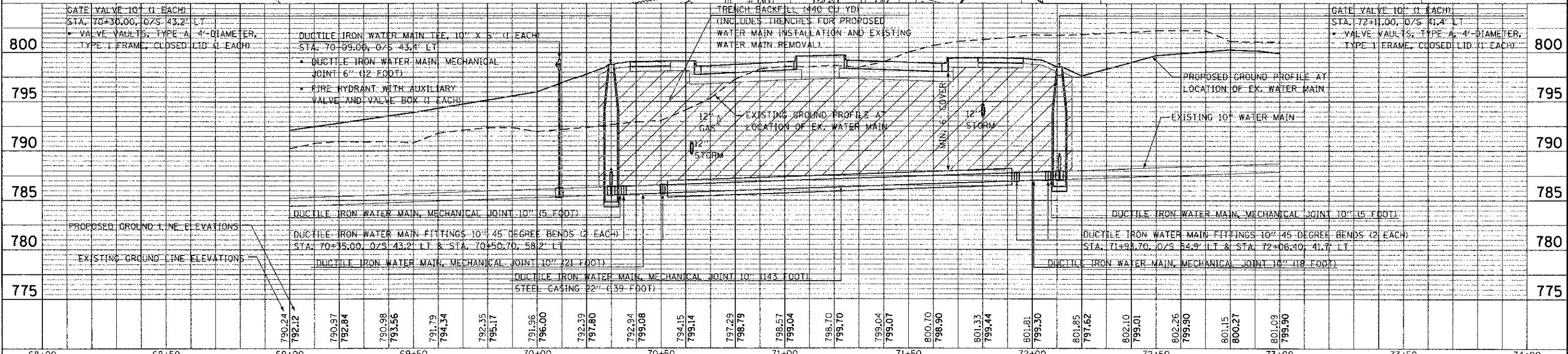


PLAN	DESIGNED	DATE
	BY	
	CHECKED	
	DATE	
	NOTED	
	DATE	
	FILE NAME	

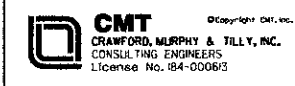
PROFILE	DESIGNED	DATE
	BY	
	CHECKED	
	DATE	
	NOTED	
	DATE	
	FILE NAME	



- NOTES:
1. CONTRACTOR SHALL FIELD VERIFY ELEVATIONS OF EXISTING PIPE AT ALL TIE-IN POINTS. KNOWN ELEVATION OF TOP OF EXISTING PIPE IS 787.50 AS MEASURED WITHIN THE EXISTING VALVE VAULT AT STATION 71+58.96, 44.1' LT.
  2. SEE SHEETS 42 AND 43 FOR WATER MAIN NOTES AND DETAILS,



68+00	68+50	69+00	69+50	70+00	70+50	71+00	71+50	72+00	72+50	73+00	73+50	74+00										
		790.24 792.12	790.97 792.84	790.98 793.56	791.79 794.34	792.35 795.17	791.96 796.00	792.39 797.80	792.94 799.08	794.15 799.14	797.29 798.79	798.57 799.04	798.70 799.70	799.04 799.07	800.70 798.90	801.33 799.44	801.81 799.30	801.85 797.62	802.10 799.01	802.26 799.90	801.15 800.27	801.09 799.90



USER NAME = Jeff Sedig	DESIGNED -	REVISIONS
	DRAWN -	REVISIONS -
	CHECKED -	REVISIONS -
	DATE -	REVISIONS -

STATE OF ILLINOIS  
DEPARTMENT OF TRANSPORTATION

WATER MAIN PLAN AND PROFILE

SCALE: 20H:5V SHEET NO. 1 OF 1 SHEETS STA. - TO STA. -

F.A.U. RTE. 0192	SECTION 06-00153-07-CH	COUNTY LAKE	TOTAL SHEETS 120	SHEET NO. 41
CONTRACT NO. 63682				
FED. ROAD DIST. NO. ILLINOIS FED. AID PROJECT				

FILE NAME: I:\A\K\CD\122401\0-ns-NC000\_Sheets\util\fig\_1\_watermain.dgn