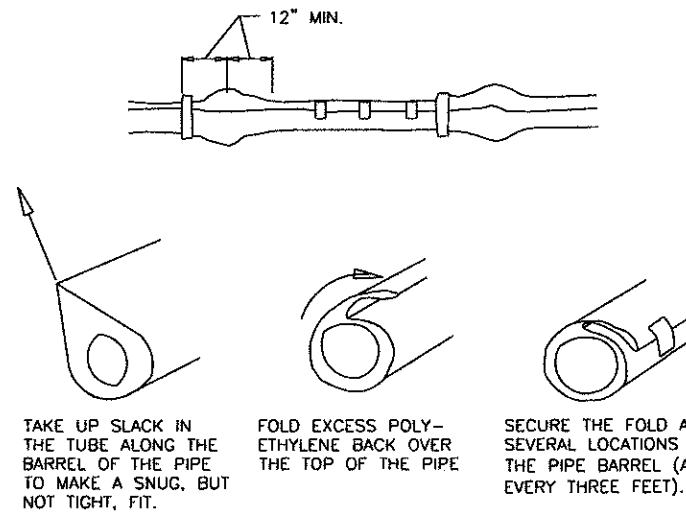
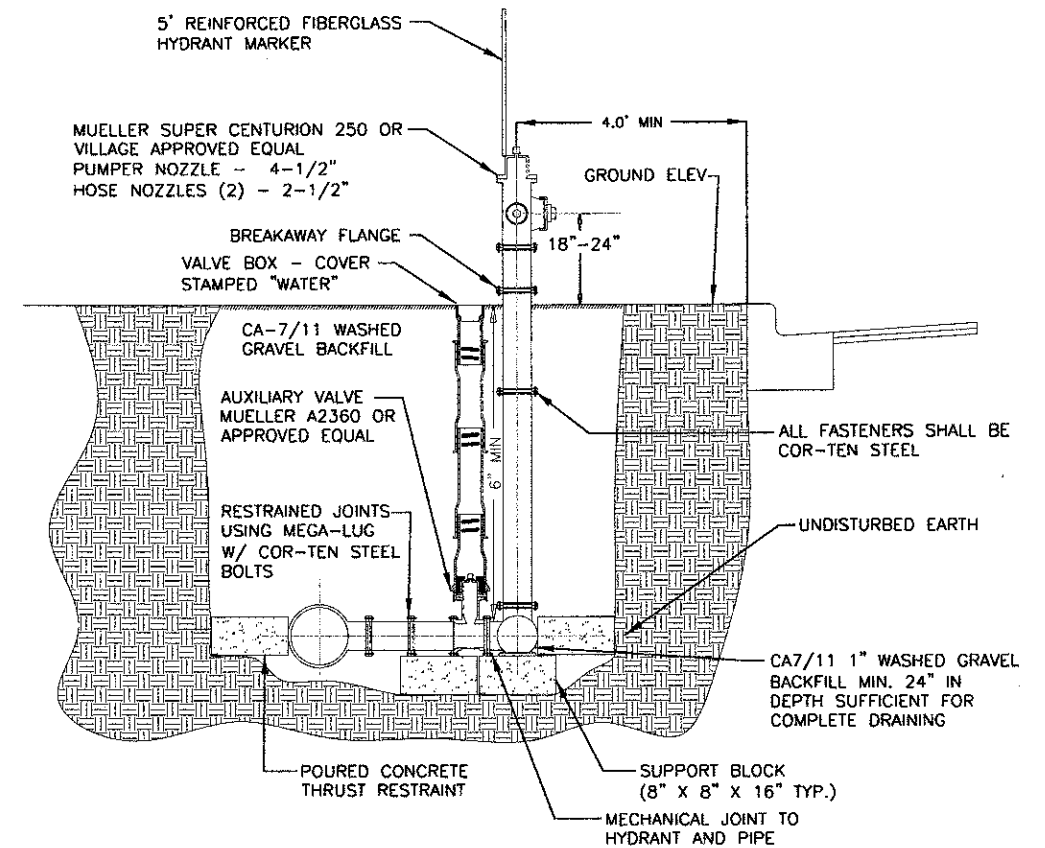


VALVE VAULT DETAIL
N.T.S.

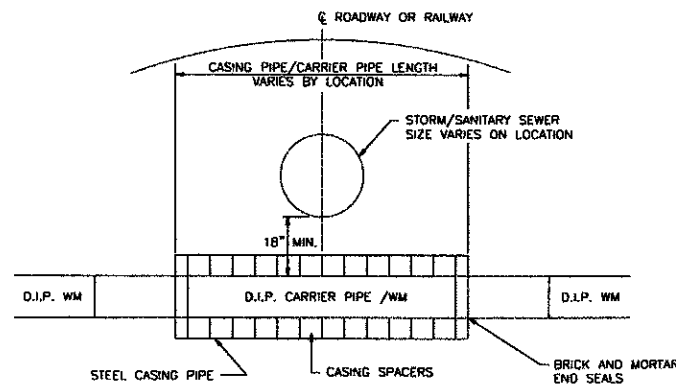


POLYETHYLENE ENCASEMENT FOR DUCTILE IRON PIPE
N.T.S.

- NOTES:**
1. REPAIR ALL SMALL RIPS, TEARS OR OTHER TUBE DAMAGE WITH ADHESIVE TAPE.
 2. ONE LENGTH OF POLYETHYLENE TUBE FOR EACH LENGTH OF PIPE, OVERLAPPED AT JOINT.

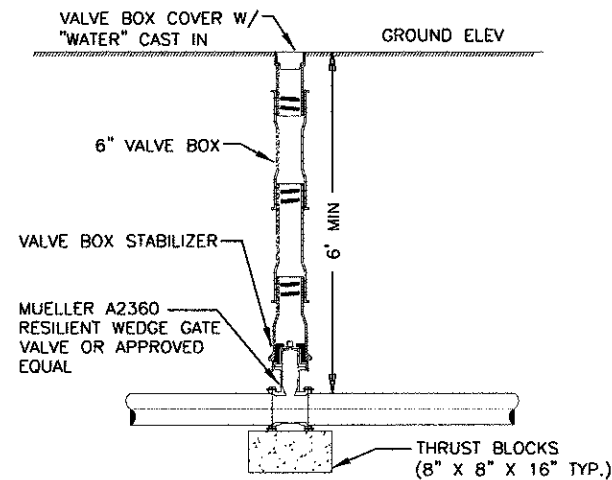


FIRE HYDRANT W/ AUX VALVE DETAIL
N.T.S.



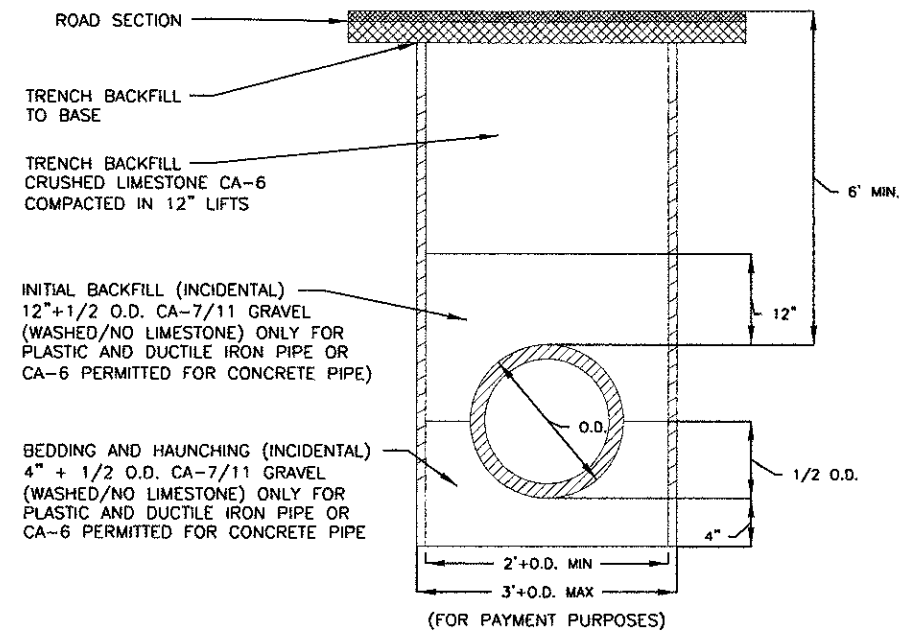
CASING PIPE DETAIL
N.T.S.

- NOTES:**
1. AT LEAST THREE CASING SPACERS/PIPE LENGTH SHALL BE INSTALLED WITH THE CARRIER PIPE.
 2. MECHANICAL RESTRAINED JOINT PIPE SHALL BE USED IN CASING.



**VALVE BOXES PERMITTED ONLY WHERE APPROVED BY THE VILLAGE.

VALVE BOX DETAIL
N.T.S.



**PAVEMENT SHALL INCLUDE ALL AREAS WITHIN 2FT OF STREETS, CURBS, GUTTERS, DRIVEWAYS, AND SIDEWALKS.

TRENCH SECTION IN PAVEMENT **
N.T.S.

INSIDE DIAMETER OF CONDUIT IN INCHES "D"	MAXIMUM TRENCH WIDTH IN FEET FOR PAYMENT	MAXIMUM PAVEMENT REMOVAL WIDTH IN FEET FOR PAYMENT
6	3.58	5.58
8	3.78	5.78
10	3.97	5.97
12	4.17	6.17
14	4.36	6.36
15	4.46	6.46
16	4.56	6.56
18	4.75	6.75
20	4.94	6.94
21	5.04	7.04
24	5.33	7.33

FILE NAME = L:\LAKEDON\11224\01\Draw\Notes\Notes\Drawn\Isidoro



USER NAME = Jeff Sedig	DESIGNED - MNB	REVISED -
PLLOT SCALE = 40.0000' / 1"	DRAWN - MNB	REVISED -
PLLOT DATE = 11/12/2012 1:03:19 PM	CHECKED - CMC	REVISED -
	DATE - 10/22/2012	REVISED -

**STATE OF ILLINOIS
DEPARTMENT OF TRANSPORTATION**

WATER MAIN NOTES AND DETAILS

SCALE: N.T.S. SHEET NO. 1 OF 2 SHEETS STA. - TO STA. -

F.A.D. RTE.	SECTION	COUNTY	TOTAL SHEETS	SHEET NO.
0192	06-00153-07-CH	LAKE	120	42
CONTRACT NO. 63682				
FED. ROAD DIST. NO. ILLINOIS/FED. AID PROJECT				