

••THIS PROJECT DISTURBS 3.53 ACRES OF TOTAL LAND AREA.

**TEMPORARY EROSION CONTROL NOTES**

1. EROSION CONTROL SHALL BE PROVIDED IN ACCORDANCE WITH THE LAKE COUNTY STORMWATER MANAGEMENT COMMISSION TYPICAL CONSTRUCTION SEQUENCING.
2. UNLESS OTHERWISE INDICATED, ALL VEGETATIVE AND STRUCTURAL EROSION AND SEDIMENT CONTROL PRACTICES WILL BE CONSTRUCTED ACCORDING TO MINIMUM STANDARDS AND SPECIFICATIONS IN THE ILLINOIS URBAN MANUAL REVISED FEBRUARY 2010.
3. A COPY OF THE APPROVED EROSION CONTROL AND SEDIMENT CONTROL PLAN SHALL BE MAINTAINED ON THE SITE AT ALL TIME.
4. THE CONTRACTOR WILL BE REQUIRED TO IMPLEMENT AND MAINTAIN EROSION CONTROL MEASURES IMMEDIATELY AFTER STRIPPING OF EXISTING VEGETATION.
5. NO RUNOFF FROM STRIPPED AREAS WILL LEAVE THE SITE OTHER THAN THROUGH EROSION CONTROL PROTECTIVE MEASURES. THE CONTRACTOR WILL ADJUST HIS OPERATIONS AND IMPLEMENT EROSION CONTROL MEASURES ACCORDINGLY.
6. NO WORK SHALL BE PERFORMED IN FLOWING WATER, PRIORITY SHALL BE GIVEN TO COMPLETION AND STABILIZATION OF WORK IN AND NEAR THE CRITICAL AREAS (WETLANDS AND WATERS OF THE U.S.) ONCE THIS WORK HAS BEGUN. ALL CRITICAL AREAS SHOULD RECEIVE TEMPORARY OR PERMANENT STABILIZATION AT THE END OF THE DAY.
7. THE CONTRACTOR SHALL SURROUND ALL EARTH STOCKPILES WITH SILT FILTER FENCE, WHICH SHALL BE PAID FOR AS PERIMETER EROSION BARRIER.
8. ALL ADJACENT STREETS MUST BE KEPT CLEAR OF DEBRIS, INSPECTED DAILY, AND CLEANED WHEN NECESSARY.
9. EROSION CONTROL MEASURES SHALL BE INSPECTED 24 HOURS AFTER ANY STORM OF PRECIPITATION.
10. ALL CONCRETE TRUCK WASHOUT LOCATIONS SHALL BE DETERMINED BY THE CONTRACTOR AND MUST REMAIN WITHIN THE LIMITS OF CONSTRUCTION. THE DESIGNATED AREA SHALL BE APPROVED BY THE ENGINEER.
  - a.) A CONCRETE WASHOUT SIGN SHALL BE INSTALL WITHIN 20 FEET OF THE TEMPORARY CONCRETE TRUCK WASHOUT FACILITY. AT A MINIMUM, THE SIGN SHALL READ "CONCRETE WASHOUT" IN 6" TALL LETTERS.
  - b.) INSPECTION SHALL OCCUR ONCE A WEEK AND DAILY DURING CONCRETE OPERATIONS. REPAIR/REPLACEMENT OF THE FACILITY SHALL BE MADE SUCH THAT CONCRETE WASTE IS CONTAINED.
  - c.) THE CONCRETE WASHOUT FACILITY MUST BE CLEANED AND ALL OF THE CONTAINED MATERIALS SHALL BE REMOVED AND DISPOSED OF AT A LEGAL OFF-SITE LOCATION WHEN THE FACILITY HAS REACHED 50% CAPACITY. UPON COMPLETION OF CONCRETE OPERATIONS, THE CONCRETE TRUCK WASHOUT AND ALL MATERIALS CONTAINED WITHIN SHALL BE DISPOSED OF AT A LEGAL OFF-SITE LOCATION.
11. THE CONTRACTOR IS RESPONSIBLE FOR PROPER INSTALLATION, INSPECTION, AND MAINTENANCE OF ALL EROSION CONTROL DEVICES. ALL EROSION CONTROL DEVICES SHALL BE MAINTAINED, REPAIRED, AND REPLACED THROUGHOUT THE ENTIRE CONSTRUCTION OF PROJECT. AFTER ACHIEVING PERMANENT VEGETATION, ALL EROSION CONTROL DEVICES SHALL BE REMOVED, ALL DRAINAGE STRUCTURES CLEANED, AND ALL AREAS DISTURBED BY INSTALLATION OF EROSION CONTROL DEVICES RESTORED.
12. SILT BASKETS SHALL BE INSTALLED AT ALL CURB STRUCTURES. SILT BASKETS SHALL BE CLEANED AT THE DIRECTION OF THE ENGINEER. COSTS FOR INSTALLATION AND CLEANING OF SILT BASKETS SHALL BE INCLUDED IN THE CONTRACT UNIT PRICE FOR INLET FILTERS.
13. ALL PROPOSED DITCH BOTTOMS SHALL BE LINED WITH HEAVY DUTY EROSION CONTROL BLANKET AND FLOCCULATION POWDER PER SPECIFICATIONS. FLOCCULATION LOGS SHALL ALSO BE PLACED IN LOCATIONS DETERMINED BY THE ENGINEER AND PER SPECIFICATIONS.
14. PROPOSED DITCH SIDE SLOPES SHALL BE STABILIZED WITH TEMPORARY FILTER FABRIC UNTIL FINAL STABILIZATION WITH EROSION CONTROL BLANKET AND SEEDING. TEMPORARY FILTER FABRIC WILL BE MEASURED IN SQ YD AND PAID FOR AS FILTER FABRIC.
15. TEMPORARY FENCE SHALL BE INSTALLED IN LOCATIONS AS DIRECTED BY THE ENGINEER TO PREVENT ENTRY INTO SURVEYED WETLANDS.

**GENERAL NOTES FOR SOIL EROSION CONTROL**

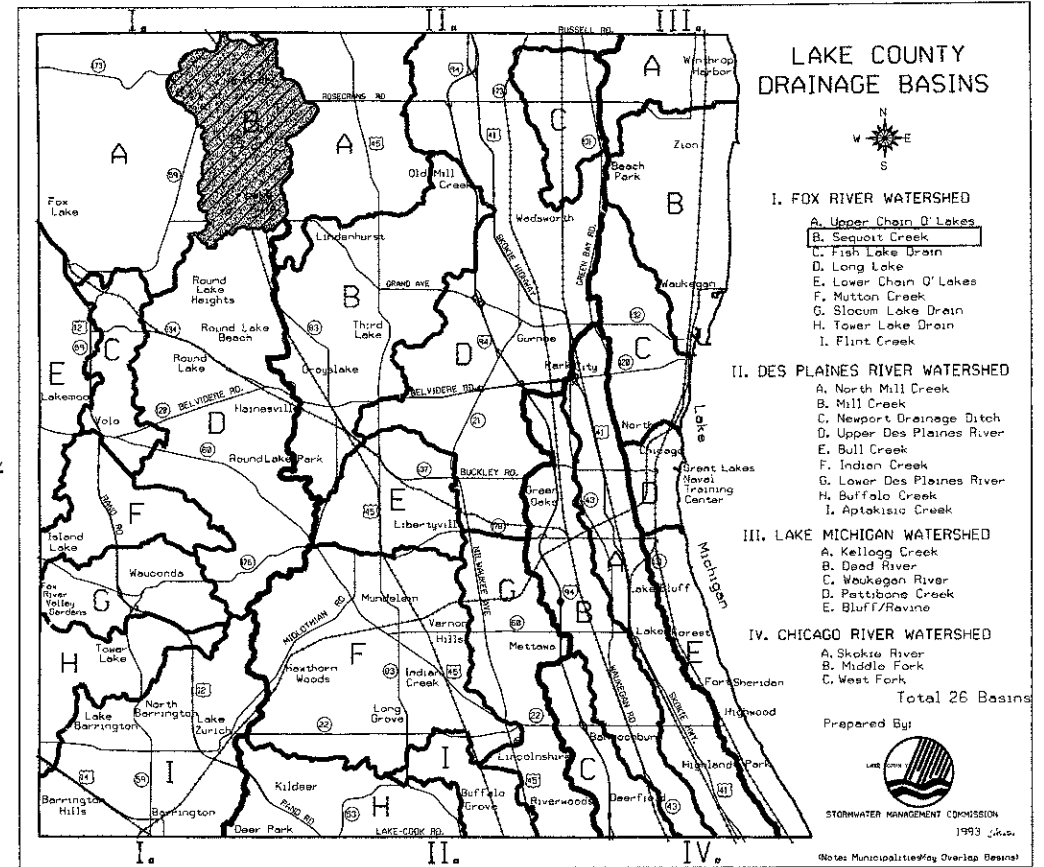
1. PERIMETER EROSION BARRIER SHALL BE INSTALLED AT LOCATIONS SPECIFIED IN PLANS AT 1 FT OUTSIDE THE TOE OF SLOPE OR INSIDE THE RIGHT-OF-WAY WHICHEVER IS CLOSER TO THE CENTERLINE, OR AS DIRECTED BY THE ENGINEER PRIOR TO THE START OF ANY EARTHWORK, CULVERT, OR STORM SEWER CONSTRUCTION.
2. THE PERIMETER EROSION BARRIER SHALL REMAIN IN PLACE UNTIL ALL DISTURBED AREAS HAVE BEEN STABILIZED WITH VEGETATION. AT THIS TIME, THE PERIMETER EROSION BARRIER SHALL BE REMOVED AND AREAS DAMAGED BY THE PERIMETER EROSION BARRIER REMOVAL SHALL BE RESTORED.
3. THE PERIMETER EROSION BARRIER INSTALLATION, MAINTENANCE, & REMOVAL ARE PAID FOR UNDER PERIMETER EROSION BARRIER. THE RESTORATION OF THE AREA DISTURBED BY THE PERIMETER EROSION REMOVAL SHALL BE INCLUDED IN THE PAY ITEM OF PERIMETER EROSION BARRIER.
4. TEMPORARY DITCH CHECKS SHALL BE SEEDDED AS SOON AS PRACTICAL AFTER CONSTRUCTION IN THAT AREA HAS CONCLUDED.
5. ALL SEEDDED AREAS SHALL BE COVERED WITH EROSION CONTROL BLANKETS.

**LAKE COUNTY STORMWATER MANAGEMENT COMMISSION  
TYPICAL CONSTRUCTION SEQUENCING**

1. INSTALLATION OF SOIL EROSION AND SEDIMENT CONTROL SE/SC MEASURES
    - a.) SELECTIVE VEGETATION REMOVAL FOR SILT FENCE INSTALLATION
    - b.) SILT FENCE INSTALLATION
  2. TREE REMOVAL WHERE NECESSARY (CLEAR & GRUB)
  3. STRIP TOPSOIL, STOCKPILE TOPSOIL AND GRADE SITE
  4. TEMPORARILY STABILIZE TOPSOIL STOCKPILES (SEED AND SILT FENCE AROUND TOE OF SLOPE)
  5. INSTALL STORM SEWER, SANITARY SEWER, WATER AND ASSOCIATED INLET & OUTLET PROTECTION
  6. TEMPORARILY STABILIZE ALL AREAS THAT HAVE REACHED TEMPORARY GRADE
  7. CONSTRUCT ROADWAY PAVEMENT AND CONCRETE CURB & GUTTER IMPROVEMENTS. MAINTAIN ALL STORM SEWER, OUTLETS, AND ASSOCIATED INLET PROTECTION DURING CONSTRUCTION.
  8. REMOVE ALL TEMPORARY SE/SC MEASURES AFTER THE SITE IS ESTABLISHED WITH OVER 70% VEGETATION
- SOIL EROSION AND SEDIMENT CONTROL MAINTENANCE MUST OCCUR EVERY TWO WEEKS AND AFTER 1/2 INCH OR GREATER RAINFALL EVENT

**EROSION CONTROL STANDARD DRAWING INDEX**

LC 4202	CONCRETE WASHOUT FACILITIES
LC 2051	PERIMETER EROSION BARRIER INSTALLATION
LC 2050	TEMPORARY DITCH CHECK INSTALLATION FOR ROADWAY OR DRAINAGE DITCH
IDOT 280001-07	TEMPORARY EROSION CONTROL SYSTEMS



SP	UNIT NO.	DESCRIPTION	QUANTITY	UNIT
	20101000	TEMPORARY FENCE	250	FOOT
*	20101100	TREE TRUNK PROTECTION	14	EACH
	28000250	TEMPORARY EROSION CONTROL SEEDING	95	POUND
*	28000305	TEMPORARY DITCH CHECKS	42	FOOT
*	28000400	PERIMETER EROSION BARRIER	463	FOOT
	28000510	INLET FILTERS	26	EACH
	28100705	STONE DUMPED RIPRAP, CLASS A3	33	SQ YD
*	28200200	FILTER FABRIC	216	SQ YD
*	X2510635	HEAVY DUTY EROSION CONTROL BLANKET, SPECIAL	122	SQ YD
*	X2800400	PERIMETER EROSION BARRIER, SPECIAL	989	FOOT
*	XX006658	FLOCCULATION LOGS	5	EACH
*	XX006659	FLOCCULATION POWDER	30	POUND

STABILIZATION TYPE	JAN.	FEB.	MAR.	APR.	MAY.	JUNE	JULY	AUG.	SEPT.	OCT.	NOV.	DEC.
PERMANENT SEEDING				A				A				
DORMANT SEEDING	N/A	N/A	N/A	N/A	N/A	N/A	N/A	N/A	N/A	N/A	N/A	N/A
TEMPORARY SEEDING	B											
SODDING												
MULCHING	N/A	N/A	N/A	N/A	N/A	N/A	N/A	N/A	N/A	N/A	N/A	N/A

A. SEEDING CLASS 2A (SEE IDOT STD. SPEC. ART. 250.07 FOR SEEDING MIXTURE)  
 B. TEMPORARY SEEDING (SEE IDOT STD. SPEC. ART. 280.04 f.)

FILE NAME = L:\LAKEDCO\1122401\Drawings\Sheet\eroc.dwg

<p><b>CMT</b> CRANFORD, MURPHY &amp; TULLY, INC. CONSULTING ENGINEERS License No. 84-000613</p>	USER NAME = Jeff Sedig DESIGNED - SJP DRAWN - SJP CHECKED - CMC DATE - 10/22/2012	REVISED - REVISED - REVISED - REVISED -	<b>STATE OF ILLINOIS DEPARTMENT OF TRANSPORTATION</b>	<b>EROSION CONTROL PLAN</b>	F.A.U. RTE. 0192 SECTION 06-00153-07-CH COUNTY LAKE TOTAL SHEETS 120 SHEET NO. 44	CONTRACT NO. 63682
	PLOT SCALE = 48,0000' / 1"	PLOT DATE = 11/12/2012			SCALE: N/A SHEET NO. 1 OF 4 SHEETS STA. N/A TO STA. N/A	