

**LEGEND:**

- STORM SEWER
- STORM SEWER TO MWID INTERCEPTOR SEWER
- STORM SEWER INLET
- STORM SEWER CATCH BASIN
- STORM SEWER MANHOLE
- SANITARY SEWER
- SANITARY SEWER MAN HOLE
- WATERMAIN

GRAPHIC SCALE  
 H. 1" = 20 ft. V. 1" = 5 ft.

STORM SEWER TRIBUTARY TO EXISTING IDOT STORM SYSTEM  
 12" RCP - 1.35'  
 24" RCP - 50'

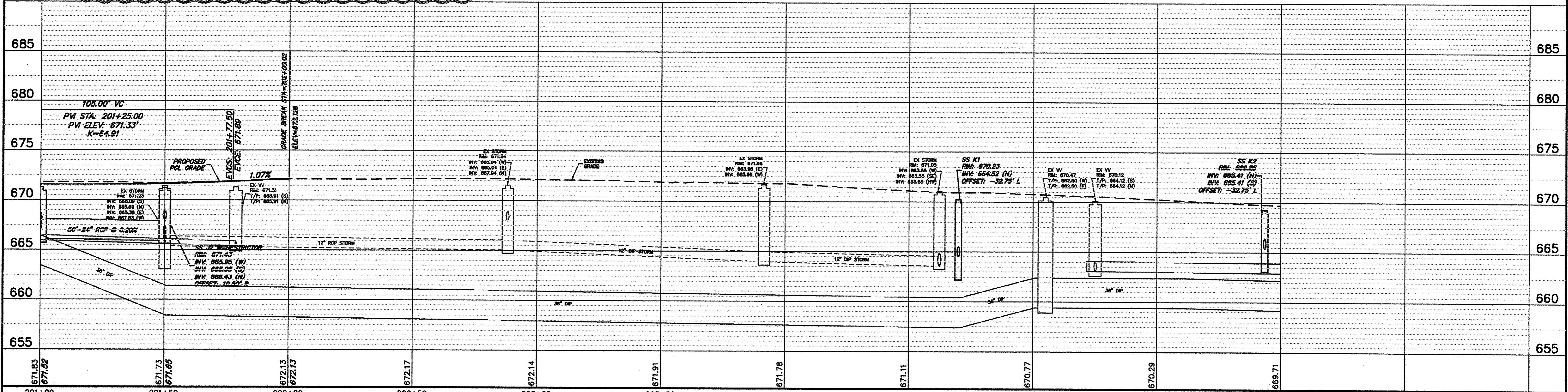
STORM STRUCTURES		
STRUCTURE #	TYPE	FRAME & GRATE
SS J1	CB TYPE C	TYPE 23 FR & GR
SS J2	MH TYPE A, 6' DIA.	TYPE 1 FR & CL (2)
SS J3	CB TYPE A, 4' DIA.	TYPE 23 FR & GR
SS J4	MH TYPE A, 4' DIA.	TYPE 1 FR & CL
SS J5	CB TYPE C	TYPE 23 FR & GR
SS K1	CB TYPE C	TYPE 23 FR & GR
SS K2	CB TYPE C	TYPE 23 FR & GR

\* MANHOLE WITH RESTRICTOR PLATE SEE DETAIL

THE GENERAL CONTRACTOR IS REQUIRED TO HIRE AN ENVIRONMENTAL FIRM WITH AT LEAST FIVE (5) DOCUMENTED LEAKING UNDERGROUND STORAGE TANK CLEANUPS OR THAT IS PRE-QUALIFIED IN HAZARDOUS WASTE BY THE DEPARTMENT TO REMEDIATE THE SOIL CONTAMINATION AND FOR WORKER PROTECTION.

ANY WASTE GENERATED AS A SPECIAL WASTE OR A WASTE NOT CERTIFIED AS A NON-SPECIAL WASTE FROM THE PROJECT SHOULD BE MANIFESTED OFF-SITE USING THE GENERATOR NUMBER ASSOCIATED WITH COOK COUNTY. THE GENERATOR NUMBER FOR COOK COUNTY IS 0318995023.

**WEST KENSINGTON ROAD**



FILE NAME = 4185.800-PR3.dwg	USER NAME = PAUL SWATEK	DESIGNED - BVS	REVISION - 12/18/12	<b>STATE OF ILLINOIS</b> <b>DEPARTMENT OF TRANSPORTATION</b>	<b>DRAINAGE AND UTILITY - PLAN AND PROFILE</b> <b>KENSINGTON ROAD IMPROVEMENTS</b>	EAU RTE	SECTION	COUNTY	TOTAL SHEETS	SHEET NO.
PLOT SCALE = 1" = .08'	CHECKED - KLB	DATE - 10/17/12	1295			09-00154-00-PV	COOK	119	52	
PLOT DATE = 12/10/12	DATE - 10/17/12	SCALE 1"=20'	SHEET NO. OF SHEETS			STA. 201+00 TO STA. 206+00	CONTRACT #:	63746	ILLINOIS FED. AID PROJECT	