

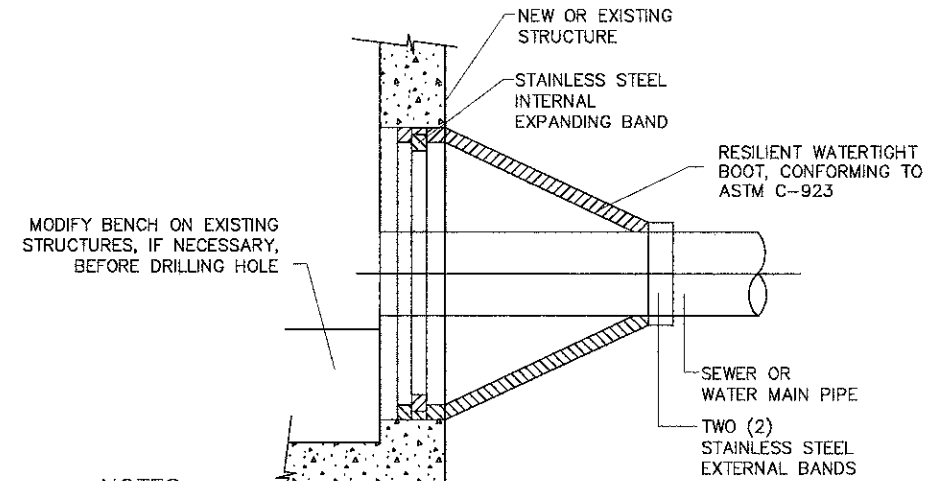
**METROPOLITAN WATER RECLAMATION DISTRICT OF GREATER CHICAGO**

**MWRD TYPICAL GENERAL NOTES**

1. THE MWRD LOCAL SEWER SYSTEMS SECTIONS FIELD OFFICE MUST BE NOTIFIED AT LEAST TWO (2) WORKING DAYS PRIOR TO THE COMMENCEMENT OF ANY WORK (CALL 708-588-4055).
2. ALL ELEVATIONS ARE BASED ON U.S.G.S. DATUM. U.S.G.S. DATUM = CHICAGO CITY DATUM +579.48
3. ALL FLOOR DRAINS SHALL DISCHARGE TO THE SANITARY SEWER SYSTEM.
4. ALL DOWNSPOUTS AND FOOTING DRAINS SHALL DISCHARGE TO THE STORM SEWER SYSTEM.
5. ALL SANITARY SEWER PIPE MATERIALS AND JOINTS (AND STORM SEWER PIPE MATERIALS AND JOINT IN COMBINED SEWER AREA) SHALL CONFORM TO:

PIPE MATERIAL SPEC.	JOINT SPEC.	PIPE MATERIAL SPEC.	JOINT SPEC.
VITRIFIED CLAY PIPE VCP C-700 VCP (NO-BELL) C-700	C-425	ABS COMPOSITE/TRUSS PIPE 8"-15" DIA. ABS D-2680	D-2680
JOINT COLLAR	C-425 D-1784	PVC GRAVITY SEWER PIPE 6"-15" DIA. SDR 26 D-3034 18"-27" DIA. F/DY=46 F-679	D-3212 OR D-2855 D-3212 OR D-2855
CONCRETE PIPE C-14 RCP C-76 ACP C-428	C-443 C-443 D-1869	CISP A-74	C-564
ABS SEWER PIPE 8"-15" DIA. ABS D-2680	D-2680	DIP A-21.51	A-21.11

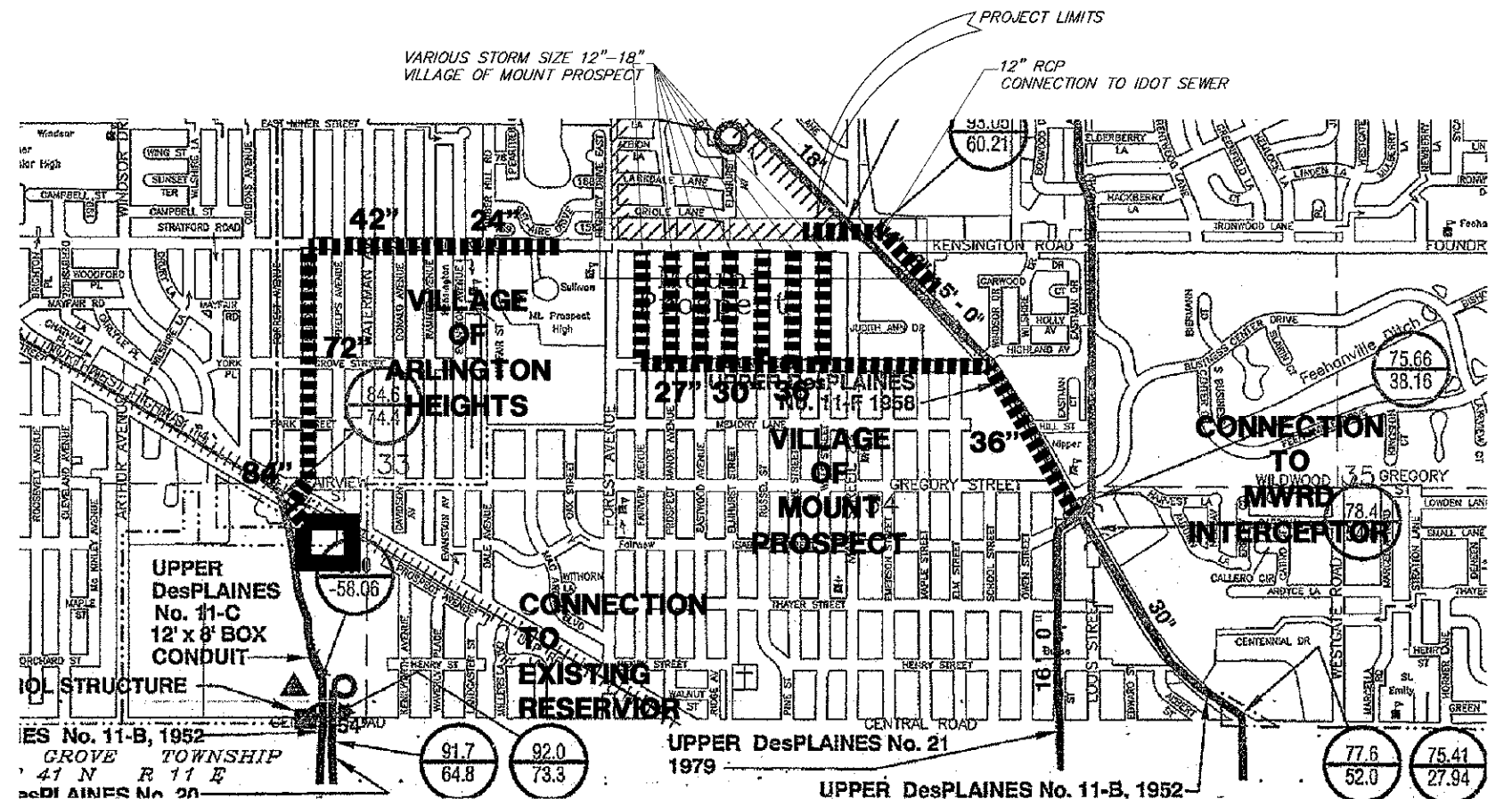
6. ALL SANITARY SEWER CONSTRUCTION (AND STORM SEWER CONSTRUCTION IN COMBINED SEWER AREAS), REQUIRES STONE BEDDING WITH STONE 1/2" TO 1" IN SIZE, WITH MINIMUM BEDDING THICKNESS EQUAL TO 1/4 THE OUTSIDE DIAMETER OF THE SEWER PIPE, BUT NOT LESS THAN FOUR (4) INCHES NOR MORE THAN EIGHT (8) INCHES. MATERIALS SHALL BE CA-11 OR CA-13 AND SHALL BE EXTENDED AT LEAST 12" ABOVE THE TOP OF THE PIPE WHEN USING PVC.
7. "BAND SEAL" OR SIMILAR FLEXIBLE-TYPE COUPLINGS SHALL BE USED IN THE CONNECTION OF SEWER PIPES OF DISSIMILAR MATERIALS.
8. WHEN CONNECTING TO AN EXISTING SEWER MAIN BY MEANS OTHER THAN AN EXISTING WYE, TEE, OR AN EXISTING MANHOLE, ONE OF THE FOLLOWING METHODS SHALL BE USED:
  - A. CIRCULAR SAW-CUT OF SEWER MAIN BY PROPER TOOLS ("SEWER-TAP" MACHINE OR SIMILAR) AND PROPER INSTALLATION OF HUB-WYE SADDLE OR HUB-TEE SADDLE.
  - B. REMOVE AN ENTIRE SECTION OF PIPE (BREAKING ONLY THE TOP OF ONE BELL) AND REPLACE WITH A WYE OR TEE BRANCH SECTION.
  - C. WITH PIPE CUTTER, NEATLY AND ACCURATELY CUT OUT DESIRED LENGTH OF PIPE FOR INSERTION OF PROPER FITTING, USING "BAND SEAL" OR SIMILAR COUPLINGS TO HOLD IT FIRMLY IN PLACE.
9. WHENEVER A SANITARY/COMBINED SEWER CROSSES UNDER A WATERMAIN, THE MINIMUM VERTICAL DISTANCE FROM THE TOP OF THE SEWER TO THE BOTTOM OF THE WATERMAIN SHALL BE 18 INCHES. FURTHERMORE, A MINIMUM HORIZONTAL DISTANCE OF 10 FEET BETWEEN SANITARY/COMBINED SEWERS AND WATERMAINS SHALL BE MAINTAINED UNLESS: THE SEWER IS LAID IN A SEPERATE TRENCH, KEEPING A MINIMUM 18" VERTICAL SEPERATION; OR THE SEWER IS LAID IN THE SAME TRENCH WITH THE WATERMAIN LOCATED AT THE OPPOSITE SIDE ON A BENCH OF UNDISTURBED EARTH, KEEPING A MINIMUM 18" VERTICAL SEPERATION. IF EITHER THE VERTICAL OR HORIZONTAL DISTANCES DESCRIBED ABOVE CAN NOT BE MAINTAINED, OR THE SEWER CROSSES ABOVE THE WATERMAIN, THE SEWER SHALL BE CONSTRUCTED TO WATERMAIN STANDARDS.
10. ALL EXISTING SEPTIC SYSTEMS SHALL BE ABANDONED. ABANDONED TANKS SHALL BE FILLED WITH GRANULAR MATERIAL OR REMOVED.
11. ALL SANITARY MANHOLES, (AND STORM MANHOLES IN COMBINED SEWER AREAS), SHALL HAVE A MINIMUM INSIDE DIAMETER OF 48 INCHES, AND SHALL BE CAST IN PLACE OR PRE-CAST REINFORCED CONCRETE.
12. WATERTIGHT FLEXIBLE RUBBER CONNECTORS, CONFORMING TO A.S.T.M. C-923 WITH STAINLESS STEEL BAND, SHALL BE PROVIDED FOR SEWER CONNECTIONS WITH GREASE BASIN AND TRIPLE BASIN.
13. EXCEPT FOR FOUNDATION/FOOTING DRAINS PROVIDED TO PROTECT BUILDINGS, DRAIN TILES/UNDERDRAINS/PERFORATED PIPES ARE NOT ALLOWED TO BE CONNECTED TO OR TO BE TRIBUTARY TO THE COMBINED SEWERS, SANITARY SEWERS, OR STORM SEWERS TRIBUTARY TO COMBINED SEWERS IN A COMBINED SEWER AREAS. CONSTRUCTION OF NEW FACILITIES OF THIS TYPE IS PROHIBITED; AND ALL EXISTING DRAIN TILES AND PERFORATED PIPES ENCOUNTERED WITHIN THE PROJECT AREA SHALL BE PLUGGED OR REMOVED, AND SHALL NOT BE CONNECTED TO COMBINED SEWERS, SANITARY SEWERS, OR STORM SEWERS TRIBUTARY TO COMBINED SEWERS.
14. ALL ABANDONED SEWERS SHALL BE PLUGGED AT BOTH ENDS WITH A MINIMUM OF TWO (2) FEET LONG NON-SHRINK CONCRETE/MORTAR PLUGS.



**NOTES:**

1. FOR CONNECTION TO EXISTING, CORE-DRILL CIRCULAR OPENING IN STRUCTURE WALL OF DIAMETER TO FIT THE REQUIRED BOOT SIZE.
2. KOR-N SEAL FLEXIBLE RUBBER BOOT INCOMPLIANCE WITH ASTM C923.
3. CUT, SHAPE AND SLOPE NEW INVERT CHANNEL IN THE EXISTING CONCRETE BENCH FOR SMOOTH FLOW FROM NEW CONNECTION.
4. CLEAN EXISTING STRUCTURE AND SEWER PIPE OF ANY DIRT, CONCRETE OR DEBRIS WHICH MAY ACCUMULATE DURING THE CONSTRUCTION PROCESS.

**PIPE CONNECTION TO STRUCTURE**



**MWRD ROUTING MAP**

SCALE 1"=1000'

FILE NAME = 4185.800-DT1.dwg

USER NAME = PAUL SWATEK

DESIGNED - BVS

REVISED -

PLOT SCALE = 1" = .0833'

DRAWN - PJS

REVISED -

PLOT DATE = 10/17/2012

CHECKED - KLB

REVISED -

DATE - 10/17/12

REVISED -

**STATE OF ILLINOIS  
DEPARTMENT OF TRANSPORTATION**

**MWRD GENERAL NOTES & DETAILS  
KENSINGTON ROAD IMPROVEMENTS**

FAU RTE	SECTION	COUNTY	TOTAL SHEETS	SHEET NO.
1295	09-00154-00-PV	COOK	119	4
CONTRACT #			63746	
ILLINOIS FED. AID PROJECT				

SCALE N.T.S. SHEET NO. OF SHEETS STA. TO STA.