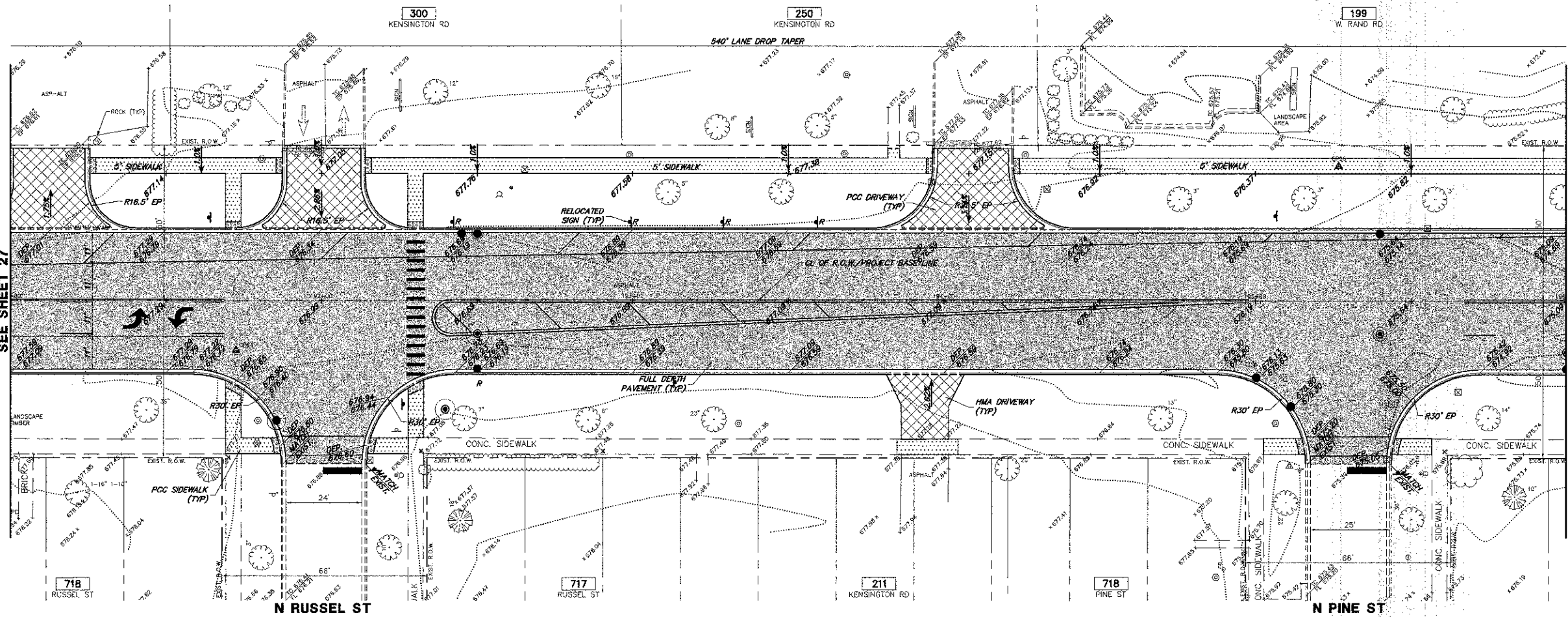


MATCH LINE STA. 191+00
SEE SHEET 27

MATCH LINE STA. 196+00
SEE SHEET 29

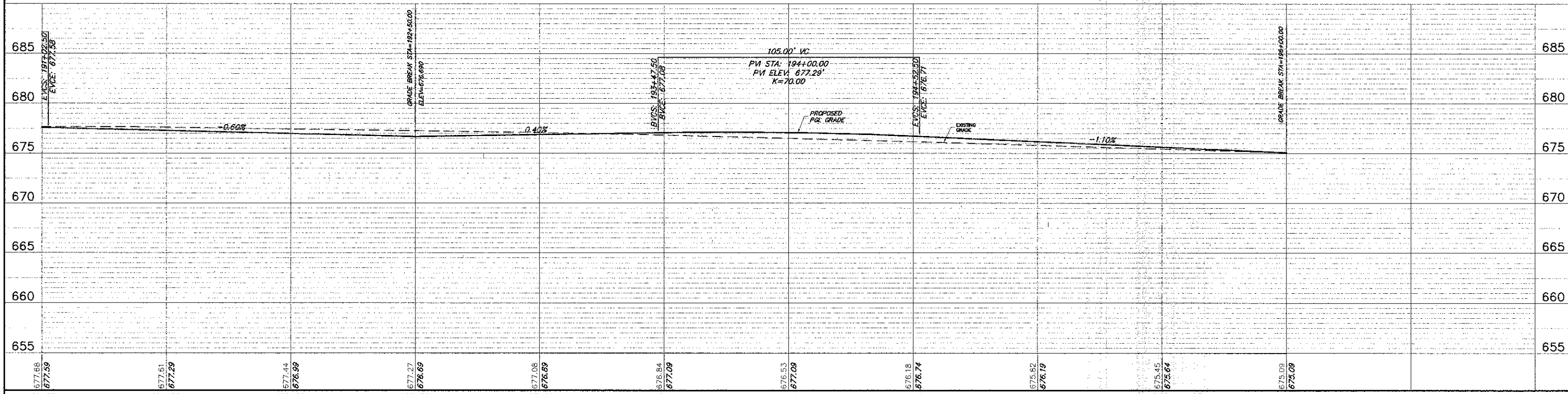


LEGEND:

- HMA PAVEMENT (SEE TYPICAL SECTION)
- HMA RESURFACING (SEE TYPICAL SECTION)
- PCC SIDEWALK (SEE TYPICAL SECTION)
- HMA BIKE PATH (SEE TYPICAL SECTION)
- PCC DRIVEWAY (SEE TYPICAL SECTION)
- HMA DRIVEWAY (SEE TYPICAL SECTION)
- PAVEMENT PATCH (SEE DETAIL)
- B6.12 CURB & GUTTER - REGULAR
- B6.12 CURB & GUTTER - DEPRESSED
- DETECTABLE WARNING
- PROPOSED SIGN
- PROPOSED MAIL BOX
- PROPOSED POWER/LIGHT POLE
- STREET ADDRESS

NOTE:
WHEN PAVEMENT WIDENING IS LESS THAN 6' WIDE,
PCC BASE COURSE 9" SHALL BE USED.

WEST KENSINGTON ROAD



FILE NAME = 4185.800-PR3.dwg	USER NAME = PAUL SWATEK	DESIGNED - BVS	REVISED -	STATE OF ILLINOIS DEPARTMENT OF TRANSPORTATION	ROADWAY PLAN & PROFILE - KENSINGTON ROAD KENSINGTON ROAD IMPROVEMENTS	FAU RYE	SECTION	COUNTY	TOTAL SHEETS	SHEET NO.
PLOT SCALE = 1" = .08'	CHECKED - KLB	REVISED -	REVISED -			1295	09-00154-00-PV	COOK	119	28
PLOT DATE = 10/17/2012	DATE - 10/17/12	REVISED -	REVISED -			SCALE: 1"=20'		SHEET NO. OF SHEETS		STA. 191+00 TO STA. 196+00