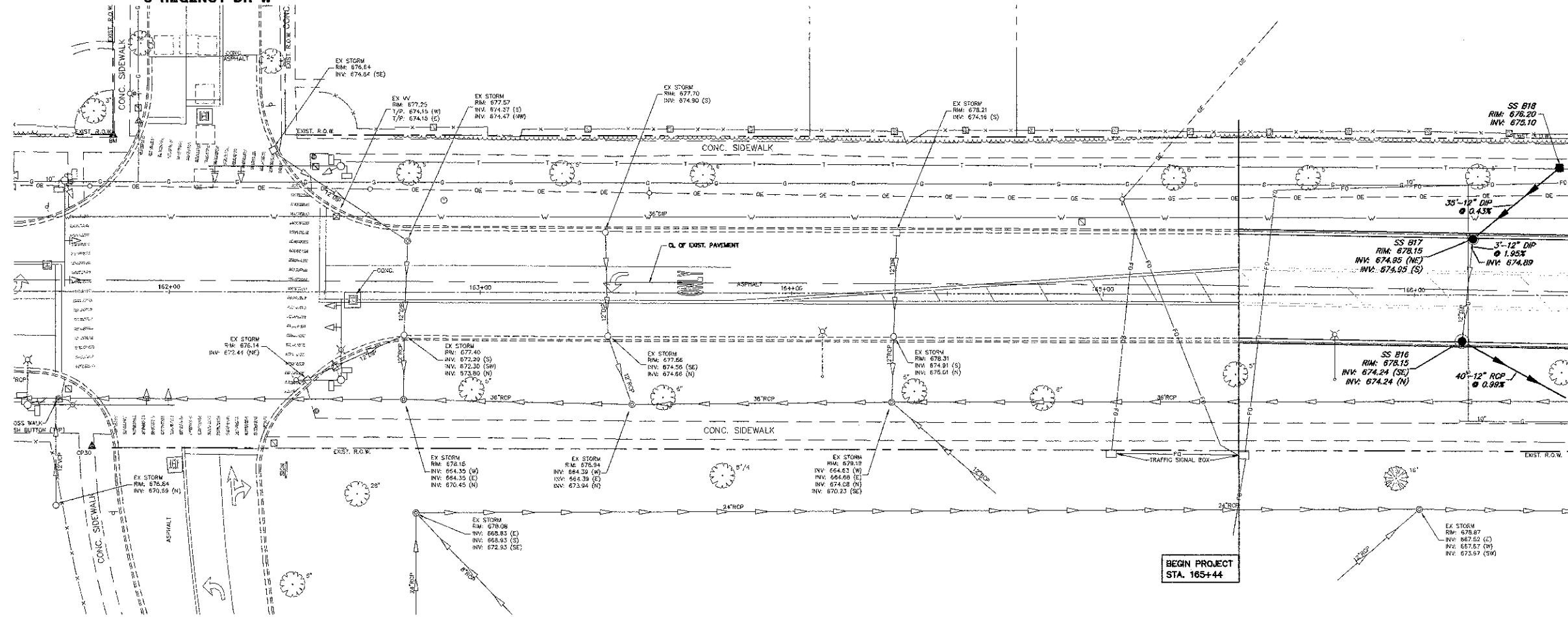
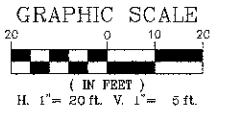


S REGENCY DR W

**LEGEND:**

- STORM SEWER
- STORM SEWER INLET
- STORM SEWER CATCH BASIN
- STORM SEWER MANHOLE
- SANITARY SEWER
- SANITARY SEWER MAN HOLE
- WATERMAIN
- VALVE VAULT

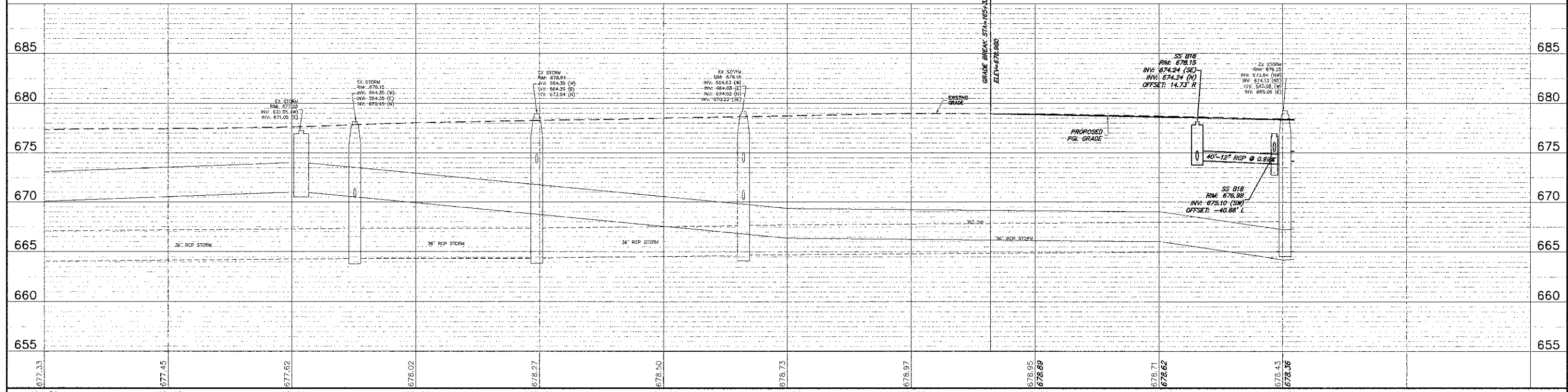


MATCH LINE STA. 166+50  
SEE SHEET 45

BEGIN PROJECT  
STA. 165+44

**WEST KENSINGTON ROAD**

STORM STRUCTURES		
STRUCTURE #	TYPE	FRAME & GRATE
SS B16	CB TYPE A, 4' DIA.	TYPE 23 FR & GR
SS B17	INLET TYPE A	TYPE 23 FR & GR
SS B18	INLET TYPE A	TYPE 8 GR



FILE NAME = 4185.900-PR3.dwg	USER NAME = PAUL SWIATEK	DESIGNED - BVS	REVISED -	<b>STATE OF ILLINOIS DEPARTMENT OF TRANSPORTATION</b>	<b>DRAINAGE AND UTILITY - PLAN AND PROFILE KENSINGTON ROAD IMPROVEMENTS</b>	FAU RATE	SECTION	COUNTY	TOTAL SHEETS	SHEET NO.	
	PLOT SCALE = 1" = .08'	DRAWN - PJS	REVISED -			1295	09-00154-00-PV	COOK	119	44	
	PLOT DATE = 10/17/2012	CHECKED - KLB	REVISED -			CONTRACT # 63746					
		DATE - 10/17/12	REVISED -			ILLINOIS FED. AID PROJECT					