

GENERAL NOTES
 UNITS SHALL BE MANUFACTURED IN ACCORDANCE WITH THE LATEST AASHTO STANDARD SPECIFICATION FOR STRUCTURAL SUPPORTS FOR HIGHWAY SIGNS, LUMINAIRES, AND TRAFFIC SIGNALS. DESIGN WIND VELOCITY SHALL BE 90 MPH WITH A MINIMUM DESIGN LIFE OF 50 YEARS.

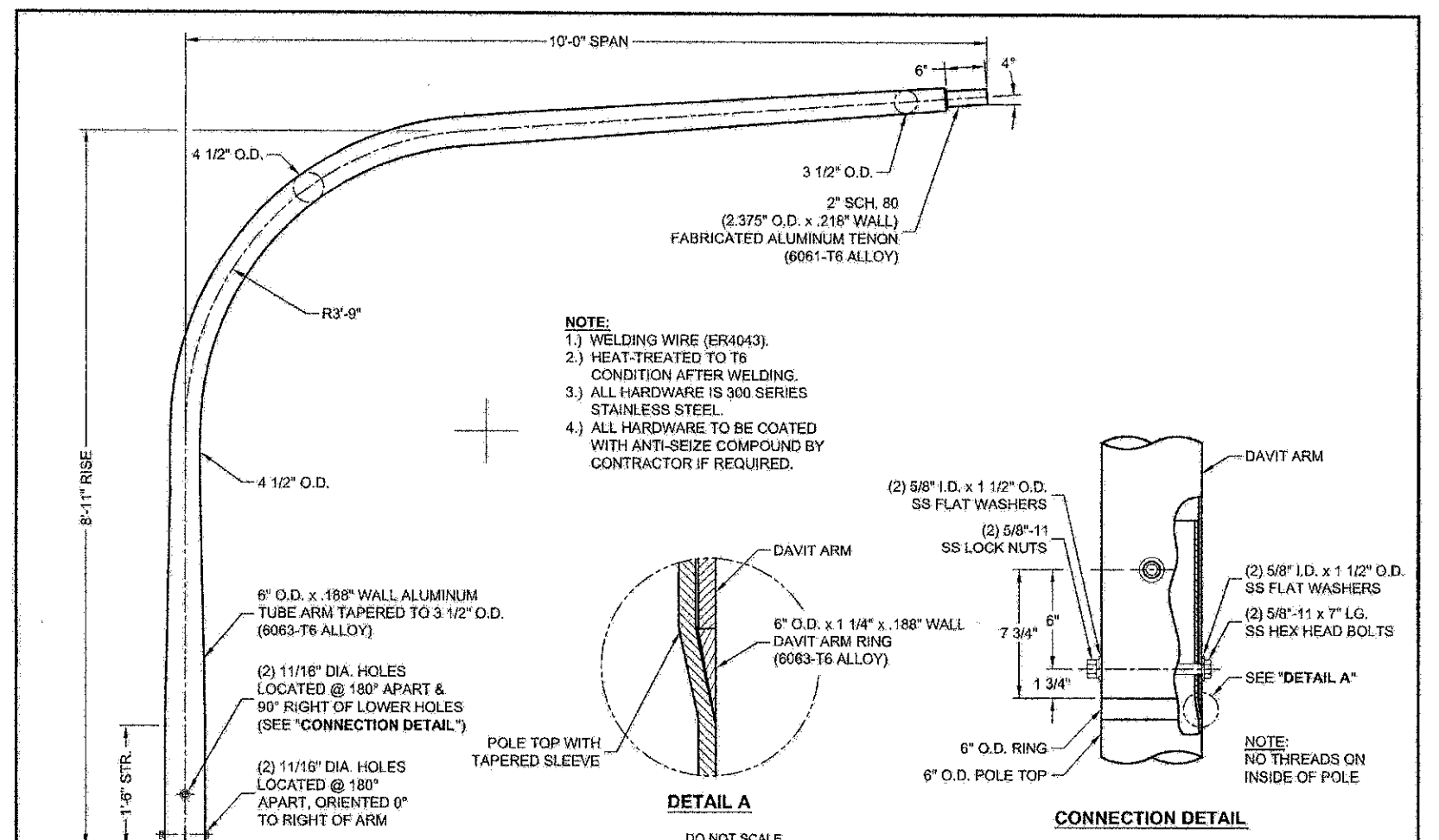
IN ADDITION TO THE AASHTO CRITERIA, THE POLES SHALL BE DESIGNED FOR THE WORST CASE LOADING CONDITION SET FORTH IN IL D.O.T. SPECIFICATION 1069.01 (a)(1) FOR A DESIGN LUMINAIRE HAVING AN EPA OF 1.6 FT² AND MAXIMUM WEIGHT OF 75 LBS

ALL HARDWARE TO BE COATED WITH ANTI-SEIZE COMPOUND BY CONTRACTOR IF REQUIRED.

NOTE: POLE Ø @ 34" UP FROM BUTT OF POLE IS 8" O.D.

NOTE: NUT COVERS NOT SHOWN

NOTE: NO THREADS ON INSIDE OF POLE



NOTE:
 1.) WELDING WIRE (ER4043).
 2.) HEAT-TREATED TO T6 CONDITION AFTER WELDING.
 3.) ALL HARDWARE IS 300 SERIES STAINLESS STEEL.
 4.) ALL HARDWARE TO BE COATED WITH ANTI-SEIZE COMPOUND BY CONTRACTOR IF REQUIRED.

valmont
 Valmont Industries, Inc. Structures Division
 20805 Eaton Ave Farmington, Minnesota 55024-7932
 Phone: (651) 463-8990 (800) 899-7577
 Fax: (651) 463-3349

TITLE: S DAVIT ARM 8'-11" x 6" x 2.4 x 10' S 3'-9"R	QTY: 1
MODEL NO.:	OWN BY: PTP
MATERIAL: ALUMINUM ALLOY	CHKD BY:
FINISH: POWDER PAINT - VALMONT BLACK DBL	APPR BY: CEW
PROJECT: MT PROSPECT	DATE: 10-09-12
SOLD TO: ERM	DWG NO: DR6297
SHIP TO:	PAGE: 2/5
P.O. NO:	
REP: LTG SOL OF IL	
REV DATE	REVISION DESCRIPTION
	BY

valmont Valmont Industries, Inc. Structures Division 20805 Eaton Ave Farmington, Minnesota 55024-7932 Phone: (651) 463-8990 (800) 899-7577 Fax: (651) 463-3349	TITLE: S ANCHOR BASE LIGHT POLE	QTY: 1
CLASSIFIED LUMINAIRE POLE WITH RESPECT TO ELECTRICAL HAZARDS ONLY NOT FOR MECHANICAL STRENGTH OR WIND LOADING 30 UTM - SUITABLE FOR WET LOCATIONS	MODEL NO.:	OWN BY: PTP
CONFIDENTIAL The information contained in this drawing is privileged and confidential, and may be protected from disclosure. Please be aware that any use or dissemination of this drawing may be subject to legal restriction or sanction.	MATERIAL: ALUMINUM ALLOY	CHKD BY:
	FINISH: POWDER PAINT - VALMONT BLACK DBL	APPR BY: CEW
	PROJECT: MT PROSPECT	DATE: 10-09-12
	SOLD TO: ERM	DWG NO: DR6297
	SHIP TO:	PAGE: 1/5
	P.O. NO:	
	REP: LTG SOL OF IL	
REV DATE	REVISION DESCRIPTION	BY

FILE NAME = 4185.800-EL1.dwg	USER NAME = PAUL SWATEK	DESIGNED - JZ	REVISED -
		DRAWN - JZ	REVISED -
		CHECKED - AJP	REVISED -
		DATE - 10/17/2012	REVISED -

STATE OF ILLINOIS DEPARTMENT OF TRANSPORTATION

LIGHTING DETAILS	
KENSINGTON ROAD IMPROVEMENTS	
SCALE: NTS	SHEET NO. L6 OF L8 SHEETS
STA. TO STA.	

FAU. RTE. 1295	SECTION 09-00154-00-PV	COUNTY COOK	TOTAL SHEETS 119	SHEET NO. 85
CONTRACT # 63746			ILLINOIS FED. AID PROJECT	