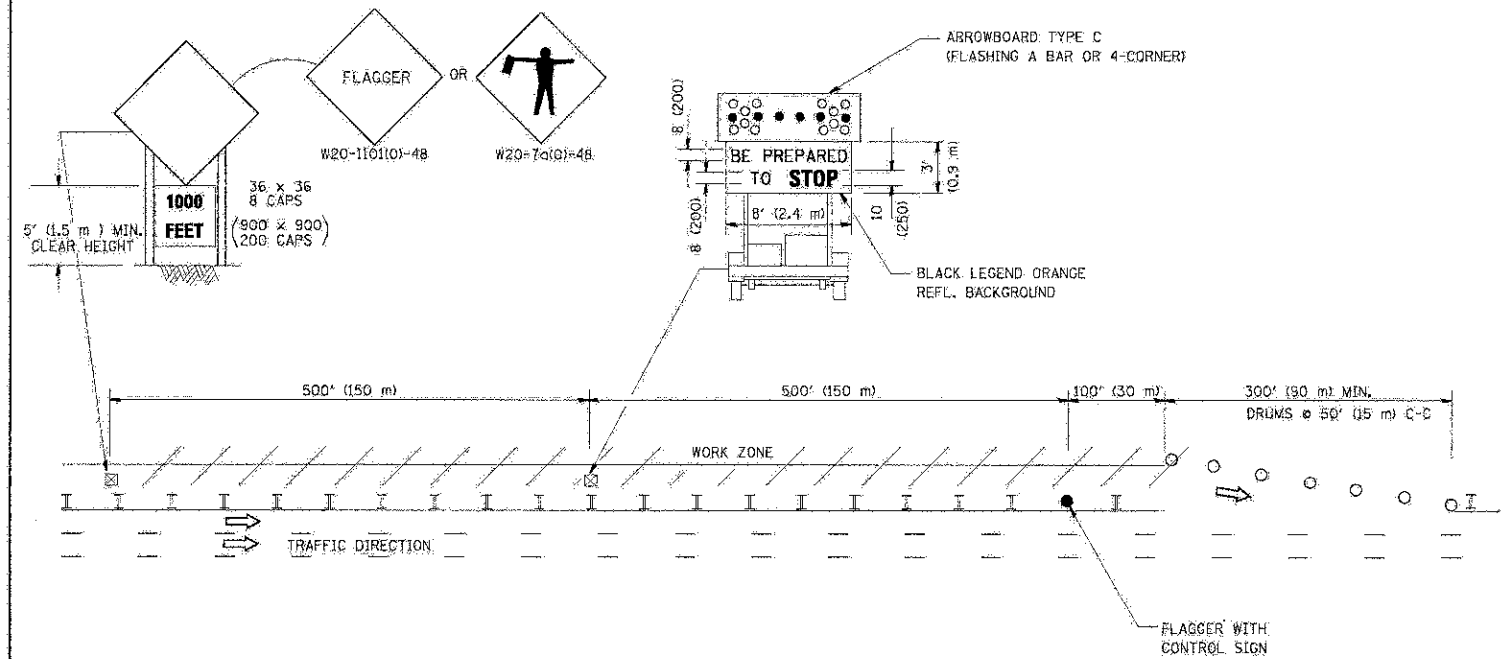
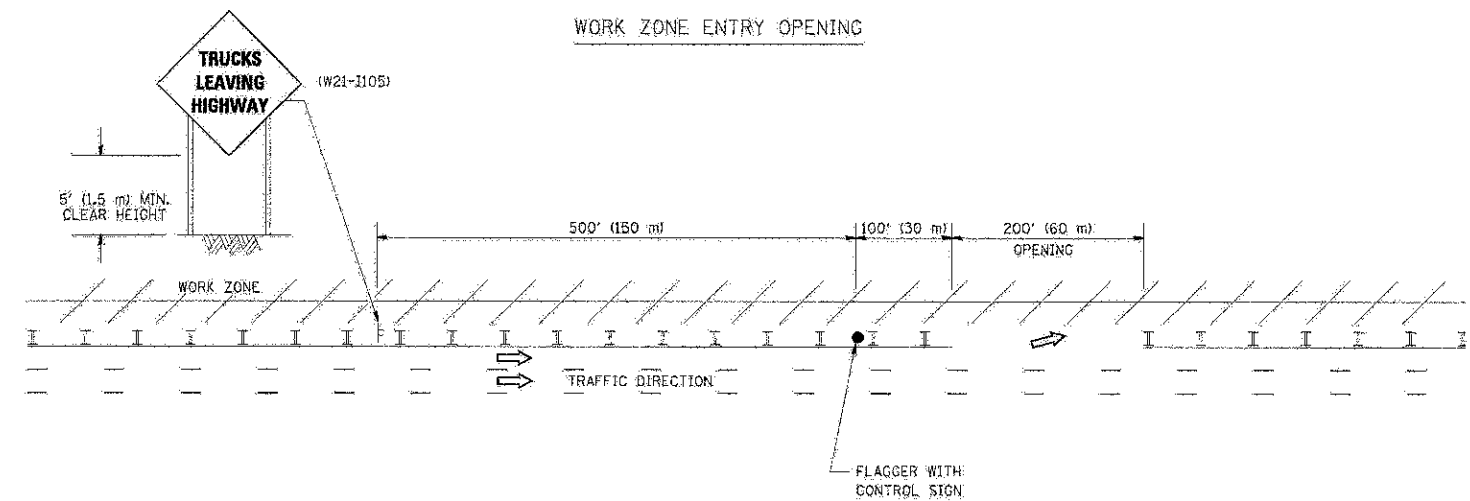


SIGNING FOR FLAGGING OPERATIONS AT WORK ZONE OPENINGS

WORK ZONE EXIT OPENING



WORK ZONE ENTRY OPENING



NOTES:

1. THE ARROWBOARD, THE FLAGGER AHEAD SIGN AND THE TRUCKS LEAVING HIGHWAY SIGN SHALL BE REMOVED OR TURNED AWAY FROM TRAFFIC AND THE EXIT AND ENTRY OPENINGS SHALL BE CLOSED WHEN THE FLAGGING OPERATION CEASES. NON-OPERATING EQUIPMENT SHALL COMPLY WITH ARTICLE 701.11
2. WORK ZONE EXIT OPENINGS SHOULD BE A MINIMUM OF ONE HALF MILE APART.
3. EXITING THE WORK ZONE AT ANY PLACE OTHER THAN AT A WORK ZONE EXIT OPENING WILL BE PROHIBITED.
4. ALL VEHICLES SHALL ENTER THE WORK ZONE AT ENTRY OPENINGS, USING THEIR TURN SIGNALS TO WARN MOTORISTS

ALL DIMENSIONS ARE IN INCHES (MILLIMETERS) UNLESS OTHERWISE SHOWN

FILE NAME = 4185.800-D11.dwg	USER NAME = lrype	DESIGNED =	REVISED = J.A.F. 04-03	STATE OF ILLINOIS DEPARTMENT OF TRANSPORTATION	SIGNING FOR FLAGGING OPERATIONS AT WORK ZONE OPENINGS	FAU RTE = 1295	SECTION = 09-00154-00-PV	COUNTY = COOK	TOTAL SHEETS = 119	SHEET NO. = 104	
	PLDT SCALE = 5/8"=1'-0"	DRAWN =	REVISED = J.A.F. 02-06			SCALE: NONE	SHEET NO. 1 OF 1 SHEETS	STA. TO STA.	TC-18		CONTRACT # = 63746
	PLDT DATE = 1/28/2010	CHECKED =	REVISED = S.P.B. 01-07			ILLINOIS FED. AID PROJECT					
		DATE =	REVISED = S.P.B. 12-09								