

WOODLAND GLEN ALIGNMENT

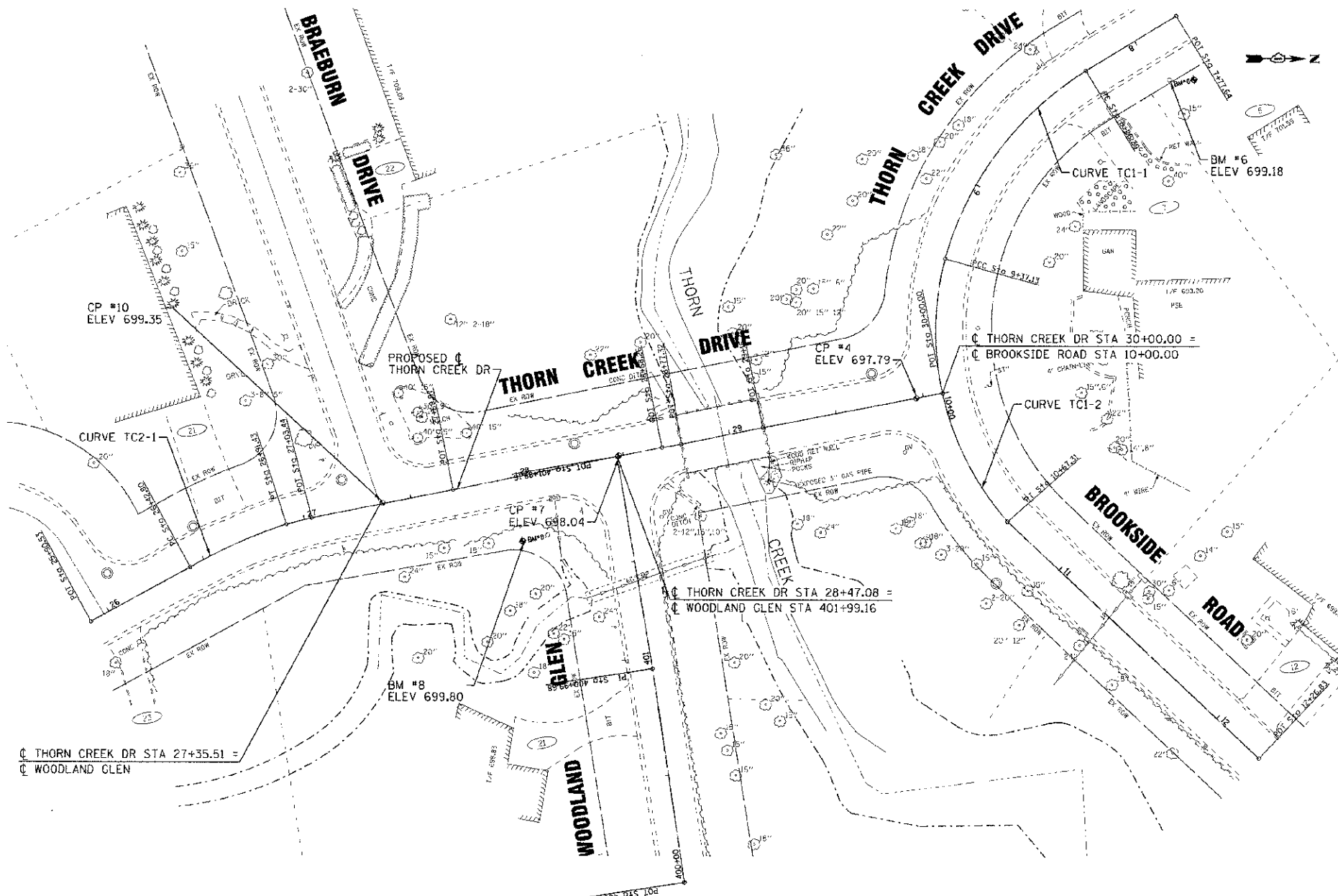
Point W1	N	1,748,805.80 E	1,162,576.37 Sta	400+00.00
Course from W1 to W2 S 81°12' 31.24" W Dist 99.68				
Point W2	N	1,748,790.56 E	1,162,477.86 Sta	400+99.68
Course from W2 to W3 S 80°15' 48.43" W Dist 99.48				
Point W3	N	1,748,773.74 E	1,162,379.81 Sta	401+99.16

THORN CREEK DRIVE ALIGNMENT

Point 100006	N	1,748,531.33 E	1,162,456.53 Sta	25+90.53
Course from 100006 to PC TC2-1 N 28°54' 54.95" W Dist 52.27				
Curve Data				
Curve TC2-1				
P.I. Station	26+67.21 N	1,748,598.12 E	1,162,418.88	
Delta	12°22' 12.13" (RT)			
Degree	25°26' 06.93"			
Tangent	24.41			
Length	48.63			
Radius	225.26			
External	1.32			
Long Chord	48.54			
Mid. Ord.	1.31			
P.C. Station	26+42.80 N	1,748,577.08 E	1,162,431.26	
P.T. Station	26+91.43 N	1,748,621.32 E	1,162,411.29	
C.C.	N 174°05' 17.48" E 1,748,691.34 E 1,162,625.39			
Back	= N 30°28' 43.70" W			
Ahead	= N 18°06' 31.57" W			
Chord Bear	= N 24°17' 37.63" W			
Course from PT TC2-1 to 100007 N 14°27' 17.66" W Dist 12.01				
Point 100007	N	1,748,632.95 E	1,162,408.29 Sta	27+03.44
Course from 100007 to 100008 N 11°16' 39.81" W Dist 66.43				
Point 100008	N	1,748,698.10 E	1,162,395.30 Sta	27+69.87
Course from 100008 to 100009 N 11°34' 19.28" W Dist 98.39				
Point 100009	N	1,748,794.49 E	1,162,375.56 Sta	28+68.26
Course from 100009 to 100010 N 9°58' 33.70" W Dist 9.06				
Point 100010	N	1,748,803.41 E	1,162,374.00 Sta	28+77.32
Course from 100010 to 100011 N 11°41' 53.07" W Dist 38.38				
Point 100011	N	1,748,840.99 E	1,162,366.21 Sta	29+15.70
Course from 100011 to 100012 N 11°05' 23.36" W Dist 84.30				
Point 100012	N	1,748,923.72 E	1,162,350.00 Sta	30+00.00

BROOKSIDE ROAD ALIGNMENT

Point 100002	N	1,749,030.79 E	1,162,175.33 Sta	7+77.64
Course from 100002 to PC TC1-1 S 31°29' 42.19" E Dist 48.65				
Curve Data				
Curve TC1-1				
P.I. Station	8+84.37 N	1,748,940.21 E	1,162,231.75	
Delta	42°15' 16.06" (LT)			
Degree	38°07' 20.73"			
Tangent	58.08			
Length	110.84			
Radius	150.29			
External	10.83			
Long Chord	108.34			
Mid. Ord.	10.10			
P.C. Station	8+26.29 N	1,748,989.32 E	1,162,200.75	
P.T. Station	9+37.13 N	1,748,924.70 E	1,162,287.72	
C.C.	N 174°05' 17.48" E 1,749,069.54 E 1,162,327.84			
Back	= S 32°15' 47.20" E			
Ahead	= S 74°31' 03.27" E			
Chord Bear	= S 53°23' 25.23" E			
Course from PT TC1-2 to 100003 N 43°08' 51.99" E Dist 159.52				
Point 100003	N	1,749,070.40 E	1,162,518.40 Sta	12+26.83



COPYRIGHT © 2012 BY BAXTER & WOODMAN, INC.
 STATE OF ILLINOIS - PROFESSIONAL ENGINEER
 LICENSE NO. 08-00027 - EXPIRES 4/30/2013
 10/15/2012 3:58:00 PM



DESIGNED	- CAC	REVISED	-
DRAWN	- BCO	REVISED	-
CHECKED	- TAD	REVISED	-
DATE	- 10/12/12	FILE	- 080286-Align.sht

**VILLAGE OF PARK FOREST, ILLINOIS
THORN CREEK DRIVE
OVER THORN CREEK**

ALIGNMENT

SCALE: 1"=30'
STA. TO STA.

MUN. DIST.	SECTION	COUNTY	TOTAL SHEETS	SHEET NO.
1045	08-00093-00-BR	WILL	41	9
FED. ROAD DIST. NO. 1 ILLINOIS FED. AID PROJECT			CONTRACT NO. 63755	
			BRM-9003(03)	