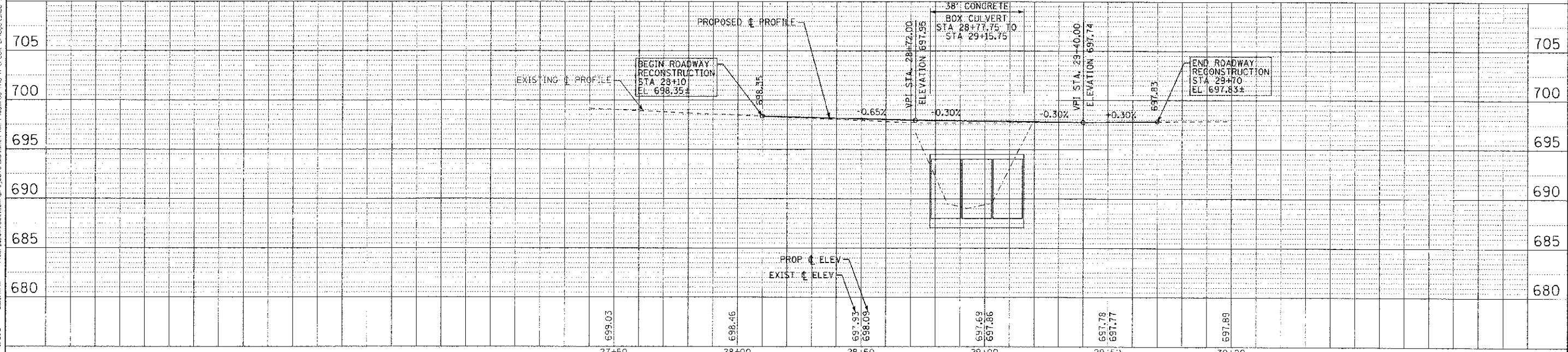
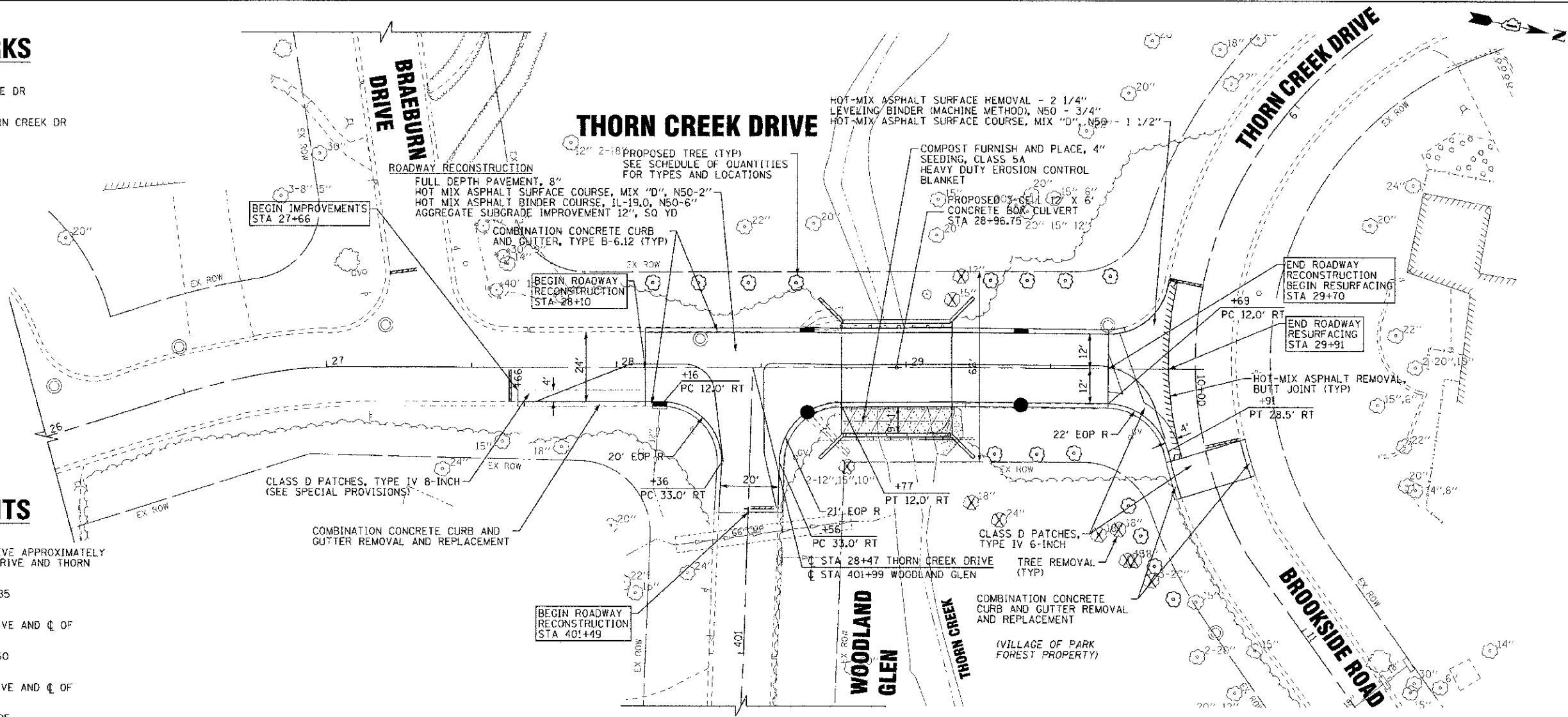


BENCHMARKS

- BM #6 STA 7+96, 27.4' LT
N BOLT FH @ 7 W BROOKSIDE DR
EL 699.18 (DATUM NAVD 88)
- BM #8 NW BOLT FH @ SE COR THORN CREEK DR
& WOODLAND GLEN DR
STA 28+09, 29.1' RT
EL 699.80 (DATUM NAVD 88)

CONTROL POINTS

- CP #4 PK NAIL SET @ THORN CREEK DRIVE APPROXIMATELY 10' SOUTH OF @ OF BROOKSIDE DRIVE AND THORN CREEK DRIVE.
STA 29+88, 0.09' RT
N 1748911.635773 E 1162352.452285
ELEV. 697.79 (DATUM NAVD 88)
- CP #7 PK NAIL SET @ THORN CREEK DRIVE AND @ OF WOODLAND GLEN.
STA 28+48, 0.24' LT
N 1748774.461815 E 1162379.421560
ELEV. 698.04 (DATUM NAVD 88)
- CP #10 PK NAIL SET @ THORN CREEK DRIVE AND @ OF BRAEBURN DRIVE.
STA 27+37, 0.40' LT
N 1748665.557139 E 1162401.383325
ELEV. 699.35 (DATUM NAVD 88)



CONTRACT NO. 08-00053-00-BR
 SHEET NO. 41 OF 10
 DATE: 10/28/2010
 PROJECT: VILLAGE OF PARK FOREST, ILLINOIS
 THORN CREEK DRIVE OVER THORN CREEK
 DRAWN BY: BCD
 CHECKED BY: TAO
 DESIGNED BY: CAC
 REVISIONS:
 REVISION NO. 1: 10/12/12
 FILE: 08C286-PP1.dwt



DESIGNED - CAC	REVISED -
DRAWN - BCD	REVISED -
CHECKED - TAO	REVISED -
DATE - 10/12/12	FILE - 08C286-PP1.dwt

VILLAGE OF PARK FOREST, ILLINOIS THORN CREEK DRIVE OVER THORN CREEK

PLAN AND PROFILE

SCALE: H: 1"=20' V: 1"=5'
STA. 26+00 TO STA. 30+00

MUN. ST. 1045	SECTION 08-00053-00-BR	COUNTY WILL.	TOTAL SHEETS 41	SHEET NO. 10
CONTRACT NO. 63755			BRM-90031035	