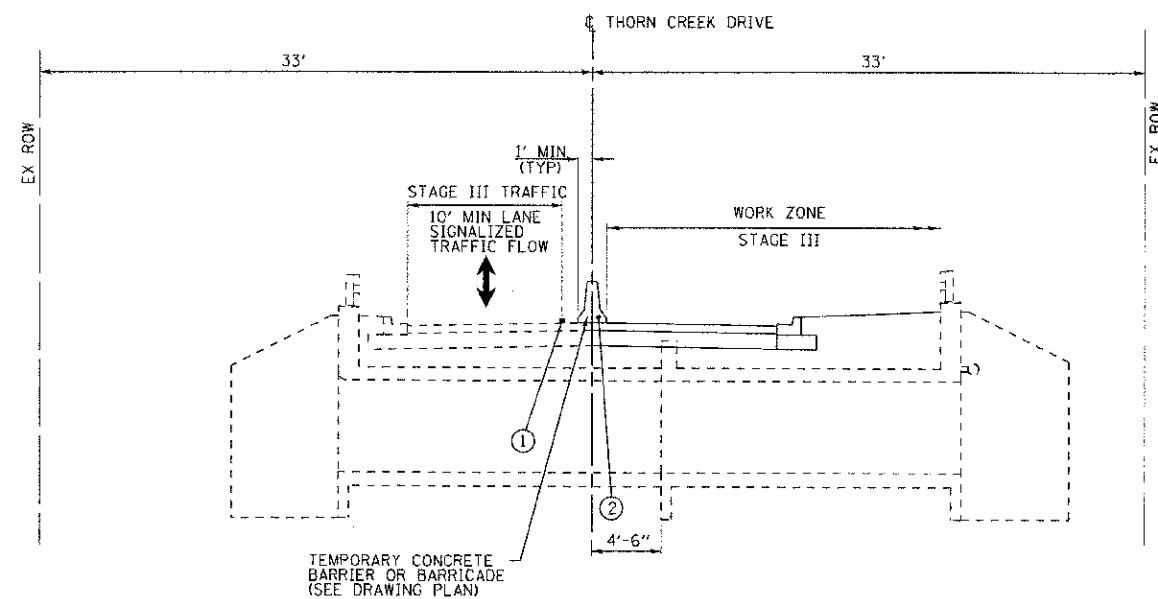
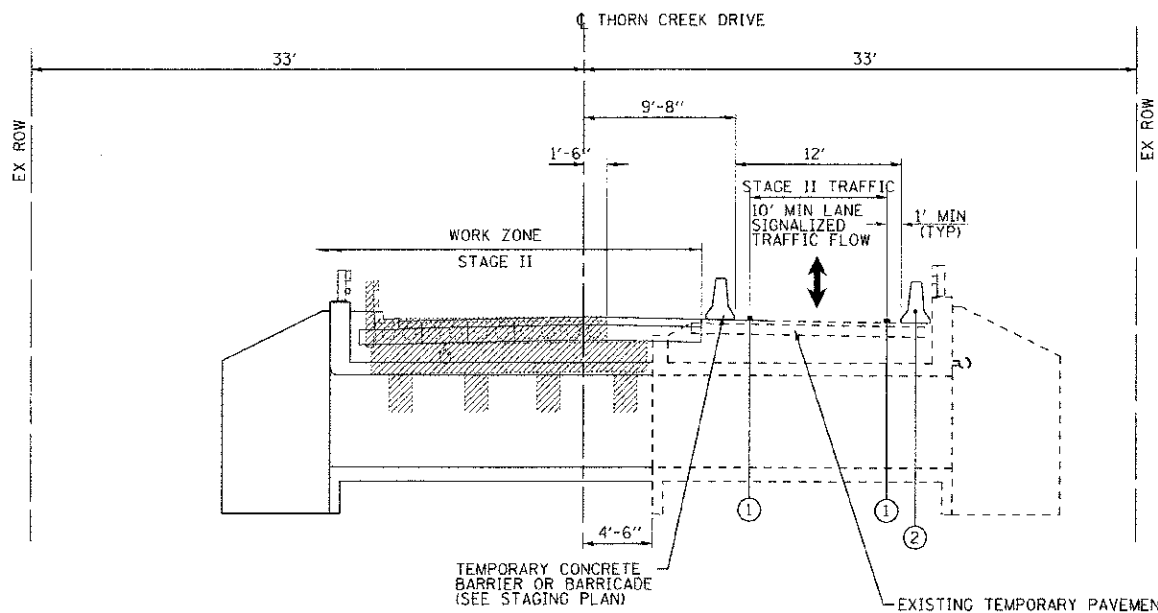


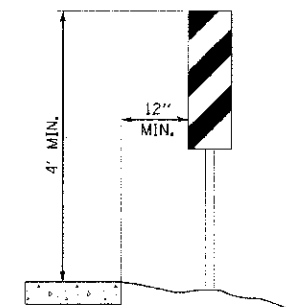
STAGE I - THORN CREEK DRIVE



STAGE III - THORN CREEK DRIVE



STAGE II - THORN CREEK DRIVE



VERTICAL PANELS

LEGEND

- ① TEMPORARY PAVEMENT MARKING - LINE 4"
- ② TEMPORARY CONCRETE BARRIER (SEE NOTE 1)
- ③ TEMPORARY PAVEMENT, 3"
(A) HOT-MIX ASPHALT SURFACE COURSE, MIX "D", N50
(B) AGGREGATE SUBGRADE IMPROVEMENT 8"
- ④ AGGREGATE SHOULDERS, TYPE B - 6" (SEE NOTE 2)
- ↑ DIRECTION OF TRAFFIC
- - - EXISTING ELEMENT
- PROPOSED ELEMENT
- ▨ STAGE REMOVAL ITEMS

NOTES:

1. TEMPORARY CONCRETE BARRIER SHALL BE ANCHORED TO BRIDGE DECK DURING STAGE I AND ANCHORED TO PAVEMENT DURING STAGE II.
2. A 3' AGGREGATE SHOULDER, TYPE B-6" TO BE CONSTRUCTED ADJACENT TO THE TEMPORARY PAVEMENT OUTSIDE OF THE CULVERT AREA ON THORN CREEK DRIVE. (SEE SUGGESTED MAINTENANCE OF TRAFFIC PLANS).

08/12/12
 1045
 08-00093-00-BR
 WILL
 41
 12
 CONTRACT NO. 63755
 BRN-9003103



DESIGNED - CAC	REVISED -
DRAWN - BCD	REVISED -
CHECKED - TAO	REVISED -
DATE - 10/12/12	FILE - 080286-MotTypd.shp

**VILLAGE OF PARK FOREST, ILLINOIS
THORN CREEK DRIVE
OVER THORN CREEK**

**SUGGESTED STAGES OF CONSTRUCTION
AND TRAFFIC CONTROL**

SCALE: 1"=20' STA. TO STA.

M/JN ST	SECTION	COUNTY	TOTAL SHEET NO.
1045	08-00093-00-BR	WILL	41 12
FED. ROAD DIST. NO. 1 ILLINOIS FED. AID PROJECT			CONTRACT NO. 63755
			BRN-9003103