

PIPES				
NO.	TYPE	LENGTH (LF)	DIA (IN)	SLOPE
P-1	SANITARY SEWER DUCTILE IRON 8 INCH	35	8	0.50%
P-2	SANITARY SEWER DUCTILE IRON 8 INCH	156	8	0.50%
P-3	STORM SEWERS, CLASS A, TYPE 2 12"	30	12	5.00%
P-4	STORM SEWERS, CLASS A, TYPE 2 12"	15	12	1.00%
P-5	STORM SEWERS, CLASS A, TYPE 2 12"	26	12	5.00%
P-6	STORM SEWERS, CLASS A, TYPE 2 12"	26	12	1.00%

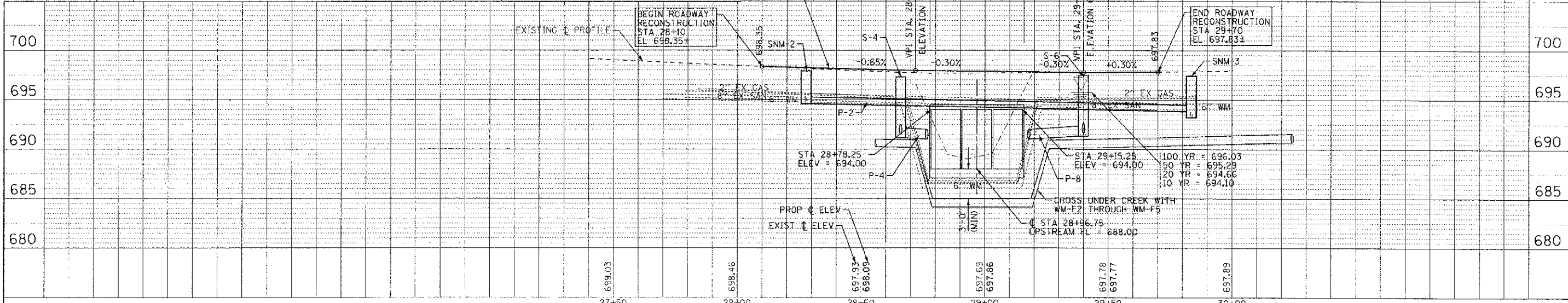
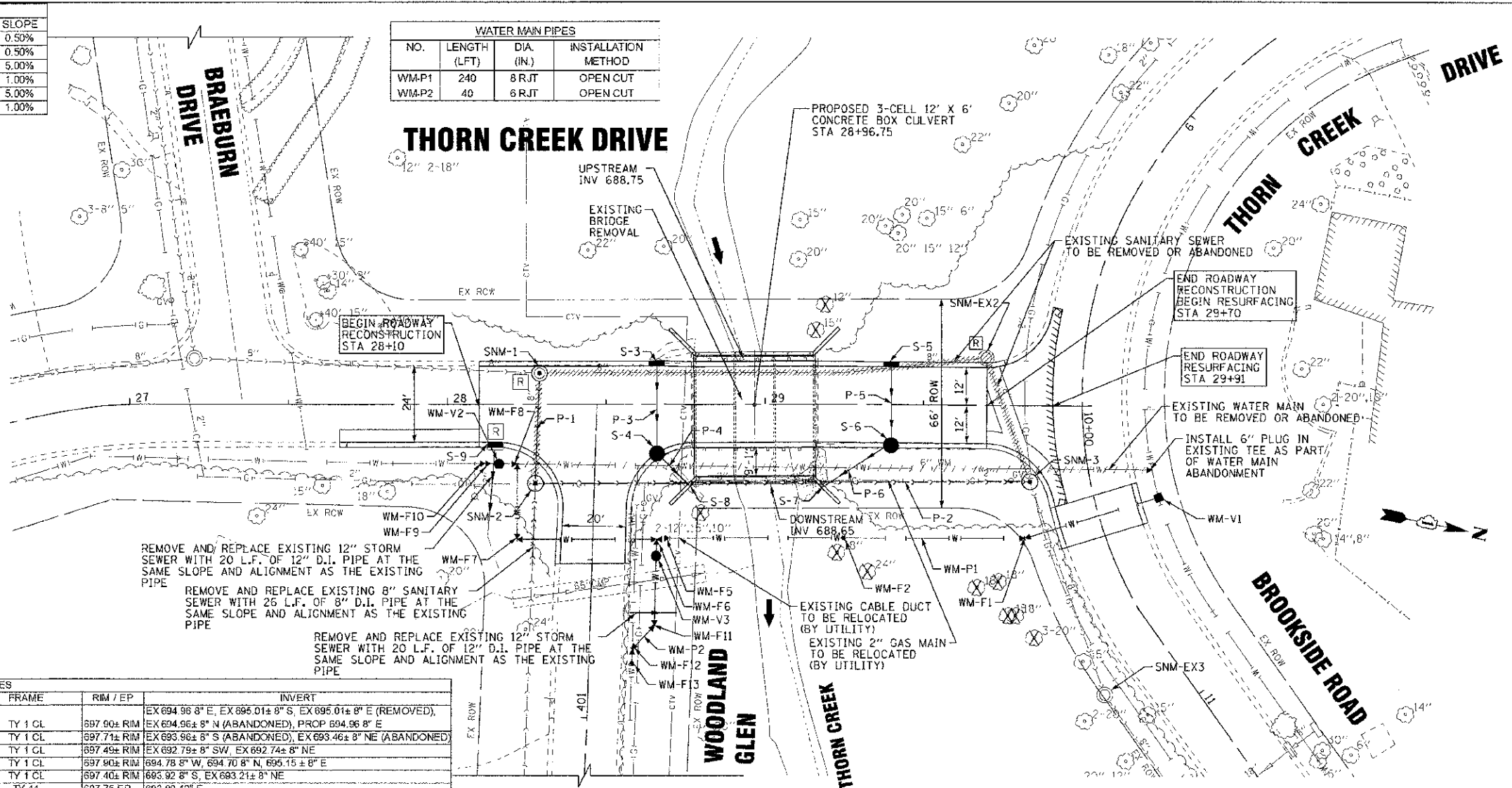
WATER MAIN PIPES			
NO.	LENGTH (LFT)	DIA (IN.)	INSTALLATION METHOD
WM-P1	240	8 RJT	OPEN CUT
WM-P2	40	6 RJT	OPEN CUT

WATER MAIN APPURTENANCES			
NO.	STATION	OFFSET	DESCRIPTION
WM-V1			PRESSURE CONNECTION TO EXISTING WATER MAIN - 8" x 8" TAPPING SLEEVE WITH 8" TAPPING VALVE AND VALVE BOX
WM-F1	10+25	20'L	D.I. RJT 8" 22-1/2° BEND
WM-F2	29+82	42'R	D.I. RJT 8" 45° BEND - ROLLED DOWN
WM-F3	29+24	42'R	D.I. RJT 8" 45° BEND - ROLLED UP
WM-F4			D.I. RJT 8" 45° BEND - ROLLED UP
WM-F5	28+71	42'R	D.I. RJT 8" 45° BEND - ROLLED DOWN
WM-F6	28+66	42'R	D.I. RJT 8" x 6" TEE
WM-F7	28+22	42'R	D.I. RJT 8" 90° BEND
WM-F8	28+22	19'R	D.I. RJT 8" 90° BEND WITH CONCRETE THRUST BLOCK
WM-V2	28+16	19'R	8" GATE VALVE WITH VALVE BOX
WM-F9	28+14	19'R	D.I. RJT 8" x 6" REDUCER
WM-F10	28+12	19'R	D.I. RJT 6" SLEEVE
WM-V3	28+66	48'R	8" GATE VALVE WITH VALVE BOX
WM-F11	28+66	70'R	D.I. RJT 6" 45° BEND
WM-F12	28+58	77'R	D.I. RJT 6" 45° BEND WITH CONCRETE THRUST BLOCK
WM-F13	28+58	81'R	D.I. RJT 6" SLEEVE

NOTES:

1. DETERMINE FINAL LOCATION OF SNM-2 AND SNM-3 AFTER SANITARY SEWER HAS BEEN INSTALLED ON EAST SIDE OF BRIDGE AND THROUGH WINGWALLS.
2. ALL NEW SANITARY SEWER PIPE, BOTH UNDERGROUND AND EXPOSED ON THE BRIDGE, IS TO INCLUDE PIPE INSULATION.
3. MAINTAIN BYPASS PUMPING EQUIPMENT AND OPERATION DURING THE INSTALLATION OF THE THREE NEW MANHOLES, PROVIDE A TEMPORARY PIPE CONNECTION IN SNM-3 TO MINIMIZE BYPASS PUMPING REQUIREMENTS.
4. ANTICIPATED SIZE OF EXISTING WATER MAIN ALONG BROOKSIDE DRIVE IS AN 8" D.I. WATER MAIN. LOCATE AND EXPOSE EXISTING WATER MAIN AND DETERMINE SIZE AND PIPE MATERIAL PRIOR TO CONSTRUCTION.

STRUCTURES						
NO.	STATION	OFFSET	TYPE	FRAME	RIM / EP	INVERT
SNM-1	28+29.00	10' LT	EXISTING SANITARY MANHOLE (REMOVED AND REPLACED)	TY 1 CL	697.90± RIM	EX 694.96 8" E, EX 695.01± 8" S, EX 695.01± 8" E (REMOVED), EX 694.96± 8" N (ABANDONED), PROP 694.96 8" E
SNM-EX2	29+69.80	15' LT	EXISTING SANITARY MANHOLE (REMOVED)	TY 1 CL	697.71± RIM	EX 693.96± 8" S (ABANDONED), EX 693.46± 8" NE (ABANDONED)
SNM-EX3	30+06.80	91' RT	EXISTING SANITARY MANHOLE (IN PARKWAY)	TY 1 CL	697.49± RIM	EX 692.78± 8" SW, EX 692.74± 8" NE
SNM-2	28+27.67	25' RT	SANITARY MANHOLE, TYPE A, 4' (BUILD OVER EXISTING)	TY 1 CL	697.90± RIM	694.78 8" W, 694.70 8" N, 695.15± 8" E
SNM-3	29+83.50	24' RT	SANITARY MANHOLE, TYPE A, 4' (BUILD OVER EXISTING)	TY 1 CL	697.40± RIM	695.92 8" S, EX 693.21± 8" NE
S-3	28+66.00	12' LT	INLET, TYPE A	TY 11	697.75 EP	693.00 12" E
S-4	28+66.00	16' RT	CATCH BASIN, TYPE A, 4'	TY 11	697.75 EP	691.50 12" W, 691.15 12" NE
S-5	29+40.00	12' LT	INLET, TYPE A	TY 11	697.44 EP	693.00 12" E
S-6	29+40.00	12' RT	CATCH BASIN, TYPE A, 4'	TY 11	697.44 EP	691.50 12" W, 691.28 12" SE
S-7	29+17.75	26.5' RT	OUTLET			691.00 12" SW
S-8	28+76.50	25.75' RT	OUTLET			691.00 12" NW
S-9	28+15.00	12' RT	INLET, TYPE A	TY 11	697.84 EP	EX 695.75 12" E, PROP 695.75 12" E



COPYRIGHT © 2012 BY BAXTER & WOODMAN, INC.
 ALL RIGHTS RESERVED. NO PART OF THIS DOCUMENT IS TO BE REPRODUCED OR TRANSMITTED IN ANY FORM OR BY ANY MEANS, ELECTRONIC OR MECHANICAL, INCLUDING PHOTOCOPYING, RECORDING, OR BY ANY INFORMATION STORAGE AND RETRIEVAL SYSTEM.
 LICENSE NO. 10-000217, EXPIRES 7/30/2013
 505-515-8100
 10/18/2012



DESIGNED - CAC	REVISED -
DRAWN - BCD	REVISED -
CHECKED - TAO	REVISED -
DATE - 10/12/12	FILE - 080286-DU1.sit

VILLAGE OF PARK FOREST, ILLINOIS
THORN CREEK DRIVE
OVER THORN CREEK

DRAINAGE AND UTILITY

SCALE: H: 1"=20' V: 1"=5'
 STA. 26+00 TO STA. 30+00

MUN. ST.	SECTION	COUNTY	TOTAL SHEETS	SHEET NO.
1045	08-00093-00 BR	WILL	41	17
FED. ROAD DIST. NO. 1 (ILLINOIS) FED. AID PROJECT			CONTRACT NO. 63755	
			BRN-90630303	