

WATER MAIN GENERAL NOTES

1. THE LOCATIONS OF EXISTING UNDERGROUND FACILITIES SHOWN ON THE DRAWINGS ARE BASED ON INFORMATION PROVIDED BY OWNERS OF THE FACILITIES AND ARE NOT NECESSARILY COMPLETE OR ACCURATE.
2. SIZES OF EXISTING WATER MAINS WERE DETERMINED FROM VILLAGE OF GLENVIEW WATER MAIN ATLAS AND PLANS, AND MAY NOT REPRESENT ACTUAL WATER MAINS SIZES. CONTRACTOR, AND LINE STOP AND WATER MAIN TAPPING SUBCONTRACTORS, SHALL HAVE AN ADEQUATE NUMBER OF FITTINGS, LINE STOPS, TAPPING SLEEVES AND TAPPING VALVES AVAILABLE TO COMPLETE WORK WITHOUT DELAYS DUE TO VARYING WATER MAIN PIPE SIZES.
3. PROTECT EXISTING UNDERGROUND UTILITIES AND BUILDING SERVICE LINES FROM DAMAGE. MAKE EXPLORATIONS AS NECESSARY TO DETERMINE THE EXACT LOCATIONS OF EXISTING UTILITIES. EXERCISE CARE DURING THE PROGRESS OF WORK TO PREVENT DAMAGE TO EXISTING UNDERGROUND FACILITIES.
4. COORDINATE WITH UTILITY COMPANIES TO SUPPORT, PROTECT, OR REMOVE AND REPLACE ALL POLES OR POLE ANCHORS AFFECTED BY CONSTRUCTION, EVEN WHERE SUPPORT IS NOT INDICATED ON THE DRAWINGS. COST OF THIS WORK SHALL BE INCIDENTAL TO CONSTRUCTION.
5. COVER ALL NEW FIRE HYDRANTS WITH BLACK PLASTIC BAGS AFTER INSTALLATION AND UNTIL NEW WATER MAIN IS IN SERVICE.
6. THE WATER MAIN PAY ITEM INCLUDES LABOR, MATERIAL, INCLUDING ALL FITTINGS (BENDS, WYES, TEES, MEGALUGS, REDUCERS, PLUGS, SLEEVES, ETC.) PIPE, REQUIRED WATER MAIN ADJUSTMENTS DUE TO UTILITY CROSSINGS, POLYETHYLENE ENCASEMENT, THRUST BLOCKS, TRACING CABLES, BEDDING, AGGREGATE TRENCH BACKFILL, PRESSURE AND LEAKAGE TESTING, CHLORINATION, AND EQUIPMENT REQUIRED FOR A COMPLETE AND OPERATIONAL INSTALLATION, INCLUDING THE NECESSARY CUTTING, PLUGGING AND REMOVAL OF EXISTING WATER MAINS TO BE ABANDONED, CROSSING UNDER EXISTING UTILITIES, ALL EXCAVATION, REMOVAL AND DISPOSAL OFF-SITE OF EXCAVATED MATERIAL.

MWRD GENERAL NOTES -- APPLIES TO WORK ON MWRD FACILITIES

1. THE MWRD LOCAL SEWER SYSTEM SECTION FIELD OFFICE MUST BE NOTIFIED AT LEAST TWO (2) WORKING DAYS PRIOR TO THE COMMENCEMENT OF ANY WORK ON MWRD FACILITIES, INCLUDING MANHOLES AND PIPES (CALL 708-588-4055).
2. ELEVATION DATUM IS USGS
3. ALL FLOOR DRAINS SHALL DISCHARGE TO THE SANITARY SEWER SYSTEM.
4. ALL DOWNSPOUTS AND FOOTING DRAINS SHALL DISCHARGE TO THE STORM SEWER SYSTEM.
5. ALL SANITARY SEWER PIPE MATERIALS AND JOINTS SHALL CONFORM TO:
PIPE MATERIAL SPEC: DHP A-21.51
JOINT SPEC: A-21.11
6. ALL SANITARY SEWER CONSTRUCTION REQUIRES STONE BEDDING WITH STONE 1/4" TO 1" IN SIZE, WITH MINIMUM BEDDING THICKNESS EQUAL TO 1/4 THE OUTSIDE DIAMETER OF THE SEWER PIPE, BUT NOT LESS THAN FOUR (4) INCHES NOR MORE THAN EIGHT (8) INCHES. MATERIAL SHALL BE CA-11 OR CA-13 AND SHALL BE EXTENDED AT LEAST 12" ABOVE THE TOP OF THE PIPE WHEN USING PVC.
7. "BAND SEAL" OR SIMILAR FLEXIBLE-TYPE COUPLINGS SHALL BE USED IN THE CONNECTION OF SEWER PIPES OF DISSIMILAR MATERIALS
8. WHEN CONNECTING TO AN EXISTING SEWER MAIN BY MEANS OTHER THAN AN EXISTING WYE, TEE, OR AN EXISTING MANHOLE, ONE OF THE FOLLOWING METHODS SHALL BE USED:
 1. CIRCULAR SAW-CUT OF SEWER MAIN BY PROPER TOOLS ("SEWER-TAP" MACHINE OR SIMILAR) AND PROPER INSTALLATION OF HUB-WYE SADDLE OR HUB-TEE SADDLE.
 2. REMOVE AN ENTIRE SECTION OF PIPE (BREAKING ONLY THE TOP OF ONE BELL) AND REPLACE WITH A WYE OR TEE BRANCH SECTION.
 3. WITH PIPE CUTTER, NEATLY AND ACCURATELY CUT OUT DESIRED LENGTH OF PIPE FOR INSERTION OF PROPER FITTING, USING "BAND SEAL" OR SIMILAR COUPLINGS TO HOLD IT FIRMLY IN PLACE.
9. SEE DETAIL U-21 ON SHT 80 FOR WATERMAIN CROSSING REQUIREMENTS
10. ALL SANITARY MANHOLES (AND STORM MANHOLES IN COMBINED SEWER AREAS) SHALL HAVE A MINIMUM INSIDE DIAMETER OF 48 INCHES, AND SHALL BE CAST IN PLACE OR PRE-CAST REINFORCED CONCRETE.
11. THE MINIMUM SLOPE FOR 8" SANITARY SEWER SERVICE PIPES SHALL BE 1.0%, OR MATCH EXISTING (TO BE REPLACED) SEWER SERVICE SLOPE. PIPE MATERIAL: PVC-SDR 26, ASTM D2241.
12. EXISTING SANITARY SEWER TO BE ABANDONED REQUIRES A 2' LONG NON-SHRINK CONCRETE OR MORTAR PLUG.
13. ALL DISTRICT SEWERS MUST BE LOCATED PRIOR TO THE START OF CONSTRUCTION. DURING CONSTRUCTION ALL CONSTRUCTION ACTIVITY WITHIN THE VICINITY OF THE DISTRICT SEWERS SHALL BE CLOSELY MONITORED. THE CONTRACTOR SHALL VACUUM/HAND EXCAVATE IF LESS THAN TWO FEET OF VERTICAL DISTANCE IS ENCOUNTERED FROM DISTRICT SEWERS OR STRUCTURES. VIBRATION MUST BE LIMITED NEAR THE DISTRICT SEWER. ALL ACCESS/HATCH MANHOLE COVERS ON DISTRICT STRUCTURES WITHIN PROJECT LIMIT SHALL NOT BE BURIED / COVERED. NO DEBRIS SHALL ENTER THE DISTRICT FACILITIES AT ANY TIME. DISTRICT PERSONEL SHALL HAVE ACCESS TO DISTRICT FACILITIES AT ALL TIMES.

GENERAL NOTES

1. ALL CONSTRUCTION SHALL BE DONE IN ACCORDANCE WITH THE DETAILS IN THE PLANS, THE SPECIAL PROVISIONS INCLUDED IN THE CONTRACT DOCUMENTS, AND THE LATEST EDITION OF THE FOLLOWING STATE OF ILLINOIS SPECIFICATIONS: "THE STANDARD SPECIFICATIONS FOR ROAD AND BRIDGE CONSTRUCTION" (REFERRED TO AS THE "STANDARD SPECIFICATIONS"), THE "SUPPLEMENTAL SPECIFICATIONS AND RECURRING SPECIAL PROVISIONS", THE "MANUAL ON UNIFORM TRAFFIC CONTROL DEVICES FOR STREETS AND HIGHWAYS", THE "MANUAL OF TEST PROCEDURES FOR MATERIALS" AND THE "STANDARD SPECIFICATIONS FOR WATER AND SEWER MAIN CONSTRUCTION IN ILLINOIS".
2. THE LOCATIONS OF PUBLIC OR PRIVATE UTILITIES SHOWN ON THE PLANS ARE APPROXIMATE AND THE ENGINEER DOES NOT GUARANTEE THEIR ACCURACY. THE CONTRACTOR SHALL HAVE THE RESPECTIVE UTILITY COMPANIES FIELD LOCATE ALL THEIR FACILITIES PRIOR TO BEGINNING CONSTRUCTION. THE CONTRACTOR SHALL BE RESPONSIBLE FOR THE PROTECTION OF ALL UNDERGROUND OR SURFACE UTILITIES, INCLUDING SPRINKLER SYSTEMS, EVEN THOUGH THEY MAY NOT BE SHOWN ON THE PLANS.
3. THE CONTRACTOR MAY OBTAIN MUNICIPAL WATER IN BULK, AT NO CHARGE, AS LONG AS THERE IS NOT A "WATERING BAN" IN EFFECT. THE INDISCRIMINATE USE OF FIRE HYDRANTS IS STRICTLY PROHIBITED. WATER FOR CONSTRUCTION SHALL BE METERED OR OTHERWISE ACCOUNTED FOR AND A DAILY LOG MAINTAINED. THE CONTRACTOR SHALL PROVIDE THE WATER TRUCK AND DRIVER REQUIRED TO OBTAIN AND TRANSPORT THIS WATER. THE VILLAGE RESERVES THE RIGHT TO RESTRICT OR REFUSE THE USE OF VILLAGE WATER IF DEEMED NECESSARY. A DEPOSIT IS REQUIRED FOR A WATER METER.
4. IT WILL BE THE CONTRACTOR'S RESPONSIBILITY TO NOTIFY BUSINESSES AND THE ENGINEER WHEN ACCESS TO THEIR DRIVEWAYS WILL BE TEMPORARILY CLOSED DUE TO CURB AND GUTTER AND/OR DRIVEWAY REPLACEMENT. EVERY EFFORT SHALL BE MADE TO ACCOMMODATE ACCESS TO THESE PROPERTIES. THE CONTRACTOR SHALL PROVIDE AT LEAST 72 HOURS NOTICE TO BUSINESSES BEFORE CLOSING DRIVEWAYS.
5. THE CONTRACTOR SHALL PROTECT AND CAREFULLY PRESERVE ALL SECTION OR SUBSECTION MONUMENTS OR PROPERTY OR REFERENCE MARKERS UNTIL THE OWNERS, HIS AGENT OR AN AUTHORIZED SURVEYOR HAS WITNESSED OR OTHERWISE REFERENCED THEIR LOCATIONS.
6. ACCESS TO DRIVEWAYS SHALL BE PROVIDED AT ALL TIMES EXCEPT DURING ACTUAL CONSTRUCTION ADJACENT THERE TO. TEMPORARY RAMPS SHALL BE CONSTRUCTED AS NEEDED TO PROVIDE SUCH ACCESS, UTILIZING CRUSHED STONE OR CRUSHED GRAVEL AS TEMPORARY ACCESS.
7. EXISTING PAVEMENT, DRIVEWAY PAVEMENT, CURB AND GUTTER AND SIDEWALK TO REMAIN IN PLACE SHALL BE SAW CUT FULL DEPTH TO PROVIDE A NEAT VERTICAL FACE BETWEEN THE PROPOSED AND EXISTING AND SHALL BE INCLUDED IN THE PRICE OF THE APPROPRIATE REMOVAL PAY ITEM.
8. CURB AND GUTTER SHALL BE DEPRESSED AT DRIVEWAYS AND SIDEWALK RAMPS IN ACCORDANCE WITH THE IDOT HIGHWAY STANDARDS. SIDEWALK RAMPS FOR ACCESS FOR THE DISABLED SHALL BE PROVIDED AT THE PROPOSED CROSSWALKS IN ACCORDANCE WITH THE IDOT HIGHWAY STANDARDS OR AS DETERMINED BY THE ENGINEER.
9. PORTLAND CEMENT CONCRETE SIDEWALK SHALL BE THICKENED TO 8-INCHES AT LOCATIONS WHERE THE SIDEWALK CROSSES COMMERCIAL DRIVEWAYS.
10. A 1/2-INCH THICK EXPANSION JOINT SHALL BE PROVIDED AT THE JUNCTION OF THE DRIVEWAY APRON AND CURB, AND AT THE JUNCTION OF THE DRIVEWAY APRON AND THE SIDEWALK. THIS WORK WILL BE INCLUDED IN THE COST OF PORTLAND CEMENT CONCRETE DRIVEWAY PAVEMENT.
11. PRIOR TO CONSTRUCTION OF ANY PROPOSED UTILITIES, THE CONTRACTOR SHALL EXCAVATE AND LOCATE THE EXISTING UTILITIES TO VERIFY THEIR LOCATION, SIZE, AND DEPTH TO INSURE THAT GRADE CONFLICTS WILL NOT OCCUR. THE COST OF THIS EXPLORATION SHALL BE PAID FOR AS EXPLORATION TRENCH, SPECIAL.
12. CONNECTION OF PROPOSED STORM SEWER INTO EXISTING STORM SEWER OR EXISTING STORM SEWER STRUCTURES SHALL BE INCLUDED IN THE COST OF STORM SEWERS.
13. CONNECTION OF EXISTING STORM SEWER INTO PROPOSED STORM SEWER STRUCTURES SHALL BE INCLUDED IN THE COST OF THE STORM SEWER STRUCTURE. ANY ADDITIONAL STORM SEWER PIPE REQUIRED TO MAKE THE CONNECTION SHALL BE OF THE SAME SIZE AND MATERIAL TYPE AS THE EXISTING STORM SEWER AND SHALL BE INCLUDED IN THE COST OF THE STORM SEWER STRUCTURE.
14. IF ANY STORM SEWER LATERALS ARE FOUND DURING CONSTRUCTION AND ARE NOT IDENTIFIED ON THE PLANS, THEY SHALL BE CONNECTED TO THE PROPOSED STORM SEWER SYSTEM AND INCLUDED IN THE COST OF THE STORM SEWER CONSTRUCTION.
15. STORM STRUCTURE OFFSET LOCATIONS ARE TO THE EDGE OF PAVEMENT IF THE STRUCTURE IS IN THE CURB LINE OR TO THE CENTER OF STRUCTURE IF THE STRUCTURE IS NOT IN THE CURBLINE.
16. FRAME ELEVATIONS GIVEN ON THE PLANS ARE ONLY TO ASSIST THE CONTRACTOR IN DETERMINING THE APPROXIMATE OVERALL HEIGHT OF THE STRUCTURE. FRAMES ON ALL NEW STRUCTURES SHALL BE ADJUSTED TO THE FINAL ELEVATION OF THE AREA IN WHICH THEY ARE LOCATED AS PART OF COST OF THE STRUCTURE.
17. ALL CRACKS AND JOINTS SHALL BE CLEANED PRIOR TO FILLING THEM. THIS WORK SHALL BE INCLUDED IN THE ITEM "MIXTURE FOR CRACKS, JOINTS AND FLANGWAYS."

18. DETECTABLE WARNINGS SHALL BE CONSTRUCTED WITH THE INSTALLATION OF A REPLACEABLE CAST-IN-PLACE POLYMER COMPOSITE PANEL, 24"x48" NOMINAL PANEL WIDTH AS MANUFACTURED BY "ADA SOLUTIONS, INC." OR "ARMOR CAST PRODUCT COMPANY" OR AN APPROVED EQUAL. THE PANEL SHALL COMPLY WITH ADA REQUIREMENTS. THE DOMES LOCATED ON THE PANEL SHALL PARALLEL THE PAVEMENT CROSS WALK WITH THE CLOSEST EDGE LOCATED AT THE BACK OF CURB. THE PANEL COLOR SHALL BE BRICK RED UNLESS OTHERWISE APPROVED BY THE ENGINEER. INSTALLATION SHALL OCCUR IN ACCORDANCE WITH THE MANUFACTURERS RECOMMENDATIONS.
19. PIPE UNDERDRAIN CONSTRUCTION AT THE LOCATIONS SHOWN ON THE PLANS OR AS DIRECTED BY THE ENGINEER SHALL INCLUDE EXCAVATION; CONNECTIONS TO EXISTING OR PROPOSED STORM PIPES, DRAINAGE STRUCTURES, OR PIPE DRAINS; GEOTECHNICAL FABRIC SOCK; AND CA-11 TRENCH BACKFILL TO THE BOTTOM OF THE HOT-MIX ASPHALT OR PCC BASE COURSE.
20. IN-LINE CONNECTIONS OF PROPOSED STORM SEWER TO EXISTING STORM SEWER TO REMAIN SHALL BE MADE WITH A NON-SHEAR "BAND-SEAL" OR APPROVED EQUAL FLEXIBLE TYPE COUPLING. THIS WORK SHALL BE INCLUDED IN THE PROPOSED STORM SEWER.
21. PER VILLAGE OF GLENVIEW ORDINANCE, THE CONTRACTOR SHALL BE REQUIRED TO CONFINED THE WORK ACTIVITY BETWEEN 7:00 AM-7:00 PM MONDAY THROUGH FRIDAY, 9:00 AM-5:00 PM SATURDAYS. WORK ON SATURDAYS SHALL BE COORDINATED AND APPROVED IN WRITING BY THE ENGINEER AT LEAST 48 HOURS IN ADVANCE. NO WORK WILL BE PERMITTED ON HOLIDAYS WITHOUT THE ENGINEER'S WRITTEN APPROVAL. WORK ACTIVITY, AS INTENDED HEREIN, INCLUDES WARMING/STARTING UP/IDLING OF ANY MACHINERY OR ENGINES.
22. ALL SAW CUTTING REQUIRED TO COMPLETE THE PROPOSED UTILITY WORK SHALL BE INCLUDED IN THE COST OF PROPOSED UTILITY WORK.
23. THE CONTRACTOR SHALL ENSURE THAT ALL WATER SYSTEM VALVES, VALVE VAULTS, AND SANITARY SEWER MANHOLES REMAIN READILY ACCESSIBLE TO THE VILLAGE FOR EMERGENCY OPERATIONS. THE LOCATION OF ALL WATER AND SANITARY FACILITIES SHALL BE MARKED AND READILY VISIBLE AT ALL TIMES.
24. ANY LOOSE MATERIAL DEPOSITED IN THE FLOW LINE OF DRAINAGE STRUCTURES, WHICH OBSTRUCTS THE NATURAL FLOW OF WATER SHALL BE REMOVED AT THE CLOSE OF EACH WORKING DAY. ALL DRAINAGE AND SANITARY STRUCTURES SHALL BE FREE OF DIRT AND DEBRIS.
25. THE MWRD LOCAL SEWER SYSTEM SECTION FIELD OFFICE MUST BE NOTIFIED AT LEAST TWO (2) WORKING DAYS PRIOR TO THE COMMENCEMENT OF ANY WORK ON MWRD FACILITIES, INCLUDING MANHOLES AND PIPES (CALL 708-588-4055). SEE THE MWRD NOTES FOR OTHER INFORMATION.
26. VILLAGE OF GLENVIEW PUBLIC WORKS DEPARTMENT (847) 657-3030
VILLAGE OF GLENVIEW CAPITAL PROJECTS DEPARTMENT (847) 998-9500
27. ONLY VILLAGE OF GLENVIEW PUBLIC WORKS DEPARTMENT STAFF SHALL OPERATE WATER VALVES. COORDINATE SHUTDOWNS WITH THE ENGINEER. SEE WATER MAIN GENERAL NOTES FOR OTHER INFORMATION.
28. CLASS B STORM SEWER SHALL BE PVC SDR 26 OR APPROVED EQUAL MEETING ARTICLE 1040.03(a) OF THE STANDARD SPECIFICATIONS.
29. AGGREGATE BASE COURSE, TYPE B - 4" SHALL BE INSTALLED UNDER ALL DRIVEWAY PAVEMENTS CONSTRUCTED ACCORDING TO IDOT DISTRICT ONE DETAIL B3-01. THE AGGREGATE BASE COURSE, TYPE B - 4" WILL BE PAID FOR SEPARATELY.
30. THE RESIDENT ENGINEER SHALL CONTACT WALTER CZARNY, AREA FIELD TRAFFIC ENGINEER AT 847-715-8419 AT LEAST 2 WEEKS PRIOR TO PLACING PERMANENT PAVEMENT MARKINGS.
31. THE CONTRACTOR SHALL NOTIFY THE IDOT TRAFFIC CONTROL SUPERVISOR AT 847-705-4470 A MINIMUM OF 72 HOURS IN ADVANCE OF BEGINNING WORK.
32. TRENCH BACKFILL FOR THIS PROJECT SHALL CONSIST OF CRUSHED CA-7, CAPPED WITH 12" OF CRUSHED CA-6 AND SHALL BE COMPACTED BY METHOD 1 ONLY, UNLESS OTHERWISE ALLOWED BY THE ENGINEER.
33. THE GENERAL CONTRACTOR IS REQUIRED TO HIRE AN ENVIRONMENTAL FIRM WITH AT LEAST (5) FIVE DOCUMENTED LEAKING UNDERGROUND STORAGE TANK CLEANUPS OR THAT IS PRE-QUALIFIED IN HAZARDOUS WASTE BY THE DEPARTMENT TO REMEDIATE THE SOIL CONTAMINATION AND MONITOR FOR WORKER PROTECTION.
34. THE CONTRACTOR SHALL MAINTAIN AND KEEP AT THE JOB SITE, AN UP TO DATE SET OF "RECORD DRAWINGS" SHOWING ALL CHANGES FROM THE ORIGINAL PLANS. THE LOCATION OF ALL SERVICE CONNECTIONS FOR SANITARY SEWER, STORM SEWER AND WATER SHALL BE SHOWN FROM THE CLOSEST MANHOLE OR VALVE VAULT. ALL FITTINGS, BENDS, VALVES, B-BOXES AND CLEANOUTS MUST BE SHOWN WITH FIELD DIMENSIONS. THE ELEVATION OF ALL RIMS, INVERTS AND PIPE SLOPES SHALL BE VERIFIED BY THE CONTRACTOR AND SHOWN ON THE "RECORD DRAWINGS". THE CONTRACTOR SHALL DELIVER THE "RECORD DRAWINGS" TO THE ENGINEER AT THE CONCLUSION OF THE PROJECT, PRIOR TO FINAL INSPECTION. THIS WORK SHALL BE INCLUDED IN THE COST OF CONSTRUCTION LAYOUT.

2012 BY BAYLES & WOODMAN, INC. FOR THE STATE OF ILLINOIS
 1846-0010 - EXPENSES 4/3/2013
 17/20/2012 10:48:40 AM
 437-CADD-SUPPLY-DRAWINGS-NOTES-12-GENNOTES.DWG
 010 437-CADD-SUPPLY-DRAWINGS-NOTES-12-GENNOTES.DWG



DESIGNED - DSH	REVISED - 10-12-12 PER IDOT
DRAWN - MAC	REVISED - 12-19-12 ADDENDUM 1
CHECKED - TLH	REVISED -
DATE - 8/23/12	FILE - 110025-12_GenNotes.shd

**STATE OF ILLINOIS
DEPARTMENT OF TRANSPORTATION**

SCALE: | STA. TO STA.

GENERAL NOTES

F.A.P./F.A.U. RTE.	SECTION	COUNTY	TOTAL SHEETS	SHEET NO.
0348/1352	C5-00160-00-CH	COOK	109	3
C-91-070-06			CONTRACT NO. 63756	
FED. ROAD DIST. NO. 1 ILLINOIS		FED. AID PROJECT F-0348/351		

SUMMARY OF QUANTITIES

CODE NUMBER	PAY ITEM	UNIT	TOTAL QUANTITY	CONSTRUCTION TYPE CODE		
				ROADWAY 0004	SAFETY 0021	NON PARTICIPATING
60500060	REMOVING INLETS	EACH	1	1	-	-
60600605	CONCRETE CURB, TYPE B	FOOT	795	350	-	445
60603800	COMBINATION CONCRETE CURB AND GUTTER, TYPE B-6.12	FOOT	2,384	1,589	-	795
60605000	COMBINATION CONCRETE CURB AND GUTTER, TYPE B-6.24	FOOT	4,291	4,291	-	-
60618300	CONCRETE MEDIAN SURFACE, 4 INCH	SQ FT	550	550	-	-
60619600	CONCRETE MEDIAN, TYPE SB-6.12	SQ FT	1,197	1,197	-	-
67100100	MOBILIZATION	L SUM	1	1	-	-
66900200	NON-SPECIAL WASTE DISPOSAL	CU YD	1,100	1,000	-	100
66900450	SPECIAL WASTE PLANS AND REPORTS	L SUM	1	1	-	-
66900530	SOIL DISPOSAL ANALYSIS	EACH	10	10	-	-
70102620	TRAFFIC CONTROL AND PROTECTION, STANDARD 701501	L SUM	1	1	-	-
70102625	TRAFFIC CONTROL AND PROTECTION, STANDARD 701606	L SUM	1	1	-	-
70102630	TRAFFIC CONTROL AND PROTECTION, STANDARD 701601	L SUM	1	1	-	-
70102632	TRAFFIC CONTROL AND PROTECTION, STANDARD 701602	L SUM	1	1	-	-
70102635	TRAFFIC CONTROL AND PROTECTION, STANDARD 701701	L SUM	1	1	-	-
70102640	TRAFFIC CONTROL AND PROTECTION, STANDARD 701801	L SUM	1	1	-	-
70300100	SHORT TERM PAVEMENT MARKING	FOOT	807	790	-	17
70300210	TEMPORARY PAVEMENT MARKING LETTERS AND SYMBOLS	SQ FT	504	372	-	132
70300220	TEMPORARY PAVEMENT MARKING - LINE 4"	FOOT	9,747	9,281	-	466
70300240	TEMPORARY PAVEMENT MARKING - LINE 6"	FOOT	1,926	1,858	-	68
70300260	TEMPORARY PAVEMENT MARKING - LINE 12"	FOOT	70	70	-	-
70300280	TEMPORARY PAVEMENT MARKING - LINE 24"	FOOT	213	163	-	50
70301000	WORK ZONE PAVEMENT MARKING REMOVAL	SQ FT	91	89	-	2
72000100	SIGN PANEL - TYPE 1	SQ FT	137	105	18	14
72800100	TELESCOPING STEEL SIGN SUPPORT	FOOT	237	207	-	30
78000100	THERMOPLASTIC PAVEMENT MARKING LETTERS AND SYMBOLS	SQ FT	504	372	-	132
78000200	THERMOPLASTIC PAVEMENT MARKING - LINE 4"	FOOT	8,367	7,901	-	466
78000400	THERMOPLASTIC PAVEMENT MARKING - LINE 6"	FOOT	1,926	1,858	-	68
78000600	THERMOPLASTIC PAVEMENT MARKING - LINE 12"	FOOT	70	70	-	-
78000650	THERMOPLASTIC PAVEMENT MARKING - LINE 24"	FOOT	213	163	-	50

* INDICATES SPECIALTY ITEM

CONTRACT NO. 0348/1352 - SECTION 05-00160-00-CH COUNTY COOK TOTAL SHEETS 109 SHEET NO. 7
 STATE OF ILLINOIS - PROFESSIONAL DESIGN FIRM
 PROJECT NO. 110025-12-S00-SUB CIV. ENGR. 8/23/12
 DATE 8/23/12
 FILE 110025-12-S00.sht
 DESIGNED - DSH REVISED - 10-12-12 PER IDOT
 DRAWN - MAC REVISED - 12-19-12 ADDENDUM 1
 CHECKED - TLH REVISED -
 DATE 8/23/12 FILE 110025-12-S00.sht



DESIGNED - DSH	REVISED - 10-12-12 PER IDOT
DRAWN - MAC	REVISED - 12-19-12 ADDENDUM 1
CHECKED - TLH	REVISED -
DATE - 8/23/12	FILE - 110025-12-S00.sht

**STATE OF ILLINOIS
DEPARTMENT OF TRANSPORTATION**

SUMMARY OF QUANTITIES

SCALE: STA. TO STA.

F.A.P./F.A.U. RTE.	SECTION	COUNTY	TOTAL SHEETS	SHEET NO.
0348/1352	05-00160-00-CH	COOK	109	7
C-91-070-06			CONTRACT NO. 63756	
FED. ROAD DIST. NO. 1 ILLINOIS			FED. AID PROJECT F-0348(3)	

SUMMARY OF QUANTITIES

CODE NUMBER	PAY ITEM	UNIT	TOTAL QUANTITY	CONSTRUCTION TYPE CODE		
				ROADWAY 0004	SAFETY 0021	NON PARTICIPATING
* XX008188	SANITARY SEWER REPAIR, REMOVE AND REPLACE	FOOT	98	-	-	98
* XX008296	GATE VALVE 10" WITH VAULT, 5' DIAMETER	EACH	9	-	-	9
* XX008789	REMOVE EXISTING HANDHOLE, LIGHTING	EACH	6	-	6	-
* XX008790	WATER MAIN, (RESTRAINED JOINT TYPE) 6"	FOOT	45	-	-	45
* XX008791	WATER MAIN, (RESTRAINED JOINT TYPE) 8"	FOOT	45	-	-	45
* XX008792	WATER MAIN, (RESTRAINED JOINT TYPE) 10"	FOOT	530	-	-	530
* XX008793	WATER MAIN - HDD METHOD, (RESTRAINED JOINT TYPE) 8"	FOOT	60	-	-	60
* XX008794	WATER MAIN - HDD METHOD, (RESTRAINED JOINT TYPE) 10"	FOOT	195	-	-	195
* XX008795	WATER MAIN INSIDE CASING PIPE, 8"	FOOT	23	-	-	23
* XX008796	CASING PIPE, 16"	FOOT	23	-	-	23
* XX008797	WATER MAIN TREE TUNNELING, 10"	FOOT	40	-	-	40
* XX008798	CONNECTION TO EXISTING WATER MAINS (NON-PRESSURE) - 10"	EACH	10	-	-	10
* X5630710	CONNECTION TO EXISTING WATER MAIN, 10"	EACH	1	-	-	1
* XX008799	WATER SERVICE LINE 1 -1/2"	EACH	2	-	-	2
* XX008530	WATER SERVICE LINE, DIRECTIONAL BORING, 1 -1/2"	EACH	1	-	-	1
* XX007821	WATER SERVICE LINE 2"	EACH	1	-	-	1
* XX008801	WATER SERVICE LINE, DIRECTIONAL BORING 2"	EACH	1	-	-	1
* XX008800	GATE VALVE 6" WITH VAULT, 5' DIAMETER	EACH	1	-	-	1
* XX008802	INSERTION VALVE 10" WITH VAULT	EACH	1	-	-	1
* XX008803	INSERTION VALVE 10" WITH VALVE BOX	EACH	1	-	-	1
* XX008804	WATER MAIN CUT-IN TEE, 10"	EACH	4	-	-	4
* XX008805	EXISTING TEE REMOVAL, 10"	EACH	3	-	-	3
* XX008806	ABANDON EXISTING WATER MAIN, FILL WITH CLSM, 8"	FOOT	165	-	-	165
* XX008807	ABANDON EXISTING WATER MAIN, FILL WITH CLSM, 10"	FOOT	337	-	-	337
* XX008808	STEEL CASING REMOVAL, 20 INCH	FOOT	12	-	-	12
* 66901000	BACKFILL PLUGS	CU YD	5	5	-	-
* 72000200	SIGN PANEL - TYPE 2	SQ FT	33	-	33	-
* Z0004002	BOLLARDS	EACH	5	5	-	-
* X0301828	ENGINEERED BARRIER	SQ YD	20	20	-	-

* INDICATES SPECIALTY ITEM

CONSULT: 0720 BY: BAXTER, WOODMAN, INC. ... \projects\0012-12-100\0012-12-100-001\0012-12-100-001.dwg
 SCALE: 1" = 40'-0" PROFESSIONAL ENGINEER EX-100
 LICENSE NO.: 0012-12-100-001 EXPIRES: 12/31/2012
 DATE: 8/23/12



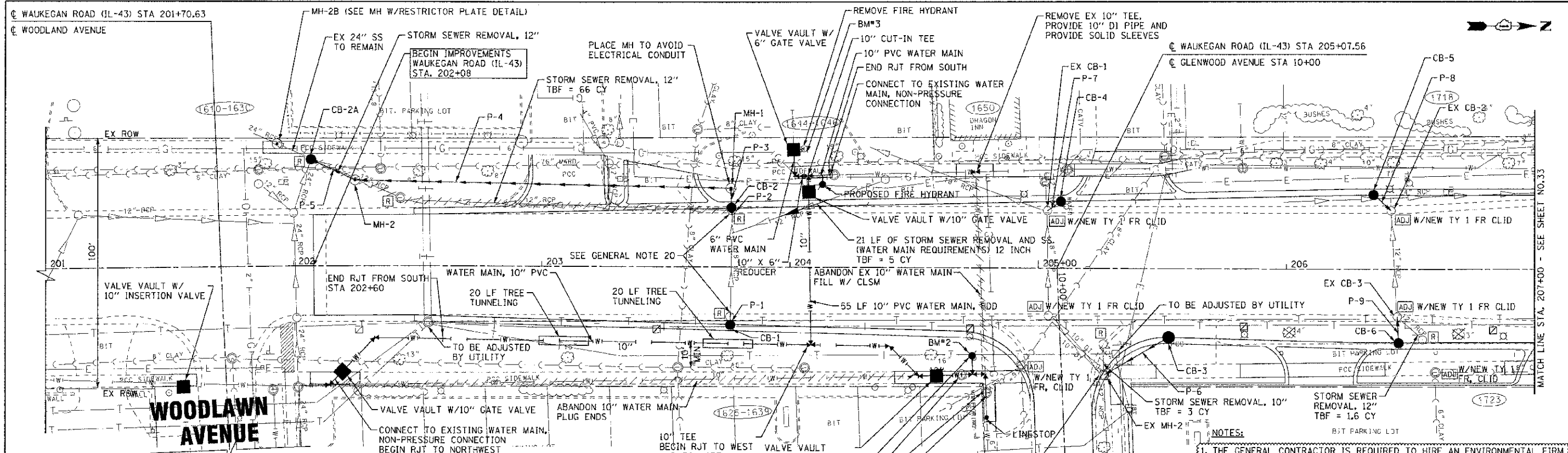
DESIGNED - DSH	REVISED - 10-12-12 PER IDOT
DRAWN - MAC	REVISED - 10-29-12 PER VILLAGE
CHECKED - TLH	REVISED - 12-19-12 ADDENDUM 1
DATE - 8/23/12	FILE - 110025-12-500.shd

**STATE OF ILLINOIS
DEPARTMENT OF TRANSPORTATION**

SUMMARY OF QUANTITIES

SCALE: STA. TO STA.

F.A.P./F.A.U. RTE.	SECTION	COUNTY	TOTAL SHEETS	SHEET NO.
0348/1352	05-0016C-00-CH	COOK	09	11
C-91-070-06			CONTRACT NO. 63756	
FED. ROAD DIST. NO. 1 (ILLINOIS)			FED. AID PROJECT #-0348/1352	

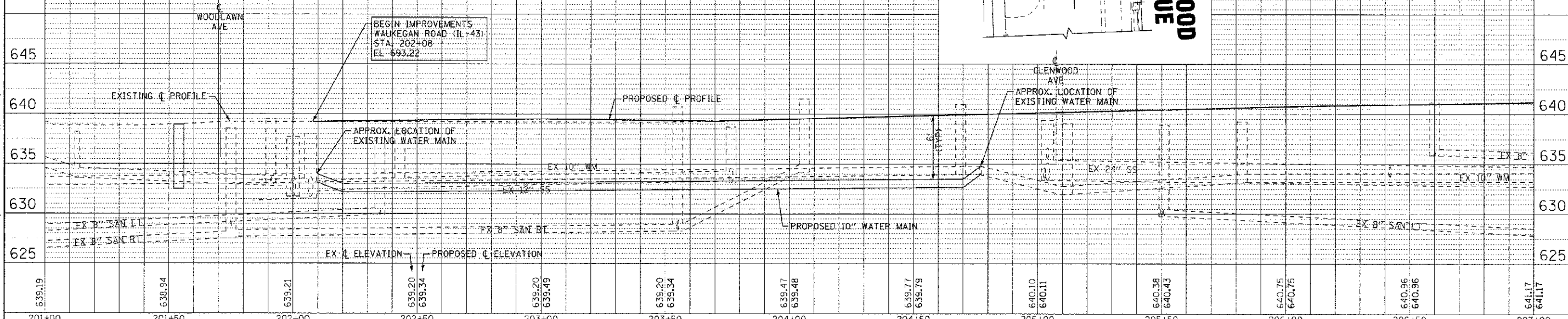


STORM STRUCTURES						
NO.	STATION	OFFSET	TYPE	FRAME	RIM/EP	INVERTS
CB-1	209+76	23' RT	CATCH BASIN, TYPE C	TY 24 F&G	638.82 EP	636.81 12" W
CB-2	203+76	23.5' LT	CATCH BASIN, TYPE A, 4' DIA	TY 24 F&G	638.71 EP	633.12 18" E (EX); 633.12 18" W
CB-3	205+52	27.6' RT	CATCH BASIN, TYPE C	TY 24 F&G	639.89 EP	636.65 12" SE
CB-4	205+09	26.6' LT	CATCH BASIN, TYPE C	TY 24 F&G	639.46 EP	635.31 12" SE
CB-5	206+35	29.5' RT	CATCH BASIN, TYPE C	TY 24 F&G	640.16 EP	636.18 12" NE
CB-6	206+45	29.5' RT	CATCH BASIN, TYPE C	TY 24 F&G	640.35 EP	636.90 12" W
EX CB-1	205+04	22.9' LT	EX CATCH BASIN	TY 1 FR, CLID	-	635.62 12" W (EX); 633.63 18" E & SW (EX); 635.13 12" NW
EX CB-2	206+42	23.3' LT	EX CATCH BASIN	TY 1 FR, CLID	-	636.00 12" E (EX); 635.80 12" W (EX); 636.00 12" SW
EX CB-3	206+45	19.1' RT	EX CATCH BASIN	TY 1 FR, CLID	-	638.14 12" NE (EX); 636.59 12" W (EX); 636.70 12" E
EX MH-2	205+27	42.8' RT	EX MANHOLE	TY 24 F&G	640.03 EP	635.256 10" W (PLUG); 635.16 12" E (EX); 635.26 10" (x2) SW (EX); 636.05 12" NW
MH-1	203+76	31.4' LT	MANHOLE, TYPE A, 4'-DIA	TY 1 FR, CLID	638.90 RIM	633.08 18" E & S
MH-2	202+25	34.3' LT	MANHOLE, TYPE A, 4'-DIA	TY 1 FR, CLID	638.25 RIM	632.32 18" SW & N
CB-2A	202+07	42.6' LT	CATCH BASIN, TYPE A, 5'-DIA	TY 1 FR, CLID	638.19 RIM	632.12 18" NE; 631.71 24" E (EX); 631.53 24" SW (EX)
MH-2B	201+94	49' LT	MANHOLE, TYPE A, 5'-DIA, RESTRICTOR PLATE	TY 1 FR, CLID	638.26 RIM	631.50 24" NE & SW (EX); RESTRICTOR 631.60 15"

NOTES:
 1. THE GENERAL CONTRACTOR IS REQUIRED TO HIRE AN ENVIRONMENTAL FIRM WITH AT LEAST (5) FIVE DOCUMENTED LEAKING UNDERGROUND STORAGE TANK CLEANUPS OR THAT IS PRE-QUALIFIED IN HAZARDOUS WASTE BY THE DEPARTMENT TO REMEDIATE THE SOIL CONTAMINATION AND MONITOR FOR WORKER PROTECTION.

STORM PIPES					
NO.	TYPE	LENGTH (LF)	DIA (IN)	SLOPE	TBF (CY)
P-1	SS, CL A, TYPE 1	5	12	0.00%	0.7
P-2	SS, CL A, TYPE 1	3	18	0.50%	1.9
P-3	SS, CL A, TYPE 1	7	18	0.50%	3.3
P-4	SS, CL A, TYPE 1	151	18	0.50%	59.0
P-5	SS, CL A, TYPE 1	19	18	1.00%	0.0
P-6	SS, CL A, TYPE 1	30	12	2.00%	5.8
P-7	SS (WATER MAIN REQUIREMENTS)	6	12	3.00%	1.6
P-8	SS, CL A, TYPE 1	9	12	2.00%	2.3
P-9	SS, CL A, TYPE 1	10	12	2.00%	2.0

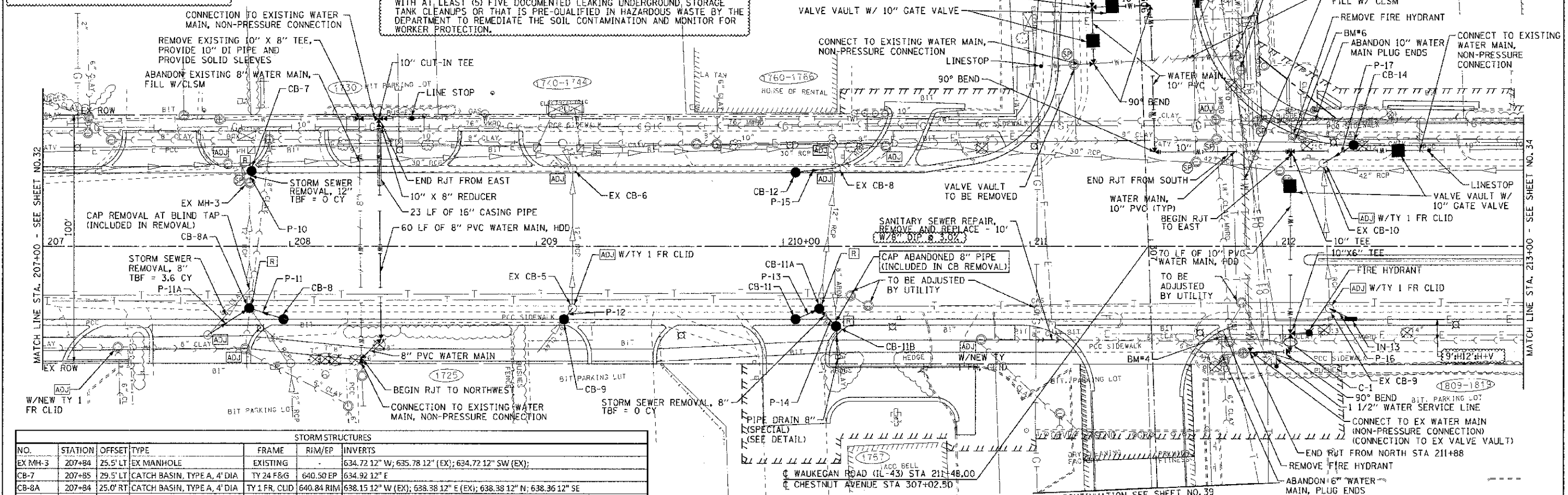
WAUKEGAN ROAD (IL-43)



MWRD SEWER CROSSINGS			
NO.	STA/OFFSET	UTILITIES	INV. ELV
C-1	212+05.38' RT	EX 18" SAN PR 10" WM	628.89 635.77

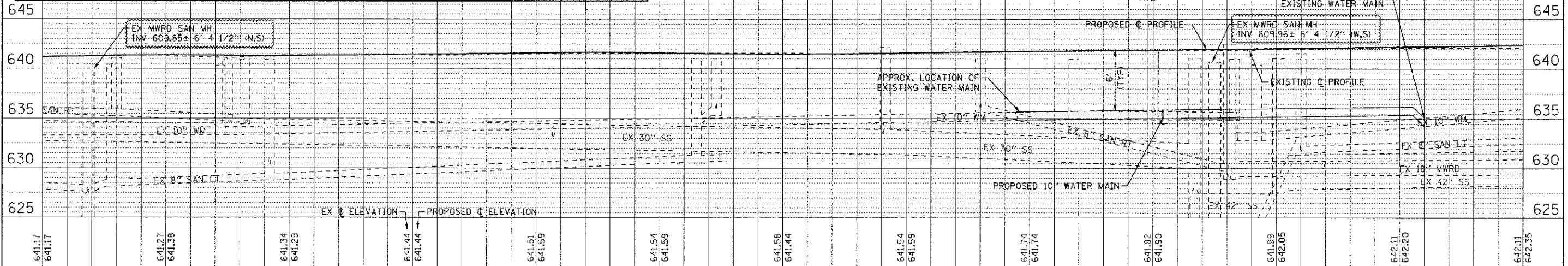
NOTES:

- MAKE NON-PRESSURE CONNECTION AT 1730 WAUKEGAN ROAD SATURDAY AFTER 1 PM OR SUNDAY
- THE GENERAL CONTRACTOR IS REQUIRED TO HIRE AN ENVIRONMENTAL FIRM WITH AT LEAST (5) FIVE DOCUMENTED LEAKING UNDERGROUND STORAGE TANK CLEANUPS OR THAT IS PRE-QUALIFIED IN HAZARDOUS WASTE BY THE DEPARTMENT TO REMEDIATE THE SOIL CONTAMINATION AND MONITOR FOR WORKER PROTECTION.



STORM STRUCTURES						
NO.	STATION	OFFSET	TYPE	FRAME	RIM/EP	INVERTS
EX MH-3	207+84	25.5' LT	EX MANHOLE	EXISTING	-	634.72 12" W; 635.78 12" E (EX); 634.72 12" SW (EX);
CB-7	207+85	29.5' LT	CATCH BASIN, TYPE A, 4' DIA	TY 24 F&G	640.50 EP	634.92 12" E
CB-8A	207+84	25.0' RT	CATCH BASIN, TYPE A, 4' DIA	TY 1 FR, CLID	640.84 RIM	638.15 12" W (EX); 638.38 12" E (EX); 638.38 12" N; 638.36 12" SE
CB-8	207+97	29.5' RT	CATCH BASIN, TYPE C	TY 24 F&G	640.67 EP	638.65 12" S
EX CB-5	209+15	25.0' RT	EX CATCH BASIN	TY 1 FR, CLID	-	FIELD VERIFY
CB-9	209+11	29.5' RT	CATCH BASIN, TYPE C	TY 24 F&G	641.02 EP	638.47± 6" SE (EX-FIELD VERIFY); 638.47± 12" NW (FIELD VERIFY)
EX CB-6	209+15	31.1' LT	EX CATCH BASIN	EXISTING	640.89 EP	636.30 12" S (EX); 636.41 12" E (EX); 637.60 12" W (EX)
CB-11A	210+15	25.2' RT	CATCH BASIN, TYPE A, 4' DIA	TY 1 FR, CLID	640.98 RIM	638.39 12" W (EX); 638.50 12" NE; 638.50 12" SE
CB-11B	210+21	32.4' RT	CATCH BASIN, TYPE C	TY 1 FR, CLID	640.95 RIM	638.80 8" E; 638.80 12" SW
CB-11	210+05	29.5' RT	CATCH BASIN, TYPE C	TY 24 F&G	640.85 EP	638.51 12" NW
EX CB-8	210+21	31.4' LT	EX CATCH BASIN	EXISTING	640.71	636.36 12" E (EX); 637.26 12" W (EX); 635.85 12" NW (EX); 637.03 12" S
CB-12	210+05	29.5' LT	CATCH BASIN, TYPE C	TY 24 F&G	640.70 EP	637.35 12" N
EX CB-9	212+21	25.2' RT	EX CATCH BASIN	TY 1 FR, CLID	-	637.52 12" W (EX); 638.93 12" NE
IN-13	212+30	29.5' RT	INLET, TYPE A	TY 24 F&G	641.58 EP	639.66 12" SW
EX CB-10	212+19	33.2' LT	EX CATCH BASIN	TY 1 FR, CLID	-	637.11 12" E (EX); 637.06 12" SE (EX); 637.30 12" NW
CB-14	212+31	40.5' LT	CATCH BASIN, TYPE C	TY 24 F&G	641.25 EP	637.58 12" SE

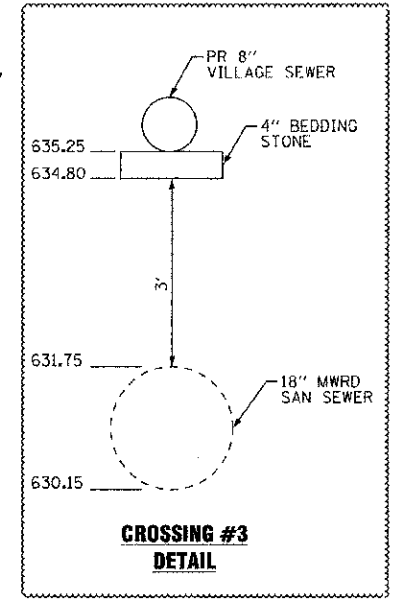
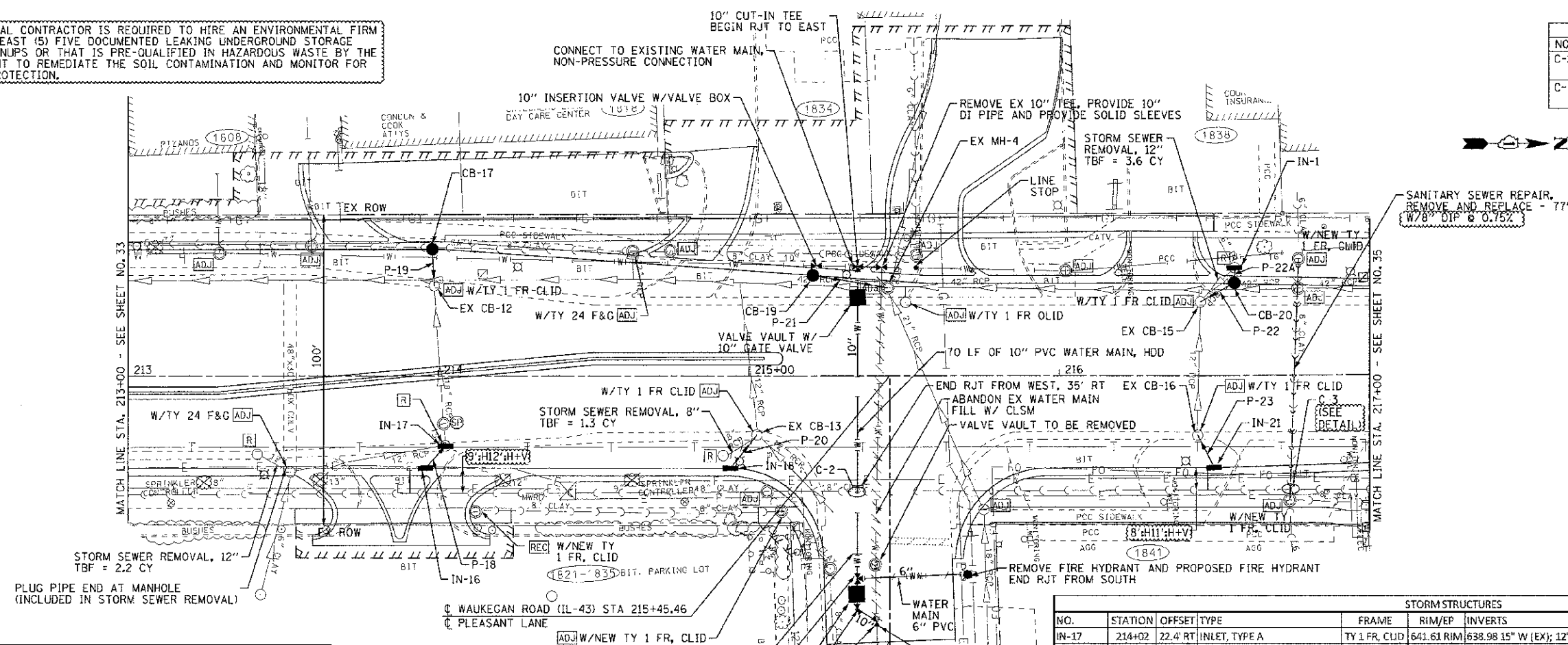
STORMPIPES					
NO.	TYPE	LENGTH (LF)	DIA (IN)	SLOPE	TBF (CY)
P-10	SS, CLA, TYPE 1	4	12	5.00%	2.6
P-11	SS, CLA, TYPE 1	14	12	2.00%	1.9
P-11A	SS, CLA, TYPE 1	20	12	2.50%	3.3
P-12	SS, CLA, TYPE 1	5	12	0.50%	0.7
P-13	SS, CLA, TYPE 1	9	12	0.22%	1.2
P-14	SS, CLA, TYPE 1	10	12	1.00%	1.4
P-15	SS, CLA, TYPE 1	16	12	2.00%	3.0
P-16	SS, CLA, TYPE 1	9	12	8.11%	1.4
P-17	SS (WATER MAIN REQUIREMENTS)	14	12	2.00%	3.0



NOTES:

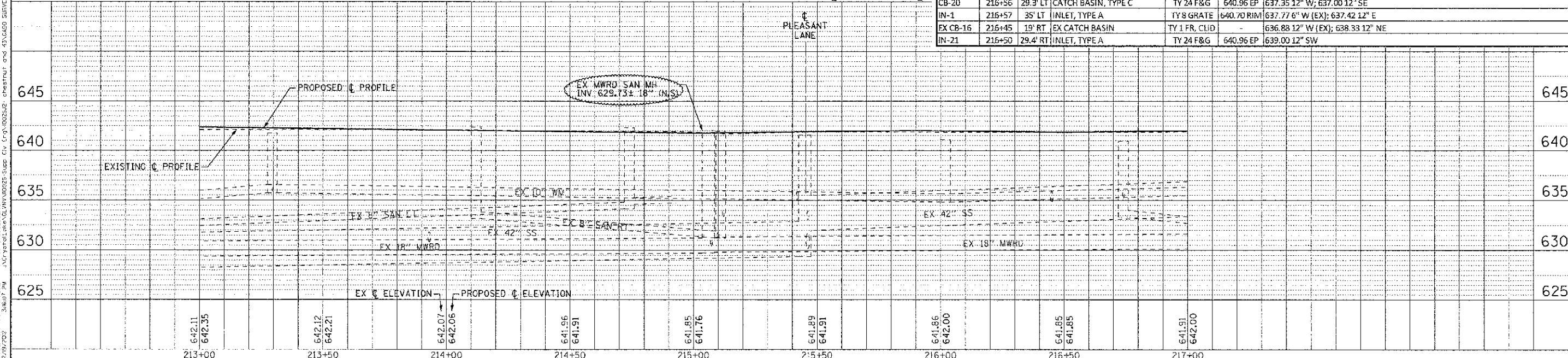
1. THE GENERAL CONTRACTOR IS REQUIRED TO HIRE AN ENVIRONMENTAL FIRM WITH AT LEAST (5) FIVE DOCUMENTED LEAKING UNDERGROUND STORAGE TANK CLEANUPS OR THAT IS PRE-QUALIFIED IN HAZARDOUS WASTE BY THE DEPARTMENT TO REMEDIATE THE SOIL CONTAMINATION AND MONITOR FOR WORKER PROTECTION.

MWRD SEWER CROSSINGS				
NO.	STA/OFFSET	UTILITIES	INV ELV	
C-2	215+35, 37' RT	EX 18" SAN PR 10" WM	629.87 634.70	
C-3	216+75, 37' RT	EX 18" SAN PR 8" SAN	630.15 635.25	



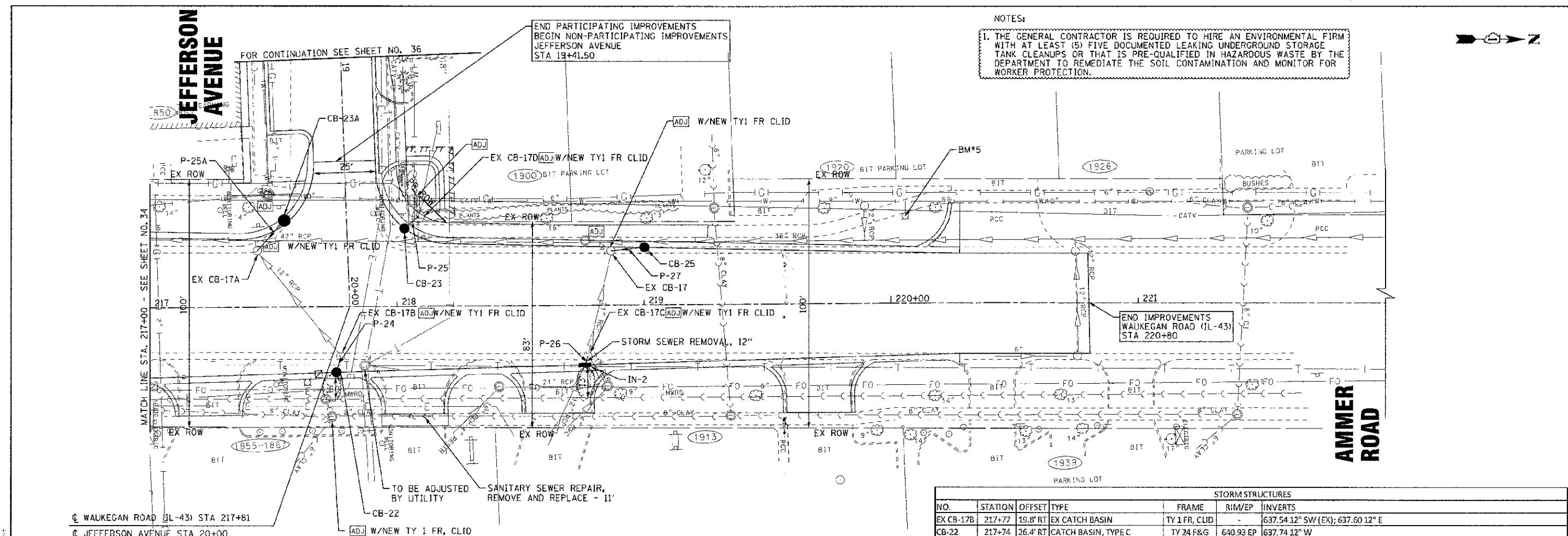
STORM PIPES					
NO.	TYPE	LENGTH (LF)	DIA (IN)	SLOPE	TBF (CY)
P-18	SS, CLA, TYPE 1	9	12	2.00%	1.6
P-19	SS (WATER MAIN REQUIREMENTS)	11	12	5.00%	2.9
P-20	SS, CLA, TYPE 1	11	12	2.00%	1.5
P-21	SS (WATER MAIN REQUIREMENTS)	24	12	2.00%	4.9
P-22	SS (WATER MAIN REQUIREMENTS)	12	12	5.00%	3.3
P-22A	SS (WATER MAIN REQUIREMENTS)	4	12	1.75%	0.8
P-23	SS, CLA, TYPE 1	11	12	6.09%	1.5

STORM STRUCTURES						
NO.	STATION	OFFSET	TYPE	FRAME	RIM/EP	INVERTS
IN-17	214+02	22.4' RT	INLET, TYPE A	TY 1 FR, CLID	641.61 RIM	638.98 15" W (EX); 12" S (EX-FIELD VERIFY); 639.00 12" SE
IN-16	213+96	29.5' RT	INLET, TYPE A	TY 24 F&G	641.48 EP	639.18 12" NW
EX CB-12	213+99	28.8' LT	EX CATCH BASIN	TY 1 FR, CLID	-	634.87 18" S (EX); 635.32 18" E (EX); 636.85 12" W
CB-17	213+98	40.5' LT	CATCH BASIN, TYPE C	TY 24 F&G	641.25 EP	637.40 12" E
EX CB-13	215+03	18.9' RT	EX CATCH BASIN	TY 1 FR, CLID	-	638.41 12" NE (EX); 636.76 12" W (EX); 638.35 12" SE
IN-18	214+94	29.5' RT	INLET, TYPE A	TY 24 F&G	641.20 EP	638.57 12" NW
EX MH-4	215+45	28' LT	EX MANHOLE	EXISTING	-	633.08 10" NW (EX); 630.18 21" NE (EX); 631.98 42" N (EX); 629.38 42" S (EX); 636.92 12" S
CB-19	215+21	32' LT	CATCH BASIN, TYPE C	TY 24 F&G	640.83 EP	637.38 12" N
EX CB-15	216+46	23.5' LT	EX CATCH BASIN	TY 1 FR, CLID	-	636.23 12" W (EX); 636.27 12" E (EX); 636.39 12" NW
CB-20	216+56	29.3' LT	CATCH BASIN, TYPE C	TY 24 F&G	640.96 EP	637.35 12" W; 637.00 12" SE
IN-1	216+57	35' LT	INLET, TYPE A	TY 8 GRATE	640.70 RIM	637.77 6" W (EX); 637.42 12" E
EX CB-16	216+45	19' RT	EX CATCH BASIN	TY 1 FR, CLID	-	636.88 12" W (EX); 638.33 12" NE
IN-21	216+50	29.4' RT	INLET, TYPE A	TY 24 F&G	640.96 EP	639.00 12" SW



	DESIGNED - DSH	REVISED - 10-12-12 PER VILLAGE	STATE OF ILLINOIS DEPARTMENT OF TRANSPORTATION	DRAINAGE AND UTILITY WAUKEGAN ROAD (IL-43)		F.A.P./F.A.U. RTE.	SECTION	COUNTY	TOTAL SHEETS	SHEET NO.
	DRAWN - MAC	REVISED - 12-19-12 ADDENDUM 1		0348/1352	05-00160-00-Ch	COOK	109	34		
	CHECKED - TLH	REVISED		C-91-0'0-06		CONTRACT NO. 63756				
	DATE - 8/23/12	FILE - 110025-12-DU3.sht		FED. ROAD DIST. NO. 1 (ILLINOIS)		FED. AID PROJECT F-03461351				

C:\P\0348\1352\1352.DWG BY BAXTER & WOODMAN, INC. DATE 12/19/12
 STATE OF ILLINOIS - PROFESSIONAL DESIGN FIRM
 410 WEST WASHINGTON STREET, SUITE 200, CHICAGO, IL 60601
 TEL: 312.467.2000 FAX: 312.467.2001



NOTES:
 1. THE GENERAL CONTRACTOR IS REQUIRED TO HIRE AN ENVIRONMENTAL FIRM WITH AT LEAST (5) FIVE DOCUMENTED LEAKING UNDERGROUND STORAGE TANK CLEANUPS OR THAT IS PRE-QUALIFIED IN HAZARDOUS WASTE BY THE DEPARTMENT TO REMEDIATE THE SOIL CONTAMINATION AND MONITOR FOR WORKER PROTECTION.

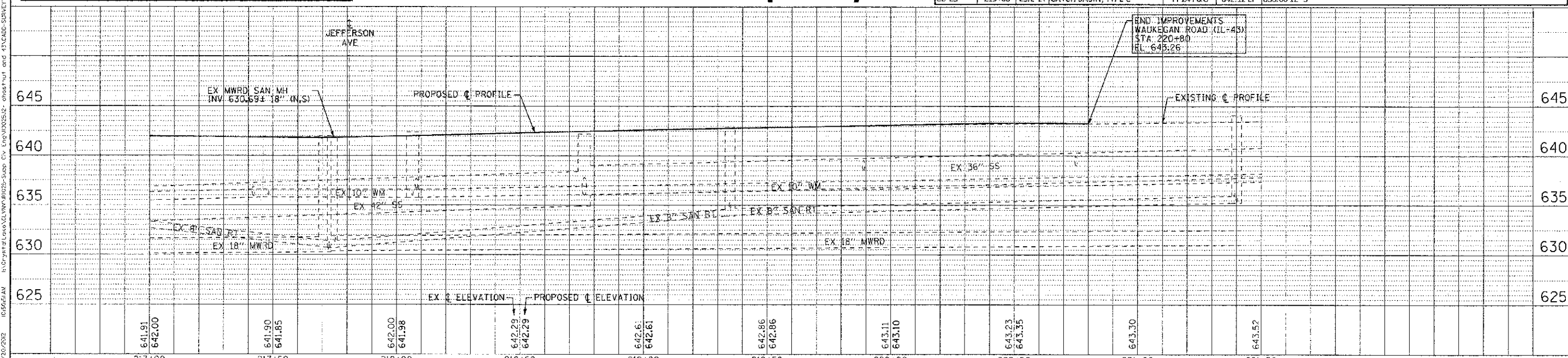
STORMPIPES

NO.	TYPE	LENGTH (LF)	DIA (IN)	SLOPE	TBF (CY)
P-24	SS, CL A, TYPE 1	7	12	2.00%	1.2
P-25	SS (WATER MAIN REQUIREMENTS)	7	12	4.00%	1.9
P-25A	SS, CL A, TYPE 1	16	12	2.00%	3.5
P-26	SS, CL A, TYPE 1	4	12	2.00%	0.6
P-27	SS, CL A, TYPE 1	13	12	4.00%	3.5

WAUKEGAN ROAD (IL-43)

STORM STRUCTURES

NO.	STATION	OFFSET	TYPE	FRAME	RIM/EP	INVERTS
EX CB-17B	217+77	19.8' RT	EX CATCH BASIN	TY 1 FR, CLID	-	637.54 12" SW (EX); 637.60 12" E
CB-22	217+74	26.4' RT	CATCH BASIN, TYPE C	TY 24 F&G	640.93 EP	637.74 12" W
EX CB-17A	217+43	22.7' LT	EX CATCH BASIN	TY 1 FR, CLID	-	637.20 12" NE (EX); 636.80 12" W (EX); 637.02 12" NW
CB-23A	217+54	35' LT	CATCH BASIN, TYPE C	TY 24 F&G	640.93 EP	637.32 12" SE
EX CB-17D	218+08	36.3' LT	EX CATCH BASIN	TY 1 FR, CLID	-	639.26 12" NW (EX); 635.76 12" E (EX); 638.00 12" SE
CB-23	218+03	31.5' LT	CATCH BASIN, TYPE C	TY 24 F&G	641.47 EP	638.28 12" NW
EX CB-17C	218+77	20.3' RT	EX CATCH BASIN	TY 1 FR, CLID	-	636.36 21" NE (EX); 636.26 21" NW (EX); 639.11 12" SE
IN-2	218+76	24' RT	INLET, TYPE A	TY 24 F&G	641.98 EP	639.19 12" SE (EX); 639.19 12" NW
EX CB-17	218+87	21.9' LT	EX CATCH BASIN	TY 1 FR, CLID	-	635.47 24" W (EX); 635.47 21" SE (EX); 637.54 12" N
CB-25	219+00	23.2' LT	CATCH BASIN, TYPE C	TY 24 F&G	642.12 EP	638.06 12" S



	DESIGNED - DSH	REVISED - 10-12-12 PER VILLAGE	STATE OF ILLINOIS DEPARTMENT OF TRANSPORTATION	DRAINAGE AND UTILITY WAUKEGAN ROAD (IL-43)	F.A.P./F.A.U. R.I.E.	SECTION	COUNTY	TOTAL SHEETS	SHEET NO.	
	DRAWN - MAC	REVISED - 12-19-12 ADDENDUM 1			0348/1352	05-00160-00-CH	COOK	109	35	
	CHECKED - TLH	REVISED			C-91-070-06		CONTRACT NO. 63756			
	DATE - 8/23/12	FILE - 110025-12-DU4.sh+			FED. ROAD DIST. NO. 1 ILLINOIS		FED. AID PROJECT F-0348/351			

SCALE: H: 1"=20' V: 1"=5' STA. 217+00 TO STA. 221+00

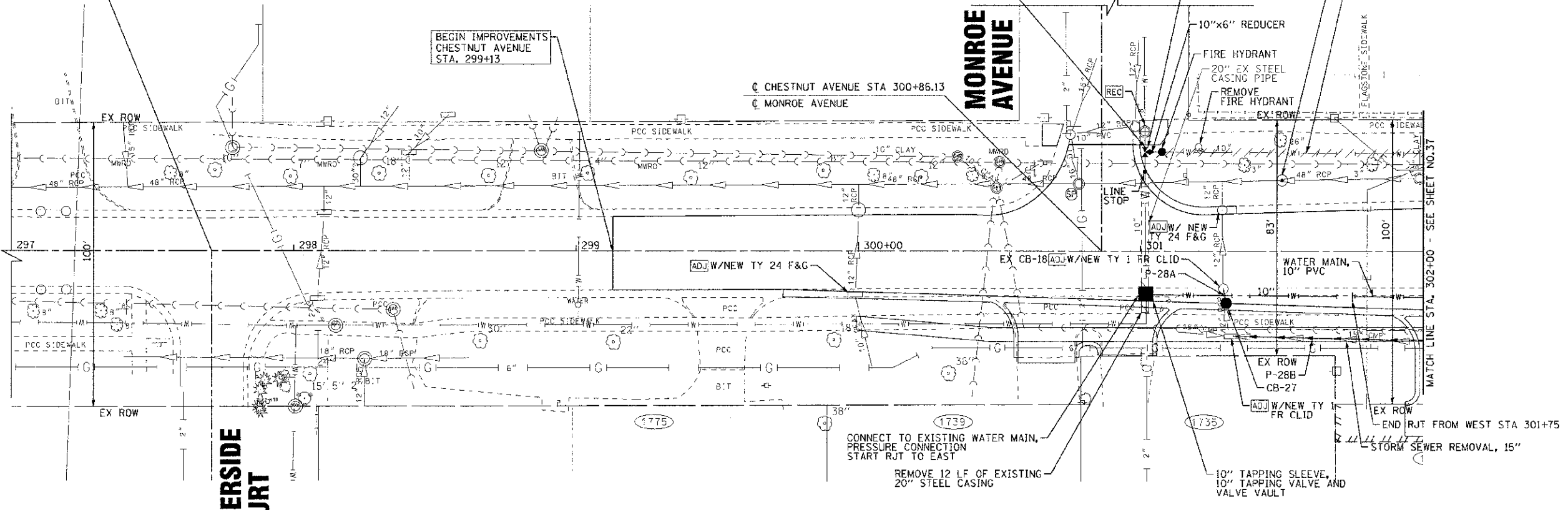
COPYRIGHT © 2012 BY BAXTER & WOODMAN, INC.
 STATE OF ILLINOIS PROFESSIONAL DESIGN FIRM
 LICENSE NO. 021-00000000-0000-0000-0000-00000000
 12/20/2012

☉ CHESTNUT AVENUE STA 297+70.89
 ☉ RIVERSIDE COURT

NOTES:
 1. THE GENERAL CONTRACTOR IS REQUIRED TO HIRE AN ENVIRONMENTAL FIRM WITH AT LEAST (5) FIVE DOCUMENTED LEAKING UNDERGROUND STORAGE TANK CLEANUPS OR THAT IS PRE-QUALIFIED IN HAZARDOUS WASTE BY THE DEPARTMENT TO REMEDIATE THE SOIL CONTAMINATION AND MONITOR FOR WORKER PROTECTION.

BEGIN IMPROVEMENTS CHESTNUT AVENUE STA. 299+13

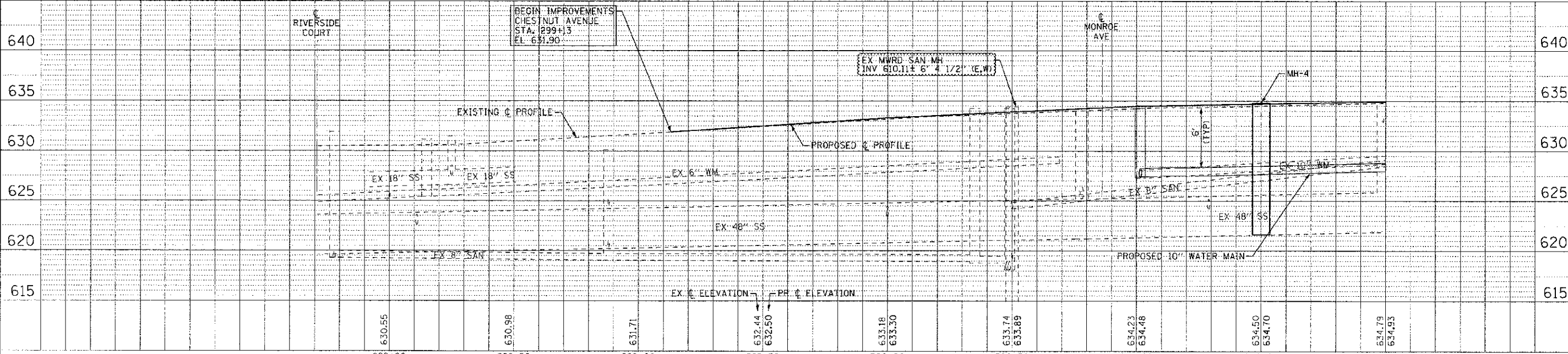
CONNECT TO EXISTING WATER MAIN, (NON-PRESSURE CONNECTION)



STORM PIPES					
NO.	TYPE	LENGTH (LF)	DIA (IN)	SLOPE	TBF (CY)
P-28A	SS (WATER MAIN REQUIREMENTS)	5	12	2.00%	0.7
P-28B	SS, CL B, TYPE 1	75	15	EX	13.4

CHESTNUT AVENUE

STORM STRUCTURES						
NO.	STATION	OFFSET	TYPE	FRAME	RIM/EP	INVERTS
EX CB-18	301+29	13.2' RT	EX CATCH BASIN	TY 1 FR, CLID	-	631.29 12" N (EX); 631.30 12" S
CB-27	301+30	18.3' RT	CATCH BASIN, TYPE C	TY 24 F&G	634.25 EP	631.65±12" S (EX); 631.40 12" N
MH-4	301+50	25' LT	MANHOLE, TYPE A, 7'-DIA, RESTRICTOR PLATE	TY 1 FR, CLID	634.81 RIM	621.64 48" E & W (EX); RESTRICTOR 622.50 32"



DESIGNED - DSH
 DRAWN - MAC
 CHECKED - TLH
 DATE - 8/23/12

REVISED - 12-19-12 ADDendum 1
 REVISED -
 REVISED -
 FILE - 110025-12-DJ5.sht

STATE OF ILLINOIS
 DEPARTMENT OF TRANSPORTATION

DRAINAGE AND UTILITY
 CHESTNUT AVENUE

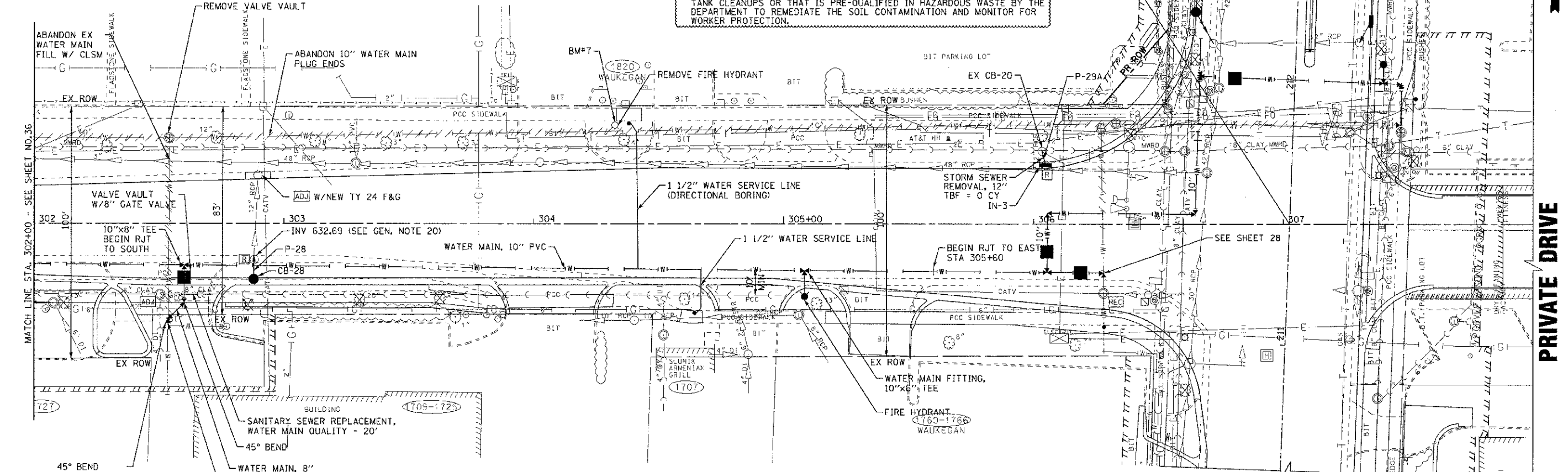
SCALE: H: 1"=20' V: 1"=5'
 STA. 297+00 TO STA. 302+00

F.A.P./F.A.U. RTE.	SECTION	COUNTY	TOTAL SHEETS	SHEET NO.
0348/1352	05-00160-00-CH	COOK	109	36
C-91-070-06			CONTRACT NO. 63756	
FED. ROAD DIST. NO. 1 (ILLINOIS)			FED. AID PROJECT F-0348(35)	

DEPARTMENT OF TRANSPORTATION, DIVISION OF TRANSPORTATION PLANNING AND DESIGN, 505 NORTH LAKE STREET, CHICAGO, ILLINOIS 60606
 8/23/2012 10:48 AM
 PROJECT: CHESTNUT AVENUE IMPROVEMENTS, STA. 297+70.89 TO 302+00
 DRAWING: DRAINAGE AND UTILITY, SHEET 36 OF 109
 110025-12-DJ5.sht

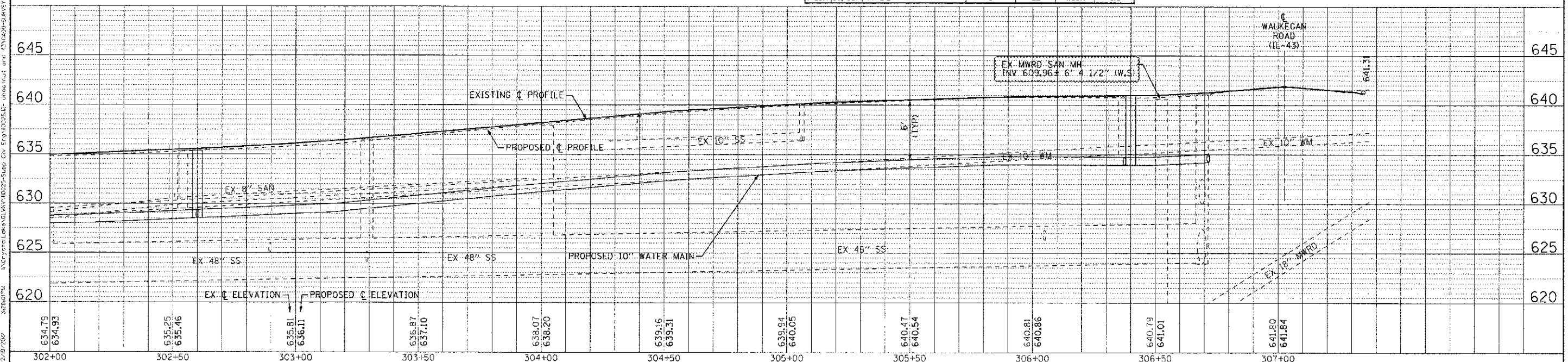
STORM STRUCTURES						
NO.	STATION	OFFSET	TYPE	FRAME	RIM/EP	INVERTS
EX CB-19	302+88	14.4' RT	EX CATCH BASIN	TY 1 FR, CLID	-	632.69 12" N (EX); 632.80 12" S
CB-28	302+88	22' RT	CATCH BASIN, TYPE C	TY 24 F&G	635.48 EP	632.87 12" N
EX CB-20	305+03	29' LT	EX CATCH BASIN	EXISTING	-	635.75 12" SE (EX); 637.30 12" S
IN-3	305+05	23.5' LT	INLET, TYPE A	TY 24 F&G	640.33 EP	637.50 12" N

NOTES:
 1. THE GENERAL CONTRACTOR IS REQUIRED TO HIRE AN ENVIRONMENTAL FIRM WITH AT LEAST (5) FIVE DOCUMENTED LEAKING UNDERGROUND STORAGE TANK CLEANUPS OR THAT IS PRE-QUALIFIED IN HAZARDOUS WASTE BY THE DEPARTMENT TO REMEDIATE THE SOIL CONTAMINATION AND MONITOR FOR WORKER PROTECTION.



CHESTNUT AVENUE

STORM PIPES					
NO.	TYPE	LENGTH (LF)	DIA (IN)	SLOPE	TBF (CY)
P-28	SS (WATER MAIN REQUIREMENTS)	7	12	1.00%	1.3
P-29A	SS, CL A, TYPE 1	5	12	4.00%	0.8



DESIGNED - DSH	REVISED - 10-12-12 PER VILLAGE
DRAWN - MAC	REVISED - 12-19-12 ADDENDUM 1
CHECKED - TLF	REVISED -
DATE - 8/23/12	FILE 110025-12-DU6.sht

STATE OF ILLINOIS
 DEPARTMENT OF TRANSPORTATION

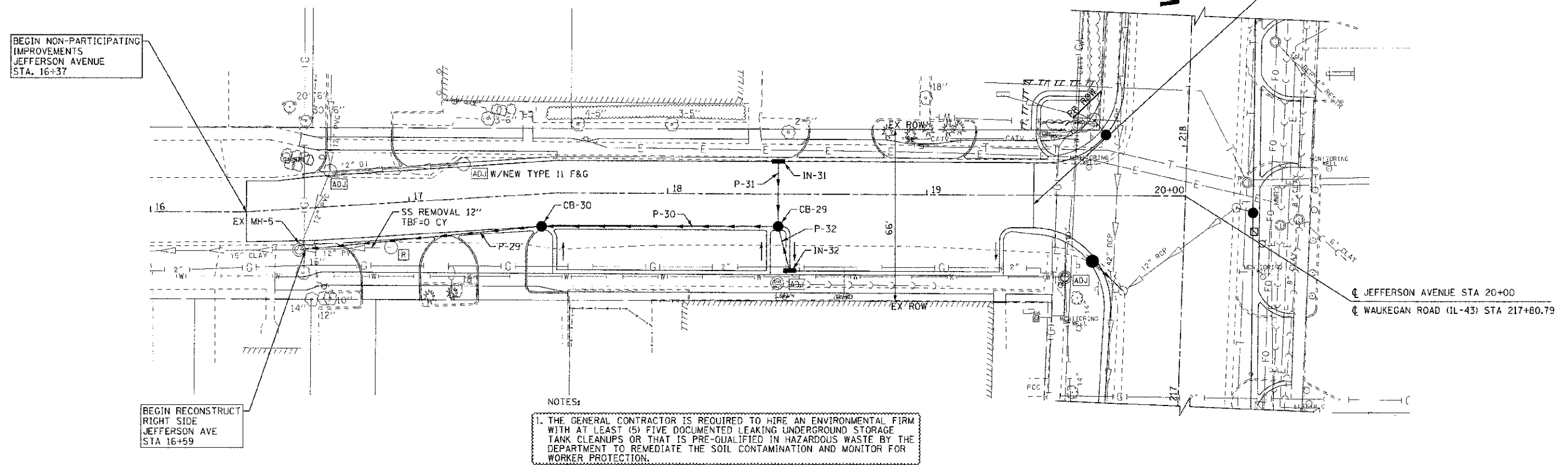
DRAINAGE AND UTILITY
 CHESTNUT AVENUE

F.A.P./F.A.U. RTE.	SECTION	COUNTY	TOTAL SHEETS	SHEET NO.
0348/1352	05-00160-00-CH	COOK	109	37
C-91-070-06		CONTRACT NO. 63756		
FED. ROAD DIST. NO. 1 (ILLINOIS)		FED. AID PROJECT F-0348/36		

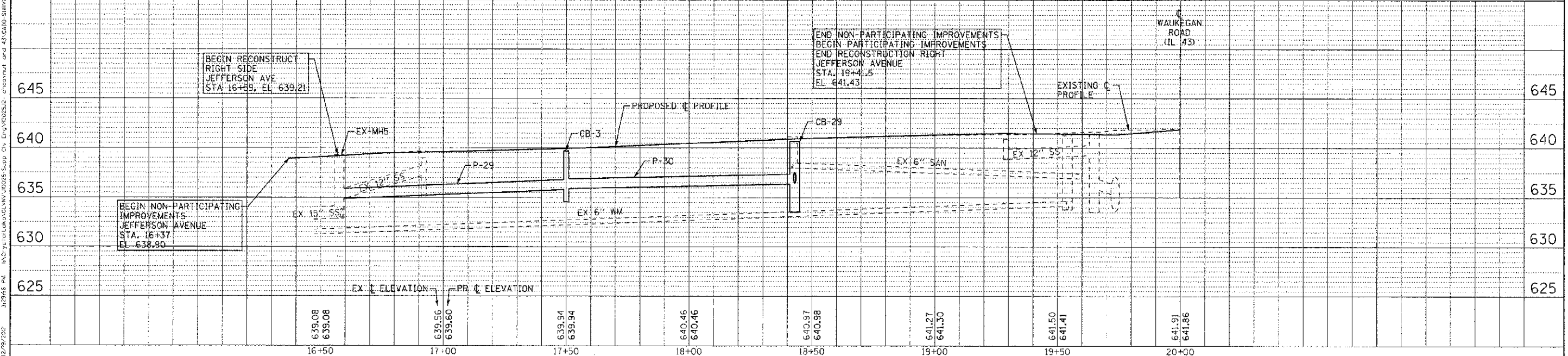
COPYRIGHT © 2012 BY BAXTER & WOODMAN, INC.
 STATE OF ILLINOIS - PROFESSIONAL DESIGN FIRM
 2/19/2012
 110025-12-DU6.sht

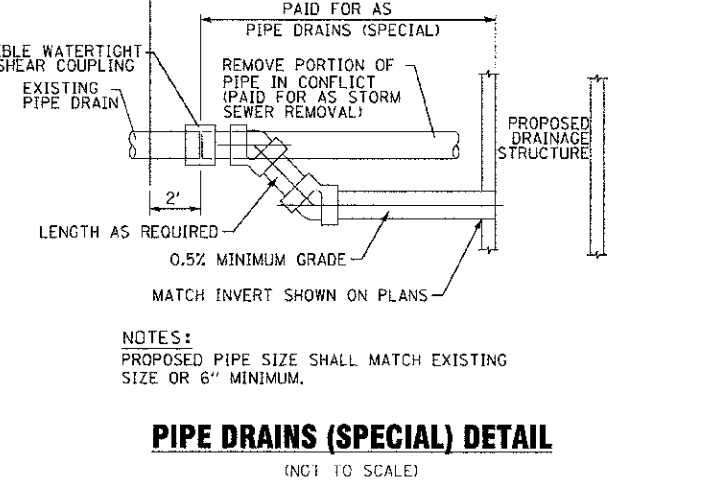
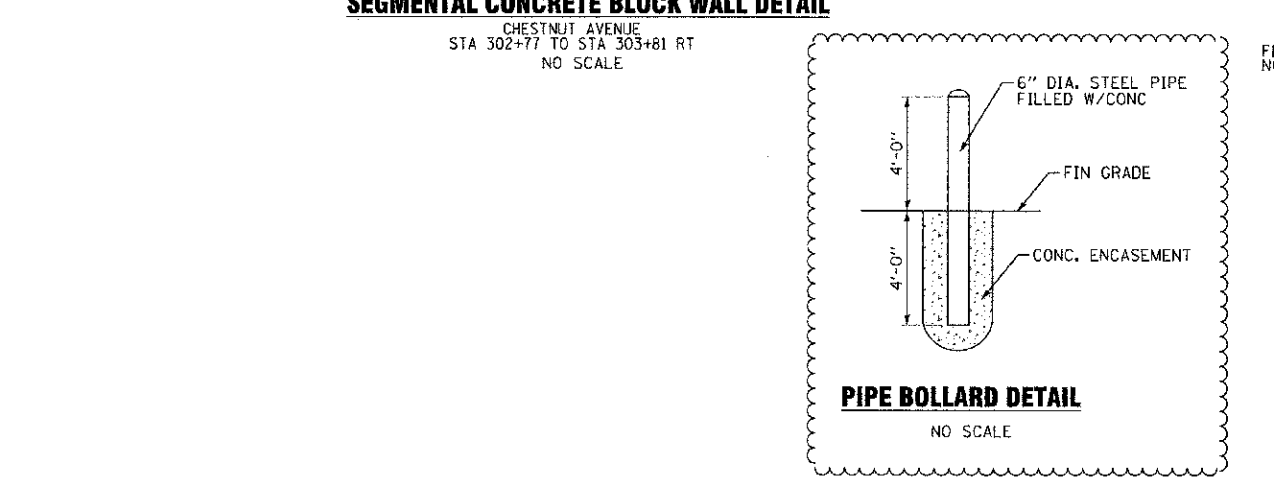
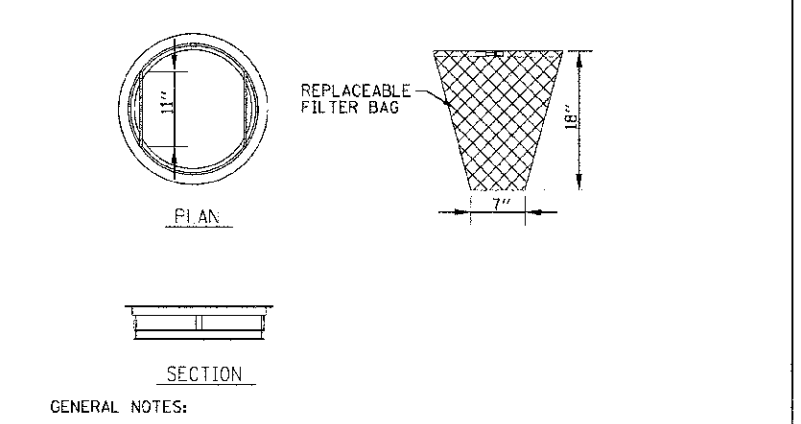
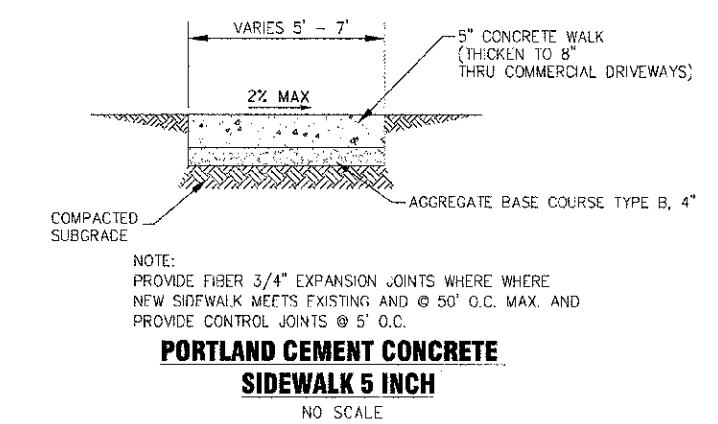
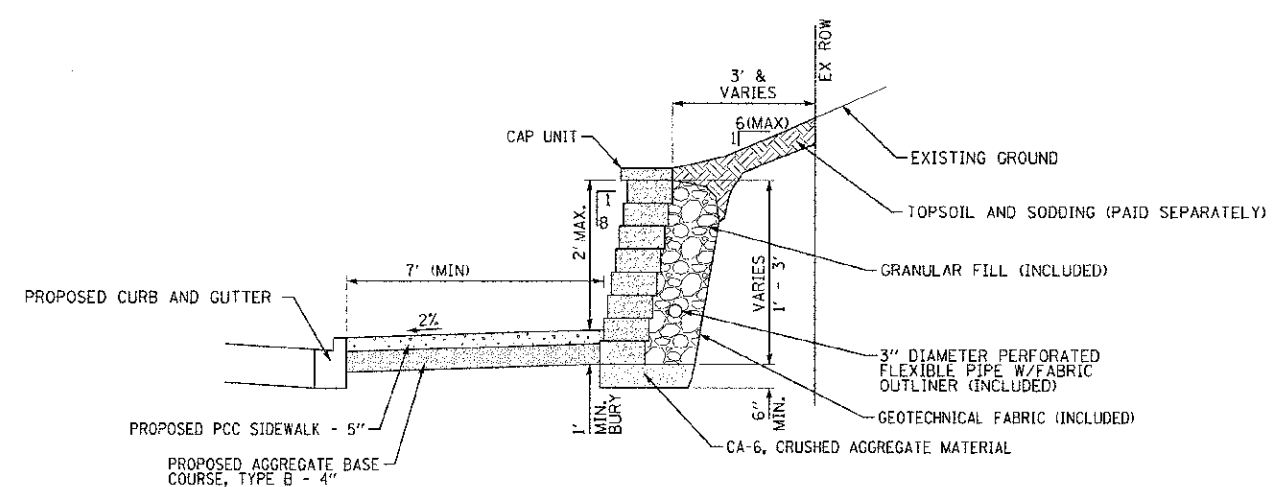
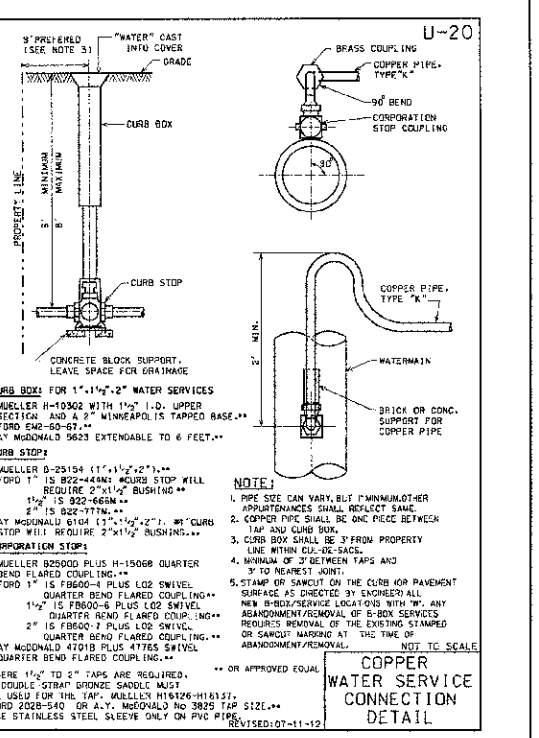
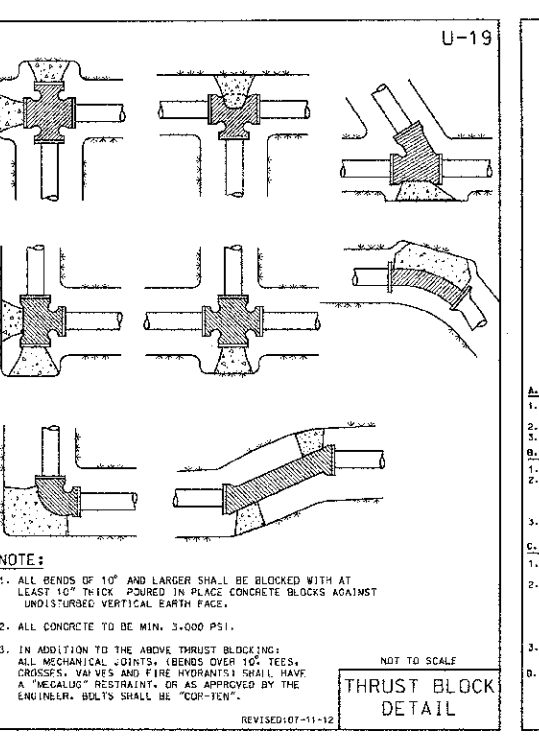
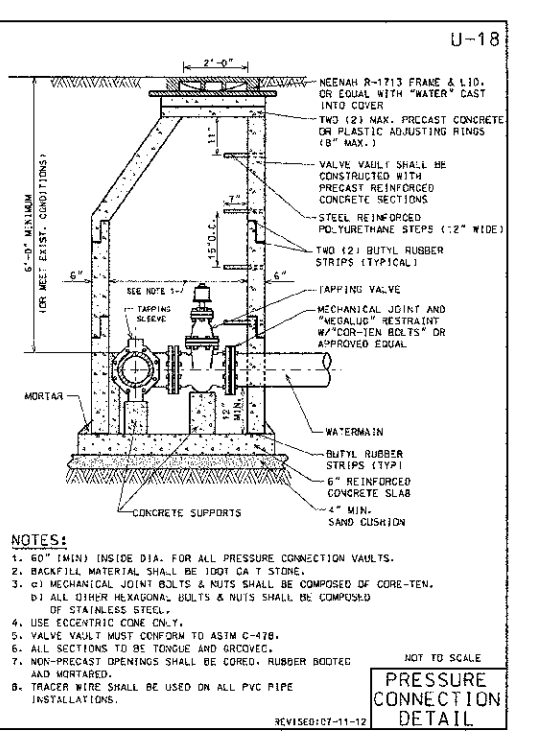
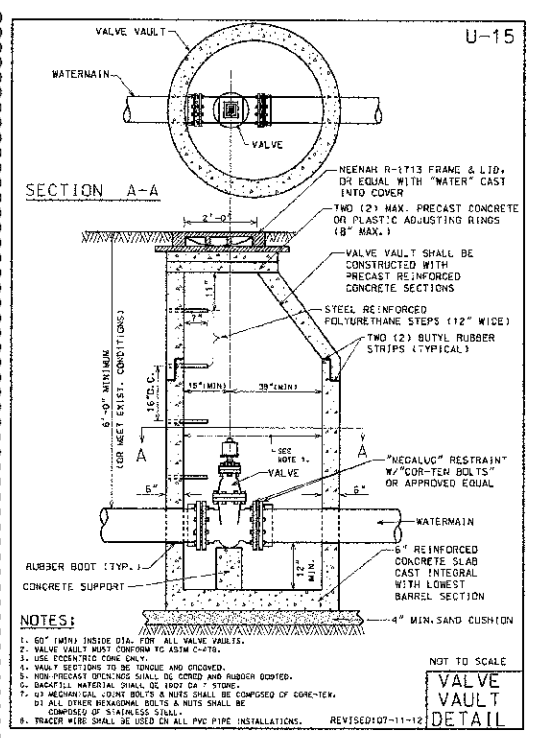
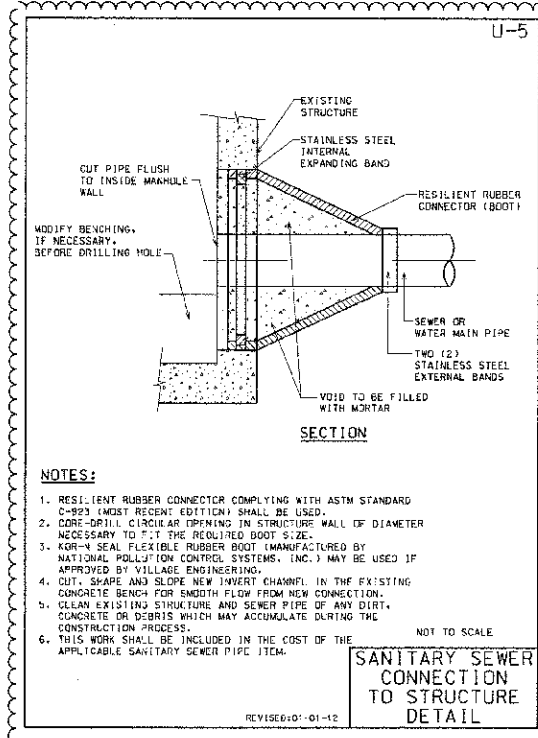
STORM STRUCTURES						
NO.	STATION	OFFSET	TYPE	FRAME	RIM/EP	INVERTS
EX MH-5	16+56	15.9' RT	EX MANHOLE	EXISTING	-	632.87 12" N (EX); 632.87 12" W (EX); 634.87 12" E
CB-29	18+43	12.5' RT	CATCH BASIN, TYPE A, 4' DIA	TY 11 F&G	640.66 EP	636.55 12" N; 637.30 12" S; 636.35 12" W
CB-30	17+50	12.5' RT	CATCH BASIN, TYPE C	TY 11 F&G	639.70 EP	635.90 12" E; 635.80 12" W
IN-31	18+43	12.5' LT	INLET, TYPE A	TY 11 F&G	640.32 EP	637.30 12" S
IN-32	18+47	29.5' RT	INLET, TYPE A	TY 11 F&G	640.53 EP	638.15 12" N

STORM PIPES					
NO.	TYPE	LENGTH (LF)	DIA (IN)	SLOPE	TBF (CY)
P-29	SS, CL B, TYPE 1	94	12	1.00%	26.2
P-30	SS, CL B, TYPE 1	91	12	0.50%	24.4
P-31	SS, CL B, TYPE 1	25	12	3.00%	5.4
P-32	SS, CL B, TYPE 1	17	12	5.00%	4.7



JEFFERSON AVENUE





DESIGNED - DSII
 DRAWN - MAC
 CHECKED - TLH
 DATE - 8/23/12
 REVISED - 12-19-12 ADDENDUM 1
 REVISED
 FILE - 110025-12_MISC_DETS.sft



STATE OF ILLINOIS
DEPARTMENT OF TRANSPORTATION

MISCELLANEOUS DETAILS
 SCALE: NONE | STA. TO STA.

F.A.P./F.A.U. RTE.	SECTION	COUNTY	TOTAL SHEETS	SHEET NO.
0348/1352	05-00160-00-CH	COOK	109	79
C-91-070-05		CONTRACT NO. 63756		
FED. ROAD DIST. NO. 1 ILLINOIS		FED. AID PROJECT F-0348(36)		