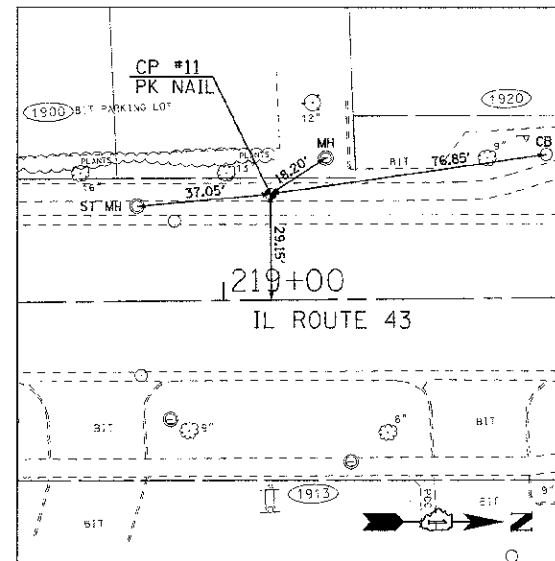
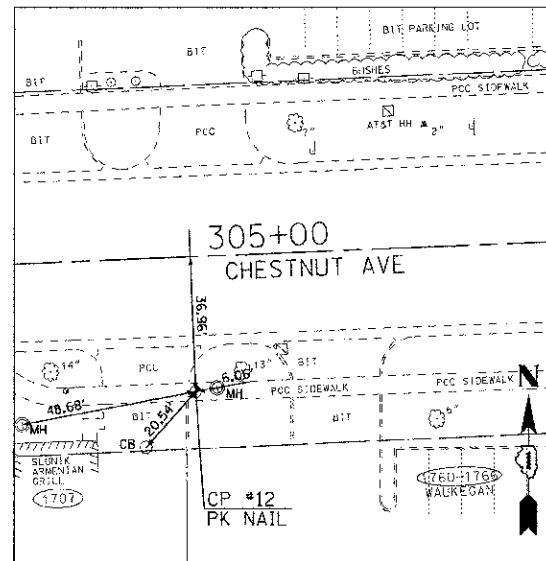


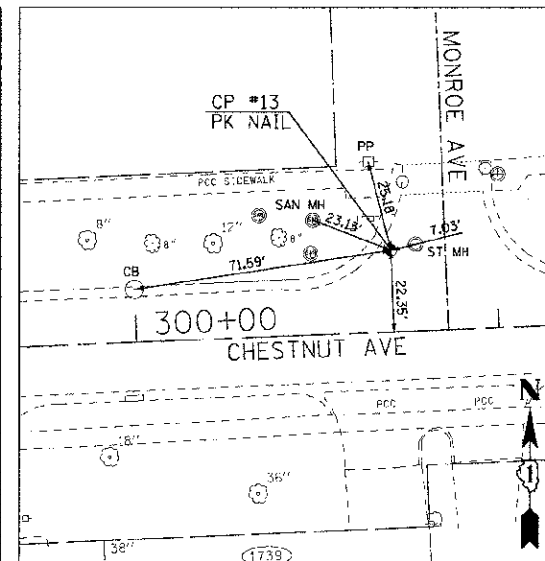
SUPPLEMENT 0 2012 BY BAXTER & WOODMAN, INC. 10/14/12 10:45 AM C:\projects\110025-12-ALIGN&TIES\110025-12-ALIGN&TIES.dwg  
 LICENSE NO. 187-000137 EXPIRES 12/31/2012  
 C:\projects\110025-12-ALIGN&TIES\110025-12-ALIGN&TIES.dwg 2/15/2012 2:05:29 PM  
 ID: 2/1/2012



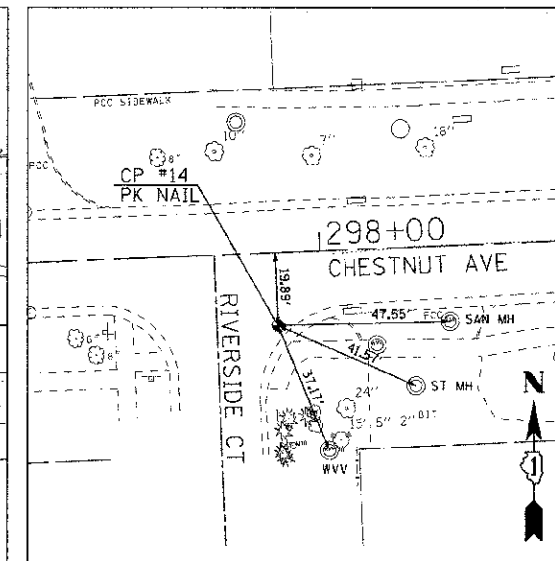
CP #11 STA 219+13.0, 29.15' LT  
 EL 642.55  
 N=10396.392393 E=9935.490371



CP #12 STA 305+01.7, 36.96' RT  
 EL 640.05  
 N=9594.755490 E=9732.095364



CP #13 STA 300+70.3, 22.35' LT  
 EL 634.23  
 N=9656.191606 E=9303.417155



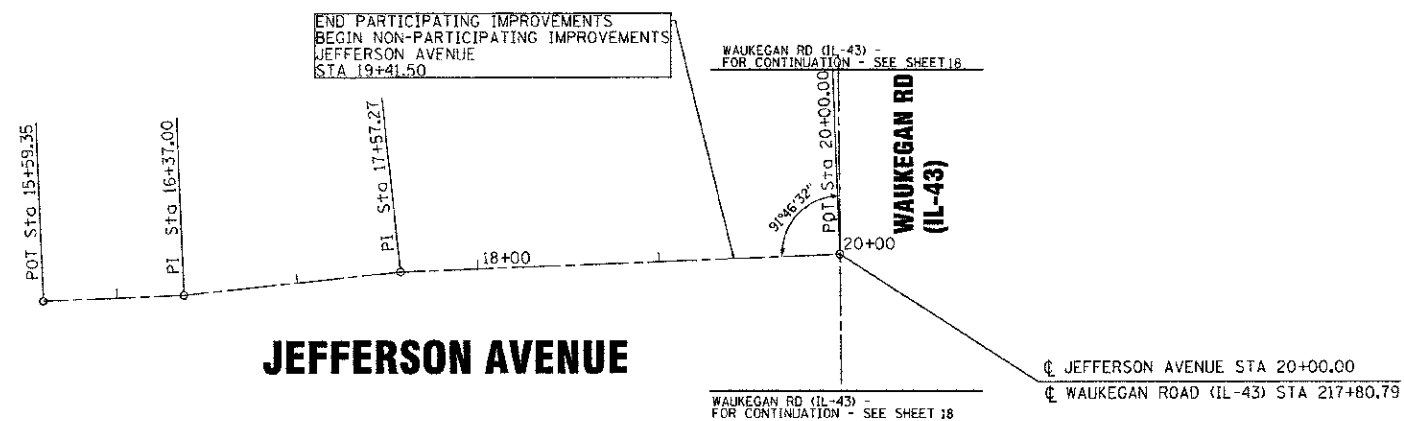
CP #14 STA 297+88.6, 19.89' LT  
 EL 630.50  
 N=9615.347796 E=9019.789110

PROPOSED JEFFERSON AVE (PRJEFF2) contains:  
 JFF1 JFF2 JFF3 JFF4

Beginning chain PRJEFF2 description

Point JFF1	N	10,256.72 E	9,519.86 Sta	15+59.35
Course from JFF1 to JFF2 S 89°51' 00.01" E Dist 77.65				
Point JFF2	N	10,256.52 E	9,597.52 Sta	16+37.00
Course from JFF2 to JFF3 N 86°24' 27.62" E Dist 120.27				
Point JFF3	N	10,264.05 E	9,717.55 Sta	17+57.27
Course from JFF3 to JFF4 S 89°45' 08.34" E Dist 242.73				
Point JFF4	N	10,263.00 E	9,960.28 Sta	20+00.00

Ending chain PRJEFF2 description



**CONTROL POINTS**

CP 1	N=8707.298515	E=9939.710379	640.05
CP 2	N=8867.189634	E=9946.260393	640.75
CP 3	N=9042.038584	E=9866.553833	639.05
CP 4	N=9082.351365	E=9862.535425	639.38
CP 5	N=9531.280163	E=9970.942342	642.27
CP 6	N=9661.857458	E=10010.455312	642.18
CP 7	N=9706.656498	E=9876.926638	641.81
CP 8	N=9832.886418	E=9887.195822	642.21
CP 9	N=10043.359488	E=10011.547766	641.79
CP 10	N=10245.972803	E=9910.189808	641.52
CP 11	N=10396.392393	E=9935.490371	642.55
CP 12	N=9594.755490	E=9732.095364	640.05
CP 13	N=9656.191606	E=9303.417155	634.23
CP 14	N=9615.347796	E=9019.789110	630.50



DESIGNED - DSH	REVISED -
DRAWN - MAC	REVISED -
CHECKED - TLH	REVISED -
DATE - 8/23/12	FILE - 110025-12-ALIGN&TIES.dwg

**ALIGNMENT AND TIES**

SCALE: NONE

STA. TO STA.

F.A.P./F.A.U. R.E.	SECTION	COUNTY	TOTAL SHEETS	SHEET NO.
0348/1352	05-00160-00-CH	COOK	109	20
C-91-070-C6			CONTRACT NO. 63756	
FED. ROAD DIST. NO. 1 ILLINOIS			FED. AID PROJECT F-0348(35)	