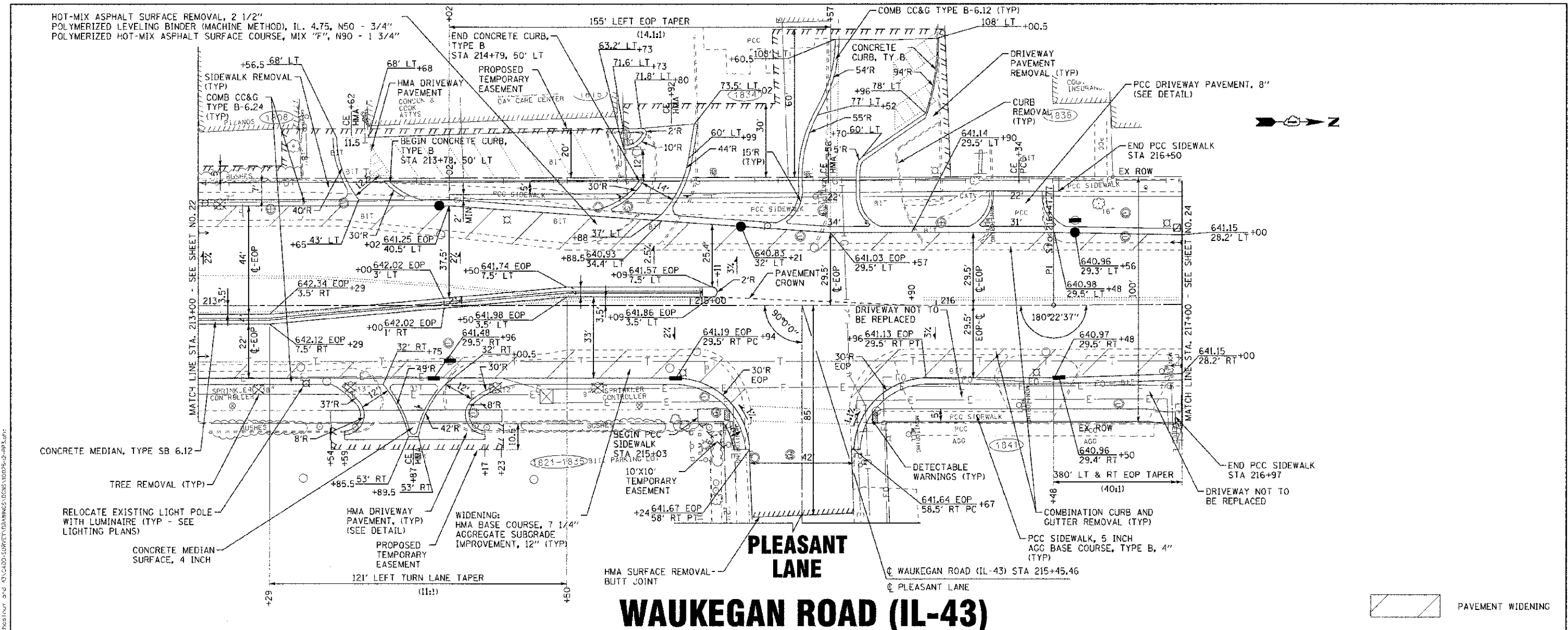
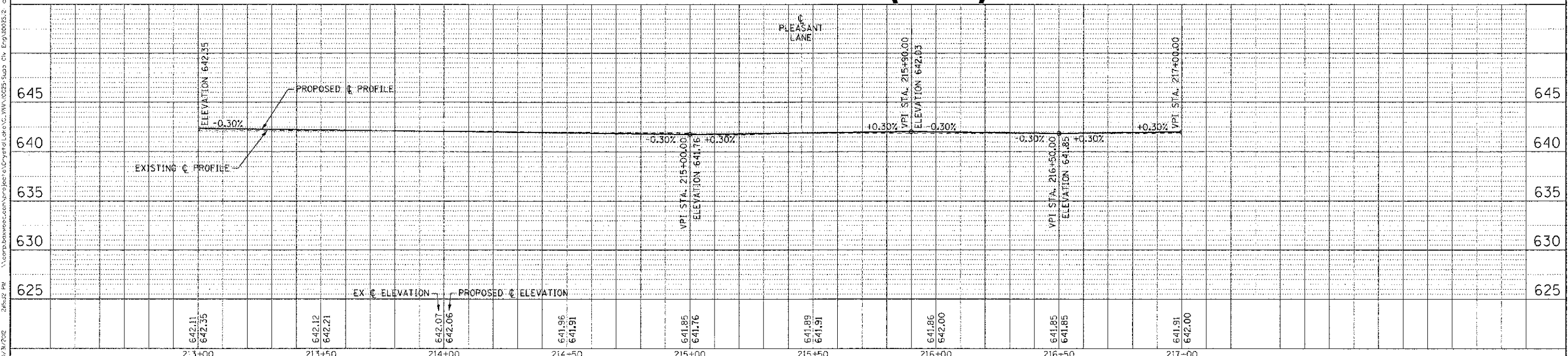


HOT-MIX ASPHALT SURFACE REMOVAL, 2 1/2"  
 POLYMERIZED LEVELING BINDER (MACHINE METHOD), IL. 4.75, N50 - 3/4"  
 POLYMERIZED HOT-MIX ASPHALT SURFACE COURSE, MIX "F", N90 - 1 3/4"



# WAUKEGAN ROAD (IL-43)



DESIGNED - DSH	REVISED - 10-12-12 PER IDOT	<b>STATE OF ILLINOIS</b> <b>DEPARTMENT OF TRANSPORTATION</b>	<b>GEOMETRIC PLAN AND PROFILE</b> <b>WAUKEGAN ROAD (IL-43)</b>		DATE - 8/23/12	FILE - 110025-12-PP3.sht	SECTION - 05 00160 00 011	COUNTY - COOK	TOTAL SHEETS - 109	SHEET NO. - 23		
DRAWN - MAC	REVISED -				SCALE: H: 1"=20' V: 1"=5'	STA. 215+00	TO STA. 217+00	CONTRACT NO. - 63756	FED. ROAD DIST. NO. 1	ILLINOIS	FGO. AID PROJECT F-03491351	
CHECKED - TLH	REVISED -											
DATE - 8/23/12	FILE - 110025-12-PP3.sht											

COPYRIGHT © 2012 BY BAXTER & WOODMAN, INC.  
 ALL RIGHTS RESERVED. DESIGN FROM  
 02/21/2012  
 C:\projects\110025-12\110025-12-PP3.sht

