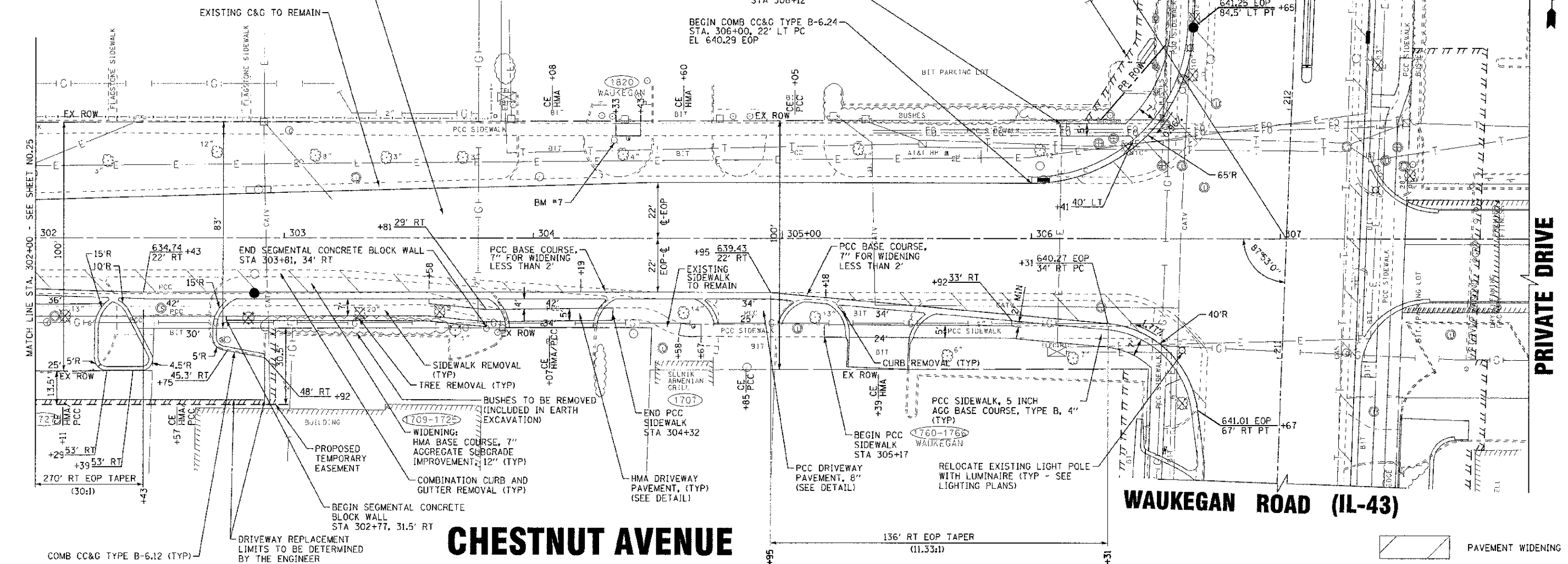
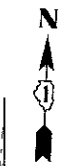


HOT-MIX ASPHALT SURFACE REMOVAL, 2 1/4"
 POLYMERIZED LEVELING BINDER (MACHINE METHOD), IL. 4.75, N50 - 3/4"
 HOT-MIX ASPHALT SURFACE COURSE, MIX "D", N70 - 1 1/2"

NOTE:
 LIMITS OF SIDEWALK REMOVAL AND
 PCC SIDEWALK, 5" AS DETERMINED
 BY THE ENGINEER

☉ WAUKEGAN ROAD (IL-43) STA 211+46.83
 ☉ CHESTNUT AVENUE STA 307+02.50

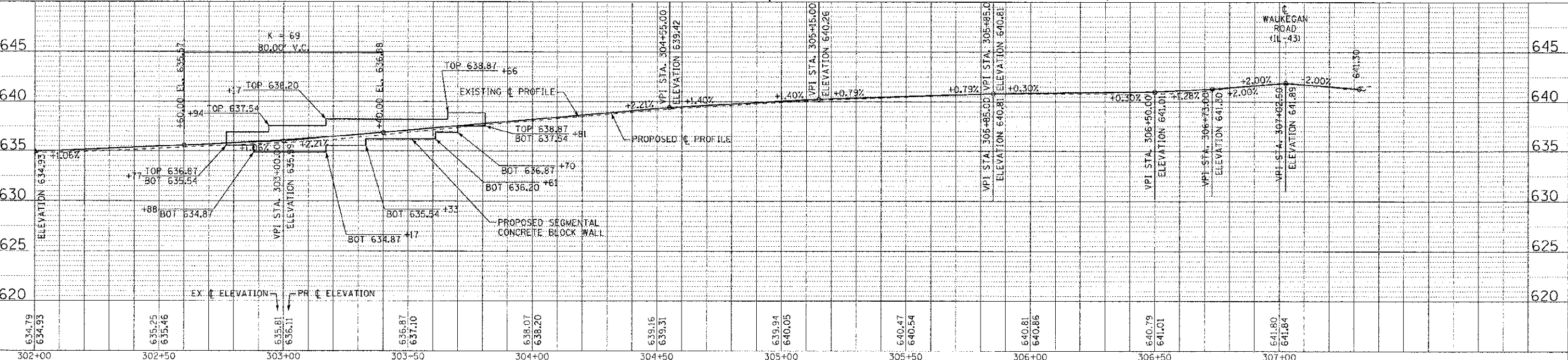
WAUKEGAN ROAD (IL-43)



CHESTNUT AVENUE

WAUKEGAN ROAD (IL-43)

PRIVATE DRIVE



DESIGNED - JSH	REVISED - 10-12-12 PER IDOT	STATE OF ILLINOIS DEPARTMENT OF TRANSPORTATION	GEOMETRIC PLAN AND PROFILE CHESTNUT AVENUE		F.A.P./F.A.U. RTE.	SECTION	COUNTY	TOTAL SHEETS	SHEET NO.
DRAWN - MAC	REVISED - 10-29-12 PER VILLAGE				0348/1352	C5-00160-00-CH	COOK	109	26
CHECKED - T.H.	REVISED - 11-16-12 PER VILLAGE				C-91-0/0-06		CONTRACT NO. 63756		
DATE - 8/23/12	FILE - 110025-12-PP6.sh1				FED. ROAD DIST. NO. 1 (ILLINOIS)		FED. AID PROJECT F-0348(35)		

2012 BY BAYTER & WOODMAN, INC.
 1100 EAST WASHINGTON, SUITE 110
 CHICAGO, ILLINOIS 60601
 773.227.2000
 8/23/2012 10:42 AM

