

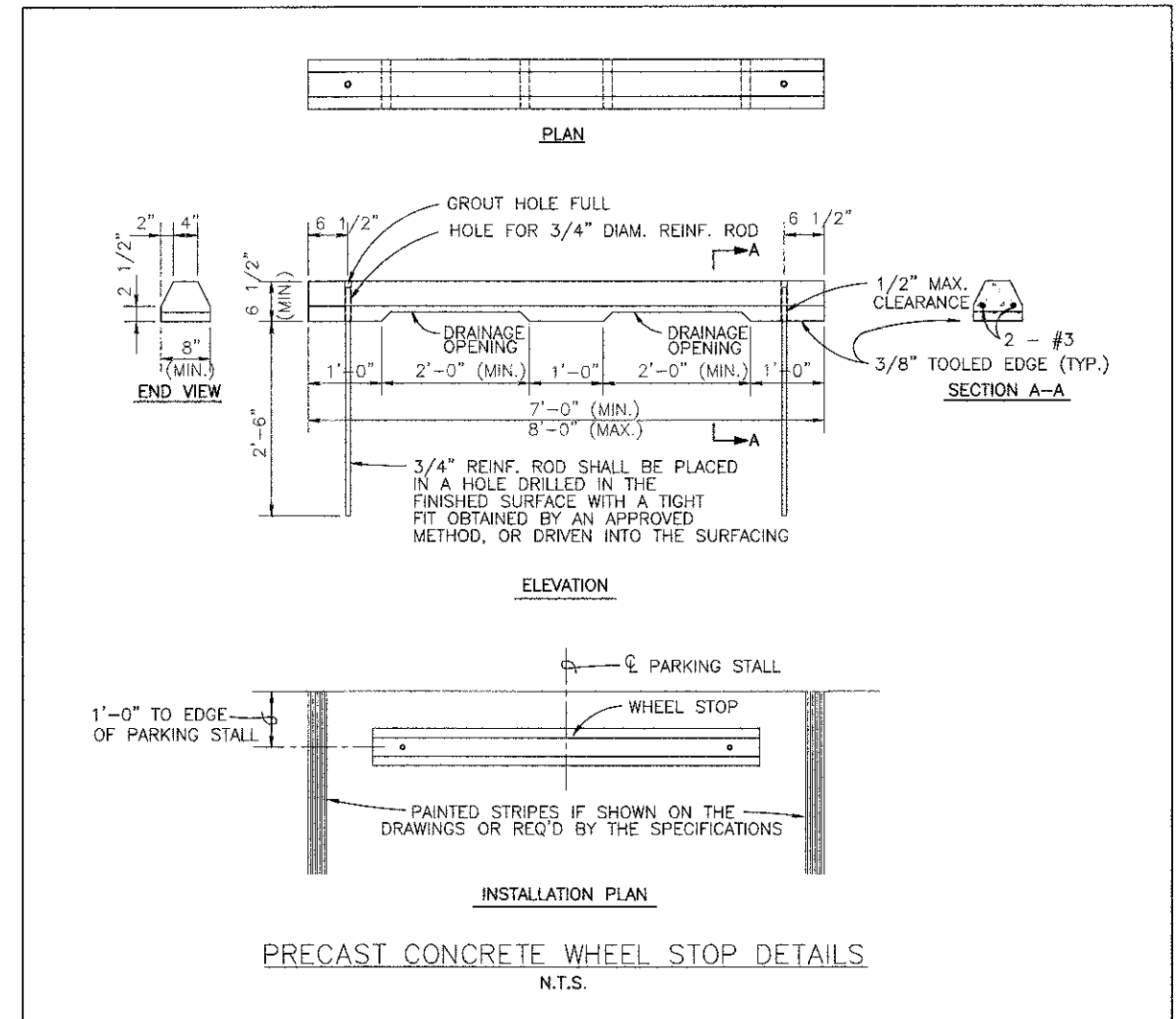
RECESSED REFLECTIVE PAVEMENT MARKERS
N.T.S.

INSTALLATION NOTES:

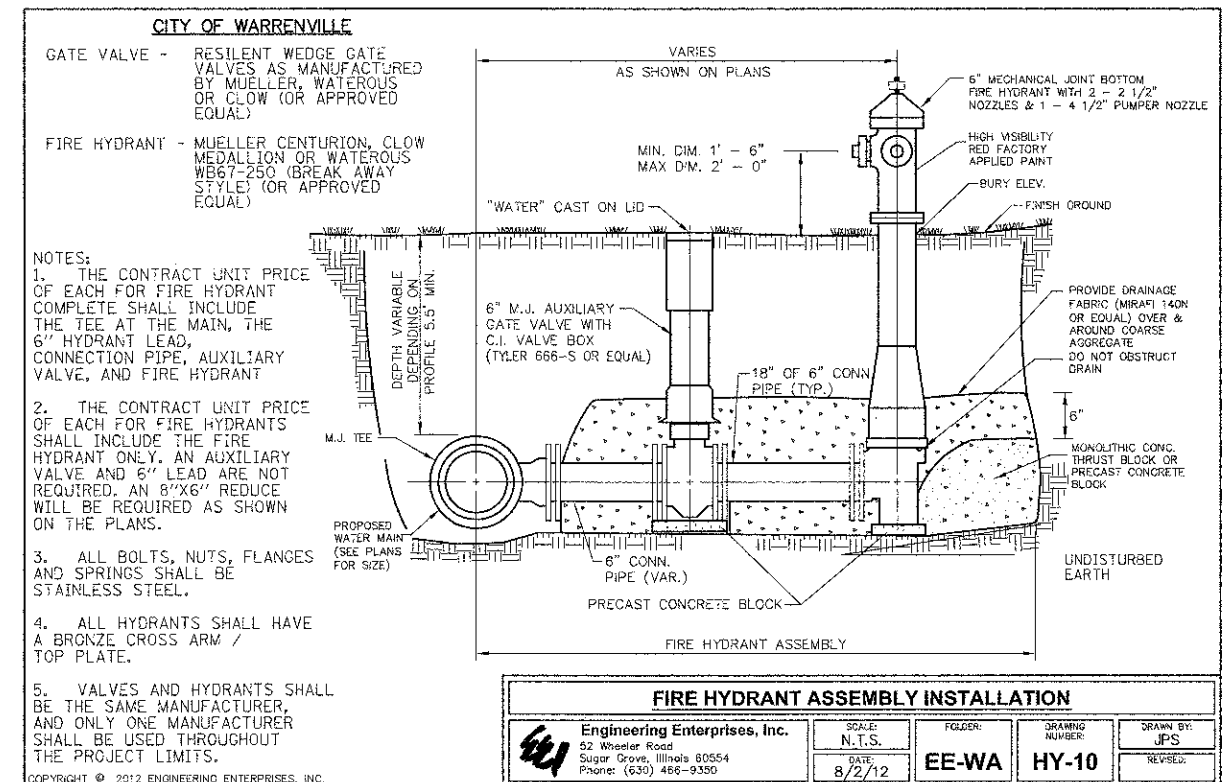
1. SAW CUT TO DIMENSIONS SHOWN.
2. SAW CUT AREAS TO BE DRY AND FREE OF MATERIAL THAT ADVERSELY AFFECTS THE ADHESIVE BOND.
3. INSTALL THE REFLECTOR WITH AN APPROVED TWO-COMPONENT EPOXY ADHESIVE. EPOXY SHALL NOT OBSCURE OR BLOCK THE LENS.
4. INSTALL TOP OF REFLECTOR 1/2 TO 1/4 INCH BELOW THE PAVEMENT SURFACE.
5. REFLECTOR SHALL BE 3M SERIES 180 OR APPROVED EQUAL.

GENERAL NOTE:

1. MARKER PLACEMENT AND COLOR SHALL CONFORM TO IDOT DISTRICT 1 HIGHWAY STANDARD TC-11.



PRECAST CONCRETE WHEEL STOP DETAILS
N.T.S.



FIRE HYDRANT ASSEMBLY INSTALLATION

Engineering Enterprises, Inc. 52 Wheeler Road Sugar Grove, Illinois 60554 Phone: (630) 466-9350	SCALE: N.T.S.	FOLDER: EE-WA	DRAWING NUMBER: HY-10	DRAWN BY: JPS
	DATE: 8/2/12	REVISED:		

Plotted: October 11, 2012 @ 11:13 AM By: Jim Schmidt - Tab: 21 Details 22x34

COPYRIGHT © 2012 ENGINEERING ENTERPRISES, INC.

Engineering Enterprises, Inc.
CONSULTING ENGINEERS
52 Wheeler Road
Sugar Grove, Illinois 60554
630.466.9700 / www.eeiweb.com

USER NAME =	DESIGNED - SWM/TWV	REVISED -
PLOT SCALE =	DRAWN - KKP/CLN/JPS	REVISED -
PLOT DATE =	CHECKED - JRL	REVISED -
	DATE - 8/24/12	REVISED -

**STATE OF ILLINOIS
DEPARTMENT OF TRANSPORTATION**

SPECIAL DETAILS

SCALE: N/A SHEET NO. 1 OF 2 SHEETS STA. N/A TO STA. N/A

F.A.U. RTE. 3553	SECTION 10-00031-00-RS	COUNTY DUPAGE	TOTAL SHEETS 29	SHEET NO. 21
FED. ROAD DIST. NO. 1 [ILLINOIS] FED. AID PROJECT - M-9003(866)			CONTRACT NO. 63758	

FILE: \\S:\PROJ\11\10031\DWG\10-00031-00-RS-21.DWG