

LEGEND

[] UNDERGROUND CONDUIT, GALVANIZED STEEL, 2 1/2" DIA. (81028210)

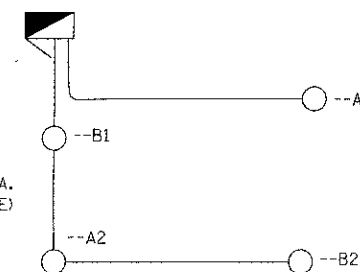
----- UNIT DUCT, 600V, 3-1C NO. 10, 1/C NO. 10 GROUND, (XLP-TYPE USE), 3/4" DIA. POLYETHYLENE (81603020)

NOTES:

- LUMINAIRE NUMBERING DECALS SHALL BE PLACED ON COMBINATION POLES PER DETAIL ON SHEET NO. 29 AND SECTION 830 OF THE STANDARD SPECIFICATIONS. THIS WORK SHALL BE INCLUDED IN THE COST OF LUMINAIRE, HIGH PRESSURE SODIUM, SPECIAL.

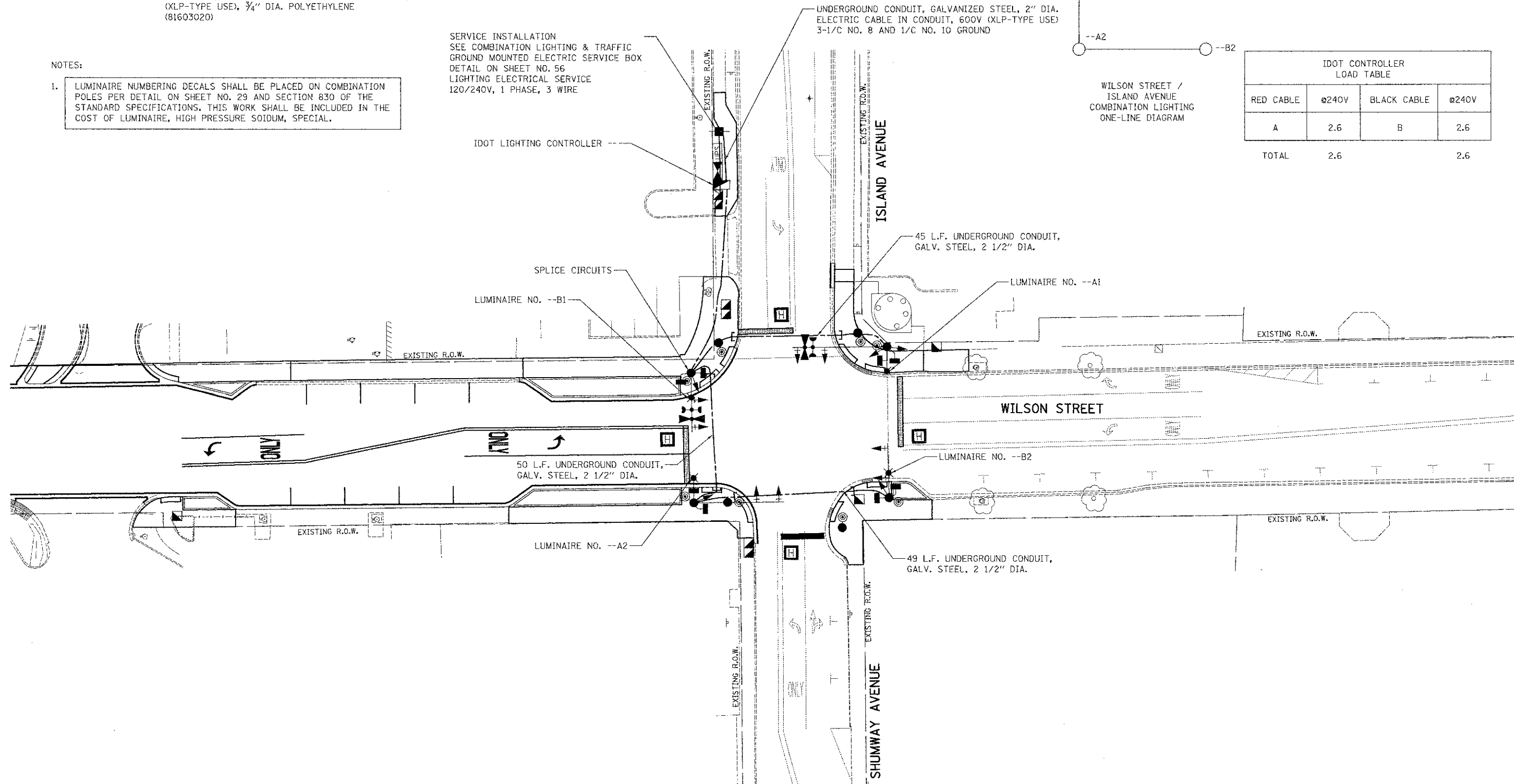
SERVICE INSTALLATION
SEE COMBINATION LIGHTING & TRAFFIC
GROUND MOUNTED ELECTRIC SERVICE BOX
DETAIL ON SHEET NO. 56
LIGHTING ELECTRICAL SERVICE
120/240V, 1 PHASE, 3 WIRE

UNDERGROUND CONDUIT, GALVANIZED STEEL, 2" DIA.
ELECTRIC CABLE IN CONDUIT, 600V (XLP-TYPE USE)
3-1/C NO. 8 AND 1/C NO. 10 GROUND



WILSON STREET /
ISLAND AVENUE
COMBINATION LIGHTING
ONE-LINE DIAGRAM

IDOT CONTROLLER LOAD TABLE			
RED CABLE	@240V	BLACK CABLE	@240V
A	2.6	B	2.6
TOTAL		2.6	



USER NAME = brd	DESIGNED - BRD	REVISED -
	DRAWN - QJT	REVISED -
PLOT SCALE = 20,000 / 1" =	CHECKED - JJE	REVISED -
PLOT DATE = 11/28/2012	DATE - 10/22/2012	REVISED -

**STATE OF ILLINOIS
DEPARTMENT OF TRANSPORTATION**

**COMBINATION LIGHTING PLAN
WILSON STREET AT ISLAND AVENUE / SHUMWAY AVENUE**

SCALE: 1"=20' SHEET NO. 1 OF 1 SHEETS STA. TO STA.

F.A.U. RTE.	SECTION	COUNTY	TOTAL SHEETS	SHEET NO.
1441	12-00073-01-TL	KANE	88	58
CONTRACT NO. 63763				
FED. ROAD DIST. NO. 1 ILLINOIS FED. AID PROJECT				