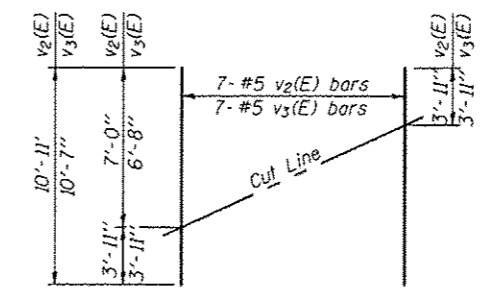
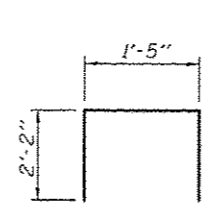
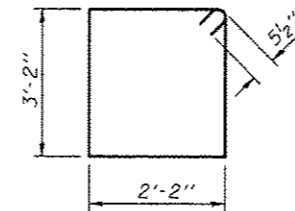
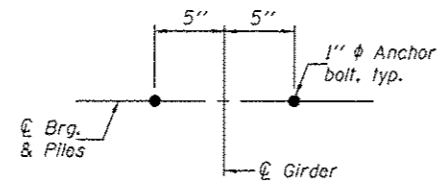


**BILL OF MATERIAL**

Bar	No.	Size	Length	Shape
h <sub>1</sub> (E)	24	#5	9'-2"	—
h <sub>1</sub> (E)	24	#5	9'-11"	—
h <sub>2</sub> (E)	3	#4	19'-5"	—
h <sub>3</sub> (E)	3	#4	14'-7"	—
p(E)	11	#7	40'-1"	—
p <sub>1</sub> (E)	11	#7	35'-3"	—
s <sub>2</sub> (E)	68	#4	11'-7"	□
s <sub>3</sub> (E)	35	#4	5'-9"	□
u(E)	10	#6	7'-5"	□
v <sub>1</sub> (E)	148	#5	4'-4"	—
v <sub>2</sub> (E)	7	#5	10'-11"	—
v <sub>3</sub> (E)	7	#5	10'-7"	—
Structure Excavation	Cu. Yd.		59.0	
Concrete Structures	Cu. Yd.		29.5	
Reinforcement Bars, Epoxy Coated	Pound		3840	
Furnishing Steel Piles HPI0x42	Foot		230	
Driving Piles	Foot		230	
Test Pile Steel HPI0x42	Each		1	
Concrete Encasement	Cu. Yd.		3.8	
Anchor Bolts 1"	Each		22	

**PILE DATA**

Type: Steel HPI0x42  
 Nominal Required Bearing: 335 Kips  
 Factored Resistance Available: 184 Kips  
 Est. Length: 23'  
 No. Production Piles: 10  
 No. Test Piles: 1



REVISIONS

1. REVISED SHEET 1-11-13