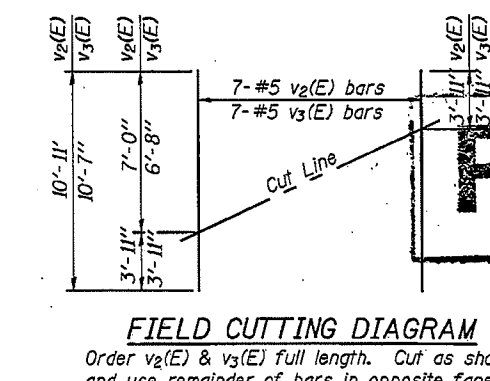
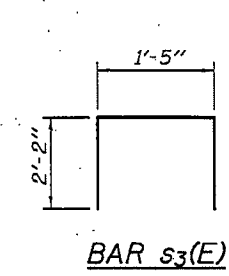
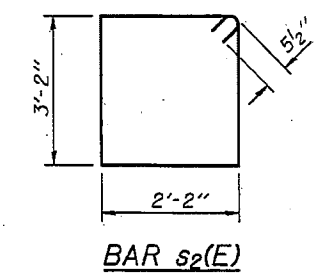
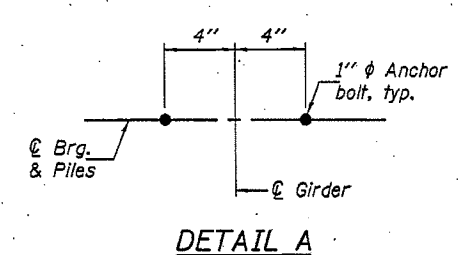


BILL OF MATERIAL

Bar No.	Size	Length	Shape
h(E)	24 #5	9'-2"	—
h1(E)	24 #5	9'-11"	—
h2(E)	3 #4	19'-5"	—
h3(E)	3 #4	14'-7"	—
p(E)	11 #7	40'-1"	—
p1(E)	11 #7	35'-3"	—
s2(E)	68 #4	11'-7"	□
s3(E)	35 #4	5'-9"	□
u(E)	10 #6	7'-5"	□
v1(E)	148 #5	4'-4"	—
v2(E)	7 #5	10'-11"	—
v3(E)	7 #5	10'-7"	—
Structure Excavation	Cu. Yd.	59.0	
Concrete Structures	Cu. Yd.	29.4	
Reinforcement Bars, Epoxy Coated	Pound	3840	
Furnishing Steel Piles HP10x42	Foot	253	
Driving Piles	Foot	253	
Concrete Encasement	Cu. Yd.	3.8	
Anchor Bolts 1"	Each	22	

PILE DATA
 Type: Steel HP10x42
 Nominal Required Bearing: 335 Kips
 Factored Resistance Available: 184 Kips
 Est. Length: 23'
 No. Production Piles: 11
 No. Test Piles: 0



PRE-FINAL